

Bethlehem PUMPING UNITS

ENGINEERING DATA

160 API SIZE

160,000 In. Lbs. API Peak Torque Pumping Units

GEAR REDUCER DATA

OPTIONAL ITEMS

<p>API Reducer Size 160 API Peak Torque @ 20 SPM 160,000 in. lbs. Gear Ratio, Double Reduction 28.67 to 1 Crankshaft Dia. 5 5/8" V-Belt Sheave - Pitch Dia. Std. 29.6" 4C or 3D Alternates 19.6" or 24.6", Max. 38" Diameter of Reducer Hi-Speed Shaft 2 3/8" Distance, Centerline Unit to Centerline Drive 13 7/8" Gear Reducer Oil Capacity, U. S. Gal. 22</p>	<p>Dual Zone Polished Rod Hanger Triple Zone Polished Rod Hanger Wide Main Base (Portable Type) Crank Guard Rails Power Assemblies for: Single Cylinder Engines, Hi-Speed Engines, Electric Motors— Elevated or Ground Level.</p>
--	---

API Structure Size	200-74	173-74	200-64	169-64	143-64	169-54
Unit Designation	160-200-74	160-173-74	160-200-64	160-169-64	160-143-64	160-169-54
API Structure Capacity, lbs.	20,000	17,300	20,000	16,900	14,300	16,900
Length of Strokes, in.	74, 64, 54, 44	74, 62, 51, 39	64, 54, 44, 34	64, 54, 44, 34	64, 52, 40, 28	54, 44, 34, 24
Walking Beam Size	24" @ 94#	24" @ 84#	24" @ 84#	24" @ 84#	18" @ 70#	18" @ 70#
Saddle Bearing Type	BUSHING TYPE — FACTORY LUBRICATED					
Projected Area, sq. in.	97.5	75	75	75	63	63
Tail Bearing Type	BRONZE BUSHED — FACTORY LUBRICATED					
Projected Area, sq. in.	37	37	37	37	37	37
Wrist Pin Bearing - Type	SPHERICAL ROLLER BEARING — FACTORY LUBRICATED — TAPERED PIN, REMOVED HYDRAULICALLY					
Size	3SL	3SL	3SL	4SL	4SL	4SL
Pitman Size, Pipe O. D.	4" Std.	4" Std.	4" Std.	3 1/2" Std.	3 1/2" Std.	3 1/2" Std.
Wireline Hanger	1" x 22'-0"	1" x 20'-6"	1" x 19'-0"	1" x 19'-0"	1" x 18'-3"	1" x 16'-0"
Cranks	7478-B	6468-B	6468-B	6468-B	5456-B	5456-B
Structure Unbalance, lbs.	700	400	700	600	400	550

COUNTERBALANCE DATA

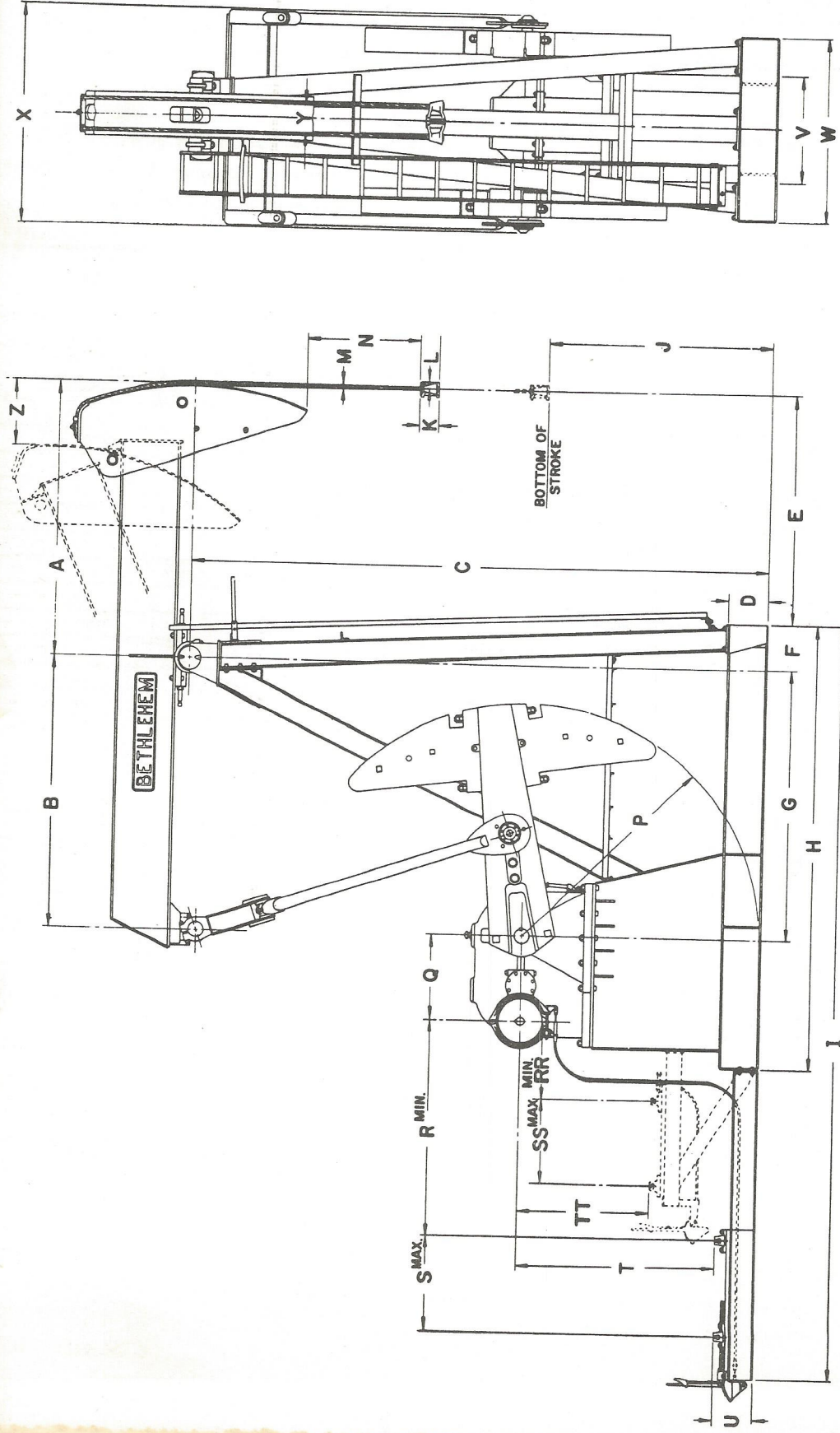
Pounds of effective Counterbalance at Polished Rod at Maximum Stroke, Includes Structure Unbalance.

Cranks Only	5,650	3,970	4,780	4,680	2,630	3,150
4 No. 78 Main Weights		8,110				
4 No. 78 Filler Weights		10,190				
8 No. 78 Filler Weights		12,270				
12 No. 78 Filler Weights		14,350				
One Only Filler Weight		520				
4 No. 68 Main Weights	10,620	8,190	9,600			
4 No. 68 Filler Weights	12,590	9,680	11,510			
8 No. 68 Filler Weights	14,560	11,530	13,420			
12 No. 68 Filler Weights	16,540	13,200	15,330			
One Only Filler Weight	490	420	480			
4 No. 50 Main Weights	9,330	7,090	8,350	8,250	5,450	6,430
4 No. 50 Filler Weights	11,220	8,690	10,180	10,080	6,890	8,110
8 No. 50 Filler Weights	13,100	10,290	12,000	11,900	8,320	9,780
12 No. 50 Filler Weights	14,990	11,890	13,830	13,730	9,760	11,460
One Only Filler Weight	470	400	460	460	360	420

Bethlehem PUMPING UNITS

DIMENSIONAL DATA

160,000 In. Lbs. Peak Torque Pumping Units



UNIT	A	B	C	D	E	F	G	H	I	J	K	L	M	N	P	Q	R	S	T	U	V	W	X	Y	Z	RR	SS	TT
160-200-74	8'-0"	8'-0"	16'-4 3/4"	16"	6'-7"	17"	8'-0"	12'-9 1/2"	21'-6 1/2"	82"	5 1/2"	2 1/2"	1'-1"	31 1/2"	78"	26"	65 1/4"	46 1/2"	65"	14"	32"	57 3/4"	71 1/4"	9"	25 1/2"	26 3/4"	34 3/4"	38 3/4"
160-173-74	8'-0"	7'-0"	14'-1"	12"	6'-8"	16"	7'-0"	11'-8 1/2"	20'-5 1/2"	64"	"	"	"	22 1/2"	68"	26"	"	"	55"	"	"	51 1/4"	"	"	"	26 1/2"	"	29"
160-200-64	7'-0"	7'-0"	14'-1"	12"	5'-8"	"	"	"	"	75"	"	"	"	21 1/4"	68"	26"	"	"	"	"	"	"	"	"	23 1/2"	"	"	"
160-169-64	7'-0"	7'-0"	14'-1"	12"	5'-8"	"	"	"	"	"	"	"	"	"	68"	26"	"	"	"	"	"	"	"	"	23 1/2"	"	"	"
160-143-64	7'-0"	6'-0"	12'-1 1/4"	12"	5'-10"	14"	6'-0"	10'-6 1/2"	17'-11"	56 1/4"	"	"	"	16 3/4"	56"	26"	48 3/4"	"	43"	"	"	51 1/4"	"	"	19 3/4"	17"	30 1/4"	30 1/4"
160-169-54	6'-0"	6'-0"	"	12"	4'-10"	14"	"	"	"	67 1/4"	"	"	"	15 3/4"	56"	26"	"	"	"	"	"	"	"	"	18 1/4"	"	"	"

Note: Dimensions I, R, S and T are for Hi-Speed Engine