

Bethlehem PUMPING UNITS

ENGINEERING DATA

40 API SIZE

40,000 In. Lbs. API Peak Torque Pumping Units

GEAR REDUCER DATA

OPTIONAL ITEMS

API Reducer Size	40	Dual Zone Polished Rod Hanger
API Peak Torque @ 20 SPM	40,000 in. lbs.	Triple Zone Polished Rod Hanger
Gear Ratio, Double Reduction	29.2 to 1	Wide Main Base (Portable Type)
Crankshaft Dia.	4"	Crank Guard Rails
V-Belt Sheave - Pitch Dia.	Std. 21.3" 2C or 3B Alternate 19.6", Max. 23.3"	Power Assemblies for: Single Cylinder Engines, Hi-Speed Engines, Electric Motors — Elevated or Ground Level.
Diameter of Reducer Hi-Speed Shaft	1 1/16"	
Distance, Centerline Unit to Centerline Drive	9 3/8"	
Gear Reducer Oil Capacity, U. S. Gal.	7	

STRUCTURE DATA

API Structure Size	89-42	76-42	89-36	67-36	56-36	67-30
Unit Designation	40-89-42	40-76-42	40-89-36	40-67-36	40-56-36	40-67-30
API Structure Capacity, lbs.	8,900	7,600	8,900	6,700	5,600	6,700
Length of Strokes, in.	42, 33, 23	42, 33, 23	36, 28, 20	36, 28, 20	36, 28, 20	30, 20
Walking Beam Size	16" @ 36#	14" @ 34#	14" @ 34#	12" @ 31#	12" @ 27#	12" @ 27#
Saddle Bearing Type	BUSHING TYPE, FACTORY LUBRICATED					
Projected Area, sq. in.	31	31	31	31	31	31
Tail Bearing Type	STRAIGHT ROLLER BEARING, FACTORY LUBRICATED					
Wrist Pin Bearing - Type	TAPERED ROLLER BEARING, FACTORY LUBRICATED, REMOVED HYDRAULICALLY					
Size	6S	6S	6S	6S	6S	6S
Pitman Size	3" I BEAM					
Wireline Hanger	3/4" x 12'-6"	3/4" x 12'-6"	3/4" x 11'-0"	5/8" x 11'-0"	5/8" x 11'-0"	5/8" x 11'-0"
Cranks	3644-B	3644-B	3644-B	3644-B	3644-B	2436-B
Structure Unbalance, lbs.	150	150	275	275	275	150

COUNTERBALANCE DATA

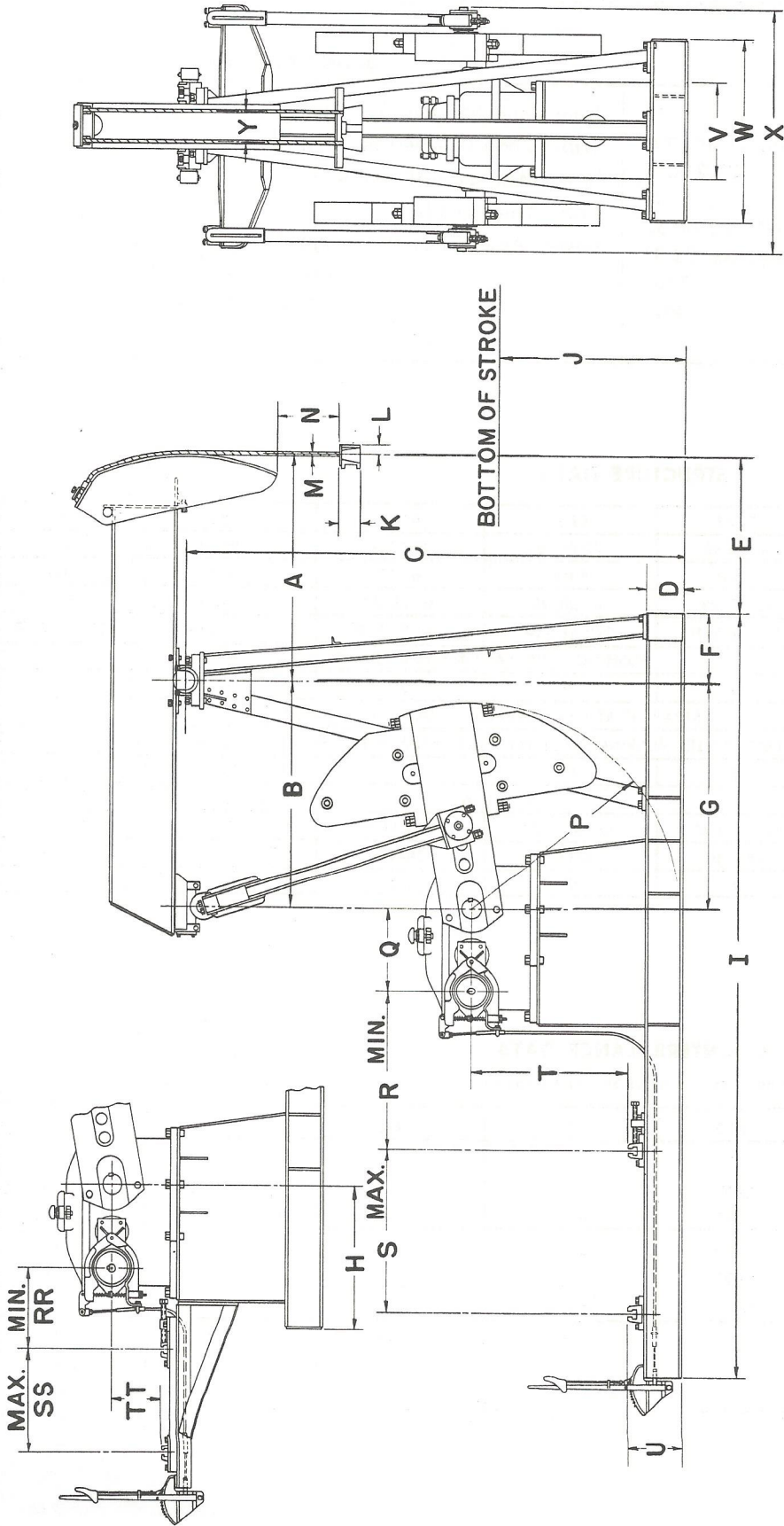
Pounds of effective Counterbalance at Polished Rod at Maximum Stroke, Includes Structure Unbalance.

Cranks Only	1,620	1,620	1,990	1,990	1,990	1,370
4 No. 45 Main Weights	5,120	5,120	6,070			
4 No. 45A Aux. Weights	6,050	6,050	7,155			
4 No. 45 Aux. Weights	6,920	6,920	8,170			
4 No. 40 Main Weights	4,540	4,540	5,400	5,400	5,400	4,400
4 No. 40A Aux. Weights	5,095	5,095	6,045	6,045		4,970
4 No. 40 Aux. Weights	5,650	5,650	6,690			5,540
4 No. 35 Main Weights				4,240	4,240	3,400
4 No. 35A Aux. Weights				4,750	4,750	3,860
4 No. 35 Aux. Weights				5,260	5,260	4,320

Bethlehem PUMPING UNITS

DIMENSIONAL DATA

40,000 In. Lbs. Peak Torque Pumping Units



Unit	A	B	C	D	E	F	G	H	I	J	K	L	M	N	P	Q	R	S	T	U	V	W	X	Y	RR	SS	TT
40-89-42	4'-8"	4'-0"	8'-10 1/2"	8"	41"	15"	4'-0"	30"	13'-6"	42"	4 1/2"	2 1/8"	3/4"	15 1/2"	44"	17 1/2"	28"	44 3/4"	33 3/4"	11 1/4"	20"	38 1/2"	51 1/4"	6 1/2"	17"	21 1/4"	10 3/4"
40-76-42	"	"	"	"	"	"	"	"	"	"	"	"	"	"	"	"	"	"	"	"	"	"	"	"	"	"	"
40-89-36	4'-0"	"	"	"	33"	"	"	"	"	50 1/2"	"	"	"	13"	"	"	"	"	"	"	"	"	"	"	"	"	"
40-67-36	"	"	"	"	"	"	"	"	"	"	"	"	5/8"	"	"	"	"	"	"	"	"	"	"	"	"	"	"
40-56-36	"	"	"	"	"	"	"	"	"	"	"	"	"	"	"	"	"	"	"	"	"	"	"	"	"	"	"
40-67-30	3'-9"	3'-0"	7'-6 1/2"	6"	31"	14"	3'-0"	"	12'-5"	37 1/2"	"	"	"	"	36"	"	"	46"	27 3/4"	9 1/4"	"	31"	"	"	"	"	"

Note: Dimensions I, R, S and T are for one piece electric motor base. Separate outrigger furnished when required for engines.