

# Bethlehem PUMPING UNITS

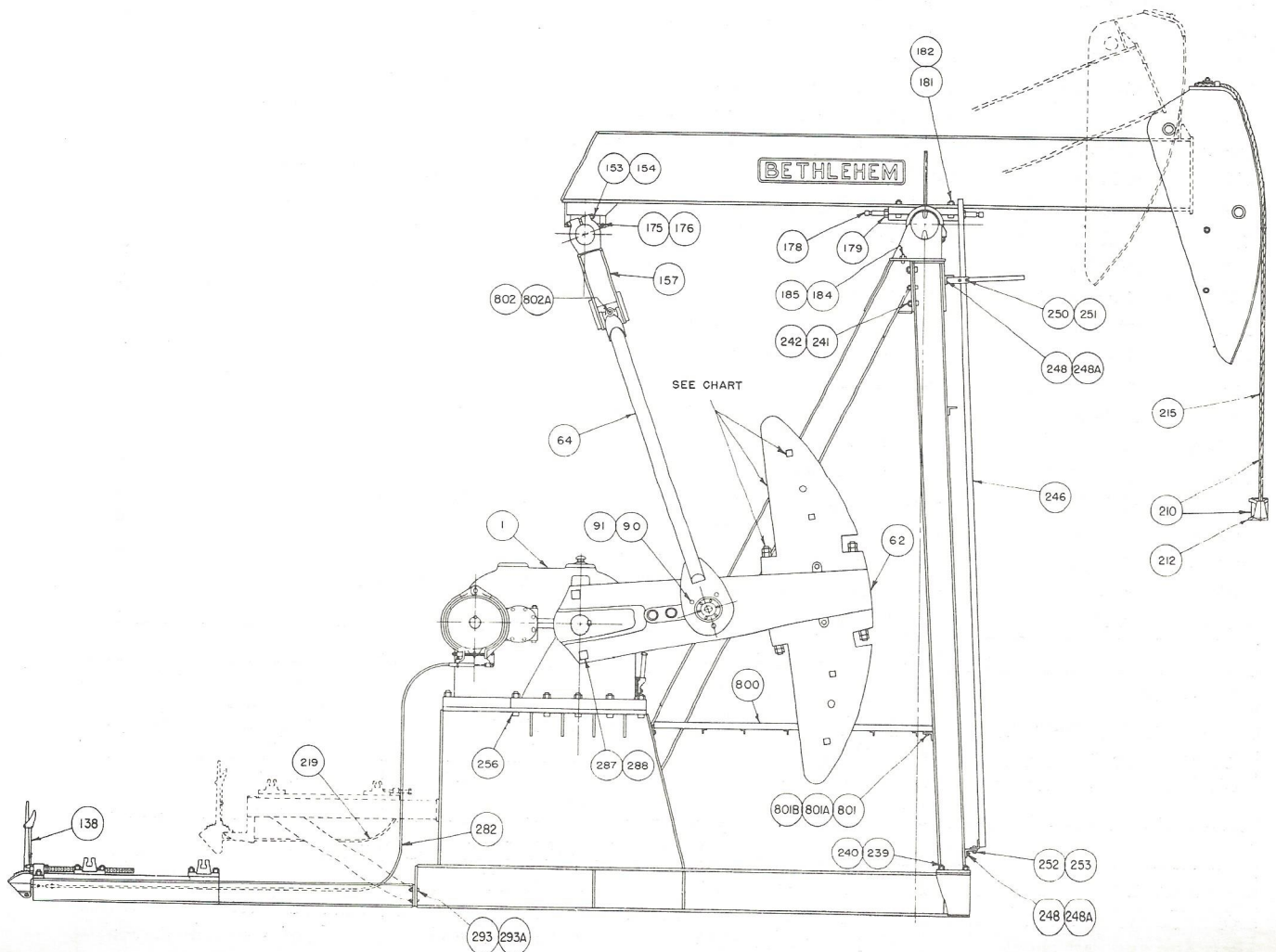
## PARTS LIST

160-169-64

### INSTRUCTIONS FOR ORDERING PARTS

The following information must be furnished with all orders for BETHLEHEM API Pumping Unit Parts:

1. Structural designation of Unit, e. g. 160-169-64
2. Serial Number of Unit (This number is stamped on gear box name plate.)



STRUCTURAL COMPONENTS

Item No.	Part No.	Description	No. Req'd.
1	DM-26888	Assembly, Reducer, 160DA	1
62	DM-30559	Crank, 6468-B	2
64	BM-35377	Pitman, 71-1/2" Centers	2
90	907416	Screw, Cap, 3/4" x 2" (Pitman to Wrist Pin)	6
91	904114	Washer, Lock, 3/4" (Pitman to Wrist Pin)	6
153	902664	Bolt, Mach. w/Hex Nut 1" x 6-1/2" (Cross Beam to Tail Bearing)	2
154	904118	Washer, Lock, 1" (Cross Beam to Tail Bearing)	2
157	CM 35991	Cross Beam	1
175	902672	Bolt, Mach. w/Hex Nut 1" x 8-1/2" (Tail Bearing to Beam)	2
176	904118	Washer, Lock, 1" (Tail Bearing to Beam)	2
178	908350	Jack Screw (Adjusting Bolt, Beam) 1"x6" Cup Point Set Screw	2
179	903116	Nut, Hex Jam 1"	2
181	902654	Bolt, Mach. w/Hex Nut 1" x 4" (Saddle to Beam)	4
182	904122	Washer, Lock, 1" (Saddle to Beam)	4
184	902834	Bolt, Mach. w/Hex Nut 1-1/4" x 4" (Saddle Bearing to Post)	4
185	904122	Washer, Lock, 1-1/4" (Saddle Bearing to Post)	4
210	BM-11196	Assembly, Wire Line	1
212	CM-10828	Carrier Bar	1
215		Wire Line, Size 1" x 19'-0"	1
219	BP-13466	Brake Cable 8'-6", Elevated Electric Motor	1
239	902830	Bolt, Mach. w/Hex Nut 1-1/4" x 3" (Post to Base)	8
240	904122	Washer, Lock, 1-1/4" (Post to Base)	8
241	902458	Bolt, Mach. w/Hex Nut 3/4" x 1-1/2" (Rear to Front Post Leg)	12
242	904114	Washer, Lock, 3/4" (Rear to Front Post Leg)	12
246	CM-29656	Ladder	1
248	902462	Bolt, Mach. w/Hex Nut 3/4" x 2" (Ladder Bracket to Post) Lower	1
248		Bolt, Mach. w/Hex Nut 3/4" x 1-1/2" (Ladder Bracket to Post) Upper	2
248-A	904114	Washer, Lock, 3/4" (Ladder Bracket to Post)	3
250	902280	Bolt, Mach. w/Hex Nut 1/2" x 1-3/4" (Clamps Upper Ladder Bracket)	4
251	904108	Washer, Lock, 1/2" (Clamps Upper Ladder Bracket)	4
252	902276	Bolt, Mach. w/Hex Nut 1/2" x 1-1/4" (Ladder to Lower Bracket)	2
253	904108	Washer, Lock, 1/2" (Ladder to Lower Bracket)	2
256	902836	Bolt, Mach. w/Hex Nut, 1-1/4" x 4-1/2" (Reducer to Sub Base)	9
282	BP-13933	Brake Cable 14'-0", High Speed Engine	1
287	902848	Bolt, Mach. w/Hex Nut 1-1/4" x 7-1/2" (Counterweight Stop)	4
288	904122	Washer, Lock, 1-1/4" (Counterweight Stop)	4
293	902464	Bolt, Mach. w/Hex Nut 3/4" x 2-1/4" (Base Joint)	4
293-A	904014	Washer, Cut, 3/4" (Base Joint)	8
800	CM34793	Platform, Working	1
801	902370	Bolt, Mach. w/Hex Nut 5/8" x 1-3/4" (Working Platform)	4
801-A	904112	Washer, Lock, 5/8" (Working Platform)	4
801-B	904012	Washer, Cut, 5/8" (Working Platform)	4
802	902658	Bolt, Mach. w/Hex Nut 1" x 5" (Upper Pitman Connection)	2
802-A	904118	Washer, Lock, 1" (Upper Pitman Connection)	2

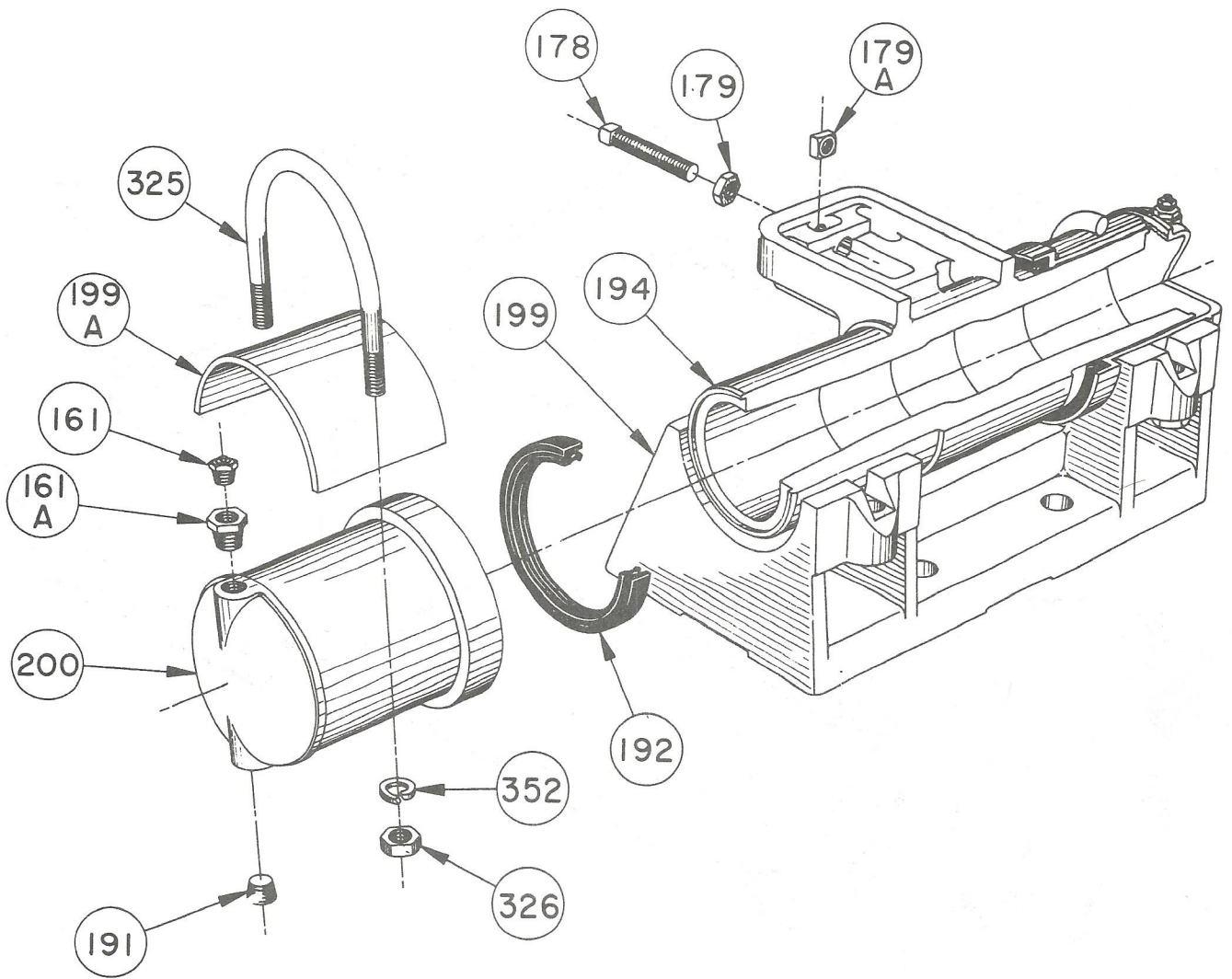
COUNTERWEIGHT BOLTS: QUANTITY, SIZE, PART NUMBER

Counter Weight	78R - DM 34706	50R - CM 34773	46R - CM 36222
Size and Part Number	78L - DM 34707	50L - CM 34774	46L - CM 36223
Quantity of Bolts	2 Bolts	2 Bolts	2 Bolts
Bolt Size and Part Number	1-1/4" x 11" A-5051	1-1/4" x 7-1/2" A-5103	1-1/4" x 7-1/2" A-5103

FILLER WEIGHT BOLTS: QUANTITY, SIZE, PART NUMBER

Filler Weight	78 CF-34708	50 CF-34775	46 DF-36224
Quantity of Bolts	2 Bolts	2 Bolts	2 Bolts
Bolt Size and Part Number	1" x 10" A-34839	1" x 10" A-34839	7/8" x 8-1/2" A-36326

# Bethlehem PUMPING UNITS

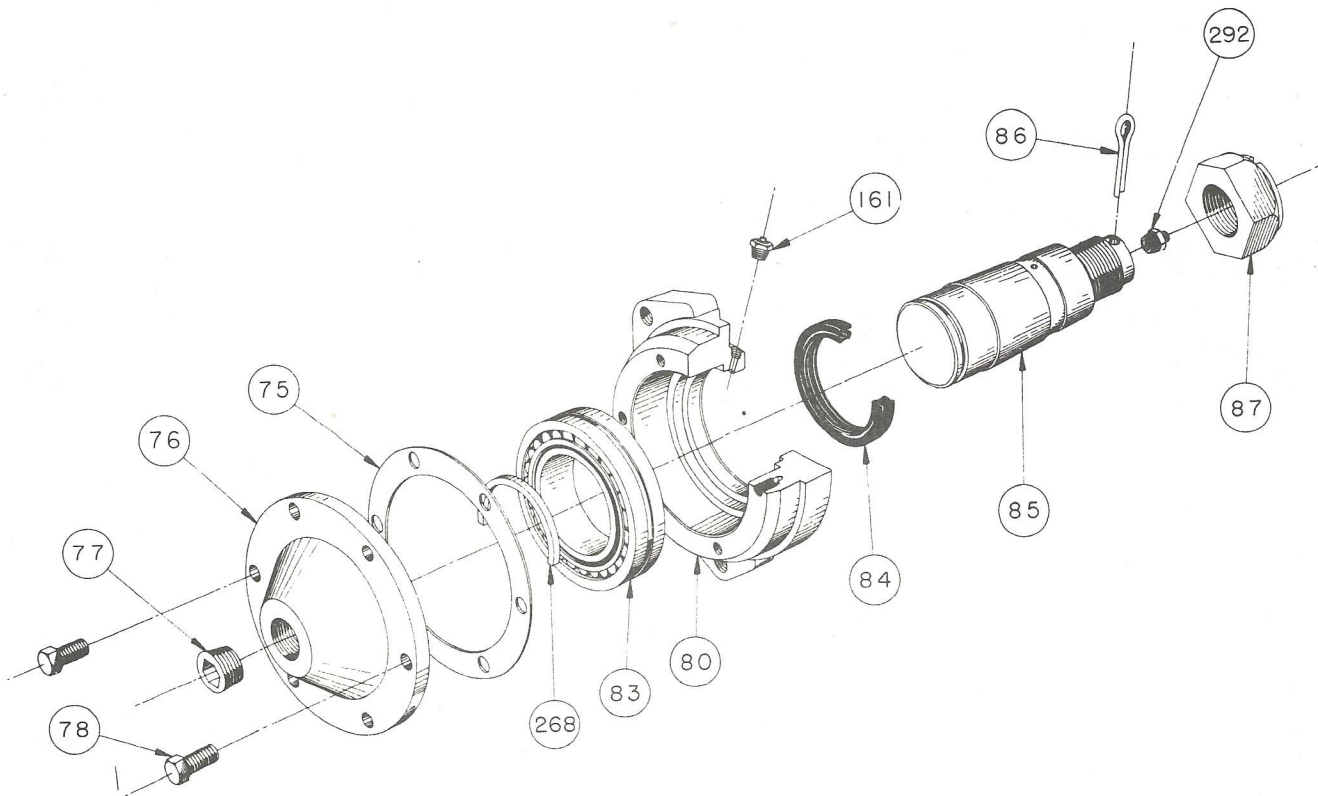


<u>Item No.</u>	<u>Part No.</u>	<u>Description</u>	<u>No. Req'd.</u>
		ASSEMBLY, SADDLE BEARING #C75	1
161	AP 34160	Alemite Relief Fitting, 1/8" #317400	2
161-A	925042	Pipe Bushing, 3/8" x 1/8"	2
178	908350	Bolt, Adjusting, 1" x 6" Cup Point Set Screw	2
179	903116	Nut, Hex Jam 1"	2
179-A	E 765004	Nut, Square 1"	2
191	927803	Pipe Plug, Flush 3/8"	2
192	SP10746	Oil Seal,	2
194	YM 60008	Saddle	1
199	DM 34768	Saddle Bearing Base	1
199-A	VM 60010	Saddle Bearing Cap	2
200	WM 05793	Bushing, Saddle	2
325	VM 60009	U-Bolt 1"	2
326	903016	Nut, Hex 1"	4
352	904118	Lock Washer 1"	4

PB-160A-3.1

Printed in U.S.A.

# Bethlehem PUMPING UNITS



<u>Item No.</u>	<u>Part No.</u>	<u>Description</u>	<u>No. Req'd.</u>
	CM 34941	WRIST PIN BEARING ASSEMBLY 4SL	1
75	AP 29221	Gasket, W. P. Bearing Housing	1
76	CM 29225	Cap, Bearing	1
77	923907	Pipe Plug	1
78	907250	Cap Screw Hex Head	6
80	CM 29224	Housing, W. P. Bearing	1
83	AP 29222	Bearing, Spherical Roller	1
84	920370	Oil Seal	1
85	BM 34940	Wrist Pin	1
86	916268	Cotter Key	1
87	AM 05226	Nut, Wrist Pin	1
161	AP 04811	Alemite Relief Fitting 1/8" #317400	1
268	AP 23226	Snap Ring	1
292	AP 14327	Alemite Fitting	1