

Bethlehem PUMPING UNITS

PARTS LIST

57-89-42

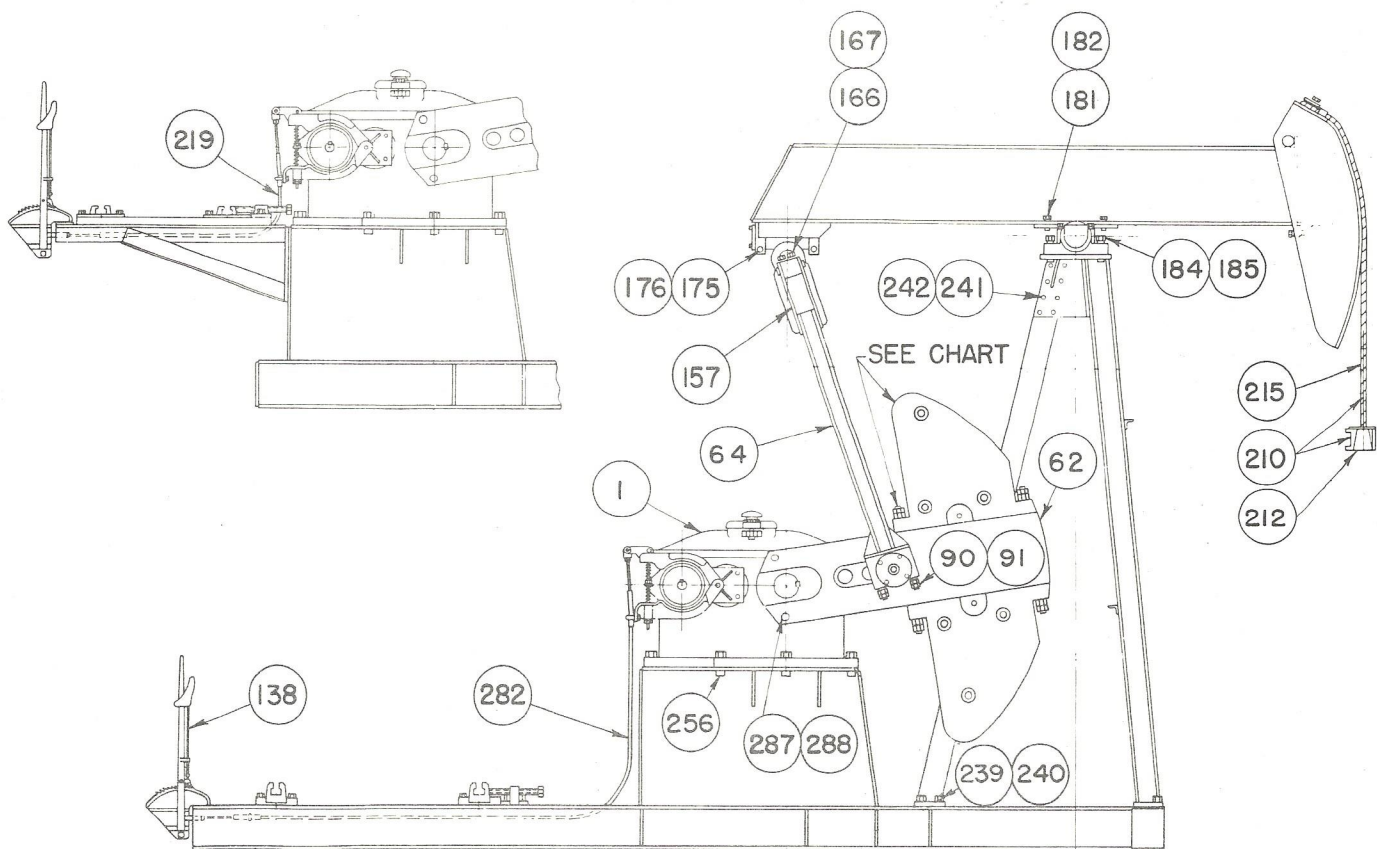
57-76-42

57-89-36

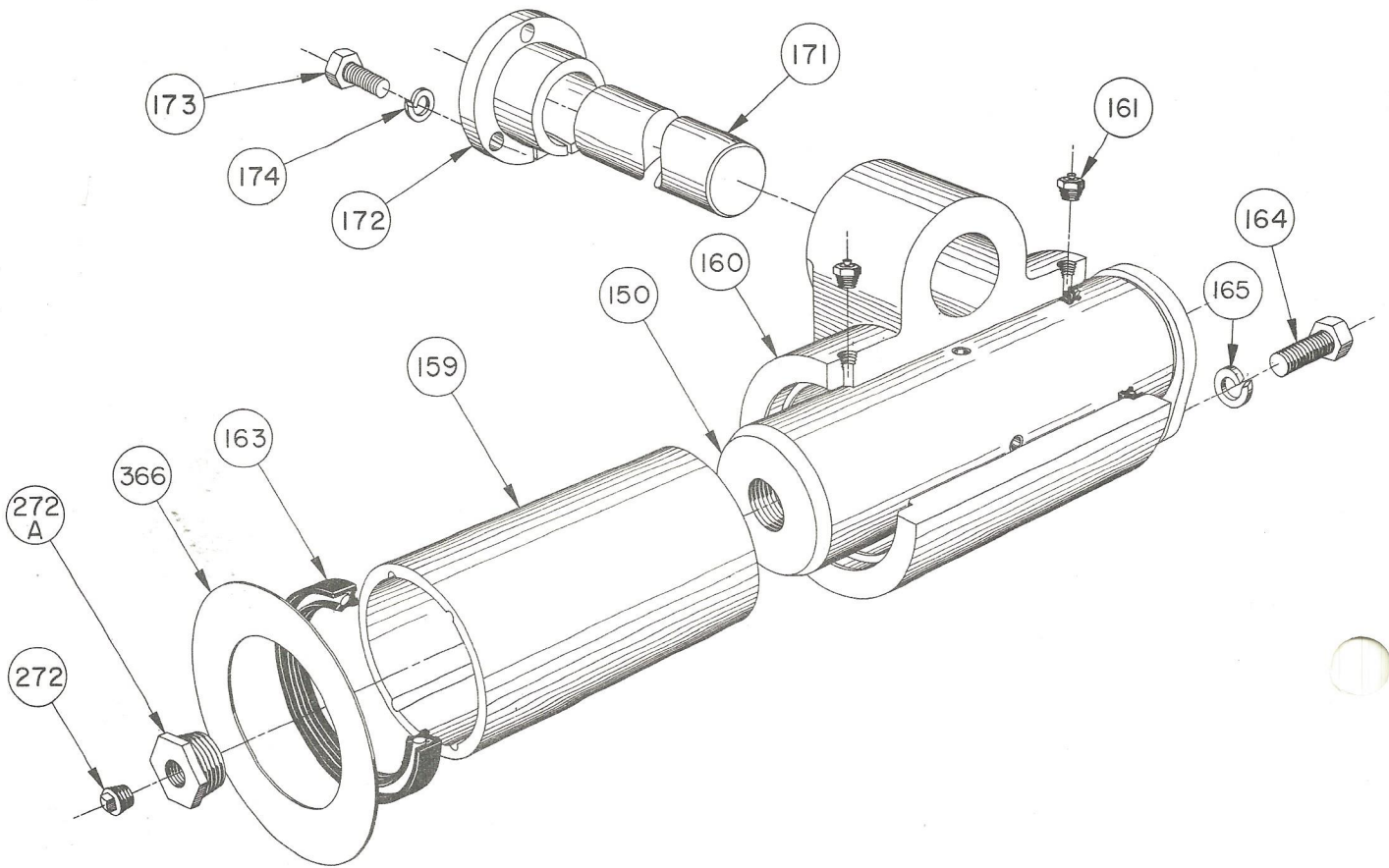
INSTRUCTIONS FOR ORDERING PARTS

The following information must be furnished with all orders for BETHLEHEM API Pumping Unit Parts:

1. Structural designation of Unit, e. g. 57-89-42
2. Serial Number of Unit (This number is stamped on gear box name plate.)

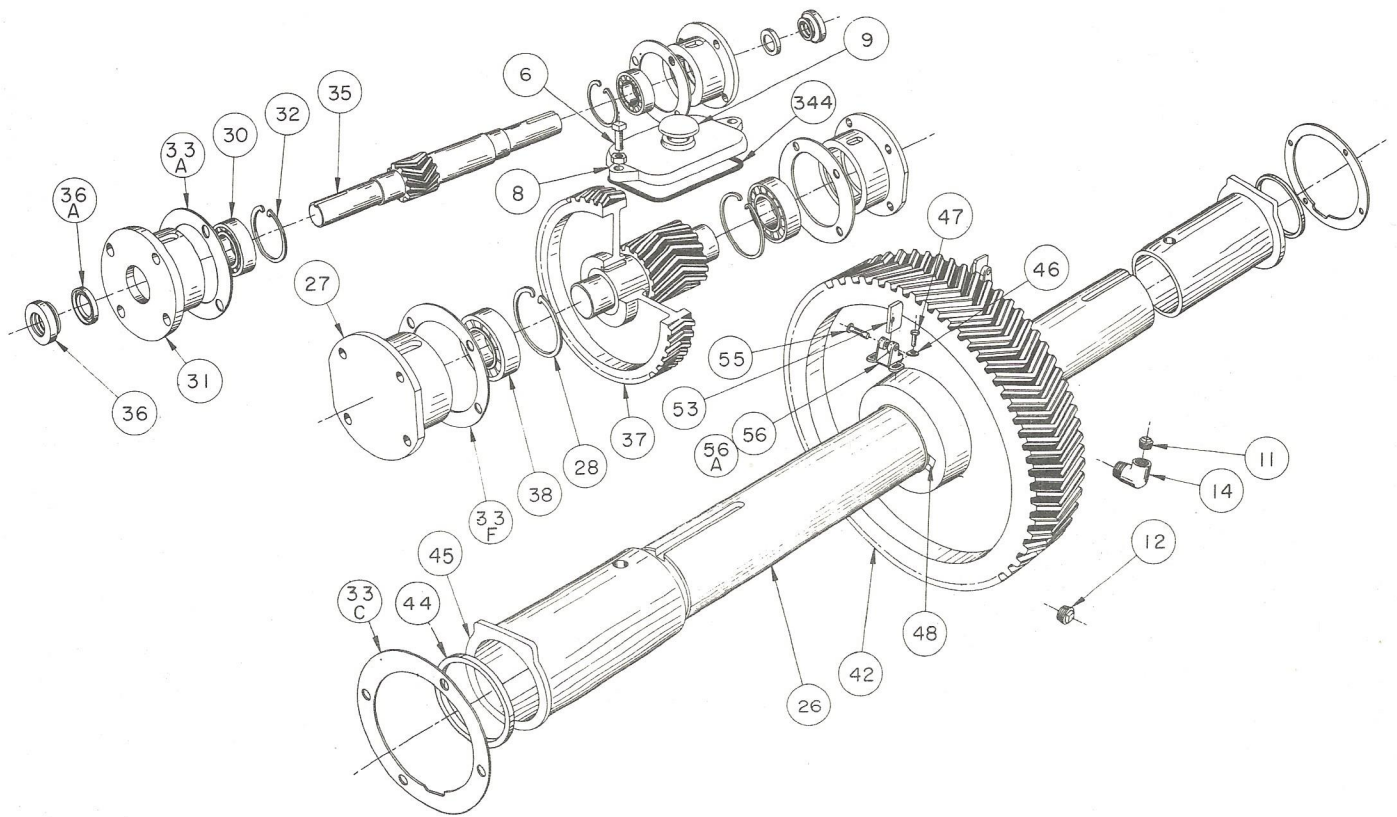


Bethlehem PUMPING UNITS



<u>Item No.</u>	<u>Part No.</u>	<u>Description</u>	<u>No. Req'd.</u>
		ASSEMBLY, EQUALIZER BEARING #E 23	1
150	AM 23237	Shaft, Equalizer Bearing	1
159	AM 34529	Bushing, Equalizer Bearing	1
160	BM 34528	Housing, Equalizer Bearing	1
161	AP 34160	Alemite Relief Fitting 1/8" #317400	2
163	920415	Oil Seal	2
164	907250	Cap Screw	1
165	904108	Lock Washer, 1/2"	1
171	AM 29488	Pin, Equalizer Bearing to Beam	1
172	AM 29487	Adjusting Bushing, Bearing to Beam	1
173	907170	Cap Screw, for Adj. Bushing	3
174	904106	Lock Washer, 3/8"	3
272	927902	Pipe Plug	1
272-A	925244	Pipe Bushing	1
366	AM 20035	Shim, Equalizer Bearing	1

Bethlehem PUMPING UNITS



57DC GEAR REDUCER

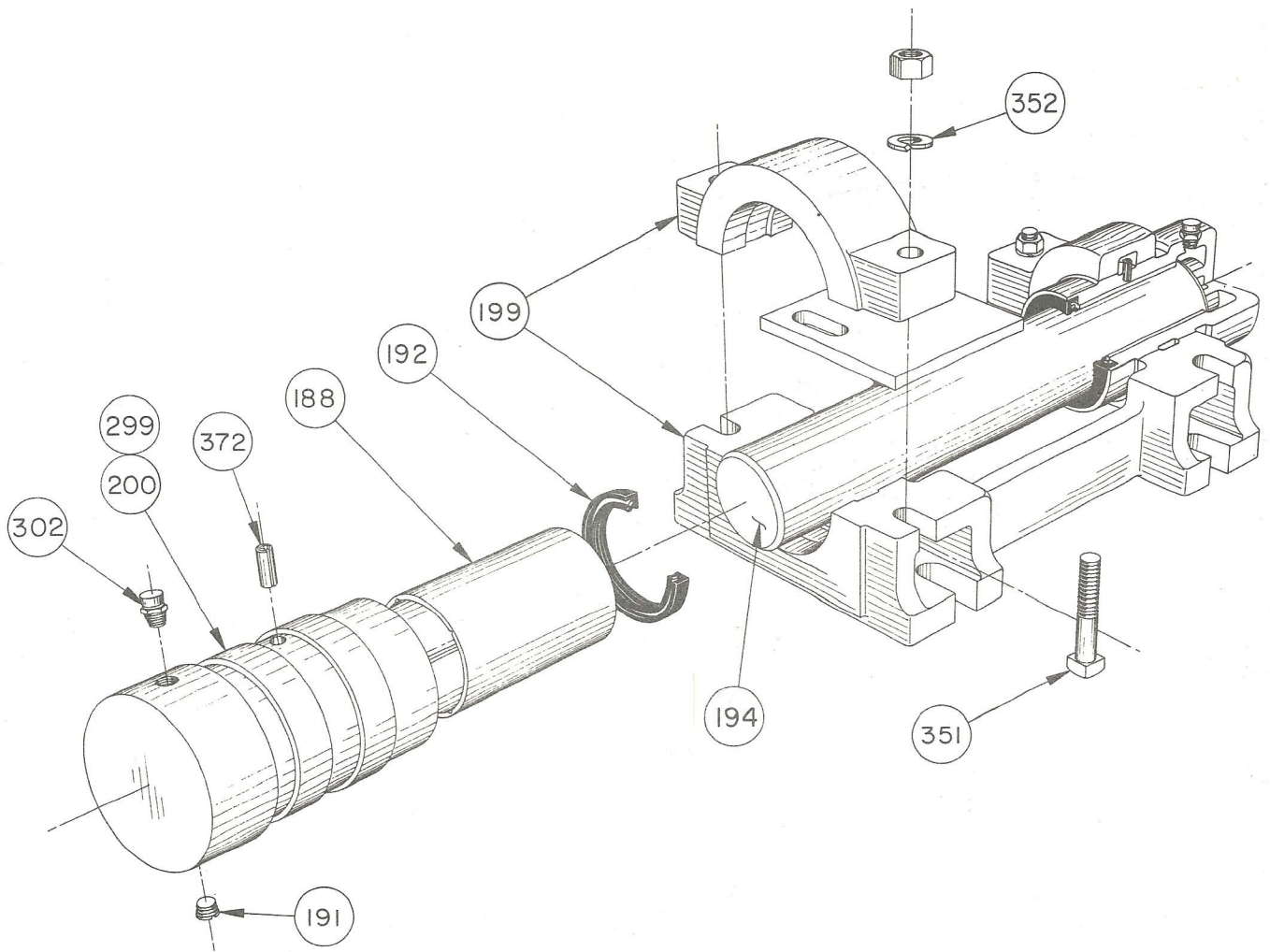
Item No.	Part No.	Description	No. Req'd.	Item No.	Part No.	Description	No. Req'd.
6	902292	Bolt, Inspection Cover, 1/2x3-1/2 w/Nut	2	35	BM 35506	H. S. Pinion	1
8	BM 35489	Inspection Cover	1	36	Not Used	Oil Seal, H. S. Shaft	
9	AP 12944	Breather	1	36A	AM 35564	Slinger, H. S. Shaft	2
11	923803	Plug (3/8" Sq. Hd. Pipe)	1	37	BM 25675	S. S. Pinion & H. S. Gear Assy.	1
12	923810	Plug (1" Sq. Hd. Pipe)	1	38	952012	Bearing, S. S. Pinion	2
14	923203	Street Ell (3/8")	1	42	CM25674	S. S. Gear	1
26	BM 05121	Crank Shaft (or S. S. Shaft)	1	44	BM 27022	Slinger, S. S. Shaft	2
27	AM 05087	S. S. Pinion Bearing Carrier	2	45	BM 35452	Bushing, Crank Shaft	2
28	AP 05025	S. S. Pinion Bearing Carrier Snap Ring	2	46	AM 16506	Lock Washer, Oil Wiper	4
30	952010	H. S. Pinion Bearing	2	47	907168	Capscrew, Oil Wiper 3/8 x 1	4
31	BM 35520	H. S. Pinion Bearing Carrier	2	48	AM 05109	Key, S. S. Gear	1
32	AP05089	H. S. Pinion Bearing Carrier Snap Ring	2	53	AM 35557	Blade, Oil Wiper	2
33	AM 36104	Gaskets, Complete Set (Except Inspection Cover)	1	55	AM 05433	Pin, Blade to Bracket	2
33A	AP07660	H. S. Pinion Bearing Carrier, Gasket	2	56	BM 31483	Bracket, Oil Wiper	2
33C	AP 36232	Gasket, Crankshaft Oil Seal	2	56A	AM 35560	Assembly, Oil Wiper (Items 53, 55 & 56)	2
33F	AP 07660	Gasket, S. S. Pinion Bearing Carrier	2	344	AP 35550	Gasket, Inspection Cover	1

STRUCTURAL COMPONENTS

Item No.	Part No.	Description	No. Req'd.
1	DM 35450	Assembly, Reducer, 57DC	1
62	CM 29387	Crank, 3644-B	2
64	BM 35023	Pitman, 55-3/4" Centers	2
90	902580	Bolt, Mach. w/Hex Nut, 7/8" x 8" (Pitman to Wrist Pin)	4
91	903114	Nut, Jam, 7/8" (Pitman to Wrist Pin)	4
157	AM 29633	Assembly, Crossbeam and Tailbearing	1
166	902386	Bolt, Mach. w/Hex Nut, 5/8" x 4-1/2" (Pitman to Crossbeam)	8
167	904112	Washer, Lock, 5/8" (Pitman to Crossbeam)	8
175	902480	Bolt, Mach. w/Hex Nut, 3/4" x 5-1/2" (Tailbearing to Beam)	2
176	904114	Washer, Lock, 3/4" (Tailbearing to Beam)	2
181	902462	Bolt, Mach. w/Hex Nut 3/4" x 2" (Saddle to Beam)	4
182	904114	Washer, Lock, 3/4" (Saddle to Beam)	4
184	902560	Bolt, Mach. w/Hex Nut, 7/8" x 3" (Saddle Bearing to Post)	4
185	904116	Washer, Lock, 7/8" (Saddle Bearing to Post)	4
210	BM 30860	Assembly, Wire Line (89-42 and 76-42)	1
212	BM 10827	Carrier Bar	1
215		Wire Line, Size 3/4" x 12'-6" (89-42 and 76-42) 3/4" x 11'0" (89-36)	1
219	BP-21610	Brake Cable, 7'-0", Elevated Electric Motor	1
239	902464	Bolt, Mach. w/Hex Nut, 3/4" x 2-1/4" (Post to Base)	7
240	904114	Washer, Lock, 3/4" (Post to Base)	7
241	902370	Bolt, Mach. w/Hex Nut, 5/8" x 1-3/4" (Rear to Front Post Leg)	14
242	904112	Washer, Lock, 5/8" (Rear to Front Post Leg)	16
256	902560	Bolt, Mach. w/Hex Nut, 7/8" x 3 (Reducer to Sub Base)	7
282	BP 13467	Brake Cable, 10'-6", High Speed Engine	1
287	928482	Bolt, Mach. Less Nut, 3/4" x 6" (Counterweight Stop)	4
288	903112	Nut, Jam (Counterweight Stop)	4

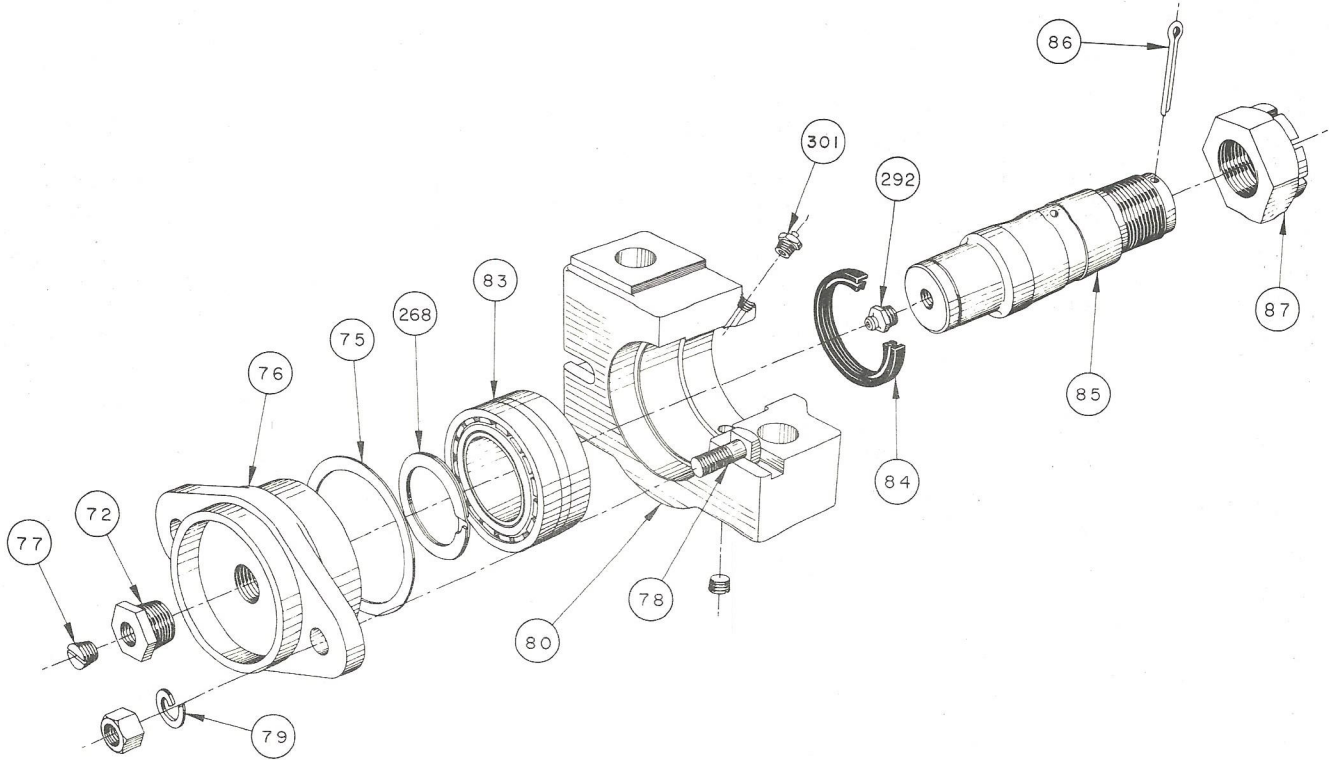
COUNTERWEIGHT BOLTS: QUANTITY, SIZE, PART NUMBER			
Counter Weight	45	40	35
Size and Part Number	CM 36952	BM 36951	BM 36957
Quantity of Bolts	2 Bolts	2 Bolts	2 Bolts
Bolt Size and Part Number	1" x 6" A-4782	1" x 6" A-4782	1" x 6" A-4782

Bethlehem PUMPING UNITS



<u>Item No.</u>	<u>Part No.</u>	<u>Description</u>	<u>No. Req'd.</u>
	AM 31292	Saddle Bearing Assembly - 6CA	1
188	AM 04780	Bushing, Center Bearing	2
191	927901	Pipe Plug	3
192	920350	Oil Seal	2
194	BM 18128	Saddle	1
199	AM 31370	Assembly, Base and Cap	1
200	AM 31404	Assembly, Bearing Housing with Bushing and Seal	2
299	BM 31367	Bearing Housing	1
302	AP 32404	Alemite Relief Fitting	1
351	902382	Bolt, Mach. w/Hex Nut 5/8" x 3-1/2"	4
352	904112	Lock Washer, 5/8"	4
372	AM 31369	Roll Pin, Bearing Housing to Cap	2

Bethlehem PUMPING UNITS



<u>Item No.</u>	<u>Part No.</u>	<u>Description</u>	<u>No. Req'd.</u>
	CM 34439	WRIST PIN BEARING ASSEMBLY #6S	2
72	925122	Bushing	2
75	AP 34863	Gasket, W. P. Bearing Housing	2
76	CM 34393	Cap, Bearing	2
77	927901	Pipe Plug	2
78	902282	Bolt, Mach. w/Hex Nut 1/2 x 2	4
79	904108	Lock Washer - 1/2"	4
80	CM 34399	Housing, W. P. Bearing	2
83	AP 34233	Bearing, Spherical Roller	2
84	920280	Oil Seal	2
85	BM 34499	Wrist Pin	2
86	916264	Cotter Key	2
87	AM 11314	Nut, Wrist Pin	2
268	918178	Snap Ring	2
292	AP 34160	Alemite Fitting	2
301	AP 34160	Alemite Relief Fitting	2