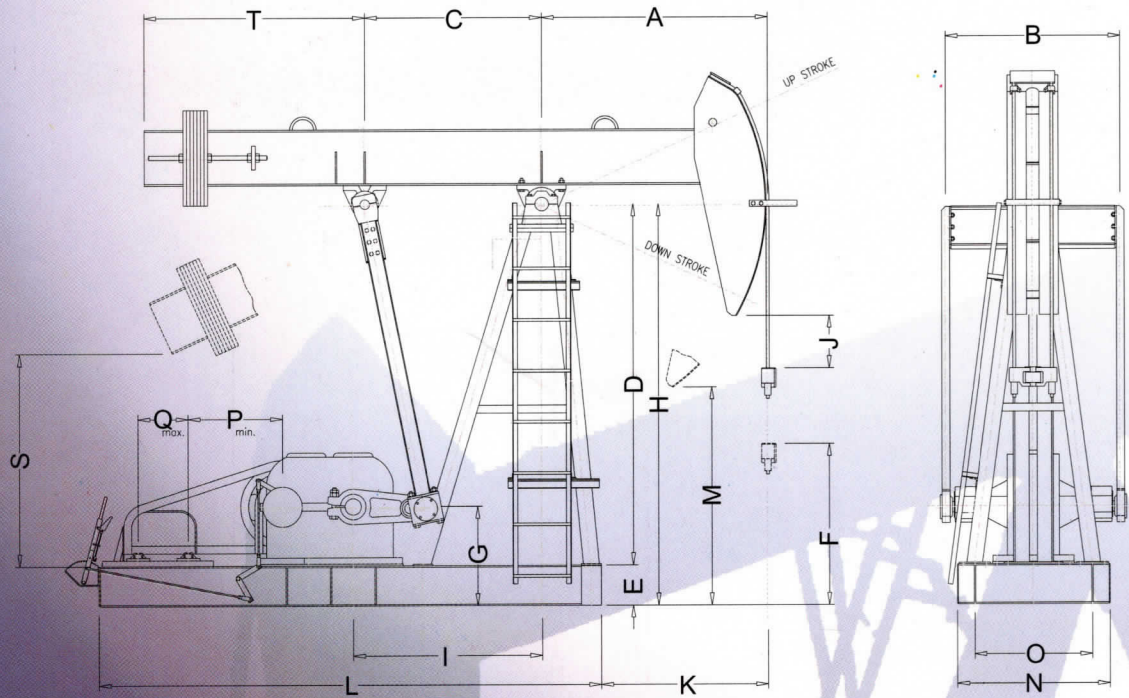




BUKAKA

PUMPING UNIT

BUKAKA BEAM BALANCED PUMPING UNIT

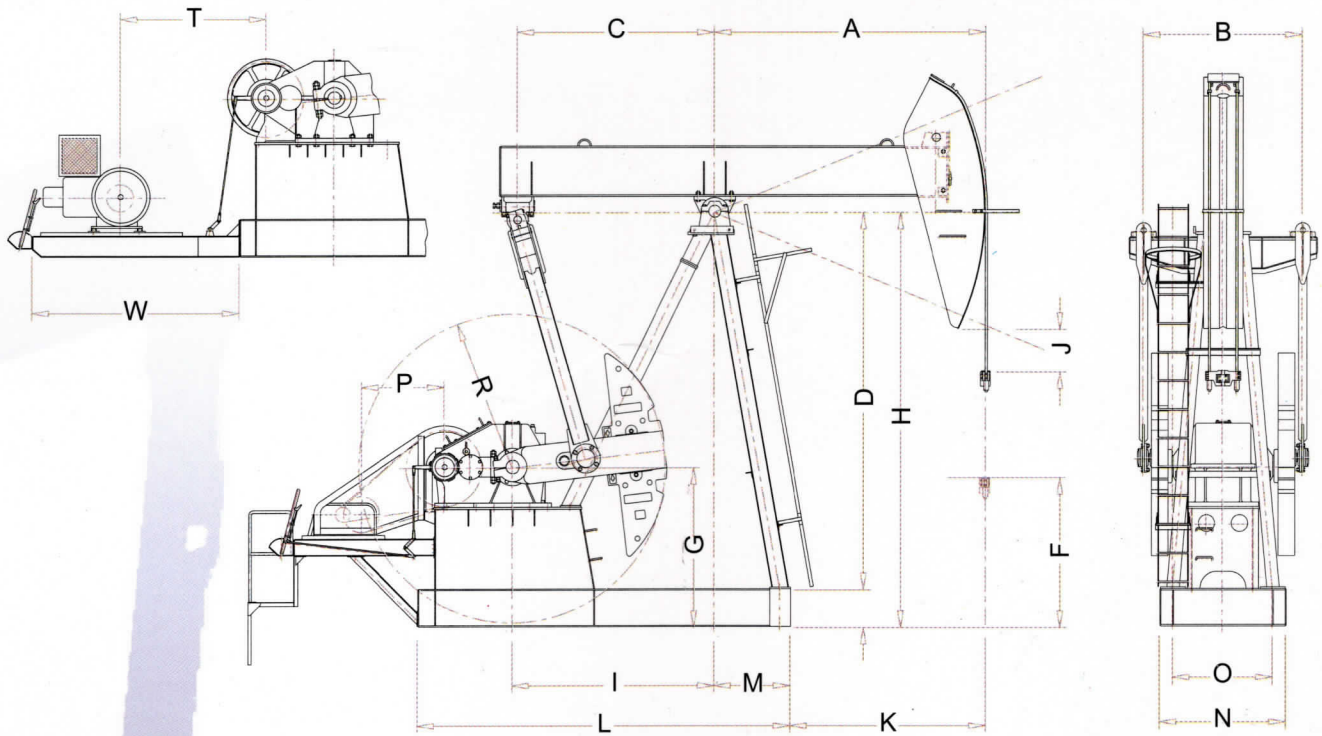


UNIT	STROKE IN	A	B	C	D	E	F	G	H	I	J	K	L	M	N	O	P	Q	S	T
B.250-53-30	30" ; 24" ; 20" ; 16"	1000	1005	825	2150	200	1129	566	2350	875	340	600	3000	1550	900	700	700	700	1350	1300
B.250-67-30	30" ; 24" ; 20" ; 16"	-	-	-	-	-	-	-	-	-	-	-	-	-	-	-	-	-	-	-
B.250-56-36	36" ; 30" ; 24" ; 20"	1200	-	-	-	-	990.8	-	-	-	-	800	-	1430	-	-	-	-	-	-
B.250-67-36	36" ; 30" ; 24" ; 20"	-	-	-	-	-	-	-	-	-	-	-	-	-	-	-	-	-	-	-
B.400-89-36	36" ; 31.5" ; 28.5" ; 25"	-	-	1266.5	2150	-	1340.8	575	2700	1275	400	700	3000	1780	1000	800	-	600	1425	1600
B.400-76-42	42" ; 37" ; 33" ; 29"	1350	1142	1225	-	-	1166.6	-	-	-	-	850	-	1675	-	-	-	-	-	-
B.400-89-42	42" ; 37" ; 33" ; 29"	-	-	-	-	-	-	-	-	-	-	-	-	-	-	-	-	-	-	-
B.400-76-48	48" ; 42" ; 38" ; 33.5"	1500	-	1194.5	-	-	-	-	-	-	-	1200	-	1520	-	-	-	-	1445	-
B.570-109-42	42" ; 33" ; 31" ; 25"	1350	-	1226.5	-	-	-	672	-	1300	-	850	3000	1675	1050	-	-	500	1475	1500
B.570-95-48	48" ; 39" ; 35.5" ; 29"	1500	1270	1196	-	-	1015.4	-	-	-	-	1000	-	1520	-	-	-	-	-	-
B.570-109-48	48" ; 39" ; 35.5" ; 29"	-	-	-	-	-	-	-	-	-	-	-	-	-	-	-	-	-	-	-
B.570-76-54	54" ; 44" ; 40" ; 32"	1745	-	1232.5	-	-	1004.2	-	-	-	240	1345	-	1400	-	-	-	-	1500	-
B.800-109-42	42" ; 34" ; 31" ; 25"	1350	-	1227	2150	250	1266.6	726	-	-	300	900	3000	1675	-	-	-	-	1375	1600
B.800-95-48	48" ; 39" ; 35.5" ; 29"	1500	1470	1196.5	-	-	1115.4	-	-	-	-	1050	-	1520	-	-	-	-	-	-
B.800-109-48	48" ; 39" ; 35.5" ; 29"	-	-	-	-	-	-	-	-	-	-	-	-	-	-	-	-	-	-	-
B.800-76-54	54" ; 44" ; 40" ; 32"	1745	-	1232.5	-	-	1104.2	-	-	-	-	1295	-	1400	-	-	-	-	-	-
B.800-76-64	64" ; 51" ; 47.5" ; 38"	2100	-	1249	2150	-	987.2	-	2350	-	-	1550	-	1450	-	-	-	-	-	-

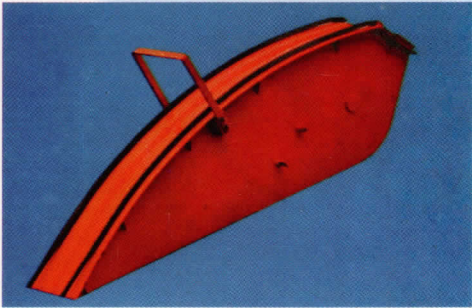
Max represent equal value from above mentioned
Out Line Dimensions - mm

TYPES AND DIMENSIONS
TYPES AND DIMENSIONS
TYPES AND DIMENSIONS

BUKAKA CONVENTIONAL CRANK BALANCED PUMPING UNIT



UNIT	STROKE IN	A	B	C	D	E	F	G	H	I	J	K	L	M	N	O	P	R	T	W
C.25-53-30	30 20	1150	800	865	1900	250	923.4	1050	2150	915	381	837.5	2500	312.5	900	740	650	900	1400	2000
C.25-67-30	30 20	-	-	-	-	-	-	-	-	-	-	-	-	-	-	-	-	-	-	-
C.25-56-36	36 28 20	1200	-	1200	2450	-	1174.8	1125	2700	1250	508	937.5	2850	-	-	-	-	1050	1600	2424
C.25-67-36	36 28 20	-	-	-	-	-	-	-	-	-	-	-	-	-	-	-	-	-	-	-
C.40-89-36	36 28 20	-	1190	-	-	-	-	-	-	-	-	-	-	-	-	-	-	-	-	-
C.40-76-42	42 33 23	1400	-	-	-	300	-	-	-	-	-	850	-	550	-	-	-	-	-	-
C.40-89-42	42 33 23	-	-	-	2400	-	-	-	-	-	-	-	-	-	-	-	-	-	-	-
C.40-76-48	48 37 26	1600	-	-	-	-	-	-	-	-	-	1050	-	-	-	-	-	-	-	-
C.57-76-42	42 33 23	1400	1362	-	-	-	-	-	-	-	-	850	-	-	1050	800	-	-	-	-
C.57-89-42	42 33 23	-	-	-	-	-	-	-	-	-	-	-	-	-	-	-	-	-	-	-
C.57-95-48	48 37 26	1620	-	1400	2600	-	1002.4	1250	2900	1450	-	1070	-	-	-	-	-	1200	-	-
C.57-109-48	48 37 26	-	-	-	-	-	-	-	-	-	-	-	-	-	-	-	-	-	-	-
C.57-76-54	54 40 27	1820	-	-	2550	350	-	-	-	-	-	1220	-	600	-	-	-	-	-	-
C.57-95-54	54 40 27	-	-	-	-	-	-	-	-	-	-	-	-	-	-	-	-	-	-	-
C.57-109-54	54 40 27	-	-	-	-	-	-	-	-	-	-	-	-	-	-	-	-	-	-	-
C.80-109-48	48 37 25	1620	-	-	2600	300	-	-	-	-	-	1075	-	550	-	-	-	-	-	-
C.80-133-48	48 37 25	-	1540	-	2500	400	-	-	-	-	-	1025	-	575	-	-	-	-	-	-
C.80-119-54	54 41 28	1980	-	1630	3060	-	1437.4	1250	3460	1680	-	1380	-	-	-	-	-	-	-	-
C.80-133-54	54 41 28	-	-	-	-	-	-	-	-	-	-	-	-	-	-	-	-	-	-	-
C.80-119-64	64 52 40	2080	-	1830	3300	-	1419.2	1470	3700	1880	-	-	3500	700	-	-	1150	1400	2100	3000
C.114-133-54	54 40 27	1980	-	1630	3060	-	1437.4	1250	3460	1680	-	1380	2850	575	-	-	650	1200	1600	-
C.114-143-64	64 52 40	2080	1680	1830	3300	-	1419.2	1470	3700	1880	-	1375	3475	712.5	1368	1100	-	-	-	-
C.114-173-64	64 54 43	2100	-	2100	3750	-	1902.4	1700	4150	2150	-	1312.5	4000	-	1778	1200	-	1600	-	-
C.114-143-74	74 62 50	2420	-	-	-	-	-	-	-	-	-	1632.5	-	-	-	-	-	-	2145	-
C.114-119-86	86 72 58	2820	-	-	-	-	1298	-	-	-	-	2032.5	-	-	-	-	1200	-	-	-
C.114-125-100	100 85 70	3277	-	2082	4299	-	1561	1764	4699	2134	-	-	4319	1244.5	-	1206	1150	-	1150	-
C.160-143-64	64 52 40	2080	1760	1830	3300	-	1419.4	1470	3700	1880	-	1375	-	712.5	1368	1100	-	1400	2100	-
C.160-173-64	64 54 43	2100	-	2100	3750	-	1902.4	1700	4150	2150	-	1312.5	-	-	1778	1200	-	1600	-	-
C.160-143-74	74 62 50	2420	-	-	-	-	1632.2	-	-	-	-	1632.5	-	-	-	-	-	-	-	-
C.160-173-74	74 62 50	-	-	-	-	-	-	-	-	-	-	1632.5	-	-	-	-	-	-	-	-
C.160-200-74	74 62 50	-	-	-	-	-	-	-	-	-	-	1632.5	-	-	-	-	-	-	-	-
C.160-173-86	86 72 58	2820	-	-	-	-	1298	-	-	-	-	2032.5	-	-	-	-	-	-	2145	-
C.160-173-100	100 86 73	3277	-	2362	4528	450	1790.4	1911	4978	2438	-	2538	4250	939	-	-	1200	1850	2145	-



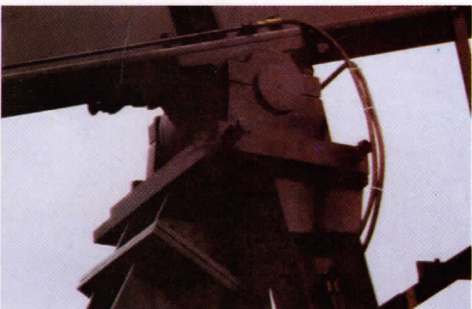
Horsehead and Wire line Assembly :

Easy to align through polished rod without disconnecting well load : of one piece arc plate for greater strength. It is connected to the walking beam by a bar that fits into a saddle on top of walking beam. A pin or round bar with clamp fastener is used for ensuring metal with a groove down the middle of the face to allow for polish rod clearance.



Tail Bearing Assembly :

Bearing type can be design with Double Row Spherical Roller Bearing.
Rating Fatigue Life for Bearing is more than 100,000 hours.
The Housing is made of Ductile Iron.



Saddle Bearing Assembly :

Bearing type can be design with Double Row Spherical Roller Bearing.
API Load Ratio more than 3 (three) with rating Fatigue Life more than 100,000 hours.
The Housing is made of ducting Iron



Structure :

All structural beams are ASTM A36 or JIS SS400

- Base Front Wide Flange
- Base Rear Wide Flange
- Base Side Wide Flange
- Samson Post-Front Wide Flange
- Samson Post-Rear Wide Flange
- Equalizer Wide Flange
- Pitman Wide Flange
- Walking Beam Wide Flange (hot rolled)



Wrist Pin Bearing, Crank and Counterweight Assembly :

The Housing is made of Ductile Iron and Bearing is Double Row Spherical Roller Bearing with Rating Fatigue Life more than 100,000 hours. Crank is made of cast iron class 30 with three or four wrist pin holes allowing for stroke length adjustment.
The tapered Wrist pin holes give high protection againts loosening.

GENERAL SPECIFICATION

PT BUKAKA TEKNIK UTAMA



The Increase of Oil Exploration in Indonesia means the opening of its equipment bussiness.

Since 1985 PT BUKAKA TEKNIK UTAMA has been developing the production of pumping unit to meet the growing demand of Indonesian Oil Companies, means Pertamina, Asamera/Gulf, Husky, Stanvac, and Caltex for duri steam flood proyek which the largest oil field in the world. Design and fabrication based on API Standard bring BUKAKA to be the biggest and the best Pumping Unit Fabricator

ce arc
into
ed

Assembly :

er Bearing
lass 30 with



PT BUKAKA TEKNIK UTAMA