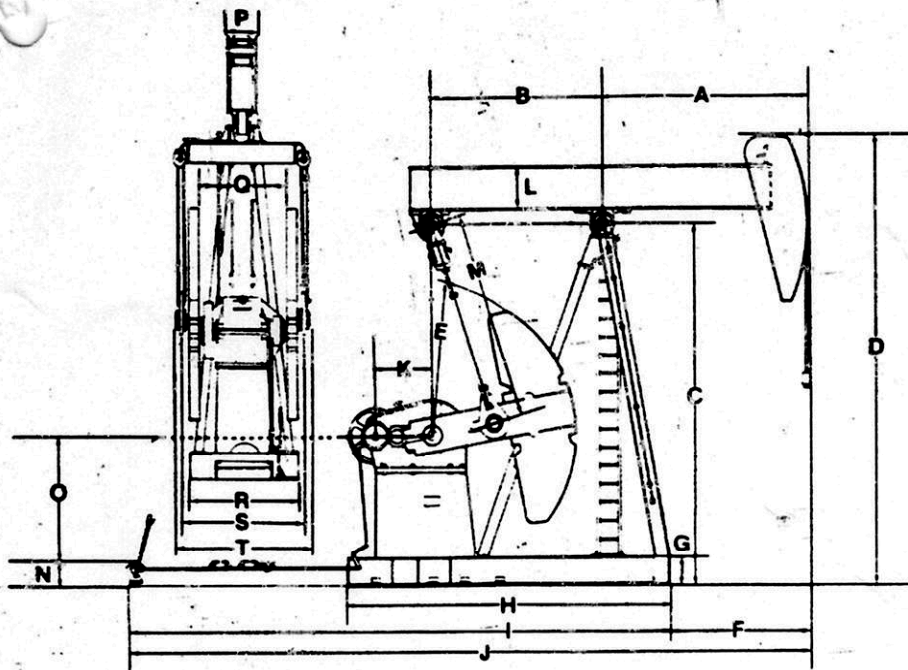


GENERAL DIMENSIONS



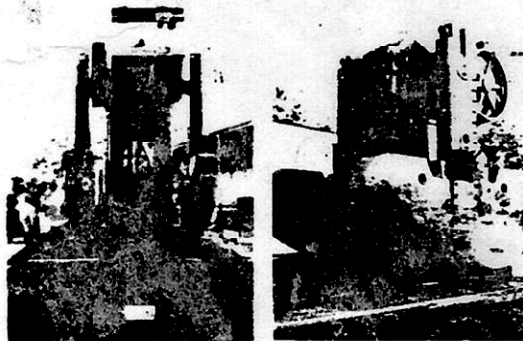
DIMENSIONS SHOWN ARE IN INCHES

	MODEL C-114-D-143-64	MODEL C-160-D-200-74	MODEL C-228-D-246-86	MODEL C-320-D-305-100	MODEL C-456-D-365-120	MODEL C-640-D-365-144
A	96.06	111.02	111.02	129.13	150.98	
B	96.06	111.02	111.02	129.13	150.98	
C	196.25	194.88	231.50	231.50	253.94	
D	240.50	243.31	287.20	287.20	318.70	
E	78.10	76.38	94.49	94.49	102.36	
F	58.66	71.73	86.61	86.61	105.71	
G	14.17	14.17	15.75	15.75	15.75	
H	181.10	193.31	200.79	200.79	222.05	
I	269.68	291.73	328.35	328.35	353.94	
J	328.34	363.46	414.96	414.96	459.64	
K	31.50	33.46	37.40	37.40	42.13	
L	23.18	27.16	27.16	27.16	30.12	
M	116.14	119.29	133.86	133.86	149.61	
N	10.00	13.38	15.75	15.75	15.75	
O	70.00	64.96	80.71	80.71	88.58	
P	15.87	9.86	13.98	13.98	14.96	
Q	47.31	49.21	59.70	59.70	66.70	
R	57.81	58.69	69.69	69.69	75.98	
S	64.31	71.18	82.68	82.68	91.10	
T	73.75	74.64	89.96	89.96	98.98	



HORSEHEAD

The horsehead is of welded construction, consisting of I section and steel plates. There is a semi-circular grooved segment on the top of the horsehead to fit the wire rope with the attached carrier bar and sucker rod string. The horsehead can be turned upward during servicing of the well. The deviation of the horsehead from the centerline of the walking beam can be adjusted with the two bolts positioned on the sides of the horsehead.



CRANK ASSEMBLY

The two cranks are symmetrically installed on the ends of the driven shaft of the gear reducer. The counterweights can be moved along the cranks to vary the counterbalance. Starting from the crankshaft hold centerline, there are graduated marks on the outside surfaces of the cranks and racks to facilitate counterbalancing. To move the counterweights, adjust the crank to the position desired, loosen the square head bolts, and insert the pinion crank into the hole to mesh with the rack. The handle can then be turned to move the counterweight to the required position. The square head bolts may now be tightened.



CENTER BEARINGS

The bearing housing is supported by two extra large self-aligning single row radial roller bearings which are mounted on heavy duty supports at the top of the samson post. Each bearing carries a B-10 rating (100,000 hours of service) under maximum loads assuring long life. All structural bearings are readily available from H.E.M.C. or any local supplier.

MODEL NUMBERING SYSTEM

C-160-D-200-74

