

E. KANSAS

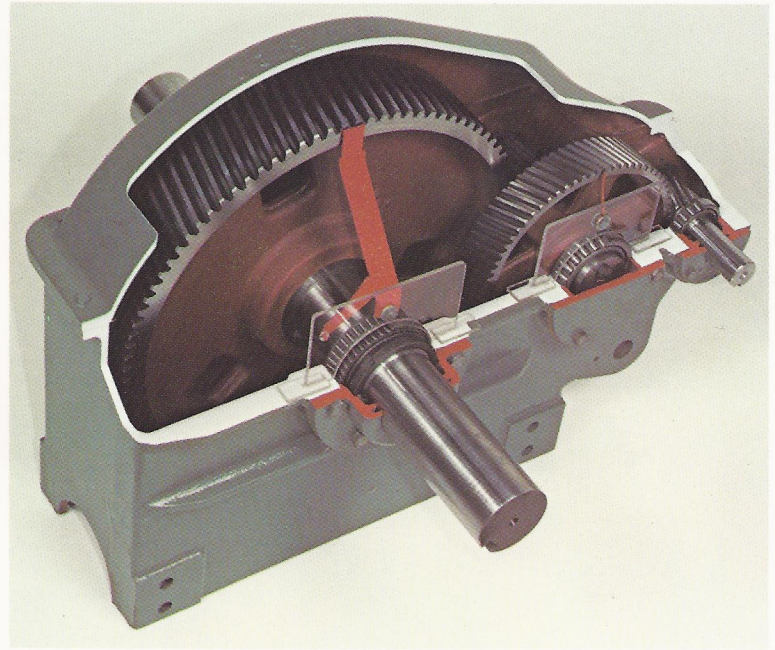
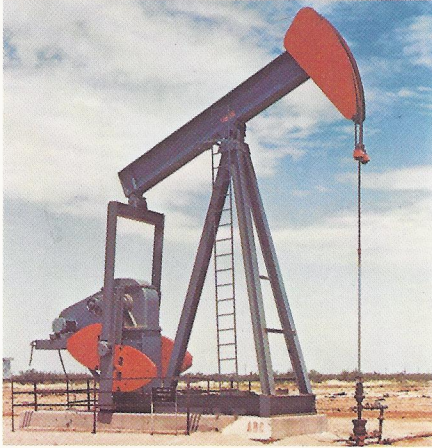


JENSEN

Since 1919

**CRANK BALANCE AND
BEAM BALANCE
PUMPING UNITS**

CRANK BALANCE PUMPING UNITS



Gear Reducer Assembly

Jensen crank balance pumping units feature a unique ball and groove saddle pin retention method which eliminates the need for thrust bearings and alignment devices. This allows a compact low maintenance assembly, and is mounted in a heavy cast iron housing for added strength. The bearing also incorporates a high alloy bearing tube operating within a set of externally caged cylindrical roller bearings for greater life.

The beam pitman bearing and the saddle bearing are of the same general construction. Low pitman and bearing stresses are achieved by the single mounting used in the bearing which is mounted below the walking beam on a pin coaxial with the beam axis. Coupled with the pin mounted wrist pins, this allows the pitman freedom to align under varying conditions which result in a minimum maintenance and long life. All models use a high alloy pin design with cylindrical roller bearings and the Jensen unique ball-and-groove mount.

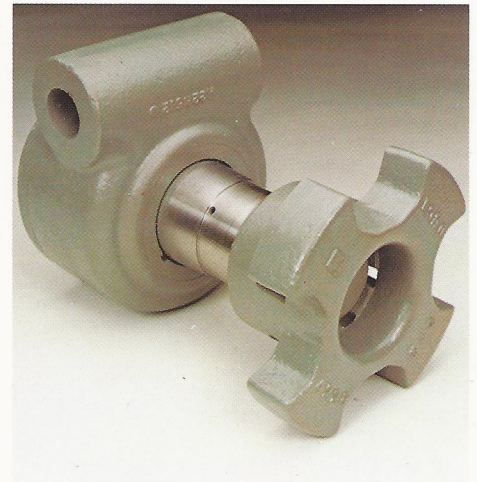
A double row, opposed, tapered bearing design is used in all wrist pins. This allows for both high radial and high thrust loading, which brings longer life under high loading conditions. A sealed grease reservoir, formed within the cast iron housing and requiring less maintenance, is also featured in the assembly.

Quiet operation and longer life are just two of the features of the Jensen time proven gear reducer highlighted by Helical gears in all models.

The first and second stage pinion are of Harden steel, while the first and second stage bull gears are manufactured of Nodular Iron, meeting API specifications.

A heavy reinforced case of one-piece design gives precise bearing and gear alignment. Roller bearings are used throughout the gear reducer. Tapered roller bearings are used on shafts that develop thrust.

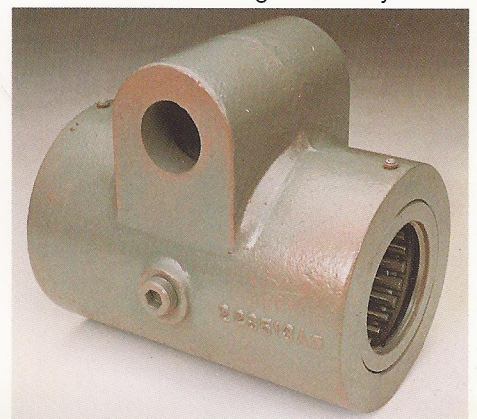
Wrist Pin Assembly



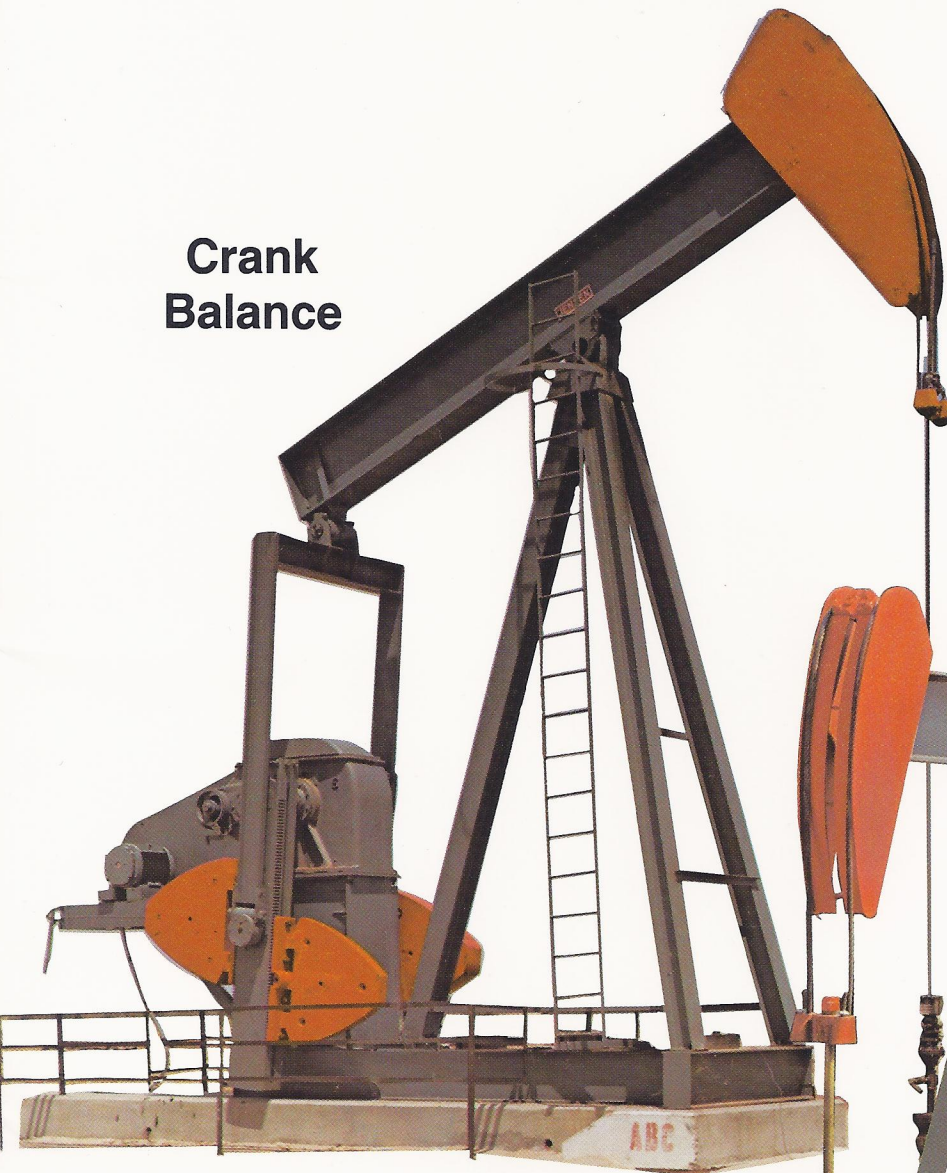
Saddle Bearing Assembly



Beam Bearing Assembly



**Crank
Balance**



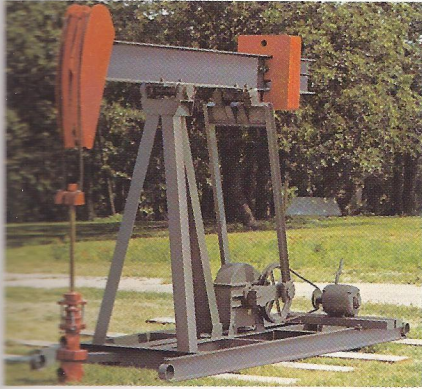
**Beam
Balance**



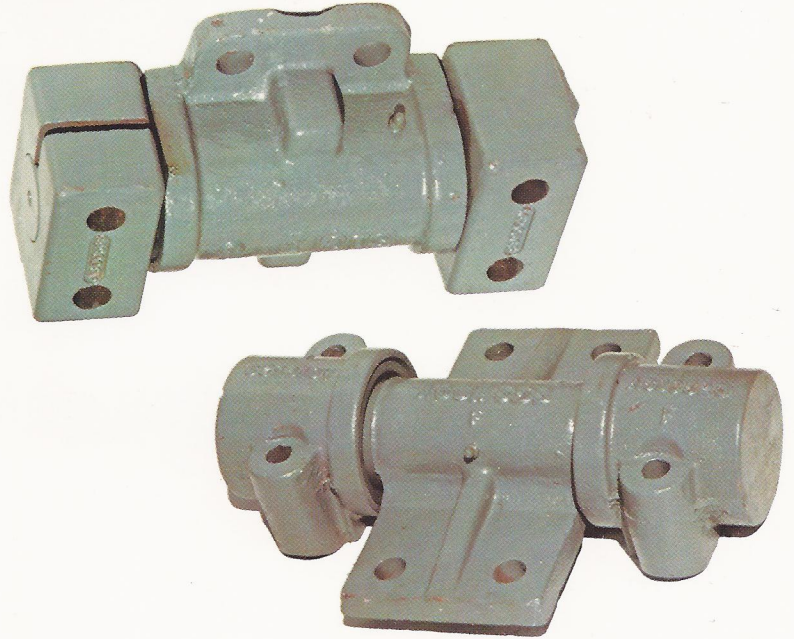
QUALITY AND SERVICE THROUGH PEOPLE AND PRECISION ENGINEERING.

14TH & PACIFIC STREETS
COFFEYVILLE, KANSAS 67337
(316) 251-5700

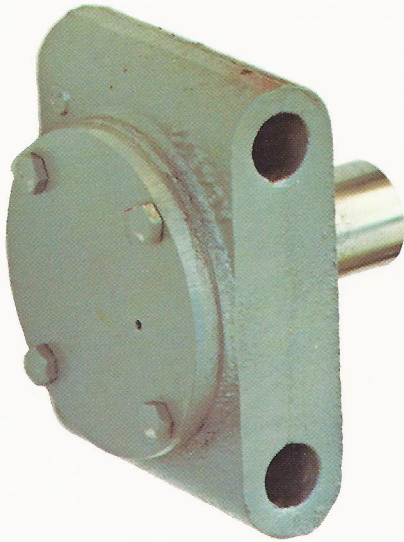
BEAM BALANCE PUMPING UNITS



Beam Pitman Bearing Assembly



Saddle Bearing Assembly



Wrist Pin Assembly

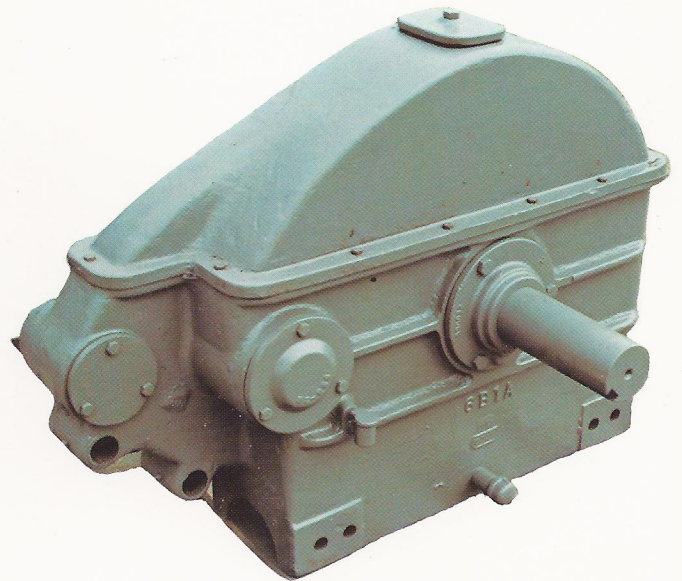
The Beam Balanced pumping units feature Wrist Pins that are prepacked at the Jensen factory for longer life and less in-field maintenance.

Wrist Pins are self aligning with double row ball bearings operating in cast iron housing.

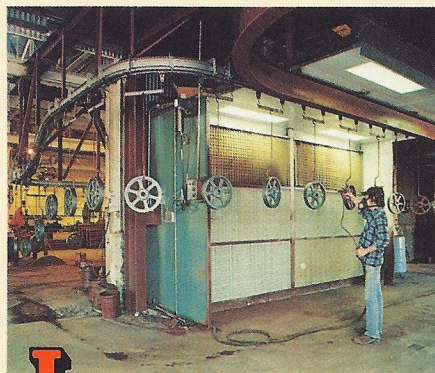
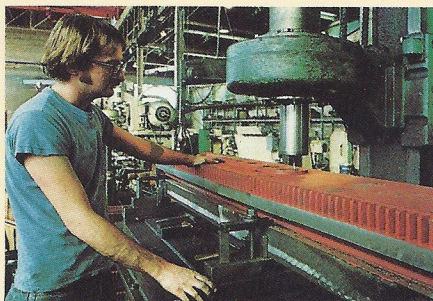
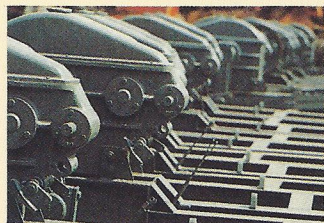
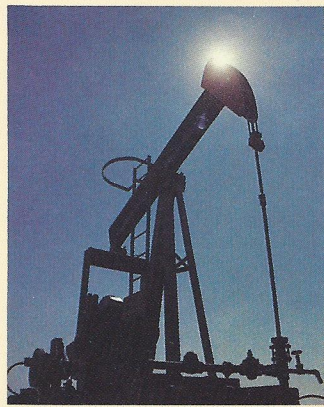
All models feature rugged cast iron alloy saddle bearings and beam pitman bearings. These high alloy bearings have a larger than average bearing surface with a built-in grease reservoir. The result is longer life and less maintenance downtime.

Beam Balanced pumping units feature Gear Reducer housings manufactured of one piece cast alloy construction with shear type mounting directly to the pumping unit frame. This design achieves less stress on the fastening assembly, and also provides a critical safety factor over flange mounted units.

The Gear Reducer also features a larger diameter Bull Gear than found on other models in the industry. The larger diameter gearing means lower tooth pressure which produces a gear drive train that absorbs higher impacts without damage.



Gear Reducer Assembly

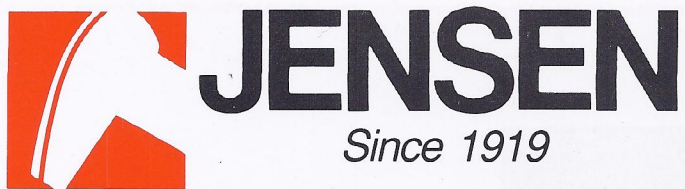


In the early 1900's **Jensen** manufactured its first rod type pumping unit. And now, for more than sixty years the name **Jensen** has become synonymous with quality dependable pumping units.

With its own foundry and complete in-house manufacturing, including gear reducers, total capability and performance have been the practice not the exception at **Jensen**.

We believe people are the key, qualified, professionals dedicated to producing the finest pumping units available.

Jensen . . . *quality and service through people and precision engineering.*



"J" SERIES PUMPING UNITS

MODELS: 40A76J48 / 40A89J36 / 40A89J42



FEATURES:

- Cast Alloy Bearings.
- Easy Cable Replacement.
- Wrist Pin: Double Ball Bearing Self Aligning.
- Deeper Horse Head.
- Deeper Walking Beam.
- Gear Reducer Has Shear Pin Type Mountings.

SPECIFICATIONS

MODELS: 40A76J48 / 40A89J36 / 40A89J42

GEAR REDUCER

PULLEY DIAMETER	#GROOVES PULLEY	GEAR OIL	TORQUE	PULLEY SHAFT DIA. PULLEY	GEAR RATIO
22 1/2"	3-B	4 Gal.	40,000#	1 1/2"	30.76:1

FORMULA FOR BELT LENGTH AND MOTOR PULLEY SIZE.

Belt Length = (Pitch Dia. Jack Pulley + Pitch Dia. Motor Pulley) X 1.57 + (2 X Center Distance).

Pitch Dia. Motor Pulley = (Pitch Dia. Jack Pulley X Gear Ratio X S.P.M.) ÷ R.P. Motor

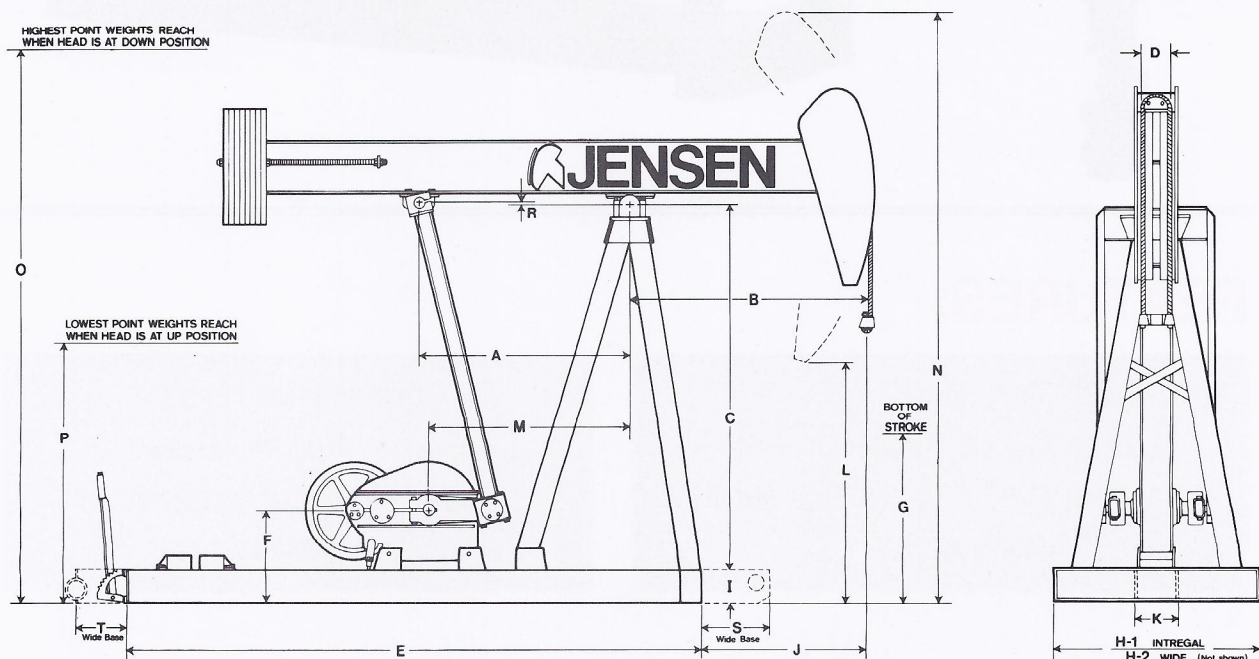
Center distance for electric motors and small single cylinder gas engines is 30-7/16"

STRUCTURE

RATING UNIT SIZE	RECOMMENDED PPRL	WALKING BEAM SIZE	POLISHED ROD STROKE	SADDLE BEARING RATED CAPACITY	BEAM PITMAN RATED CAPACITY CALCULATED LOAD	WRIST PIN BEARING RATED B-10 LIFE	COUNTER BALANCE BEAM WT.	HORSEPOWER	
								MPRL	PPRL
40A89J36	8,900#	14" x 34#	36 / 31 1/2" 28 3/4 / 24 1/2"	30,000#	11,250#	45,000 Hrs.	170#	4.2	12.7
40A89J42	8,900#	14" x 34#	42 / 37" 34 3/4 / 30 1/2"	30,000#	11,250#	45,000 Hrs.	170#	4.2	12.7
40A76J48	7,600#	14" x 34#	48 / 42" 39 3/4 / 35"	30,000#	11,250#	45,000 Hrs.	170#	4.2	12.7

GENERAL DIMENSIONS

UNIT SIZE	A	B	C	D	E	F	G	H ₁	H ₂	I	J	K	L	M	N	O	P	R	S	T
40A89J42	44	50	84	6	133 3/4	24	37 1/2	40	44 1/2	8	38 3/4	7 3/4	51 1/2	44 1/32	134 1/2	153	47	-1/2	12 1/4	8
40A89J36	44	42 3/4	84	6	133 3/4	24	43	40	44 1/2	8	31 1/2	7 3/4	58	44 1/32	128	152	47	-1/2	12 1/4	8
40A76J48	44	57	84	6	133 3/4	24	32	40	44 1/2	8	45 3/4	7 3/4	46 1/2	44 1/32	140	152	47 1/2	-1/2	12 1/4	8





JENSEN

Since 1919

SUPER "E" SERIES PUMPING UNITS

MODELS: 57B109E48/57B76E54

80B109E48

#57 Frame with 80 Gear Box



FEATURES:

- Cast Alloy Bearings
- Easy Cable Replacement
- Wrist Pin: Heavy Duty Double Tapered Roller Bearings
- Extended Peak Torque Capacity
- Deeper Walking Beam
- Gear Reducer Has Shear Pin Type Mountings

SPECIFICATIONS

MODELS: 57B109E48/57B76E54

GEAR REDUCER

PULLEY DIAMETER	#GROOVES PULLEY	GEAR OIL	TORQUE	PULLEY SHAFT DIA. PULLEY	GEAR RATIO
22½"	4-B	30 Qts.	57,000"#	1¾"	30.4:1

FORMULA FOR BELT LENGTH AND MOTOR PULLEY SIZE.

Belt Length = (Pitch Dia. Jack Pulley + Pitch Dia. Motor Pulley) × 1.57 + (2 × Center Distance).

Pitch Dia. Motor Pulley = (Pitch Dia. Jack Pulley × Gear Ratio × S.P.M.) ÷ R.P. Motor

STRUCTURE

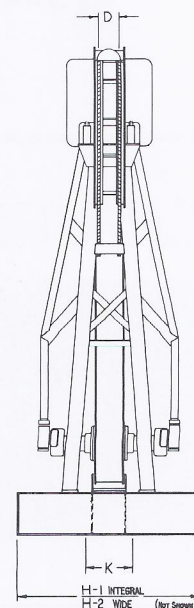
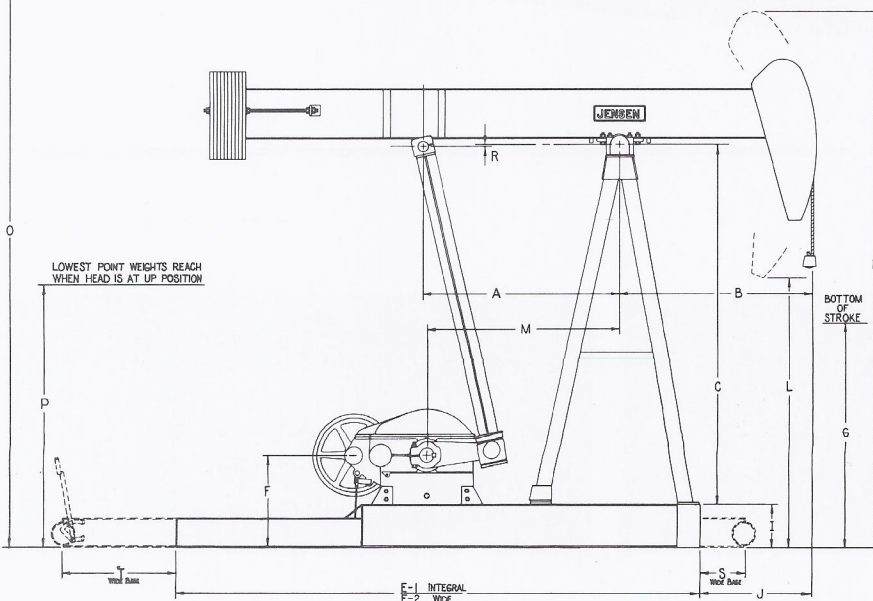
RATING UNIT SIZE	RECOMMENDED PPRL	WALKING BEAM SIZE	POLISHED ROD STROKE	SADDLE BEARING RATED CAPACITY	BEAM PITMAN BEARING RATED CAPACITY	WRIST PIN BEARING RATED B-10 LIFE	COUNTER BALANCE BEAM WT.	HORSEPOWER	
								MPRL	PPRL
57B109E48	10,900#	16" × 45#	48/44¼"	50,000#	24,470#	54,000 Hrs.	170#	6.1	15.6
57B76E54	7,600#	16" × 40#	54/49¾"	50,000#	24,470#	54,000 Hrs.	170#	6.1	15.6

GENERAL DIMENSIONS

UNIT SIZE	A	B	C	D	E	F	G	H ₁	H ₂	I	J	K	L	M	N	O	P	R	S	T	U
57B109E48	65½"	64	110" 1/16"	5¾"	211¼"	29½"	44	52½"	60	12	34¾"	15½"	71	64	171			1/16"	18¼"	10¾"	115½"
57B76E54	65½"	72	110" 1/16"	5¾"	211¼"	29½"	38	52½"	60	12	42¾"	15½"	64	64	177			1/16"	18¼"	10¾"	115½"

HIGHEST POINT WEIGHTS REACH WHEN HEAD IS AT DOWN POSITION

LOWEST POINT WEIGHTS REACH WHEN HEAD IS AT UP POSITION





Crank Balance Pumping Units

Also 80A109R48 #57 Frame/#80 Gear Box

MODELS: 57A109R48/57A76R54



FEATURES:

- Cast Alloy Bearing Housing With Roller Bearings
- Easy Cable Replacement
- Wrist Pin: Heavy Duty Double Tapered Roller Bearings
- Extended Peak Torque Capacity
- Deeper Walking Beam
- Gear Reducer Has Shear Pin Type Mountings

SPECIFICATIONS

MODELS: 57A109R48/57A76R54

GEAR REDUCER

PULLEY DIAMETER	# GROOVES PULLEY	GEAR OIL	TORQUE	PULLEY SHAFT DIA.	GEAR RATIO	PEAK H.P. @ 20 SPM
22½	4-"B"	7½ GAL.	57,000	1¾	30.4:1	18.1

FORMULA FOR BELT LENGTH AND MOTOR PULLEY SIZE.

Belt Length = (Pitch Dia. Jack Pulley + Pitch Dia. Motor Pulley) × 1.57 + (2 × Center Distance).

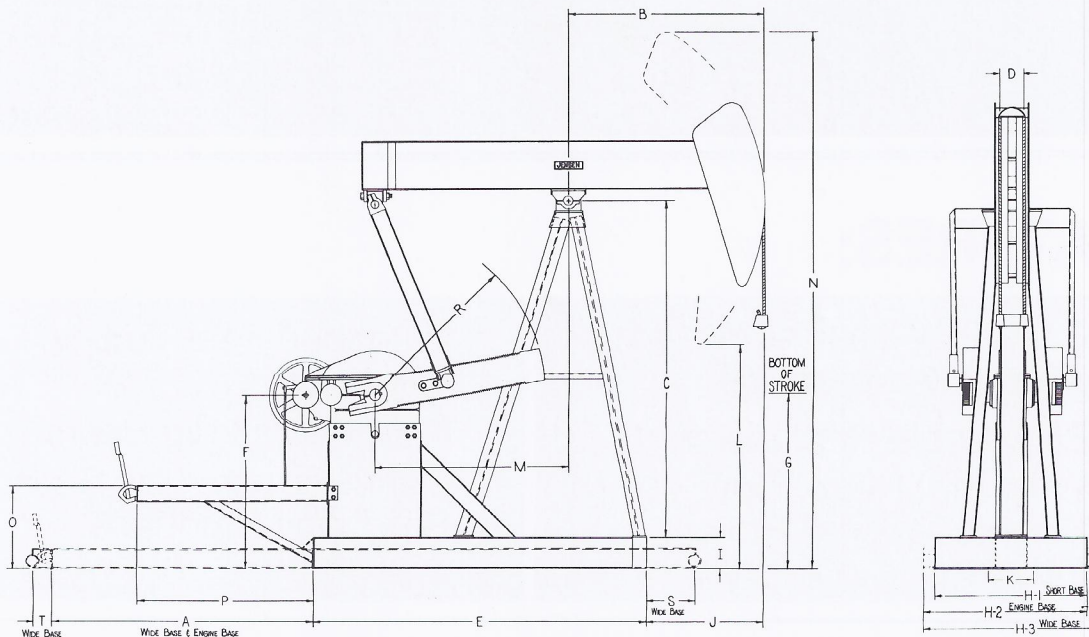
Pitch Dia. Motor Pulley = (Pitch Dia. Jack Pulley × Gear Ratio × S.P.M.) ÷ R.P. Motor

STRUCTURE

RATING UNIT SIZE	RECOMMENDED PPRL	WALKING BEAM SIZE	POLISHED ROD STROKE	SADDLE BEARING RATED CAPACITY	BEAM PITMAN BEARING RATED B-10 LIFE	WRIST PIN BEARING RATED B-10 LIFE
57A109R48	10,900	W16 x 45#	48/39¾/31½	50,000#	35,000	>100,000
57A76R54	7,600	W16 x 40#	54/44¾/35½	50,000#	77,000	>100,000

GENERAL DIMENSIONS

UNIT SIZE	A	B	C	D	E	F	G	H ₁	H ₂	H ₃	I	J	K	L	M	N	O	P	R	S	T
57A109R48	95¾	64	107 ¹¹ / ₁₆	5¾	115½	55	44	52½	56¼	60	12	34¾	15½	71	64	171	34	63 ⁷ / ₈	53	18¼	10 ³ / ₄
57A76R54	95¾	72	107 ¹¹ / ₁₆	5¾	115½	55	38	52½	56¼	60	12	42¾	15½	64	64	177	34	63 ⁷ / ₈	53	18¼	10 ³ / ₄





JENSEN

Since 1919

Crank Balance Pumping Units

MODELS: 80A133R48/80A133R54/
80A119R64



FEATURES:

- Cast Alloy Bearing Housing With Roller Bearings
- Easy Cable Replacement
- Wrist Pin: Heavy Duty Double Tapered Roller Bearings
- Extended Peak Torque Capacity
- Deeper Walking Beam
- Gear Reducer Has Shear Pin Type Mountings

SPECIFICATIONS

MODELS: 80A133R48/80A133R54/
80A119R64

GEAR REDUCER

PULLEY DIAMETER	# GROOVES PULLEY	GEAR OIL	TORQUE	PULLEY SHAFT DIA.	GEAR RATIO	PEAK H.P. @ 20 SPM
23.6	3-"C"	10 GAL.	80,000	2	30.1:1	25.4

FORMULA FOR BELT LENGTH AND MOTOR PULLEY SIZE.

Belt Length = (Pitch Dia. Jack Pulley + Pitch Dia. Motor Pulley) × 1.57 + (2 × Center Distance).

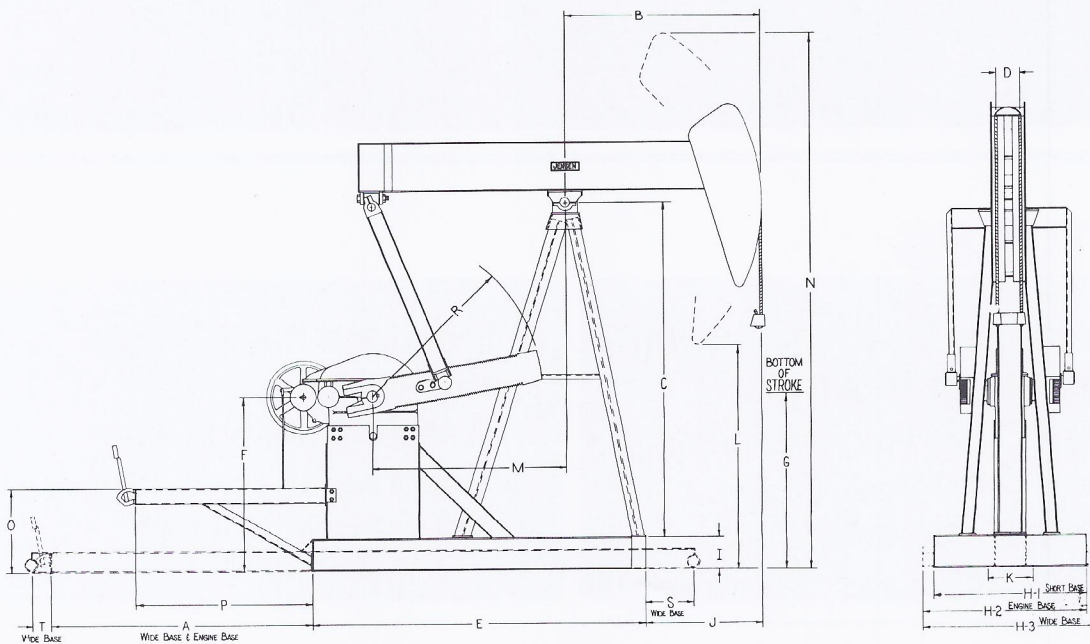
Pitch Dia. Motor Pulley = (Pitch Dia. Jack Pulley × Gear Ratio × S.P.M.) ÷ R.P. Motor

STRUCTURE

RATING UNIT SIZE	RECOMMENDED PPRL	WALKING BEAM SIZE	POLISHED ROD STROKE	SADDLE BEARING RATED B-10 LIFE	BEAM PITMAN BEARING RATED B-10 LIFE	WRIST PIN BEARING RATED B-10 LIFE
80A133R48	13,300	W18 x 50#		>100,000	>100,000	>100,000
80A133R54	13,300	W18 x 55#		>100,000	>100,000	>100,000
80A119R64	11,900	W21 x 62#		>100,000	>100,000	>100,000

GENERAL DIMENSIONS

UNIT SIZE	A	B	C	D	E	F	G	H ₁	H ₂	H ₃	I	J	K	L	M	N	O	P	R	S	T
80A133R48	106¼	64	131¼	7	132	60½	66	61½	67	72½	14	31⅝	19½	95	72¼	200	34	64⅞	59	23¾	12
80A133R54	106¼	72	131¼	7	132	60½	60	61½	67	72½	14	39⅞	19½	89	72¼	207	34	64⅞	59	23¾	12
80A119R64	106¼	80	131¼	7	132	60½	50	61½	67	72½	14	47⅞	19½	82	72¼	212	34	64⅞	59	23¾	12



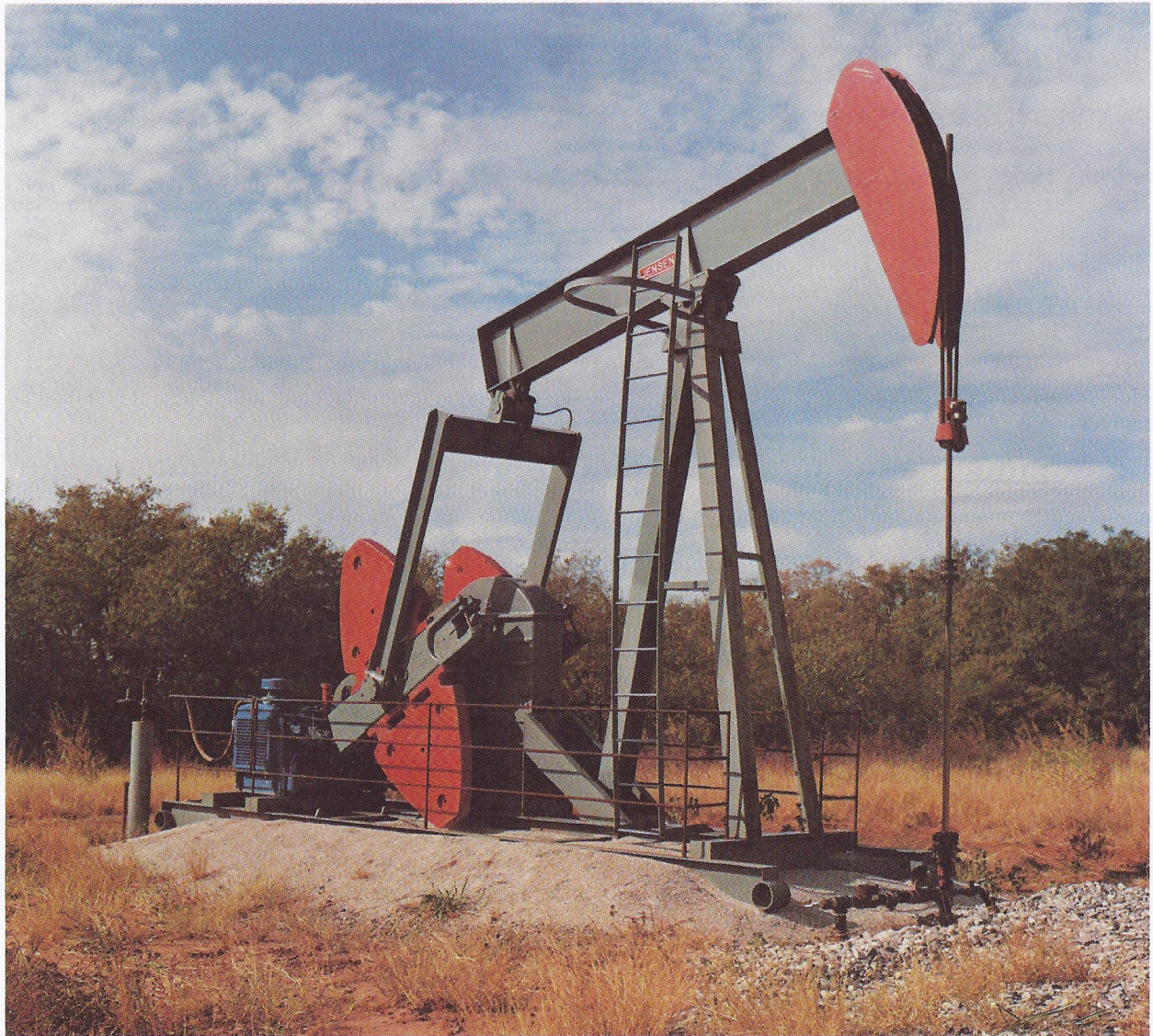


JENSEN

Since 1919

Crank Balance Pumping Units

114A133R54/114A143R64/
MODELS: 114A173R64/114A143R74/
114A119R86



FEATURES:

- Cast Alloy Bearing Housing With Roller Bearings
- Easy Cable Replacement
- Wrist Pin: Heavy Duty Double Tapered Roller Bearings
- Extended Peak Torque Capacity
- Deeper Walking Beam
- Gear Reducer Has Shear Pin Type Mountings

SPECIFICATIONS

MODELS: 114A133R54/114A143R64/
114A173R64/114A143R74/
114A119R86

GEAR REDUCER

PULLEY DIAMETER	# GROOVES PULLEY	GEAR OIL	TORQUE	PULLEY SHAFT DIA.	GEAR RATIO	PEAK H.P. @ 20 SPM
23.6	4-"C"	10 GAL.	114,000	2	30.1:1	36.2

FORMULA FOR BELT LENGTH AND MOTOR PULLEY SIZE.

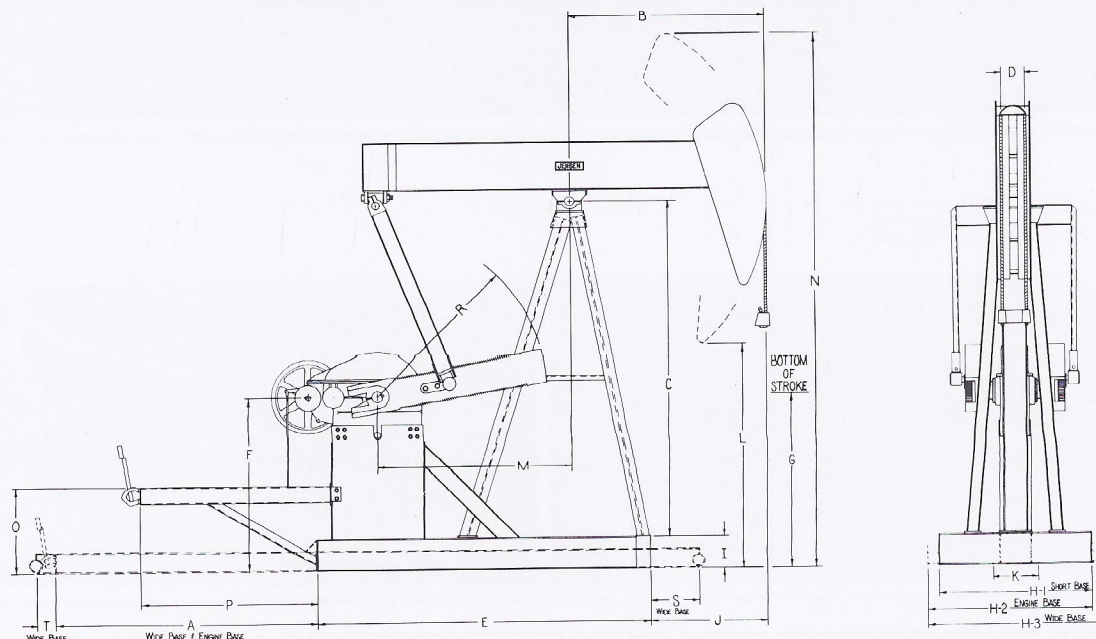
Belt Length = (Pitch Dia. Jack Pulley + Pitch Dia. Motor Pulley) × 1.57 + (2 × Center Distance).
Pitch Dia. Motor Pulley = (Pitch Dia. Jack Pulley × Gear Ratio × S.P.M.) ÷ R.P. Motor

STRUCTURE

RATING UNIT SIZE	RECOMMENDED PPRL	WALKING BEAM SIZE	POLISHED ROD STROKE	SADDLE BEARING RATED B-10 LIFE	BEAM PITMAN BEARING RATED B-10 LIFE	WRIST PIN BEARING RATED B-10 LIFE
114A133R54	13,300	W18 x 55#	54/46/37½	>100,000	>100,000	>100,000
114A143R64	14,300	W21 x 62#	64/53/42	>100,000	>100,000	>100,000
114A173R64	17,300	W21 x 68#	64/53/42	60,000	96,000	>100,000
114A143R74	14,300	W24 x 76#	74/61/48	80,000	>100,000	>100,000
114A119R86	11,900	W24 x 76#	86/71/56	>100,000	>100,000	>100,000

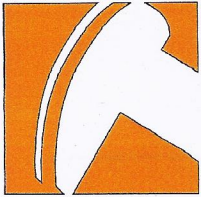
GENERAL DIMENSIONS

UNIT SIZE	A	B	C	D	E	F	G	H ₁	H ₂	H ₃	I	J	K	L	M	N	O	P	R	S	T
114A133R54	106¼	72	131¼	7	132	60½	60	61½	67	72½	14	39⅞	19½	89	72¼	207	34	64⅞	59	23¾	12
114A143R64	106¼	80	131¼	7	137	60½	50	61½	67	72½	14	47⅞	19½	82	77¼	212	34	64⅞	58½	20¾	10
114A173R64	112¼	80	153⅞	7	143	77	72	61½	67	72½	14	42⅞	19½	102	77¼	235	40	80⅞	74	20¾	12
114A143R74	112¼	96	153⅞	8¼	143	77	60	61½	67	72½	14	58⅞	19½	93	77¼	244	40	80⅞	74	20¾	12
114A119R86	112¼	111	153⅞	8¼	143	77	40	61½	67	72½	14	73⅞	19½	82	77¼	253	40	80⅞	74	20¾	12



Specifications and Prices subject to change without notice.

"Products Serving the World into the 21st Century"



JENSEN
a division of Jensen International

"J" SERIES PUMPING UNITS

BEAM BALANCED

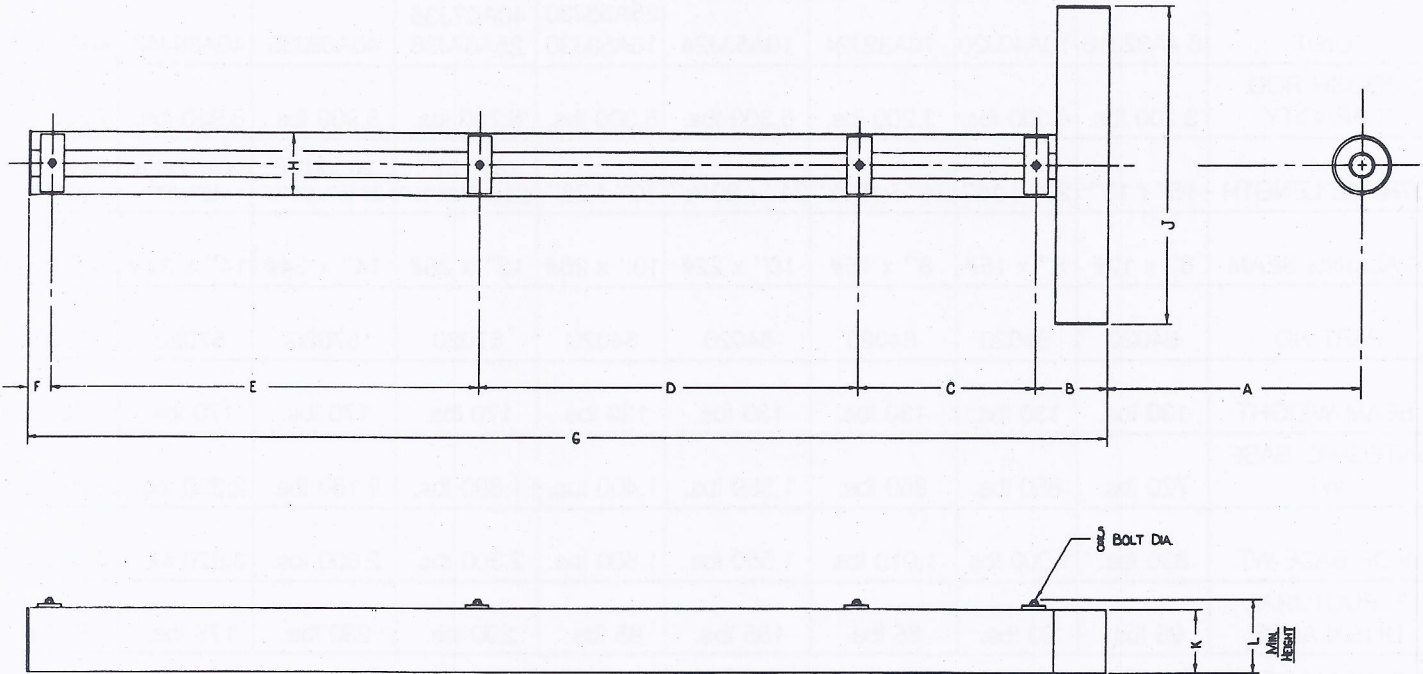
UNIT	6.4A32J16	10A40J20	10A32J24	16A53J24	25A53J30 16A53J30	40A67J36 25A67J36	40A89J36	40A89J42	40A76J48
POLISH ROD CAPACITY	3,200 lbs.	4,000 lbs.	3,200 lbs.	5,300 lbs.	5,300 lbs.	6,700 lbs.	8,900 lbs.	8,900 lbs.	7,600 lbs.
STROKE LENGTH	16" / 13"	20" / 16"	24" / 19½"	24" / 20½"	30" / 26"	36"/31" 28¼"/24¾"	36"/31½" 28¾"/24½"	34¾"/30½" 42"/37"	39¾"/35" 48"/42"
WALKING BEAM	6" x 12#	8" x 15#	8" x 15#	10" x 22#	10" x 26#	12" x 26#	14" x 34#	14" x 34#	14" x 34#
PART NO.	64020	64020	64020	64020	64020	57020	57020	57020	57020
BEAM WEIGHT	130 lbs.	130 lbs.	130 lbs.	130 lbs.	130 lbs.	170 lbs.	170 lbs.	170 lbs.	170 lbs.
INTEGRAL BASE WT	720 lbs.	850 lbs.	860 lbs.	1,350 lbs.	1,400 lbs.	1,890 lbs.	2,180 lbs.	2,200 lbs.	2,260 lbs.
WIDE BASE WT.	830 lbs.	1,000 lbs.	1,010 lbs.	1,550 lbs.	1,600 lbs.	2,300 lbs.	2,600 lbs.	2,620 lbs.	2,680 lbs.
STRUCTURAL UNBALANCE	95 lbs.	90 lbs.	65 lbs.	135 lbs.	95 lbs.	200 lbs.	230 lbs.	175 lbs.	70 lbs.

NO. BEAM WEIGHTS

EFFECTIVE COUNTERBALANCE AT POLISH ROD POUNDS

0	130	120	95	170	150	250	275	225	135
1	410	380	320	490	355	620	690	570	430
2	685	640	540	810	575	985	1080	905	725
3	955	890	755	1120	790	1345	1465	1235	1010
4	1215	1135	960	1430	1000	1700	1845	1560	1300
5	1470	1375	1165	1730	1210	2050	2220	1880	1580
6	1715	1610	1370	2030	1420	2400	2590	2200	1860
7	1955	1840	1565	2330	1620	2740	2960	2510	2080
8	2185	2060	1755	2620	1820	3080	3320	2820	2400
9	2410	2280	1940	2910	2010	3410	3675	3125	2670
10		2490	2120	3190	2200	3740	4025	3425	2930
11		2700	2295	3470	2390	4060	4370	3720	3190
12		2895	2470	3740	2575	4380	4710	4010	3445
13		3090		4010	2755	4690	5045	4300	3700
14					2930	5000	5375	4580	3945
15					3105	5250	5700	4860	4190
16					3270		6020	5130	4430
17					3440		6340	5400	4665
18					3600		6650	5665	4900
19					3760		6950	5930	5130
20					3915			6185	5575
21					4065			6440	5795
22								6690	
23									

“J” SERIES BOLT SETTINGS



UNIT	A	B	C	D	E	F	G	H	J	K	L
6.4A32J16	11 ³ / ₄	9	14	25	35	2 ¹¹ / ₁₆	85 ¹¹ / ₁₆	6 ¹ / ₂	29	4	5 ¹ / ₄
10A40J20	18	9	16 ³ / ₈	29 ¹ / ₄	31 ¹ / ₁₆	3	88 ¹¹ / ₁₆	6 ¹ / ₂	29	5	6 ¹ / ₄
10A32J24	22 ⁷ / ₈	9	16 ³ / ₈	29 ¹ / ₄	31 ¹ / ₁₆	3	88 ¹¹ / ₁₆	6 ¹ / ₂	29	5	6 ¹ / ₄
16A53J24	22 ¹ / ₄	9	29 ⁷ / ₈	35 ¹ / ₂	36 ⁵ / ₈	3	114	8 ¹ / ₂	39	6	7 ¹ / ₄
16A53J30	31 ¹ / ₄	9	29 ⁷ / ₈	35 ¹ / ₂	36 ⁵ / ₈	3	114	8 ¹ / ₂	39	6	7 ¹ / ₄
25A53J30	31 ¹ / ₄	9	29 ⁷ / ₈	35 ¹ / ₂	36 ⁵ / ₈	3	114	8 ¹ / ₂	39	6	7 ¹ / ₄
25A67J36	30 ³ / ₄	9	28 ¹ / ₄	39 ¹ / ₈	51 ⁷ / ₈	3	131 ¹ / ₄	8 ¹ / ₂	39	6	7 ¹ / ₄
40A89J36	31 ¹ / ₂	9	22	47	53	3	134	7 ³ / ₄	40	8	9 ¹ / ₄
40A67J36	30 ³ / ₄	9	28 ¹ / ₄	39 ¹ / ₈	51 ⁷ / ₈	3	131 ¹ / ₄	8 ¹ / ₂	39	6	7 ¹ / ₄
40A89J42	38 ³ / ₄	9	22	47	53	3	134	7 ³ / ₄	40	8	9 ¹ / ₄
40A76J48	45 ³ / ₄	9	22	47	53	3	134	7 ³ / ₄	40	8	9 ¹ / ₄

JENSEN / 14TH & PACIFIC STREETS / COFFEYVILLE, KANSAS 67337 / (620) 251-5700

National Watts - 800-331-2662



Since 1919

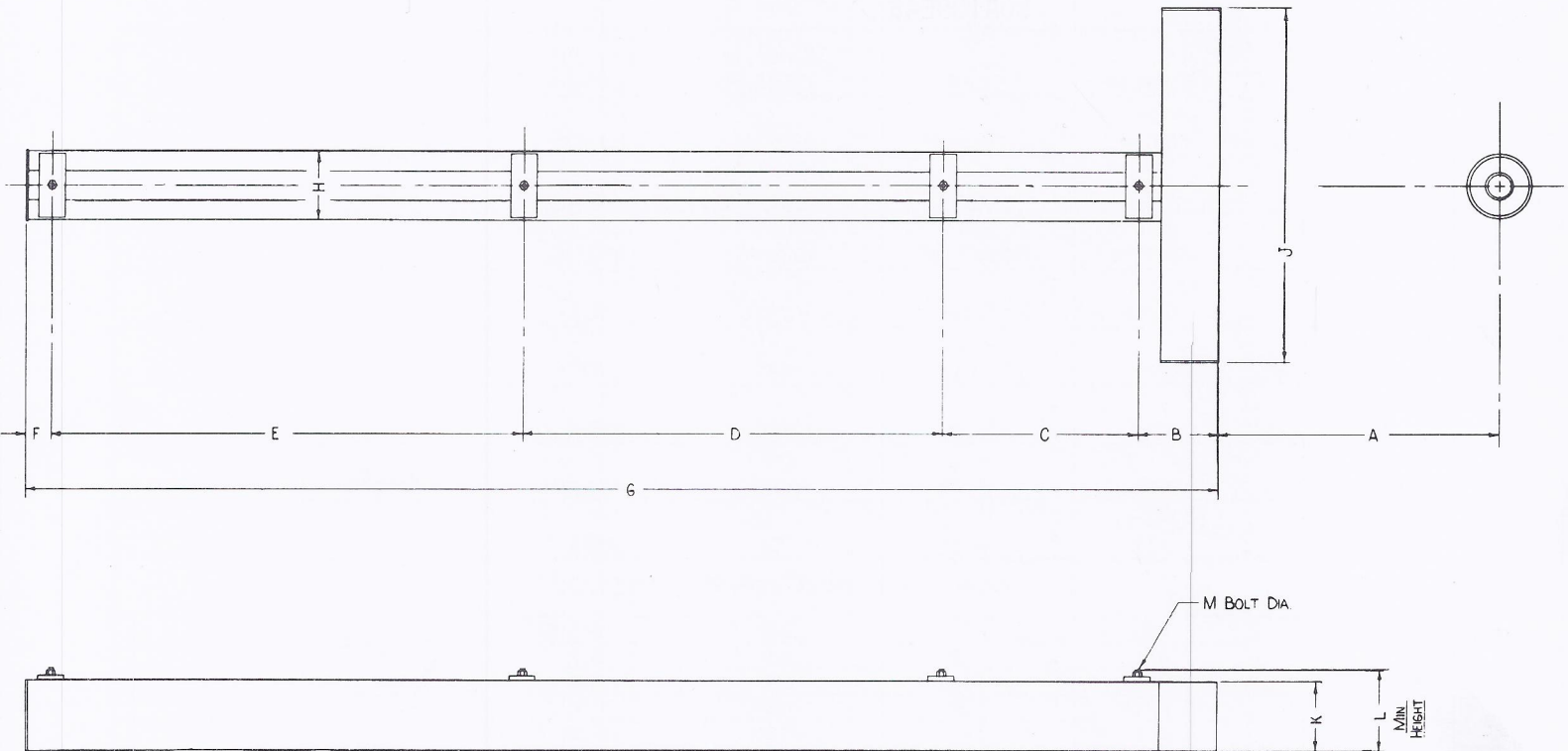
SUPER "E" SERIES BOLT SETTINGS

BEAM BALANCED

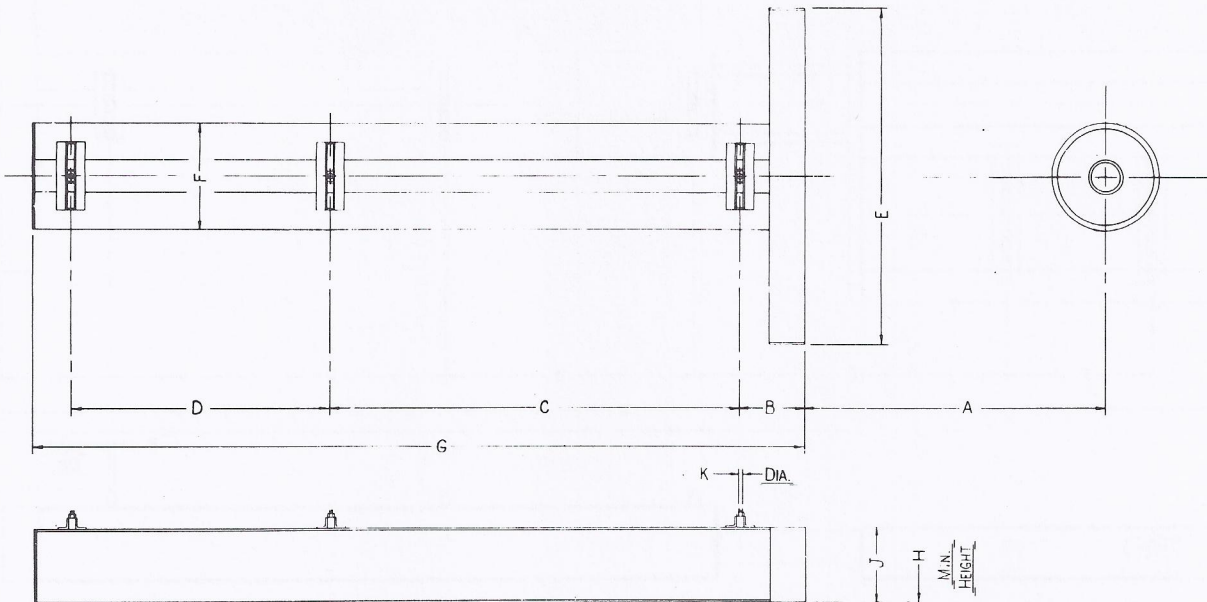
80B109E48

UNIT	57B76E54	57B109E48	40B76E48	40B89E42	40B89E36	25B67E36
POLISH ROD CAPACITY	7,600 lbs.	10,900 lbs.	7,600 lbs.	8,900 lbs.	8,900 lbs.	6,700 lbs.
STROKE LENGTH IN INCHES	54/50½	48/45	48/44	42/38	36/33	36/33½
WALKING BEAM WT.	16x40 lbs.	16x45 lbs.	16x40 lbs.	16x40 lbs.	14x34 lbs.	14x30 lbs.
PART NO.	57020	57020	57020	57020	57020	57020
BEAM WEIGHT IN LBS.	170	170	170	170	170	170
INTEGRAL BASE WT.	4350	4300	2600	2540	2510	2,180
WIDE BASE WT.	5650	5600	3380	3,320	3,290	2,510
STRUCTURAL UNBALANCE	480	490	230	250	290	345
NO. BEAM WEIGHTS	EFFECTIVE COUNTERBALANCE AT POLISH ROD POUNDS					
0	610	630	300	315	340	280
1	979	1008	570	610	680	610
2	1347	1342	835	905	1020	940
3	1711	1666	1100	1195	1360	1270
4	2072	2041	1360	1480	1700	1600
5	2430	2386	1620	1765	2030	1920
6	2785	2727	1875	2045	2360	2230
7	3137	3065	2130	2320	2680	2540
8	3486	3399	2380	2595	3000	2850
9	3832	3730	2625	2865	3320	3160
10	4175	4058	2870	3130	3630	3460
11	4516	4388	3110	3395	3940	3760
12	4853	4704	3345	3655	4240	4050
13	5187	5022	3580	3910	4540	4340
14	5519	5337	3815	4165	4840	4630
15	5847	5648	4040	4400	5130	4910
16		5956	4265	4660	5420	5190
17		6260	4490	4900	5700	
18		6562	4710	5140	5990	
19		6860	4925	5380	6260	
20		7154	5140	5610	6540	
21		7446	5350	5840	6810	
22		7734	5560	6065		
23		8019	5765	6290		
24		8300		6510		
25				6723		
26						
27						
28						

SUPER "E" SERIES BOLT SETTINGS



UNIT	A	B	C	D	E	F	G	H	J	K	L	M
25B67E36	34	9	29 ¹ / ₂	41 ¹ / ₄	42 ¹ / ₄	3	125	9 ⁷ / ₈	34 ¹ / ₂	6	9	7 ⁷ / ₈
40B89E36	31 ¹ / ₂	9	48	47	40	3	147	13	51	12	15	7 ⁷ / ₈
40B89E42	40 ³ / ₄	9	48	47	40	3	147	13	51	12	15	7 ⁷ / ₈
40B76E48	49 ¹ / ₂	9	48	47	40	3	147	13	51	12	15	7 ⁷ / ₈
57B109E48	35 ¹ / ₂	24	51	38	80	2 ³ / ₄	195 ³ / ₄	15 ¹ / ₂	52 ¹ / ₂	12	15	7 ⁷ / ₈
57B76E54	43 ¹ / ₂	24	51	38	80	2 ³ / ₄	195 ³ / ₄	15 ¹ / ₂	52 ¹ / ₂	12	15	7 ⁷ / ₈



CRANK BALANCED SHORT BASE HI COMPACT TIE DOWN SETTING

UNIT SIZE	A	B	C	D	E	F	G	H	J	K
57A109R48C	34 3/4"	20"	54"	37"	52 1/2"	15 1/2"	115 1/2"	15 1/2"	12"	7/8"
57A76R54C	42 3/4"	20"	54"	37"	52 1/2"	15 1/2"	115 1/2"	15 1/2"	12"	7/8"
80A133R48C	31 5/8"	20"	62"	46"	61 1/2"	19 1/2"	132"	17 1/2"	14"	1"
80A133R54C	39 5/8"	20"	62"	46"	61 1/2"	19 1/2"	132"	17 1/2"	14"	1"
80A119R64C	47 5/8"	20"	62"	46"	61 1/2"	19 1/2"	132"	17 1/2"	14"	1"
114A133R54C	39 5/8"	20"	62"	46"	61 1/2"	19 1/2"	132"	17 1/2"	14"	1"
114A143R64C	47 5/8"	20"	62"	46"	61 1/2"	19 1/2"	132"	17 1/2"	14"	1"
114A173R64C	42 5/8"	20"	72"	46"	61 1/2"	19 1/2"	143"	17 1/2"	14"	1"
114A143R74C	58 5/8"	20"	72"	46"	61 1/2"	19 1/2"	143"	17 1/2"	14"	1"
114A119R86C	73 5/8"	20"	72"	46"	61 1/2"	19 1/2"	143"	17 1/2"	14"	1"
160A173R64C	42 5/8"	20"	69"	53"	74 1/2"	22 1/4"	146"	19"	14"	1 1/8"
160A143R74C	58 5/8"	20"	69"	53"	74 1/2"	22 1/4"	146"	19"	14"	1 1/8"
160A200R74C	57 1/2"	20"	83"	58"	78 1/4"	22 1/4"	164 1/4"	21"	16"	1 1/8"
160A173R86C	72 1/2"	20"	83"	58"	78 1/4"	22 1/4"	164 1/4"	21"	16"	1 1/8"
228A200R74C	57 1/2"	20"	83"	58"	72"	22 1/4"	164 1/4"	21"	16"	1 1/4"
228A213R86C	72 1/2"	20"	83"	58"	72"	22 1/4"	164 1/4"	21"	16"	1 1/4"
228A246R86C	56 3/8"	20"	117"	46"	75"	22 3/8"	190 7/16"	21"	16"	1 1/4"
228A173R100C	90 1/2"	20"	83"	58"	72"	22 1/4"	164 1/4"	21"	16"	1 1/4"
228A213R120C	99 3/8"	20"	117"	46"	75"	22 3/8"	190 7/16"	21"	16"	1 1/4"
320A246R86C	56 5/8"	20"	117"	46"	75"	28 1/8"	190 7/16"	22"	16"	1 1/4"
320A256R100C	74 3/8"	20"	117"	46"	75"	28 3/8"	190 7/16"	22"	16"	1 1/4"
320A305R100C	74 5/8"	20"	117"	46"	75"	28 1/8"	190 7/16"	22"	16"	1 1/4"
320A213R120C	99 5/8"	20"	117"	46"	75"	28 1/8"	190 7/16"	22"	16"	1 1/4"
320A256R120C	99 5/8"	20"	117"	46"	75"	28 1/8"	190 7/16"	22"	16"	1 1/4"

SUBJECT TO CHANGE WITHOUT NOTICE

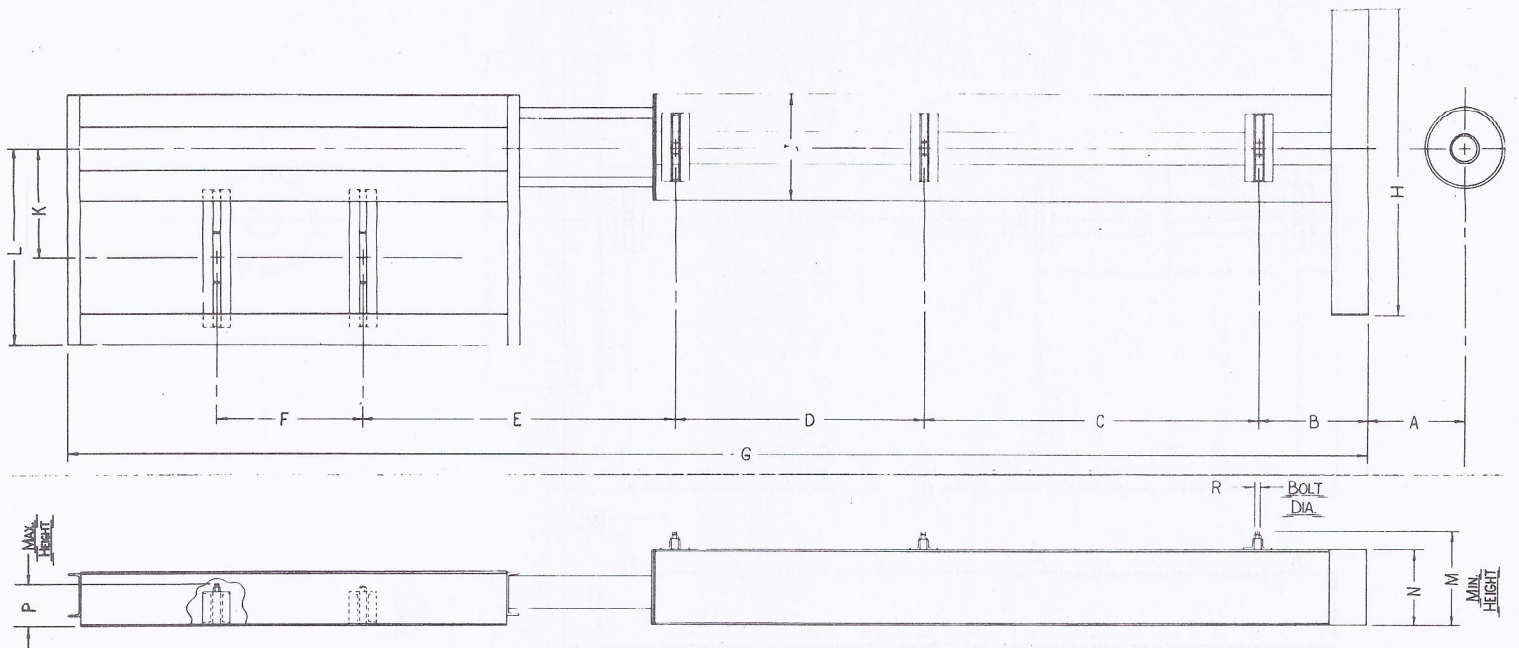
JENSEN BROS. MFG. CO., INC.

14TH & PACIFIC STREETS
(316) 251-5700

BOX 477

COFFEYVILLE, KANSAS 67337

11/15/84



CRANK BALANCE SHORT BASE GROUND LEVEL TIE DOWN SETTING

UNIT SIZE	A	B	C	D	E	F	G	H	J	K	L	M	N	P	R
57A109R48E	34 3/4	20	54	37	52	24	213 1/4	52 1/2	15 1/2	17	30	15 1/2	12	7	7/8
57A76R54E	42 3/4	20	54	37	52	24	213 1/4	52 1/2	15 1/2	17	30	15 1/2	12	7	7/8
80A133R48E	31 5/8	20	62	46	58	28	240 1/4	61 1/2	19 1/2	20	36 1/4	17 1/2	14	8 1/2	1
80A133R54E	39 5/8	20	62	46	58	28	240 1/4	61 1/2	19 1/2	20	36 1/4	17 1/2	14	8 1/2	1
80A119R64E	47 5/8	20	62	46	58	28	240 1/4	61 1/2	19 1/2	20	36 1/4	17 1/2	14	8 1/2	1
114A133R54E	39 5/8	20	62	46	58	28	240 1/4	61 1/2	19 1/2	20	36 1/4	17 1/2	14	8 1/2	1
114A143R64E	47 5/8	20	62	46	58	28	240 1/4	61 1/2	19 1/2	20	36 1/4	17 1/2	14	8 1/2	1
114A173R64E	42 5/8	20	72	46	63	28	257 1/4	61 1/2	19 1/2	20	36 1/4	17 1/2	14	8 1/2	1
114A143R74E	58 5/8	20	72	46	63	28	251 1/4	61 1/2	19 1/2	20	36 1/4	17 1/2	14	8 1/2	1
114A119R86E	73 5/8	20	72	46	63	28	257 1/4	61 1/2	19 1/2	20	36 1/4	17 1/2	14	8 1/2	1
160A173R64E	42 5/8	20	69	53				69	22 1/4			19	14	8 1/2	1 1/8
160A143R74E	58 5/8	20	69	53				69	22 1/4			19	14	8 1/2	1 1/8
160A200R74E	57 1/2	20	83	58	72	31 1/2	296	72	22 1/4	23 1/2	42 1/4	21	16	8 1/2	1 1/8
160A173R80E	72 1/2	20	83	58	72	31 1/2	296	72	22 1/4	23 1/2	42 1/4	21	16	8 1/2	1 1/8
228A200R74E	57 1/2	20	83	58	72	31 1/2	296	72	22 1/4	23 1/2	42 1/4	21	16	8 1/2	1 1/4
228A213R86E	72 1/2	20	83	58	72	31 1/2	296	72	22 1/4	23 1/2	42 1/4	21	16	8 1/2	1 1/4
228A246R86E	56 3/8	20	117	46	50	31 1/2	327 1/2	75	22 3/8	24 1/4	43 3/4	21	16	8 1/2	1 1/4
228A173R100E	90 1/2	20	83	58	72	31 1/2	296	72	22 1/4	23 1/2	42 1/4	21	16	8 1/2	1 1/4
228A213R120E	99 3/8	20	117	46	50	31 1/2	327 1/2	75	22 3/8	24 1/4	43 3/4	21	16	8 1/2	1 1/4
320A246R86E	56 5/8	20	117	46	87	31 1/2	332 1/16	75	28 1/8	24 1/4	43 3/4	22	16	8 1/2	1 1/4
320A256R100E	74 5/8	20	117	46	87	31 1/2	332 7/16	75	28 1/8	24 1/4	43 3/4	22	16	8 1/2	1 1/4
320A305R100E	74 5/8	20	117	46	87	31 1/2	332 7/16	75	28 1/8	24 1/4	43 3/4	22	16	8 1/2	1 1/4
320A213R120E	99 5/8	20	117	46	87	31 1/2	332 7/16	75	28 1/8	24 1/4	43 3/4	22	16	8 1/2	1 1/4
320A256R120E	99 5/8	20	117	46	87	31 1/2	332 7/16	75	28 1/8	24 1/4	43 3/4	22	16	8 1/2	1 1/4

SUBJECT TO CHANGE WITHOUT NOTICE

JENSEN BROS. MFG. CO., INC.

14TH & PACIFIC STREETS
(316) 251-5700

BOX 477

COFFEYVILLE, KANSAS 67337
11/15/84

ROTARY PUMPING UNIT COUNTER BALANCE CHART

UNIT	228A213R120 320A213R120 320A256R120	320A256R100 320A305R100	228A246R86 320A246R86	228A173R100	160A173R86 228A213R86	160A200R74 228A200R74	114A119R86	114A143R74 160A143R74	114A173R64 160A173R64	114A143R64 80A119R64	80A133R54 114A133R54	80A133R48	57A109R48	57A76R54
UNBALANCED LOAD	-945	+200	+350	-1100	-150	150	-500	-250	+200	+80	+130	+370	+150	+60
CRANKS ONLY	3620	5180	6300	3400	4300	5500	2620	3400	4450	2190	2690	3230	2400	2020
2-57 MASTERS 700 LBS. Assy. #57239F	4575	6140	7540	4180	5300	6500	3540	4480	5590	3010	3630	4310	3280	2900
4-57 MASTERS 1400 LBS. Assy. #57239	5530	7100	8780	4960	6300	7500	4460	5560	6730	3830	4570	5390	4160	3780
4-57 MASTERS 2-57 LEAF 2110 LBS. Assy. #57239A	6490	8260	9900	5820	7200	8620	5360	6680	8050	4670	5610	6510	5060	4620
4-57 MASTERS 4-57 LEAFS 2820 LBS. Assy. #57239B	7440	9420	11020	6680	8100	9740	6260	7800	9370	5510	6650	7630	5960	5460
2-14 MASTERS 1260 LBS. Assy. #57239G	5230	6940	8940	4840	6020	7300	4230	5200	6570	3610	4400	5130	3980	3540
4-14 MASTERS 2520 LBS. Assy. #57239C	6850	8700	11580	6280	7740	9100	5840	7000	8690	5030	6100	7030	5560	5060
4-14 MASTERS 2-14 LEAFS 3550 LBS. Assy. #57239D	8170	10220	13140	7360	9120	10,700	7090	8540	10470	6210	7500	8570	6860	6160
4-14 MASTERS 4-14 LEAFS 4580 LBS. Assy. #57239E	9480	11740	14700	8440	10500	12300	8340	10080	12250	7400	8900	10110	8160	7260
2-114 MASTERS 1800 LBS. Assy. #114239G	5860	7860	9410	5440	6620	8020	4840	5980	7460	4340	5200			
4-114 MASTERS 3600 LBS. Assy. #114239H	8102	10540	12520	7480	8940	10540	7080	8540	10470	6480	7720			
4-114 MASTERS 2-114 LEAFS 5400 LBS. Assy. #114239I	10340	13210	15630	9620	11220	13060	9310	11130	13480	8630	10230			
4-114 MASTERS 4-114 LEAFS 7200 LBS. Assy. #114239J	12590	15890	18740	11760	13500	15580	11550	13710	16490	10780	12740			
2-22 MASTERS 2800 LBS. Assy. #114239F	6960	9185	10380	6800	7980	9620	6000	7400	9150					
4-22 MASTERS 5600 LBS. Assy. #114239	10310	13190	14460	10200	11660	13740	9380	11400	13850					
4-22 MASTERS 2-22 LEAFS 7860 LBS. Assy. #114239A	13010	16430	18530	13000	14980	17420								
4-22 MASTERS & LEAFS Assy. #114239B	15712	19670			18300									
2-320 MASTERS 3460 LBS. Assy. #320239C	7750	10130												
4-320 MASTERS 6920 LBS. Assy. #320239	11890	15090												
4-320 MASTERS 2-320 LEAFS 10040 LBS Assy. #320239A	15620	19550												
4-320 MASTERS & LEAFS Assy. #320239B	19340	24020												
13,160 LBS.														



14th And Pacific Streets • Coffeyville, Kansas 67337
Phone In Kansas: 1-800-362-0751 • All Other States: 1-800-331-2662