

Quality and Service Through People
and Precision Engineering



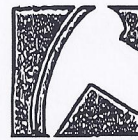
Oilfield Products Group

National Watts 800-331-2662

14TH & PACIFIC STREETS

COFFEYVILLE, KS 67337

Since 1919



JENSEN

A DIVISION OF
JENSEN INTERNATIONAL, INC.

JUNE 1997
JENSEN LOW PROFILE PUMPING UNIT

STROKE ADJUSTMENTS: Model 25 or 40A67L24

Crank in bottom hole; Beam in forward hole	24"
Crank in bottom hole; Beam in back hole	20.31"
Crank in top hole; Beam in forward hole	15.70"
Crank in top hole; Beam in back hole	13.49"

STROKE ADJUSTMENTS: Model 25 or 40A67L30

Crank in bottom hole; Beam in forward hole	30"
Crank in bottom hole; Beam in back hole	23.90"
Crank in top hole; Beam in forward hole	19.47"
Crank in top hole; Beam in back hole	15.82"

Model 25/40A67L24 EFFECTIVE COUNTERBALANCE

Structural Unbalance 200 lbs.

No. Beam Weights	Effective Counterbalance at Polished rod Pounds
------------------	--

0-----	250
1-----	550
2-----	870
3-----	1190
4-----	1500
5-----	1790
6-----	2080
7-----	2390
8-----	2690
9-----	2990
10-----	3300
11-----	3610
12-----	3910
13-----	4210
14-----	4520
15-----	4820
16-----	5130

P.O. BOX 1509 ■ COFFEYVILLE, KANSAS 67337 ■ PHONE (316) 251-5700 ■ FAX 316-251-3622
 E-MAIL general@jensen-products.com ■ WEB SITE www.jensen-products.com

"Products Serving the World Into the 21st Century"



JENSEN

Since 1919

"J" SERIES PUMPING UNITS

MODEL 6.4A32J16



FEATURES:

- Cast Alloy Bearings.
- Easy Cable Replacement.
- Wrist Pin: Double Ball Bearing Self Aligning.
- Deeper Horse Head.
- Deeper Walking Beam.
- Gear Reducer Has Shear Pin Type Mountings.

SPECIFICATIONS

MODEL 6.4A32J16

GEAR REDUCER

PULLEY DIAMETER	#GROOVES PULLEY	GEAR OIL	TORQUE	PULLEY SHAFT DIA. PULLEY	GEAR RATIO
18	2-B	4 Qts.	6,400" #	1"	30.9:1

FORMULA FOR BELT LENGTH AND MOTOR PULLEY SIZE.

Belt Length = (Pitch Dia. Jack Pulley + Pitch Dia. Motor Pulley) X 1.57 + (2 X Center Distance).

Pitch Dia. Motor Pulley = (Pitch Dia. Jack Pulley X Gear Ratio X S.P.M.) ÷ R.P. Motor.

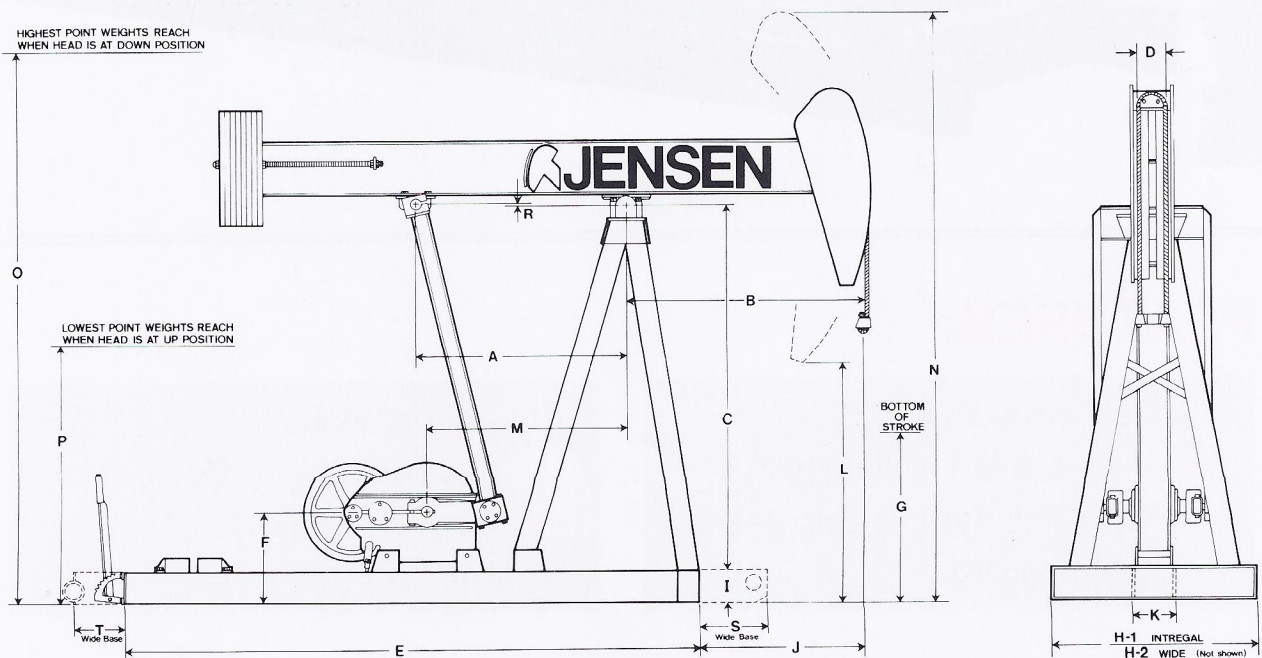
Center distance for electric motors and small single cylinder gas engines is 16".

STRUCTURE

RATING UNIT SIZE	RECOMMENDED PPRL	WALKING BEAM SIZE	POLISHED ROD STROKE	SADDLE BEARING RATED CAPACITY	BEAM PITMAN RATED CAPACITY CALCULATED LOAD	WRIST PIN BEARING RATED B-10 LIFE	COUNTER BALANCE BEAM WT.	HORSEPOWER	
								MPRL	PPRL
6.4A32J16	3,200#	6 x 12#	16/13"	18,380#	11,250#	250,000 Hrs.	130#	.7	2.4

GENERAL DIMENSIONS

UNIT SIZE	A	B	C	D	E	F	G	H ₁	H ₂	I	J	K	L	M	N	O	P	R	S	T
6.4A32J16	26 ¹ / ₄	22 ³ / ₄	46	4 ³ / ₈	85 ¹¹ / ₁₆	13 ¹ / ₂	26	29	32 ¹ / ₄	4	11 ³ / ₄	6 ¹ / ₂	33 ¹ / ₂	26	67 ¹ / ₂	79 ³ / ₄	27 ¹ / ₄	- ¹ / ₄	9	7 ⁵ / ₁₆



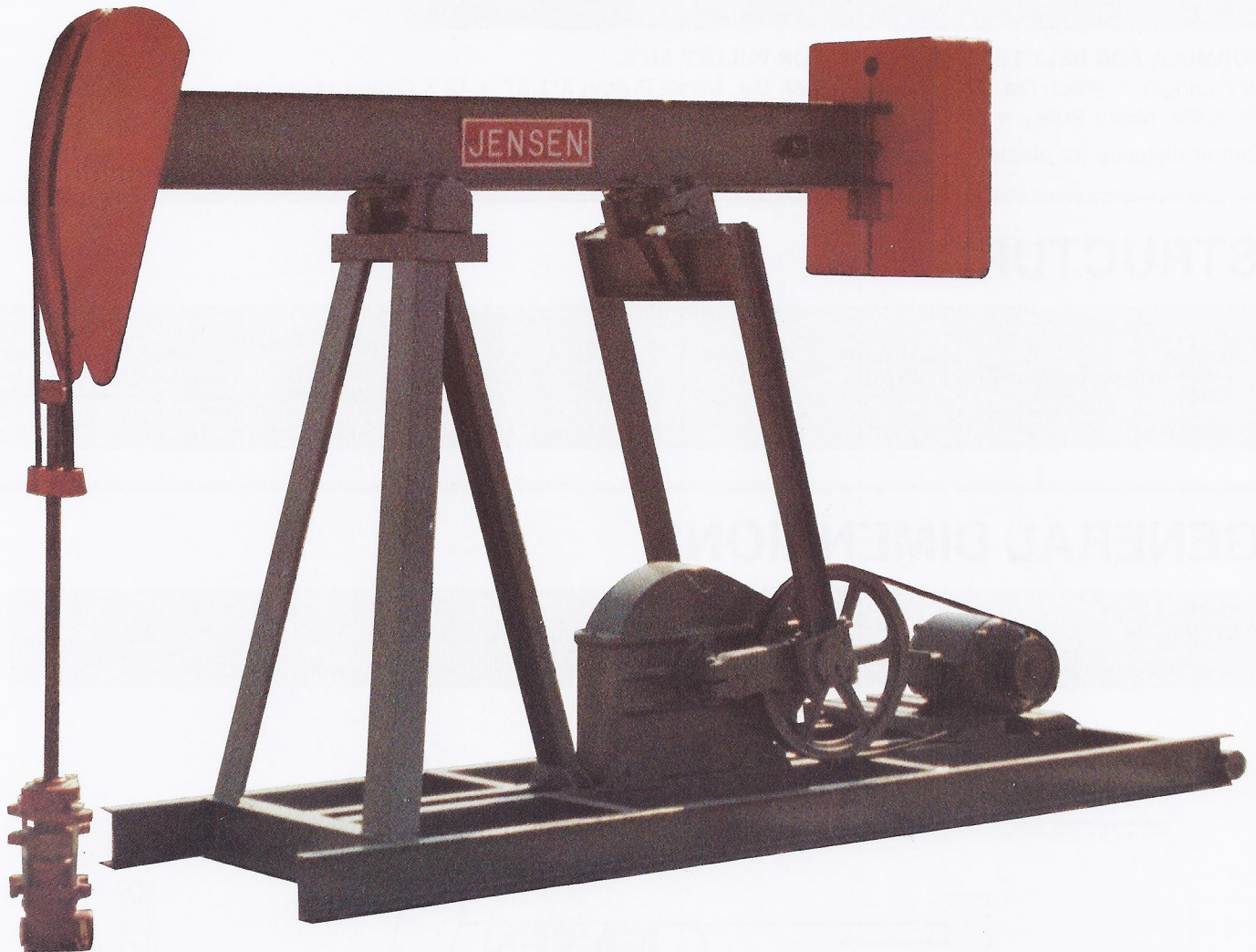


JENSEN

Since 1919

“J” SERIES PUMPING UNITS

MODEL 6.4A32J16



FEATURES:

- Cast Alloy Bearings.
- Easy Cable Replacement.
- Wrist Pin: Double Ball Bearing Self Aligning.
- Deeper Horse Head.
- Deeper Walking Beam.
- Gear Reducer Has Shear Pin Type Mountings.

SPECIFICATIONS

MODEL 6.4A32J16

GEAR REDUCER

PULLEY DIAMETER	#GROOVES PULLEY	GEAR OIL	TORQUE	PULLEY SHAFT DIA. PULLEY	GEAR RATIO
18	2-B	4 Qts.	6,400" #	1"	30.9:1

FORMULA FOR BELT LENGTH AND MOTOR PULLEY SIZE.

Belt Length = (Pitch Dia. Jack Pulley + Pitch Dia. Motor Pulley) X 1.57 + (2 X Center Distance).

Pitch Dia. Motor Pulley = (Pitch Dia. Jack Pulley X Gear Ratio X S.P.M.) ÷ R.P. Motor.

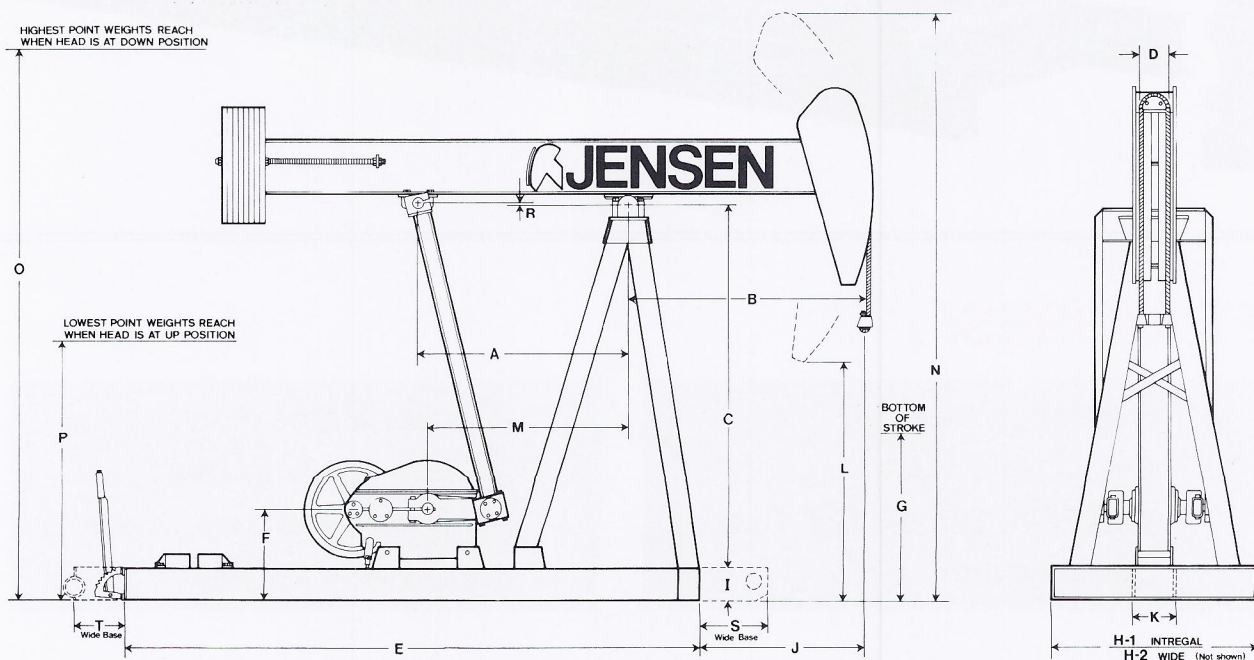
Center distance for electric motors and small single cylinder gas engines is 16".

STRUCTURE

RATING UNIT SIZE	RECOMMENDED PPRL	WALKING BEAM SIZE	POLISHED ROD STROKE	SADDLE BEARING RATED CAPACITY	BEAM PITMAN RATED CAPACITY CALCULATED LOAD	WRIST PIN BEARING RATED B-10 LIFE	COUNTER BALANCE BEAM WT.	HORSEPOWER	
								MPRL	PPRL
6.4A32J16	3,200#	6 x 12#	16/13"	18,380#	11,250#	250,000 Hrs.	130#	.7	2.4

GENERAL DIMENSIONS

UNIT SIZE	A	B	C	D	E	F	G	H ₁	H ₂	I	J	K	L	M	N	O	P	R	S	T
6.4A32J16	26 ¹ / ₄	22 ³ / ₄	46	4 ³ / ₈	85 ¹ / ₁₆	13 ¹ / ₂	26	29	32 ¹ / ₄	4	11 ³ / ₄	6 ¹ / ₂	33 ¹ / ₂	26	67 ¹ / ₂	79 ³ / ₄	27 ¹ / ₄	- ¹ / ₄	9	7 ⁵ / ₁₆



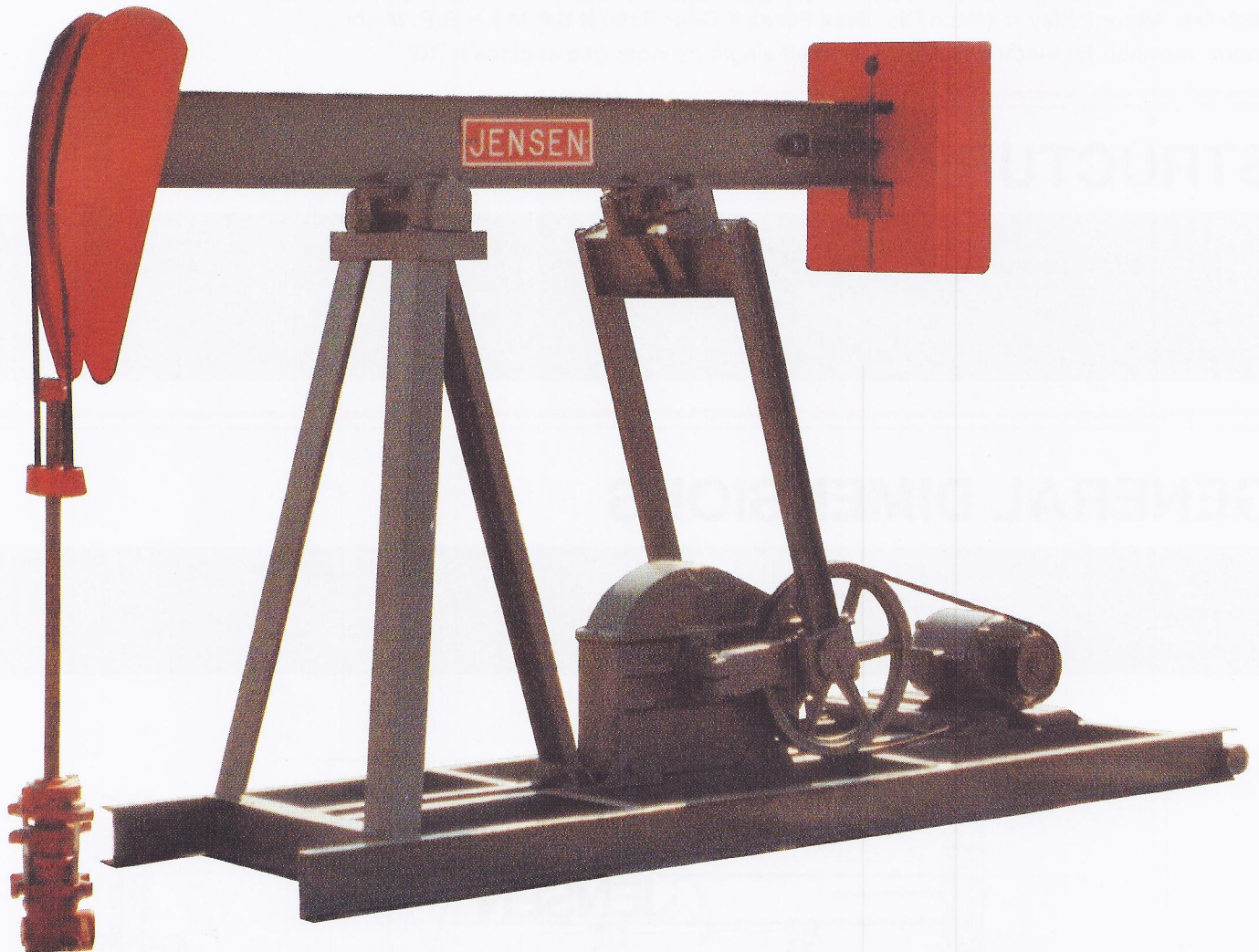


JENSEN

Since 1919

“J” SERIES PUMPING UNITS

MODELS: 10A40J20 / 10A32J24



FEATURES:

- Cast Alloy Bearings.
- Easy Cable Replacement.
- Wrist Pin: Double Ball Bearing Self Aligning.
- Deeper Horse Head.
- Deeper Walking Beam.
- Gear Reducer Has Shear Pin Type Mountings.

SPECIFICATIONS

MODELS: 10A40J20 / 10A32J24

GEAR REDUCER

PULLEY DIAMETER	#GROOVES PULLEY	GEAR OIL	TORQUE	PULLEY SHAFT DIA. PULLEY	GEAR RATIO
18"	2-B	7 Qts.	10,000"#	1"	29.6:1

FORMULA FOR BELT LENGTH AND MOTOR PULLEY SIZE.

Belt Length = (Pitch Dia. Jack Pulley + Pitch Dia. Motor Pulley) X 1.57 + (2 X Center Distance).

Pitch Dia. Motor Pulley = (Pitch Dia. Jack Pulley X Gear Ratio X S.P.M.) ÷ R.P. Motor

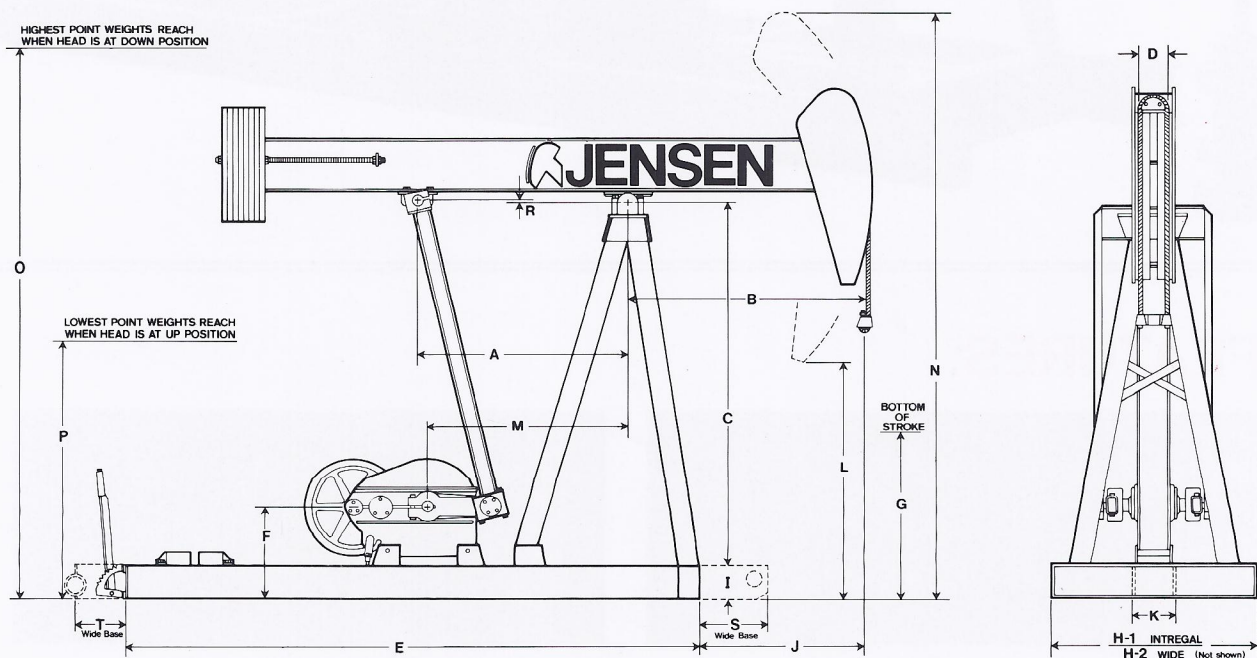
Center distance for electric motors and small single cylinder gas engines is 16"

STRUCTURE

RATING UNIT SIZE	RECOMMENDED PPRL	WALKING BEAM SIZE	POLISHED ROD STROKE	SADDLE BEARING RATED CAPACITY	BEAM PITMAN BEARING RATED CAPACITY	WRIST PIN BEARING RATED B-10 LIFE	COUNTER BALANCE BEAM WT.	HORSEPOWER	
								MPRL	PPRL
10A40J20	4,000#	8" x 15#	20/16"	14,630#	7,660#	>100,000 Hrs.	130#	1.0	3.2
10A32J24	3,200#	8" x 15#	24/19 1/2"	14,630#	7,660#	>100,000 Hrs.	130#	1.0	3.2

GENERAL DIMENSIONS

UNIT SIZE	A	B	C	D	E	F	G	H ₁	H ₂	I	J	K	L	M	N	O	P	R	S	T
10A40J20	26 1/4	29 3/8	50 15/16	4 3/8	88 11/16	14 9/16	27 1/2	29	32 1/2	5	18	6 1/2	35 1/2	29 1/8	77 1/2	90 3/4	29 1/2	-5/16	9	7 5/16
10A32J24	26 1/4	34 1/4	50 15/16	4 3/8	88 11/16	14 9/16	22	29	32 1/2	5	22 7/8	6 1/2	32	29 1/8	81	91 1/2	29 1/2	-5/16	9	7 5/16



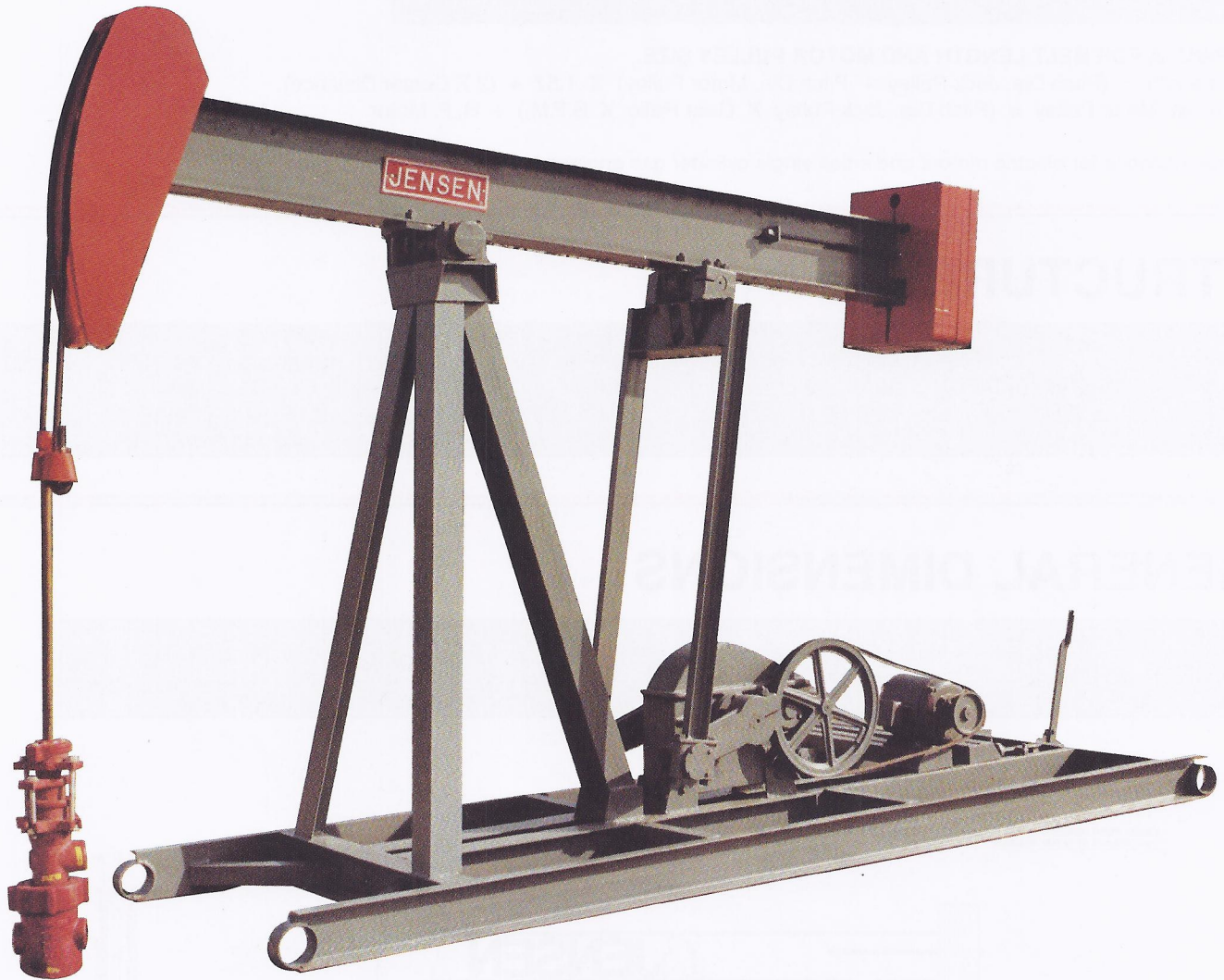


JENSEN

Since 1919

“J” SERIES PUMPING UNITS

MODEL: 16A53J30



FEATURES:

- Cast Alloy Bearings.
- Easy Cable Replacement.
- Wrist Pin: Double Ball Bearing Self Aligning.
- Deeper Horse Head.
- Deeper Walking Beam.
- Gear Reducer Has Shear Pin Type Mountings.

SPECIFICATIONS

MODEL: 16A53J30

GEAR REDUCER

PULLEY DIAMETER	# GROOVES PULLEY	GEAR OIL	TORQUE	PULLEY SHAFT DIA. PULLEY	GEAR RATIO
18"	2-B	7 Qts.	16,000"#	1"	29.6:1

FORMULA FOR BELT LENGTH AND MOTOR PULLEY SIZE.

Belt Length = (Pitch Dia. Jack Pulley + Pitch Dia. Motor Pulley) X 1.57 + (2 X Center Distance).

Pitch Dia. Motor Pulley = (Pitch Dia. Jack Pulley X Gear Ratio X S.P.M.) ÷ R. P. Motor

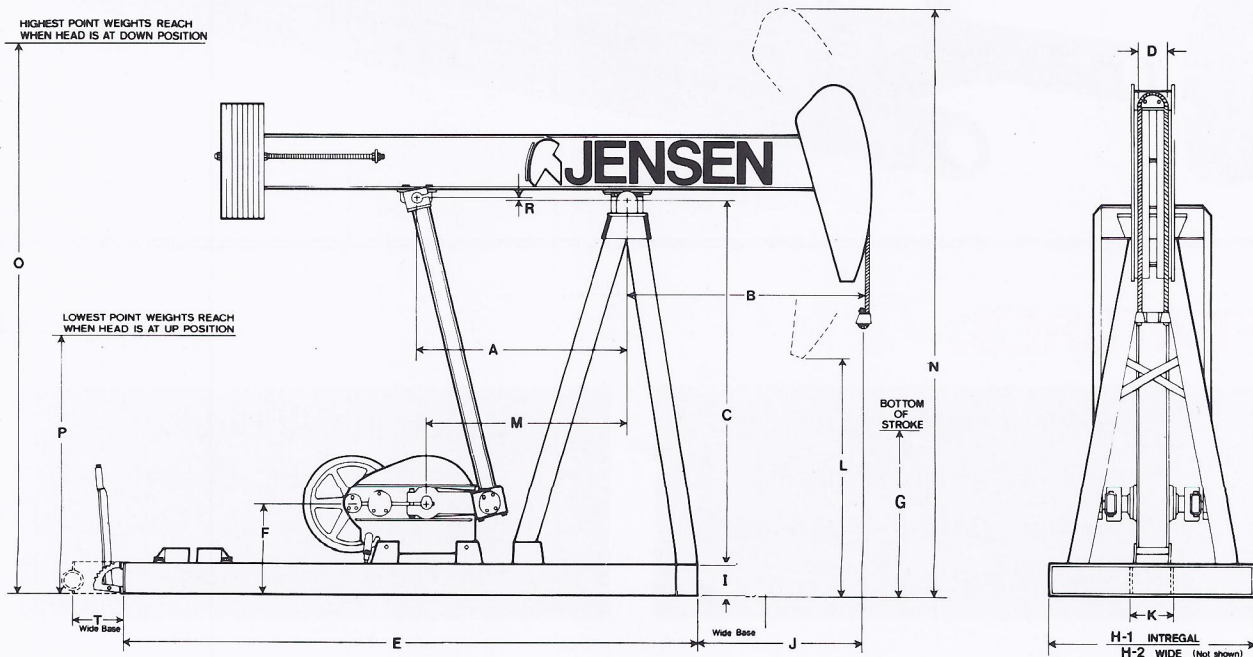
Center distance for electric motors and small single cylinder gas engines is 21½".

STRUCTURE

RATING UNIT SIZE	RECOMMENDED PPRL	WALKING BEAM SIZE	POLISHED ROD STROKE	SADDLE BEARING RATED CAPACITY	BEAM PITMAN RATED CAPACITY CALCULATED LOAD	WRIST PIN BEARING RATED B-10 LIFE	COUNTER BALANCE BEAM WT.	HORSEPOWER	
								MPRL	PPRL
16A53J30	5,300#	10" X 26#	30/26"	18,380#	11,250#	92,000 Hrs.	130#	1.60	5.0

GENERAL DIMENSIONS

UNIT SIZE	A	B	C	D	E	F	G	H ₁	H ₂	I	J	K	L	M	N	O	P	R	T
16A53J30	36 5/8	45	70	6	114	17 5/16	30	39	43	6	31 1/4	8 1/2	46 1/2	38 1/4	108	118 1/2	46 1/2	1/2	7 1/4



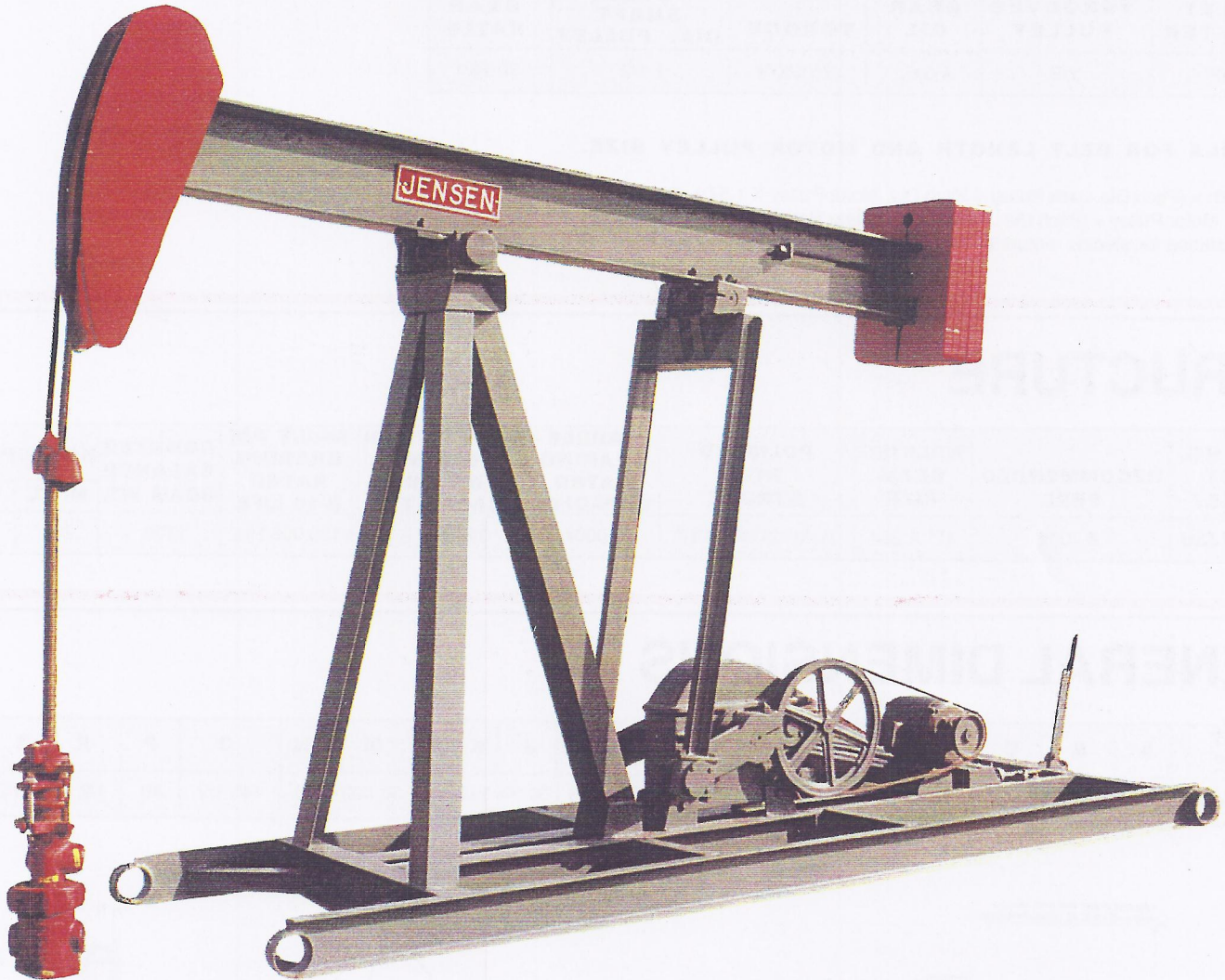


JENSEN

Since 1919

"J" SERIES PUMPING UNITS

MODELS: 25A67J36



FEATURES:

- Cast Alloy Bearings.
- Easy Cable Replacement.
- Wrist Pin: Double Ball Bearing Self Aligning.
- Deeper Horse Head.
- Deeper Walking Beam.
- Gear Reducer Has Shear Pin Type Mountings.

SPECIFICATIONS

MODELS: 25A67J36

GEAR REDUCER

PULLEY DIAMETER	#GROOVES PULLEY	GEAR OIL	TORQUE	PULLEY SHAFT DIA. PULLEY	GEAR RATIO
22 1/2"	2-B	4 Gal.	25,000"#	1 1/2"	30.76:1

FORMULA FOR BELT LENGTH AND MOTOR PULLEY SIZE.

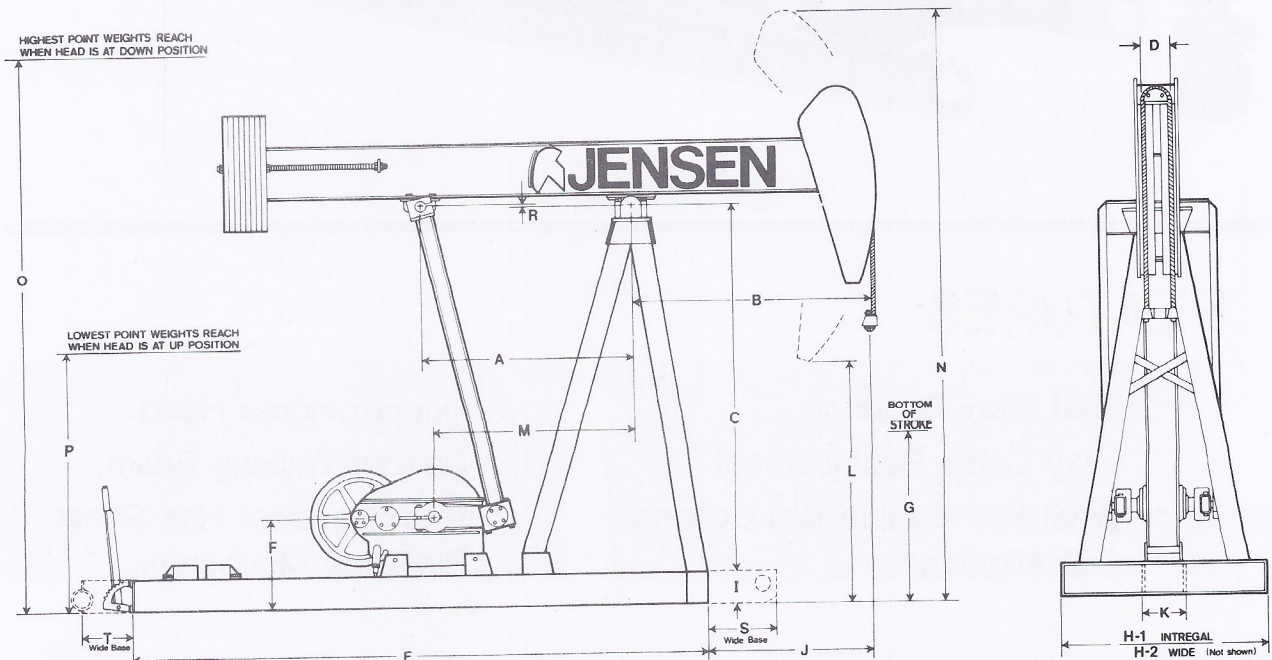
Belt Length = (Pitch Dia. Jack Pulley + Pitch Dia. Motor Pulley X 1.57 + (2 X Center Distance).
 Pitch Dia. Motor Pulley = (Pitch Dia. Jack Pulley X Gear Ratio X S.P.M.) ÷ R.P. Motor
 Center distance for electric motors and small single cylinder gas engines is 20 1/8"

STRUCTURE

RATING UNIT SIZE	RECOMMENDED PPRL	WALKING BEAM SIZE	POLISHED ROD STROKE	SADDLE BEARING RATED CAPACITY	BEAM PITMAN BEARING RATED CAPACITY	WRIST PIN BEARING RATED B-10 LIFE	COUNTER BALANCE BEAM WT.	HORSEPOWER	
								MPRL	PPRL
25A67J36	6,700#	12" X 26#	36 / 31" 28 1/4" / 24 3/4"	30,000#	11,250#	>100,000 Hrs.	170#	2.8	9.6

GENERAL DIMENSIONS

UNIT SIZE	A	B	C	D	E	F	G	H ₁	H ₂	I	J	K	L	M	N	O	P	R	S	T
25A67J36	38	44 1/2	78	6	129 5/8	20 9/16	32	39	43	6	30 3/4	8 1/2	50	38 1/32	121	140 1/2	40	1/2	13 1/2	8 3/8





JENSEN

a division of Jensen International

“J” SERIES PUMPING UNITS

MODELS: 40A76J48 / 40A89J36 / 40A89J42



FEATURES:

- Cast Alloy Bearings.
- Easy Cable Replacement
- Wrist Pin: Double Ball Bearing Self Aligning.

- Deeper Horse Head.
- Deeper Walking Beam.
- Gear Reducer Has Shear Pin Type Mountings

SPECIFICATIONS

MODELS: 40A76J48 / 40A89J36 / 40A89J42

GEAR REDUCER

PULLEY DIAMETER	#GROOVES PULLEY	GEAR OIL	TORQUE	PULLEY SHAFT DIA. PULLEY	GEAR RATIO
22 1/2"	3-B	4 Gal.	40,000"#	1 1/2"	30.76:1

FORMULA FOR BELT LENGTH AND MOTOR PULLEY SIZE.

Belt Length = (Pitch Dia. Jack Pulley + Pitch Dia. Motor Pulley) X 1.57 + (2 X Center Distance).

Pitch Dia. Motor Pulley = (Pitch Dia. Jack Pulley X Gear Ratio X S.P.M.) ÷ R.P. Motor

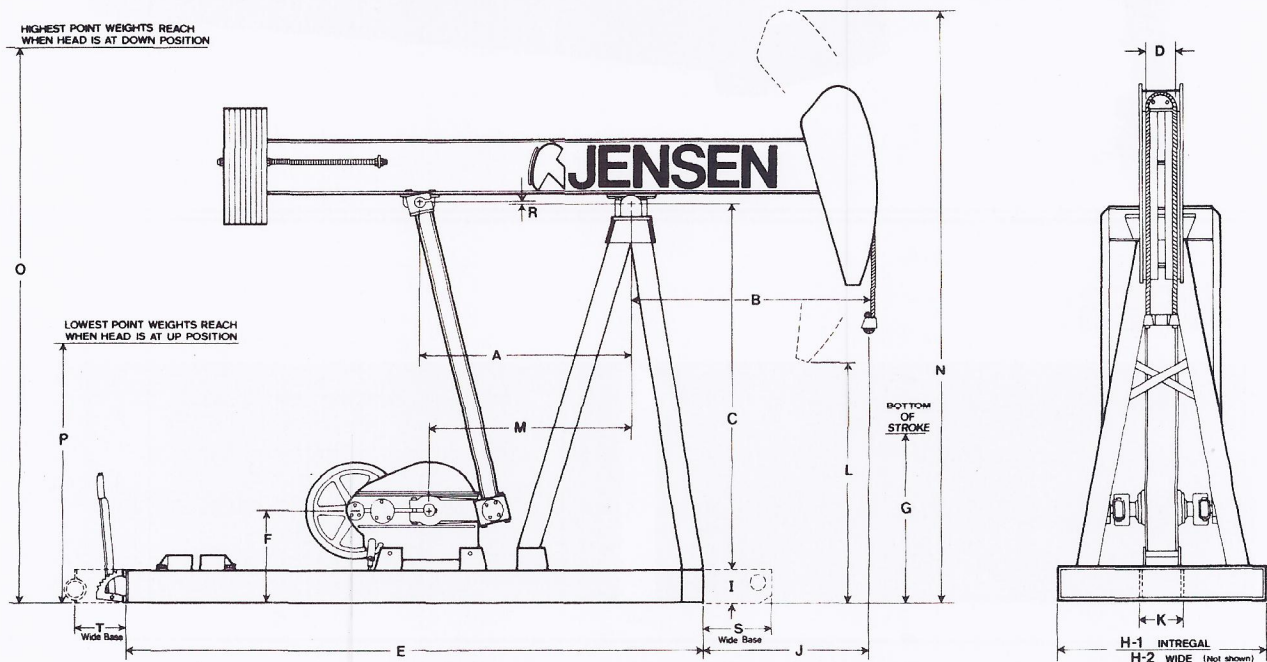
Center distance for electric motors and small single cylinder gas engines is 30-7/16"

STRUCTURE

RATING UNIT SIZE	RECOMMENDED PPRL	WALKING BEAM SIZE	POLISHED ROD STROKE	SADDLE BEARING RATED CAPACITY	BEAM PITMAN RATED CAPACITY CALCULATED LOAD	WRIST PIN BEARING RATED B-10 LIFE	COUNTER BALANCE BEAM WT.	HORSEPOWER	
								MPRL	PPRL
40A89J36	8,900#	14" X 34#	36 / 31 1/2" 28 3/4 / 24 1/2"	30,000#	11,250#	45,000 Hrs.	170#	4.2	12.7
40A89J42	8,900#	14" X 34#	42 / 37" 34 3/4 / 30 1/2"	30,000#	11,250#	45,000 Hrs.	170#	4.2	12.7
40A76J48	7,600#	14" X 34#	48 / 42" 39 3/4 / 35"	30,000#	11,250#	45,000 Hrs.	170#	4.2	12.7

GENERAL DIMENSIONS

UNIT SIZE	A	B	C	D	E	F	G	H ₁	H ₂	I	J	K	L	M	N	O	P	R	S	T
40A89J42	44	50	84	6	133 3/4	24	37 1/2	40	44 1/2	8	38 3/4	7 3/4	51 1/2	44 1/32	134 1/2	153	47	- 1/2	12 1/4	8
40A89J36	44	42 3/4	84	6	133 3/4	24	43	40	44 1/2	8	31 1/2	7 3/4	58	44 1/32	128	152	47	- 1/2	12 1/4	8
40A76J48	44	57	84	6	133 3/4	24	32	40	44 1/2	8	45 3/4	7 3/4	46 1/2	44 1/32	140	152	47 1/2	- 1/2	12 1/4	8



Specification and Prices subject to change without notice.



JENSEN

Since 1919

SUPER "E" SERIES PUMPING UNITS

MODELS: 57B109E48/57B76E54



FEATURES:

- Cast Alloy Bearings
- Easy Cable Replacement
- Wrist Pin: Heavy Duty Double Tapered Roller Bearings
- Extended Peak Torque Capacity
- Deeper Walking Beam
- Gear Reducer Has Shear Pin Type Mountings

SPECIFICATIONS

MODELS: 57B109E48/57B76E54

GEAR REDUCER

PULLEY DIAMETER	#GROOVES PULLEY	GEAR OIL	TORQUE	PULLEY SHAFT DIA. PULLEY	GEAR RATIO
22½"	4-B	30 Qts.	57,000"#	1¾"	30.4:1

FORMULA FOR BELT LENGTH AND MOTOR PULLEY SIZE.

Belt Length = (Pitch Dia. Jack Pulley + Pitch Dia. Motor Pulley) × 1.57 + (2 × Center Distance).

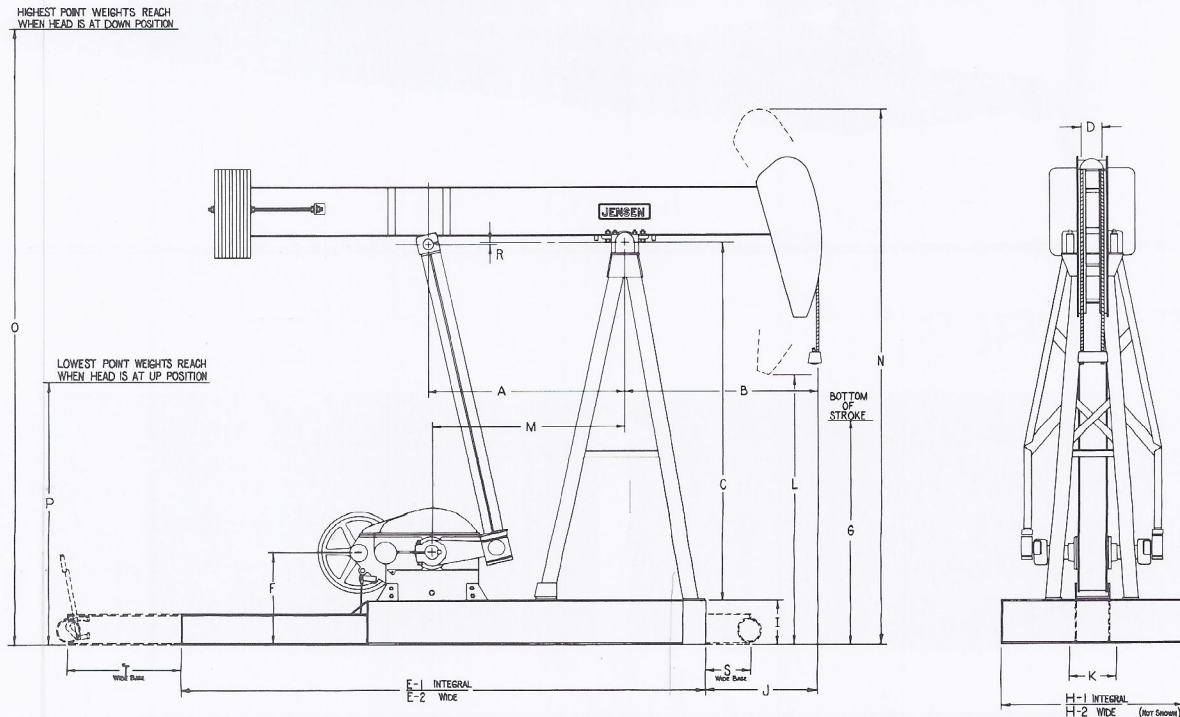
Pitch Dia. Motor Pulley = (Pitch Dia. Jack Pulley × Gear Ratio × S.P.M.) ÷ R.P. Motor

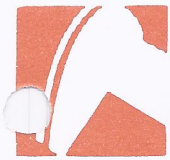
STRUCTURE

RATING UNIT SIZE	RECOMMENDED PPRL	WALKING BEAM SIZE	POLISHED ROD STROKE	SADDLE BEARING RATED CAPACITY	BEAM PITMAN BEARING RATED CAPACITY	WRIST PIN BEARING RATED B-10 LIFE	COUNTER BALANCE BEAM WT.	HORSEPOWER	
								MPRL	PPRL
57B109E48	10,900#	16" × 45#	48/44¼	50,000#	24,470#	54,000 Hrs.	170#	6.1	15.6
57B76E54	7,600#	16" × 40#	54/49¾	50,000#	24,470#	54,000 Hrs.	170#	6.1	15.6

GENERAL DIMENSIONS

UNIT SIZE	A	B	C	D	E	F	G	H ₁	H ₂	I	J	K	L	M	N	O	P	R	S	T	U
57B109E48	65½	64	110 1/16	5¾	211¼	29½	44	52½	60	12	34¾	15½	71	64	171			1/16	18¼	10¾	115½
57B76E54	65½	72	110 1/16	5¾	211¼	29½	38	52½	60	12	42¾	15½	64	64	177			1/16	18¼	10¾	115½





JENSEN

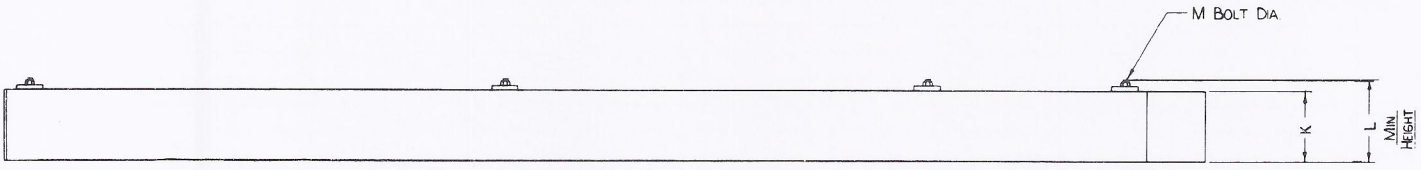
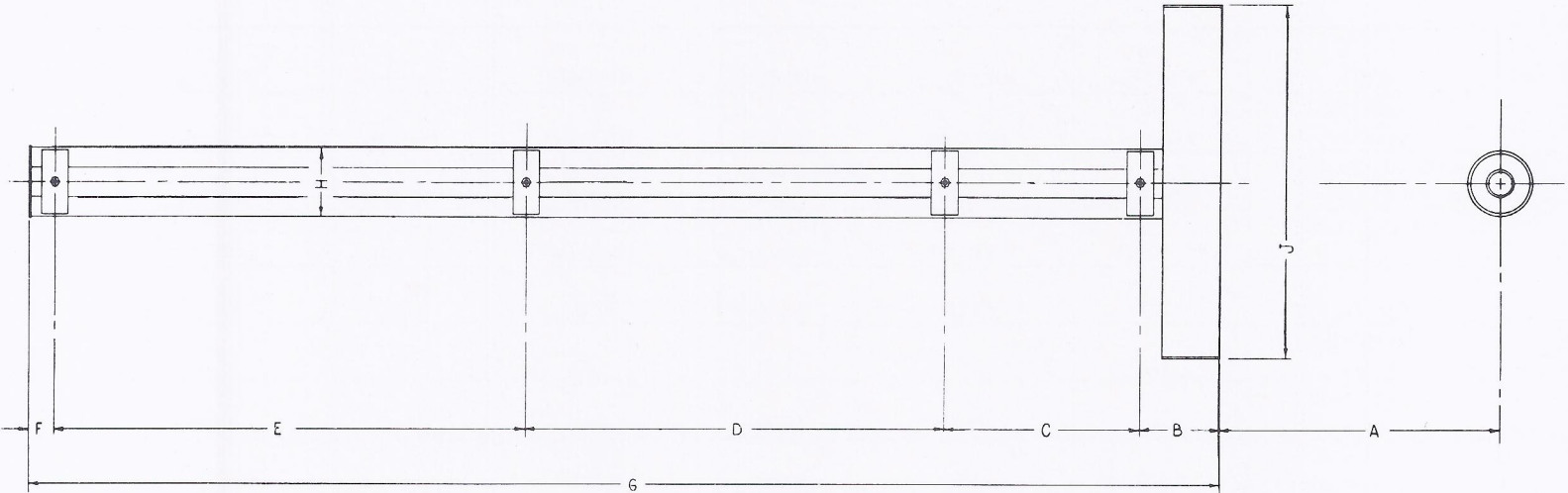
Since 1919

SUPER "E" SERIES BOLT SETTINGS

BEAM BALANCED

UNIT	57B76E54	57B109E48	40B76E48	40B89E42	40B89E36	25B67E36
POLISH ROD CAPACITY	7,600 lbs.	10,900 lbs.	7,600 lbs.	8,900 lbs.	8,900 lbs.	6,700 lbs.
STROKE LENGTH IN INCHES	54/50½	48/45	48/44	42/38	36/33	36/33½
WALKING BEAM WT.	16x40 lbs.	16x45 lbs.	16x40 lbs.	16x40 lbs.	14x34 lbs.	14x30 lbs.
PART NO.	57020	57020	57020	57020	57020	57020
BEAM WEIGHT IN LBS.	170	170	170	170	170	170
INTEGRAL BASE WT.	4350	4300	2600	2540	2510	2,180
WIDE BASE WT.	5650	5600	3380	3,320	3,290	2,510
STRUCTURAL UNBALANCE	480	490	230	250	290	345
NO. BEAM WEIGHTS	EFFECTIVE COUNTERBALANCE AT POLISH ROD POUNDS					
0	610	630	300	315	340	280
1	979	1008	570	610	680	610
2	1347	1342	835	905	1020	940
3	1711	1666	1100	1195	1360	1270
4	2072	2041	1360	1480	1700	1600
5	2430	2386	1620	1765	2030	1920
6	2785	2727	1875	2045	2360	2230
7	3137	3065	2130	2320	2680	2540
8	3486	3399	2380	2595	3000	2850
9	3832	3730	2625	2865	3320	3160
10	4175	4058	2870	3130	3630	3460
11	4516	4388	3110	3395	3940	3760
12	4853	4704	3345	3655	4240	4050
13	5187	5022	3580	3910	4540	4340
14	5519	5337	3815	4165	4840	4630
15	5847	5648	4040	4100	5130	4910
16		5956	4265	4660	5420	5190
17		6260	4490	4900	5700	
18		6562	4710	5140	5990	
19		6860	4925	5380	6260	
20		7154	5140	5610	6540	
21		7446	5350	5840	6810	
22		7734	5560	6065		
23		8019	5765	6290		
24		8300		6510		
25				6723		
26						
27						
28						

SUPER "E" SERIES BOLT SETTINGS



UNIT	A	B	C	D	E	F	G	H	J	K	L	M
25B67E36	34	9	29 ¹ / ₂	41 ¹ / ₄	42 ¹ / ₄	3	125	9 ⁷ / ₈	34 ¹ / ₂	6	9	⁷ / ₈
40B89E36	31 ¹ / ₂	9	48	47	40	3	147	13	51	12	15	⁷ / ₈
40B89E42	40 ³ / ₄	9	48	47	40	3	147	13	51	12	15	⁷ / ₈
40B76E48	49 ¹ / ₂	9	48	47	40	3	147	13	51	12	15	⁷ / ₈
57B109E48	35 ¹ / ₂	24	51	38	80	2 ³ / ₄	195 ³ / ₄	15 ¹ / ₂	52 ¹ / ₂	12	15	⁷ / ₈
57B76E54	43 ¹ / ₂	24	51	38	80	2 ³ / ₄	195 ³ / ₄	15 ¹ / ₂	52 ¹ / ₂	12	15	⁷ / ₈



JENSEN

Since 1919

SUPER "E" SERIES PUMPING UNITS

MODEL: 25B67E36



FEATURES:

- Cast Alloy Bearings
- Easy Cable Replacement
- Wrist Pin: Heavy Duty Double Tapered Roller Bearings
- Extended Peak Torque Capacity
- Deeper Walking Beam
- Gear Reducer Has Shear Pin Type Mountings

SPECIFICATIONS

MODEL: 25B67E36

GEAR REDUCER

PULLEY DIAMETER	#GROOVES PULLEY	GEAR OIL	TORQUE	PULLEY SHAFT DIA. PULLEY	GEAR RATIO
22½"	2-B	16 Qts.	25,000"#	1½"	30.76:1

FORMULA FOR BELT LENGTH AND MOTOR PULLEY SIZE.

Belt Length = (Pitch Dia. Jack Pulley + Pitch Dia. Motor Pulley) × 1.57 + (2 × Center Distance).

Pitch Dia. Motor Pulley = (Pitch Dia. Jack Pulley × Gear Ratio × S.P.M.) ÷ R.P. Motor

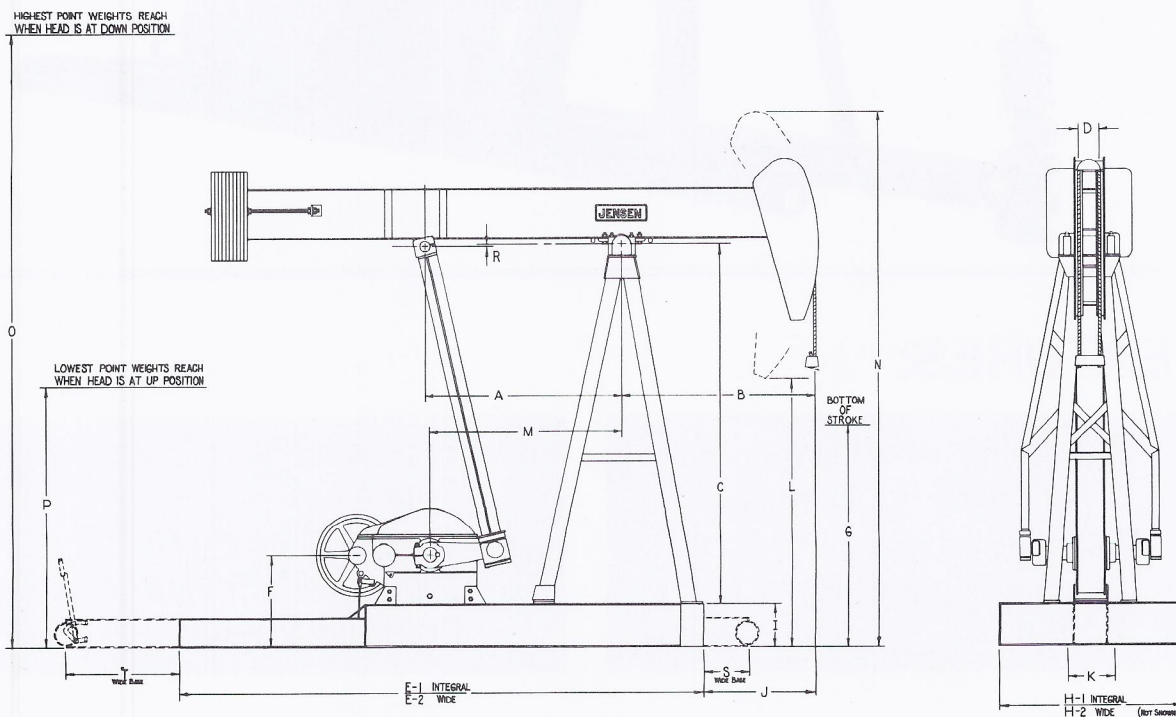
Center distance for electric motors and small single cylinder gas engines is 22¼".

STRUCTURE

RATING UNIT SIZE	RECOMMENDED PPRL	WALKING BEAM SIZE	POLISHED ROD STROKE	SADDLE BEARING RATED CAPACITY	BEAM PITMAN BEARING RATED CAPACITY	WRIST PIN BEARING RATED 8-10 LIFE	COUNTER BALANCE BEAM WT.	HORSEPOWER	
								MPRL	PPRL
25B67E36	6,700#	14"x30#	36/32½"	30,000#	15,840#	100,000 Hrs.	170#	2.8	9.6

GENERAL DIMENSIONS

UNIT SIZE	A	B	C	D	E ₁	E ₂	F	G	H ₁	H ₂	I	J	K	L	M	N	O	P	R	S	T
25B67E36	45⅝	54	87	6	125	154	20⅝	49	34½	43	6	34	9⅞	57¾	43	130	149¾	52½	⅜	20	9



Specifications and Prices subject to change without notice.



JENSEN

Since 1919

SUPER "E" SERIES PUMPING UNITS

MODELS: 40B89E36/40B89E42/40B76E48



FEATURES:

- Cast Alloy Bearings
- Easy Cable Replacement
- Wrist Pin: Heavy Duty Double Tapered Roller Bearings

- Extended Peak Torque Capacity
- Deeper Walking Beam
- Gear Reducer Has Shear Pin Type Mountings

SPECIFICATIONS

MODEL: 40B89E36/40B89E42/40B76E48

GEAR REDUCER

PULLEY DIAMETER	#GROOVES PULLEY	GEAR OIL	TORQUE	PULLEY SHAFT DIA. PULLEY	GEAR RATIO
22½"	3-B	16 Qts.	40,000"#	1½"	29.6:1

FORMULA FOR BELT LENGTH AND MOTOR PULLEY SIZE.

Belt Length = (Pitch Dia. Jack Pulley + Pitch Dia. Motor Pulley) × 1.57 + (2 × Center Distance).

Pitch Dia. Motor Pulley = (Pitch Dia. Jack Pulley × Gear Ratio × S.P.M.) ÷ R.P. Motor

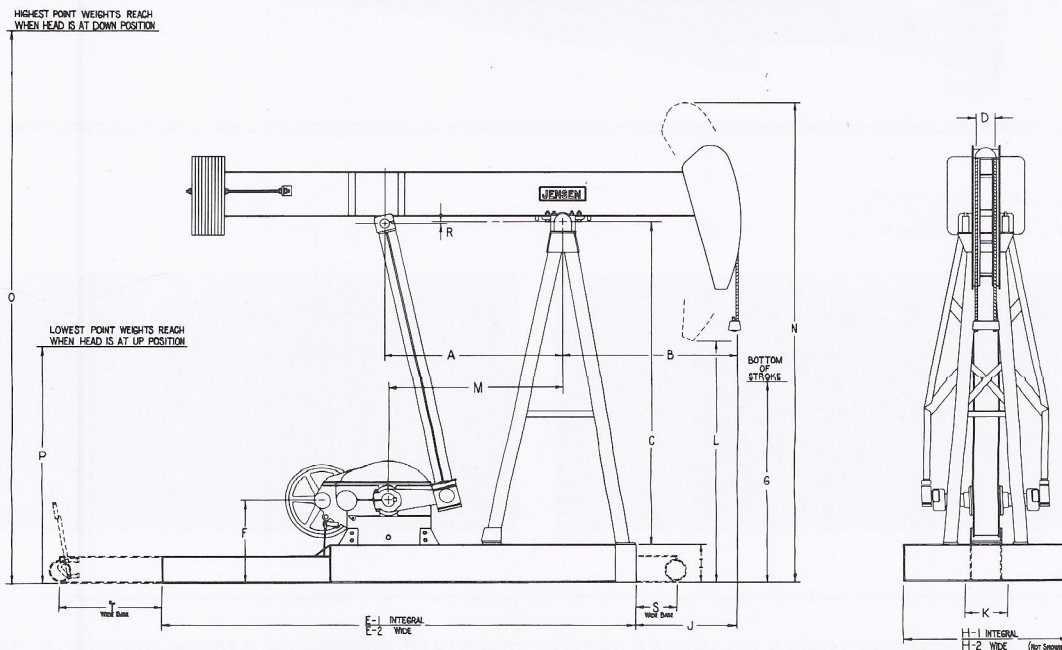
Center distance for electric motors and small single cylinder gas engines is 32¾".

STRUCTURE

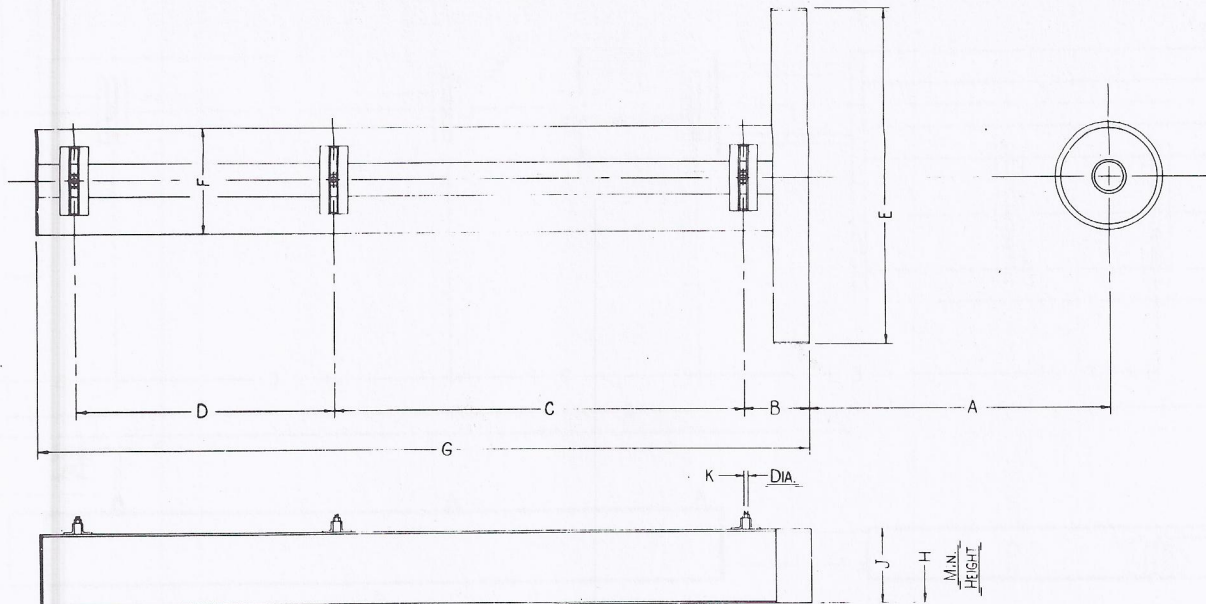
RATING UNIT SIZE	RECOMMENDED PPRL	WALKING BEAM SIZE	POLISHED ROD STROKE	SADDLE BEARING RATED CAPACITY	BEAM PITMAN BEARING RATED CAPACITY	WRIST PIN BEARING RATED B-10 LIFE	COUNTER BALANCE BEAM WT.	HORSEPOWER	
								MPRL	PPRL
40B89E36	8,900#	14"x34#	36/33"	39,000#	24,470#	100,000 Hrs.	170#	4.2	12.7
40B89E42	8,900#	16"x40#	42/38"	39,000#	24,470#	100,000 Hrs.	170#	4.2	12.7
40B76E48	7,600#	16"x40#	48/44"	39,000#	24,470#	100,000 Hrs.	170#	4.2	12.7

GENERAL DIMENSIONS

UNIT SIZE	A	B	C	D	E ₁	E ₂	F	G	H ₁	H ₂	I	J	K	L	M	N	O	P	R	S	T
40B89E36	55	54	101½	5¾	147	191	25⅞	51	51	58½	12	31½	13	75½	54	150½	172¾	73½	⅞	12¼	31¾
40B89E42	55	63	101½	5¾	147	191	25⅞	48	51	58½	12	40¾	13		54				⅞	12¼	31¾
40B76E48	55	72	101½	5¾	147	191	25⅞	45	51	58½	12		13	63¼	54	163¼	172¾	73½	⅞	12¼	31¾



Specifications and Prices subject to change without notice.



CRANK BALANCED SHORT BASE HI COMPACT TIE DOWN SETTING

UNIT SIZE	A	B	C	D	E	F	G	H	J	K
57A109R48C	34 3/4"	20"	54"	37"	52 1/2"	15 1/2"	115 1/2"	15 1/2"	12"	7/8"
57A76R54C	42 3/4"	20"	54"	37"	52 1/2"	15 1/2"	115 1/2"	15 1/2"	12"	7/8"
80A133R48C	31 5/8"	20"	62"	46"	61 1/2"	19 1/2"	132"	17 1/2"	14"	1"
80A133R54C	39 5/8"	20"	62"	46"	61 1/2"	19 1/2"	132"	17 1/2"	14"	1"
80A119R64C	47 5/8"	20"	62"	46"	61 1/2"	19 1/2"	132"	17 1/2"	14"	1"
114A133R54C	39 5/8"	20"	62"	46"	61 1/2"	19 1/2"	132"	17 1/2"	14"	1"
114A143R64C	47 5/8"	20"	62"	46"	61 1/2"	19 1/2"	132"	17 1/2"	14"	1"
114A173R64C	42 5/8"	20"	72"	46"	61 1/2"	19 1/2"	143"	17 1/2"	14"	1"
114A143R74C	58 5/8"	20"	72"	46"	61 1/2"	19 1/2"	143"	17 1/2"	14"	1"
114A119R86C	73 5/8"	20"	72"	46"	61 1/2"	19 1/2"	143"	17 1/2"	14"	1"
160A173R64C	42 5/8"	20"	69"	53"	74 1/2"	22 1/4"	146"	19"	14"	1 1/8"
160A143R74C	58 5/8"	20"	69"	53"	74 1/2"	22 1/4"	146"	19"	14"	1 1/8"
160A200R74C	57 1/2"	20"	83"	58"	78 1/4"	22 1/4"	164 1/4"	21"	16"	1 1/8"
160A173R86C	72 1/2"	20"	83"	58"	78 1/4"	22 1/4"	164 1/4"	21"	16"	1 1/8"
228A200R74C	57 1/2"	20"	83"	58"	72"	22 1/4"	164 1/4"	21"	16"	1 1/4"
228A213R86C	72 1/2"	20"	83"	58"	72"	22 1/4"	164 1/4"	21"	16"	1 1/4"
228A246R86C	56 3/8"	20"	117"	46"	75"	22 3/8"	190 7/16"	21"	16"	1 1/4"
228A173R100C	90 1/2"	20"	83"	58"	72"	22 1/4"	164 1/4"	21"	16"	1 1/4"
228A213R120C	99 3/8"	20"	117"	46"	75"	22 3/8"	190 7/16"	21"	16"	1 1/4"
320A246R86C	56 5/8"	20"	117"	46"	75"	28 1/8"	190 7/16"	22"	16"	1 1/4"
320A256R100C	74 3/8"	20"	117"	46"	75"	28 1/8"	190 7/16"	22"	16"	1 1/4"
320A305R100C	74 5/8"	20"	117"	46"	75"	28 1/8"	190 7/16"	22"	16"	1 1/4"
320A213R120C	99 5/8"	20"	117"	46"	75"	28 1/8"	190 7/16"	22"	16"	1 1/4"
320A256R120C	99 5/8"	20"	117"	46"	75"	28 1/8"	190 7/16"	22"	16"	1 1/4"

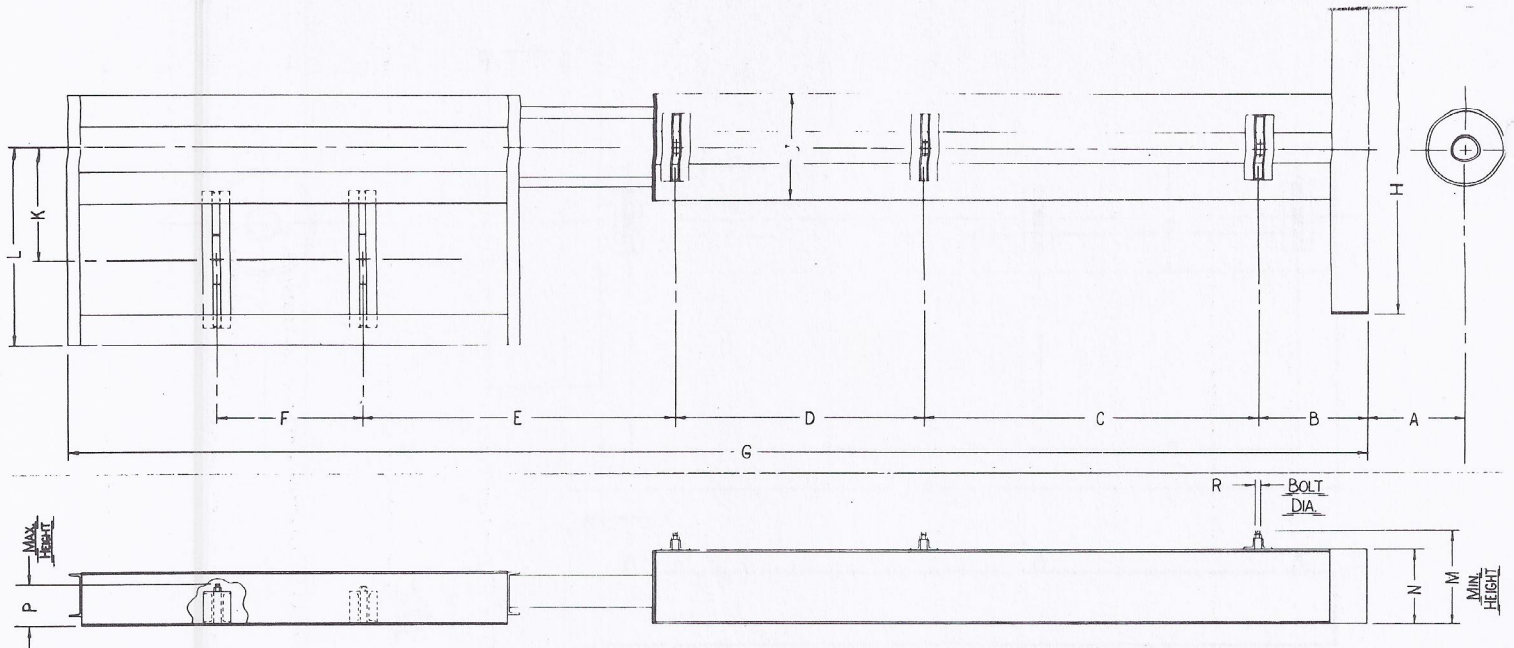
SUBJECT TO CHANGE WITHOUT NOTICE

JENSEN BROS. MFG. CO., INC.

14TH & PACIFIC STREETS
JENSEN BROS. MFG. CO., INC.

BOX 477

COFFEYVILLE, KANSAS 67337
11/15/84



CRANK BALANCE SHORT BASE GROUND LEVEL TIE DOWN SETTING

UNIT SIZE	A	B	C	D	E	F	G	H	J	K	L	M	N	P	R
57A109R48E	34 3/4	20	54	37	52	24	213 1/4	52 1/2	15 1/2	17	30	15 1/2	12	7	7/8
57A76R54E	42 3/4	20	54	37	52	24	213 1/4	52 1/2	15 1/2	17	30	15 1/2	12	7	7/8
80A133R48E	31 5/8	20	62	46	58	28	240 1/4	61 1/2	19 1/2	20	36 1/4	17 1/2	14	8 1/2	1
80A133R54E	39 5/8	20	62	46	58	28	240 1/4	61 1/2	19 1/2	20	36 1/4	17 1/2	14	8 1/2	1
80A119R64E	47 5/8	20	62	46	58	28	240 1/4	61 1/2	19 1/2	20	36 1/4	17 1/2	14	8 1/2	1
114A133R54E	39 5/8	20	62	46	58	28	240 1/4	61 1/2	19 1/2	20	36 1/4	17 1/2	14	8 1/2	1
114A143R64E	47 5/8	20	62	46	58	28	240 1/4	61 1/2	19 1/2	20	36 1/4	17 1/2	14	8 1/2	1
114A173R64E	42 5/8	20	72	46	63	28	257 1/4	61 1/2	19 1/2	20	36 1/4	17 1/2	14	8 1/2	1
114A143R74E	58 5/8	20	72	46	63	28	251 1/4	61 1/2	19 1/2	20	36 1/4	17 1/2	14	8 1/2	1
114A119R86E	73 5/8	20	72	46	63	28	257 1/4	61 1/2	19 1/2	20	36 1/4	17 1/2	14	8 1/2	1
160A173R64E	42 5/8	20	69	53				69	22 1/4			19	14	8 1/2	1 1/8
160A143R74E	58 5/8	20	69	53				69	22 1/4			19	14	8 1/2	1 1/8
160A200R74E	57 1/2	20	83	58	72	31 1/2	296	72	22 1/4	23 1/2	42 1/4	21	16	8 1/2	1 1/8
160A173R80E	72 1/2	20	83	58	72	31 1/2	296	72	22 1/4	23 1/2	42 1/4	21	16	8 1/2	1 1/8
228A200R74E	57 1/2	20	83	58	72	31 1/2	296	72	22 1/4	23 1/2	42 1/4	21	16	8 1/2	1 1/4
228A213R86E	72 1/2	20	83	58	72	31 1/2	296	72	22 1/4	23 1/2	42 1/4	21	16	8 1/2	1 1/4
228A246R86E	56 3/8	20	117	46	50	31 1/2	327 1/2	75	22 3/8	24 1/4	43 3/4	21	16	8 1/2	1 1/4
228A173R100E	90 1/2	20	83	58	72	31 1/2	296	72	22 1/4	23 1/2	42 1/4	21	16	8 1/2	1 1/4
228A213R120E	99 3/8	20	117	46	50	31 1/2	327 1/2	75	22 3/8	24 1/4	43 3/4	21	16	8 1/2	1 1/4
320A246R86E	56 5/8	20	117	46	87	31 1/2	332 1/16	75	28 1/8	24 1/4	43 3/4	22	16	8 1/2	1 1/4
320A256R100E	74 5/8	20	117	46	87	31 1/2	332 7/16	75	28 1/8	24 1/4	43 3/4	22	16	8 1/2	1 1/4
320A305R100E	74 5/8	20	117	46	87	31 1/2	332 7/16	75	28 1/8	24 1/4	43 3/4	22	16	8 1/2	1 1/4
320A213R120E	99 5/8	20	117	46	87	31 1/2	332 7/16	75	28 1/8	24 1/4	43 3/4	22	16	8 1/2	1 1/4
320A256R120E	99 5/8	20	117	46	87	31 1/2	332 7/16	75	28 1/8	24 1/4	43 3/4	22	16	8 1/2	1 1/4

SUBJECT TO CHANGE WITHOUT NOTICE

JENSEN BROS. MFG. CO., INC.

14TH & PACIFIC STREETS
(316) 251-5700

BOX 477

COFFEYVILLE, KANSAS 67337
11/15/84



Crank Balance Pumping Units

MODELS: 57A109R48/57A76R54



FEATURES:

- Cast Alloy Bearing Housing With Roller Bearings
- Easy Cable Replacement
- Wrist Pin: Heavy Duty Double Tapered Roller Bearings
- Extended Peak Torque Capacity
- Deeper Walking Beam
- Gear Reducer Has Shear Pin Type Mountings

SPECIFICATIONS

MODELS: 57A109R48/57A76R54

GEAR REDUCER

PULLEY DIAMETER	# GROOVES PULLEY	GEAR OIL	TORQUE	PULLEY SHAFT DIA.	GEAR RATIO	PEAK H.P. @ 20 SPM
22½	4-"B"	7½ GAL.	57,000	1¾	30.4:1	18.1

FORMULA FOR BELT LENGTH AND MOTOR PULLEY SIZE.

Belt Length = (Pitch Dia. Jack Pulley + Pitch Dia. Motor Pulley) × 1.57 + (2 × Center Distance).

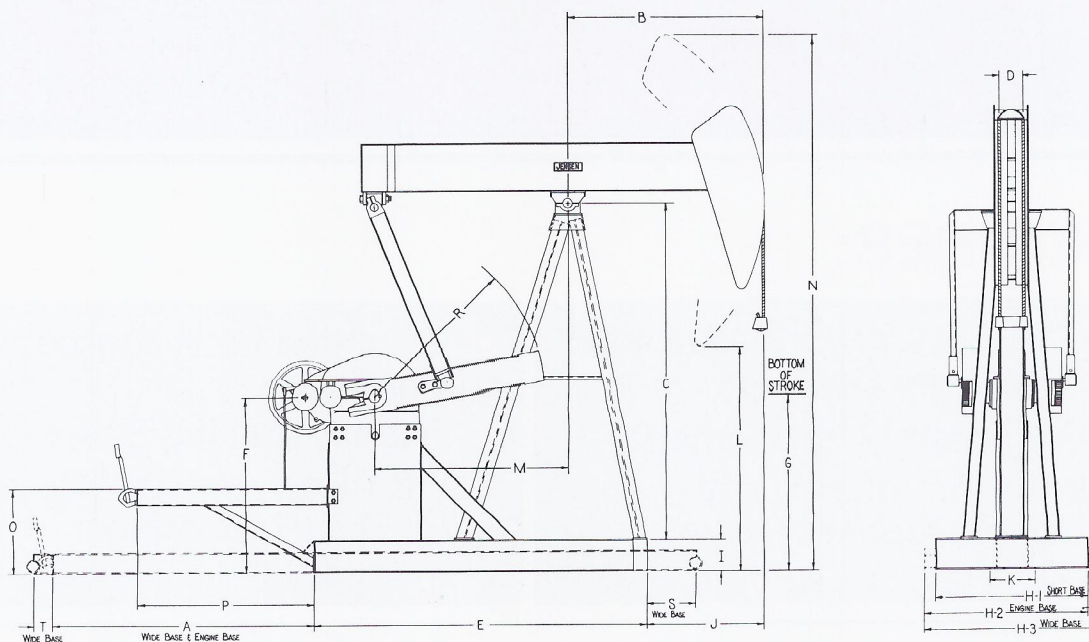
Pitch Dia. Motor Pulley = (Pitch Dia. Jack Pulley × Gear Ratio × S.P.M.) ÷ R.P. Motor

STRUCTURE

RATING UNIT SIZE	RECOMMENDED PPRL	WALKING BEAM SIZE	POLISHED ROD STROKE	SADDLE BEARING RATED CAPACITY	BEAM PITMAN BEARING RATED B-10 LIFE	WRIST PIN BEARING RATED B-10 LIFE
57A109R48	10,900	W16 x 45#	48/39¾/31½	50,000#	35,000	>100,000
57A76R54	7,600	W16 x 40#	54/44¾/35½	50,000#	77,000	>100,000

GENERAL DIMENSIONS

UNIT SIZE	A	B	C	D	E	F	G	H ₁	H ₂	H ₃	I	J	K	L	M	N	O	P	R	S	T
57A109R48	95¾	64	107 ¹¹ / ₁₆	5¾	115½	55	44	52½	56¼	60	12	34¾	15½	71	64	171	34	63 ⁷ / ₈	53	18¼	10¾
57A76R54	95¾	72	107 ¹¹ / ₁₆	5¾	115½	55	38	52½	56¼	60	12	42¾	15½	64	64	177	34	63 ⁷ / ₈	53	18¼	10¾





JENSEN

Since 1919

Crank Balance Pumping Units

MODELS: 57A109R48/57A76R54



FEATURES:

- Cast Alloy Bearing Housing With Roller Bearings
- Easy Cable Replacement
- Wrist Pin: Heavy Duty Double Tapered Roller Bearings
- Extended Peak Torque Capacity
- Deeper Walking Beam
- Gear Reducer Has Shear Pin Type Mountings

SPECIFICATIONS

MODELS: 57A109R48/57A76R54

GEAR REDUCER

PULLEY DIAMETER	# GROOVES PULLEY	GEAR OIL	TORQUE	PULLEY SHAFT DIA.	GEAR RATIO	PEAK H.P. @ 20 SPM
22½	4-"B"	7½ GAL.	57,000	1¾	30.4:1	18.1

FORMULA FOR BELT LENGTH AND MOTOR PULLEY SIZE.

Belt Length = (Pitch Dia. Jack Pulley + Pitch Dia. Motor Pulley) × 1.57 + (2 × Center Distance).

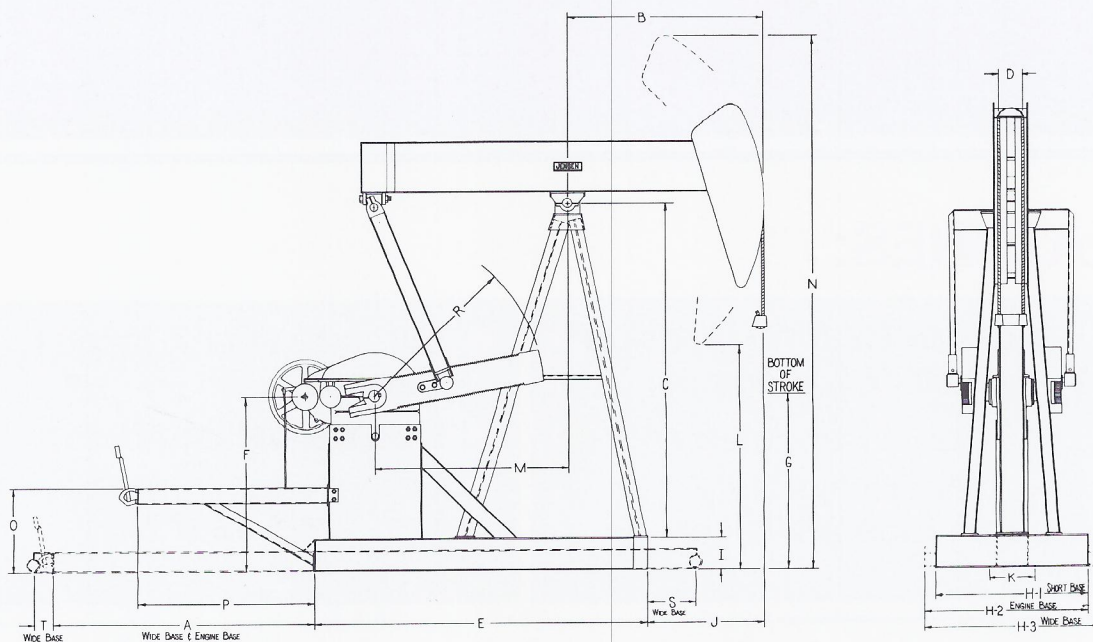
Pitch Dia. Motor Pulley = (Pitch Dia. Jack Pulley × Gear Ratio × S.P.M.) ÷ R.P. Motor

STRUCTURE

RATING UNIT SIZE	RECOMMENDED PPR L	WALKING BEAM SIZE	POLISHED ROD STROKE	SADDLE BEARING RATED CAPACITY	BEAM PITMAN BEARING RATED B-10 LIFE	WRIST PIN BEARING RATED B-10 LIFE
57A109R48	10,900	W16 x 45#	48/39¾/31½	50,000#	35,000	>100,000
57A76R54	7,600	W16 x 40#	54/44¾/35½	50,000#	77,000	>100,000

GENERAL DIMENSIONS

UNIT SIZE	A	B	C	D	E	F	G	H ₁	H ₂	H ₃	I	J	K	L	M	N	O	P	R	S	T
57A109R48	95¾	64	107 ¹¹ / ₁₆	5¾	115½	55	44	52½	56¼	60	12	34¾	15½	71	64	171	34	63 ³ / ₈	53	18¼	10¾
57A76R54	95¾	72	107 ¹¹ / ₁₆	5¾	115½	55	38	52½	56¼	60	12	42¾	15½	64	64	177	34	63 ³ / ₈	53	18¼	10¾





JENSEN

Since 1919

Crank Balance Pumping Units

114A133R54/114A143R64/
MODELS: 114A173R64/114A143R74/
114A119R86



FEATURES:

- Cast Alloy Bearing Housing With Roller Bearings
- Easy Cable Replacement
- Wrist Pin: Heavy Duty Double Tapered Roller Bearings
- Extended Peak Torque Capacity
- Deeper Walking Beam
- Gear Reducer Has Shear Pin Type Mountings

SPECIFICATIONS

MODELS: 114A133R54/114A143R64/
114A173R64/114A143R74/
114A119R86

GEAR REDUCER

PULLEY DIAMETER	# GROOVES PULLEY	GEAR OIL	TORQUE	PULLEY SHAFT DIA.	GEAR RATIO	PEAK H.P. @ 20 SPM
23.6	4-"C"	10 GAL.	114,000	2	30.1:1	36.2

FORMULA FOR BELT LENGTH AND MOTOR PULLEY SIZE.

Belt Length = (Pitch Dia. Jack Pulley + Pitch Dia. Motor Pulley) × 1.57 + (2 × Center Distance).

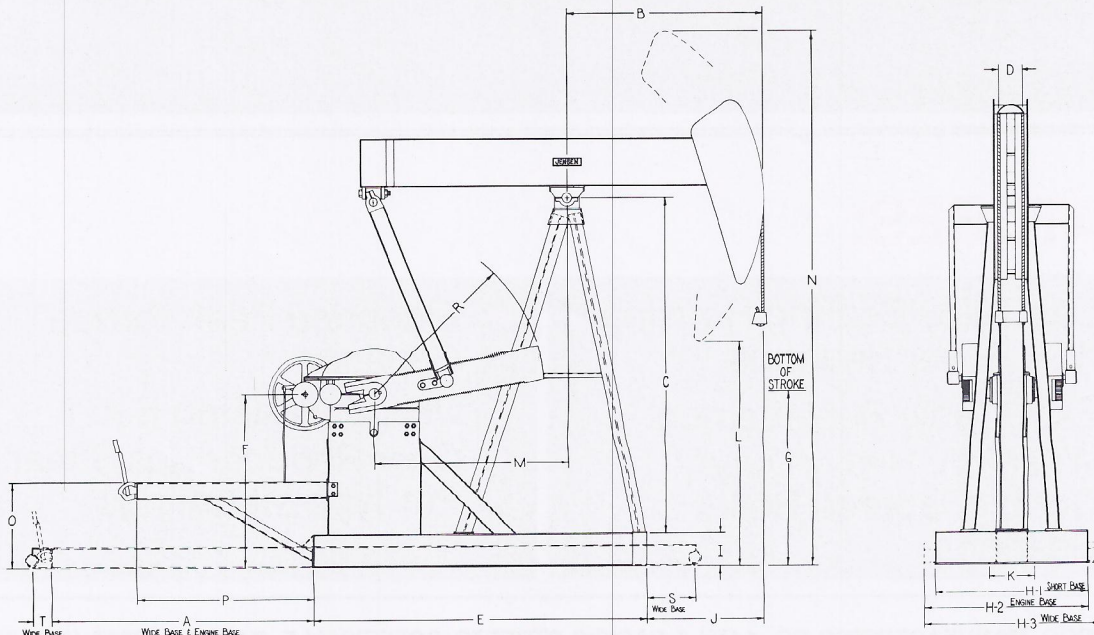
Pitch Dia. Motor Pulley = (Pitch Dia. Jack Pulley × Gear Ratio × S.P.M.) ÷ R.P. Motor

STRUCTURE

RATING UNIT SIZE	RECOMMENDED PPRL	WALKING BEAM SIZE	POLISHED ROD STROKE	SADDLE BEARING RATED B-10 LIFE	BEAM PITMAN BEARING RATED B-10 LIFE	WRIST PIN BEARING RATED B-10 LIFE
114A133R54	13,300	W18 x 55#	54/46/37½	>100,000	>100,000	>100,000
114A143R64	14,300	W21 x 62#	64/53/42	>100,000	>100,000	>100,000
114A173R64	17,300	W21 x 68#	64/53/42	60,000	96,000	>100,000
114A143R74	14,300	W24 x 76#	74/61/48	80,000	>100,000	>100,000
114A119R86	11,900	W24 x 76#	86/71/56	>100,000	>100,000	>100,000

GENERAL DIMENSIONS

UNIT SIZE	A	B	C	D	E	F	G	H ₁	H ₂	H ₃	I	J	K	L	M	N	O	P	R	S	T
114A133R54	106¼	72	131¼	7	132	60½	60	61½	67	72½	14	39%	19½	89	72¼	207	34	64 ⁷ / ₁₆	59	23¾	12
114A143R64	106¼	80	131¼	7	137	60½	50	61½	67	72½	14	47%	19½	82	77¼	212	34	64 ⁷ / ₁₆	58½	20¾	10
114A173R64	112¼	80	153¾	7	143	77	72	61½	67	72½	14	42%	19½	102	77¼	235	40	80%	74	20¾	12
114A143R74	112¼	96	153¾	8¼	143	77	60	61½	67	72½	14	58%	19½	93	77¼	244	40	80%	74	20¾	12
114A119R86	112¼	111	153¾	8¼	143	77	40	61½	67	72½	14	73%	19½	82	77¼	253	40	80%	74	20¾	12



Specifications and Prices subject to change without notice.



JENSEN

Since 1919

Crank Balance Pumping Units

MODELS: 160A173R64/160A143R74/
160A200R74/160A173R86



FEATURES:

- Cast Alloy Bearing Housing With Roller Bearings
- Easy Cable Replacement
- Wrist Pin: Heavy Duty Double Tapered Roller Bearings
- Extended Peak Torque Capacity
- Deeper Walking Beam
- Gear Reducer Has Shear Pin Type Mountings

SPECIFICATIONS

MODELS: 160A173R64/160A143R74/
160A200R74/160A173R86

GEAR REDUCER

PULLEY DIAMETER	# GROOVES PULLEY	GEAR OIL	TORQUE	PULLEY SHAFT DIA.	GEAR RATIO	PEAK H.P. @ 20 SPM
29.6	4-"C"	12 GAL.	160,000	3	28.8:1	50.8

FORMULA FOR BELT LENGTH AND MOTOR PULLEY SIZE.

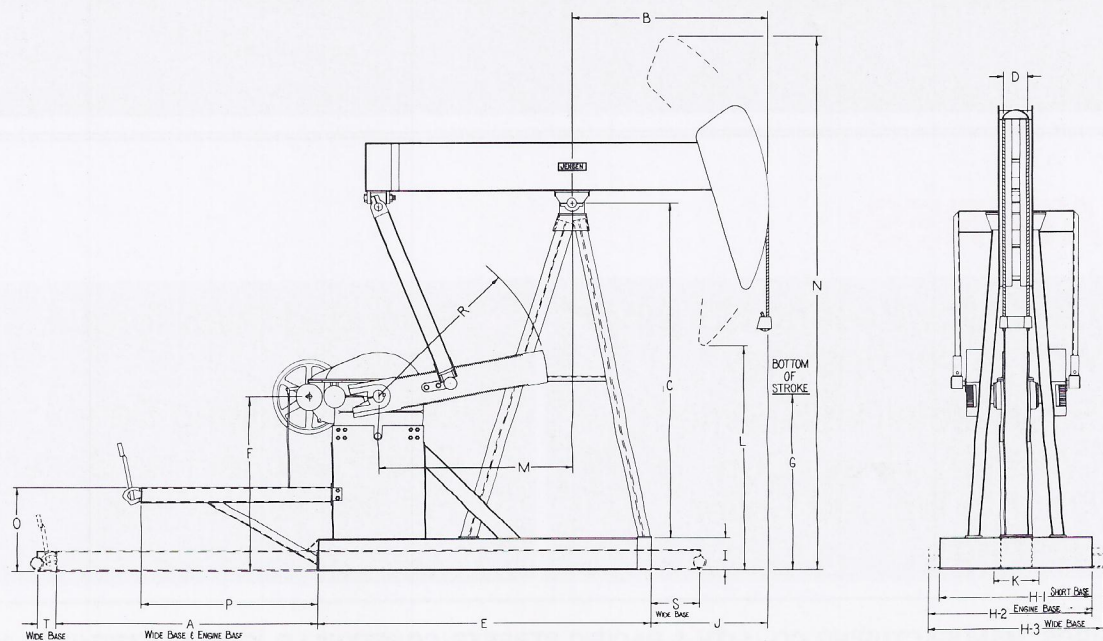
Belt Length = (Pitch Dia. Jack Pulley + Pitch Dia. Motor Pulley) × 1.57 + (2 × Center Distance).
Pitch Dia. Motor Pulley = (Pitch Dia. Jack Pulley × Gear Ratio × S.P.M.) ÷ R.P. Motor

STRUCTURE

RATING UNIT SIZE	RECOMMENDED PPRL	WALKING BEAM SIZE	POLISHED ROD STROKE	SADDLE BEARING RATED B-10 LIFE	BEAM PITMAN BEARING RATED B-10 LIFE	WRIST PIN BEARING RATED B-10 LIFE
160A173R64	17,300	W21 x 68#	64/53/42	60,000	96,000	>100,000
160A143R74	14,300	W24 x 76#	74/61/48	80,000	>100,000	>100,000
160A200R74	20,000	W24 x 94#	74/61/48	75,000	100,000	51,000
160A173R86	17,300	W24 x 94#	86/71/56	88,000	100,000	51,000

GENERAL DIMENSIONS

UNIT SIZE	A	B	C	D	E	F	G	H ₁	H ₂	H ₃	I	J	K	L	M	N	O	P	R	S	T
160A173R64	109½	80	153⅞	7	146	77	72	69	74½	80	14	42⅝	22¼	102	77¼	235	40	77⅞	74	20¾	12
160A143R74	109½	96	153⅞	8¼	146	77	60	69	74½	80	14	58⅞	22¼	93	77¼	244	40	77⅞	74	20¾	12
160A200R74	129¾	96	167¼	8¼	164¼	87	77	72	78¼	84½	16	57½	22¼	110	95⅞	260	42	73¼	84	24	12
160A173R86	129¾	111	167¼	8¼	164¼	87	57	72	78¼	84½	16	72½	22¼	98	95⅞	272	42	73¼	84	24	12



Specifications and Prices subject to change without notice.



JENSEN

Since 1919

Crank Balance Pumping Units

228A246R86/228A213R120/
MODELS: 228A200R74/228A213R86/
228A173R100



FEATURES:

- Cast Alloy Bearing Housing With Roller Bearings
- Easy Cable Replacement
- Wrist Pin: Heavy Duty Double Tapered Roller Bearings
- Extended Peak Torque Capacity
- Deeper Walking Beam
- Gear Reducer Has Shear Pin Type Mountings

SPECIFICATIONS

228A246R86/228A213R120/
**MODELS: 228A200R74/228A213R86/
 228A173R100**

GEAR REDUCER

PULLEY DIAMETER	# GROOVES PULLEY	GEAR OIL	TORQUE	PULLEY SHAFT DIA.	GEAR RATIO	PEAK H.P. @ 20 SPM
35.6	5-"C"	12 GAL.	228,000	3	28.8:1	72.4

FORMULA FOR BELT LENGTH AND MOTOR PULLEY SIZE.

Belt Length = (Pitch Dia. Jack Pulley + Pitch Dia. Motor Pulley) × 1.57 + (2 × Center Distance).

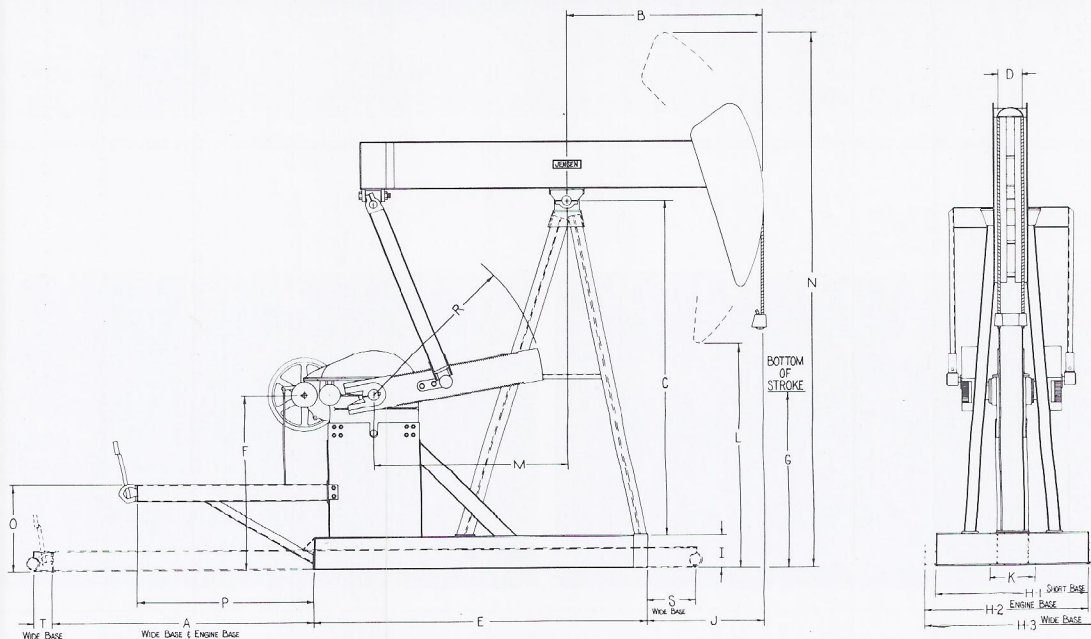
Pitch Dia. Motor Pulley = (Pitch Dia. Jack Pulley × Gear Ratio × S.P.M.) ÷ R.P. Motor

STRUCTURE

RATING UNIT SIZE	RECOMMENDED PPRL	WALKING BEAM SIZE	POLISHED ROD STROKE	SADDLE BEARING RATED B-10 LIFE	BEAM PITMAN BEARING RATED B-10 LIFE	WRIST PIN BEARING RATED B-10 LIFE
228A246R86	24,600	W24 x 117#	86/72/58	>100,000	>100,000	>100,000
228A213R120	21,300	W24 x 131#	120/101/82	>100,000	>100,000	66,300
228A213R86	21,300	W24 x 104#	86/71/56	46,000	48,000	25,500
228A200R74	20,000	W24 x 94#	74/61/48	75,000	100,000	51,000
228A173R100	17,300	W24 x 104#	100/82½/65	66,000	60,000	31,000

GENERAL DIMENSIONS

UNIT SIZE	A	B	C	D	E	F	G	H ₁	H ₂	H ₃	I	J	K	L	M	N	O	P	R	S	T
228A246R86	135¼	111	215⅞	12	190⅞	98	108	75	81¼	87½	16	56⅞	22⅜	146	111	317	42⅜	87⅞	95	14¾	15⅞
228A213R120	135¼	154	215⅞	12	190⅞	98	73	75	81¼	87½	16	99⅞	22⅜	115	111	352	42⅜	87⅞	95	14¾	15⅞
228A213R86	129¾	111	167¼	8¼	164¼	87	59	72	78¼	84½	16	72½	22¼	98	95⅞	272	42	73¼	84	24	12
228A200R74	129¾	96	167¼	8¼	164¼	87	77	72	78¼	84½	16	57½	22¼	110	95⅞	260	42	73¼	84	24	12
228A173R100	129¾	129	167¼	8¼	164¼	87	44	72	78¼	84½	16	90½	22¼	84	95⅞	286	42	73¼	84	24	12





Crank Balance Pumping Units

320A246R86/320A256R100/
MODELS: 320A305R100/320A213R120/
320A256R120



FEATURES:

- Cast Alloy Bearing Housing With Roller Bearings
- Easy Cable Replacement
- Wrist Pin: Heavy Duty Double Tapered Roller Bearings
- Extended Peak Torque Capacity
- Deeper Walking Beam
- Gear Reducer Has Shear Pin Type Mountings

SPECIFICATIONS

MODELS:	320A246R86/320A256R100/
	320A305R100/320A213R120/
	320A256R120

GEAR REDUCER

PULLEY DIAMETER	#GROOVES PULLEY	GEAR OIL	TORQUE	PULLEY SHAFT DIA.	GEAR RATIO	PEAK H.P. @ 20 SPM
44	6-"C"	30 Gal.	320,000	3"	29:1	101.6

FORMULA FOR BELT LENGTH AND MOTOR PULLEY SIZE.

Belt Length = (Pitch Dia. Jack Pulley + Pitch Dia. Motor Pulley) X 1.57 + (2 X Center Distance).
 Pitch Dia. Motor Pulley = (Pitch Dia. Jack Pulley X Gear Ratio X S.P.M.) ÷ R.P. Motor

STRUCTURE

RATING UNIT SIZE	RECOMMENDED PPRL	WALKING BEAM SIZE	POLISHED ROD STROKE	SADDLE BEARING RATED B-10 LIFE	BEAM PITMAN BEARING RATED B-10 LIFE	WRIST PIN BEARING RATED B-10 LIFE
320A246R86	24,600	W24 x 117#	86/72/58	>100,000	>100,000	>100,000
320A256R100	25,600	W24 X 131#	100/84 ^{1/2} /69	>100,000	>100,000	66,300
320A305R100	30,500	W24 X 146#	100/84 ^{1/2} /69	82,000	>100,000	37,000
320A213R120	21,300	W24 X 131#	120/101/82	>100,000	>100,000	66,300
320A256R120	25,600	W24 X 146#	120/101/82	>100,000	>100,000	36,000

GENERAL DIMENSIONS

UNIT SIZE	A	B	C	D	E	F	G	H ₁	H ₂	H ₃	I	J	K	L	M	N	O	P	R	S	T
320A246R86	140	111	215 ^{1/8}	12	190 ^{7/16}	98	108	75	81 ^{1/4}	87 ^{1/2}	16	56 ^{5/8}	28 ^{1/8}	146	111	317	42 ^{3/8}	88 ^{11/16}	95	14 ^{3/4}	14 ^{13/16}
320A256R100	140	129	215 ^{1/8}	12	190 ^{7/16}	98	93	75	81 ^{1/4}	87 ^{1/2}	16	74 ^{5/8}	28 ^{1/8}	132	111	333	42 ^{3/8}	88 ^{11/16}	95	14 ^{3/4}	14 ^{13/16}
320A305R100	140	129	215 ^{1/8}	12	190 ^{7/16}	98	93	75	81 ^{1/4}	87 ^{1/2}	16	74 ^{5/8}	28 ^{1/8}	132	111	333	42 ^{3/8}	88 ^{11/16}	95	14 ^{3/4}	14 ^{13/16}
320A213R120	140	154	215 ^{1/8}	12	190 ^{7/16}	98	73	75	81 ^{1/4}	87 ^{1/2}	16	99 ^{5/8}	28 ^{1/8}	115	111	352	42 ^{3/8}	88 ^{11/16}	95	14 ^{3/4}	14 ^{13/16}
320A256R120	140	154	215 ^{1/8}	12	190 ^{7/16}	98	73	75	81 ^{1/4}	87 ^{1/2}	16	99 ^{5/8}	28 ^{1/8}	115	111	352	42 ^{3/8}	88 ^{11/16}	95	14 ^{3/4}	14 ^{13/16}

