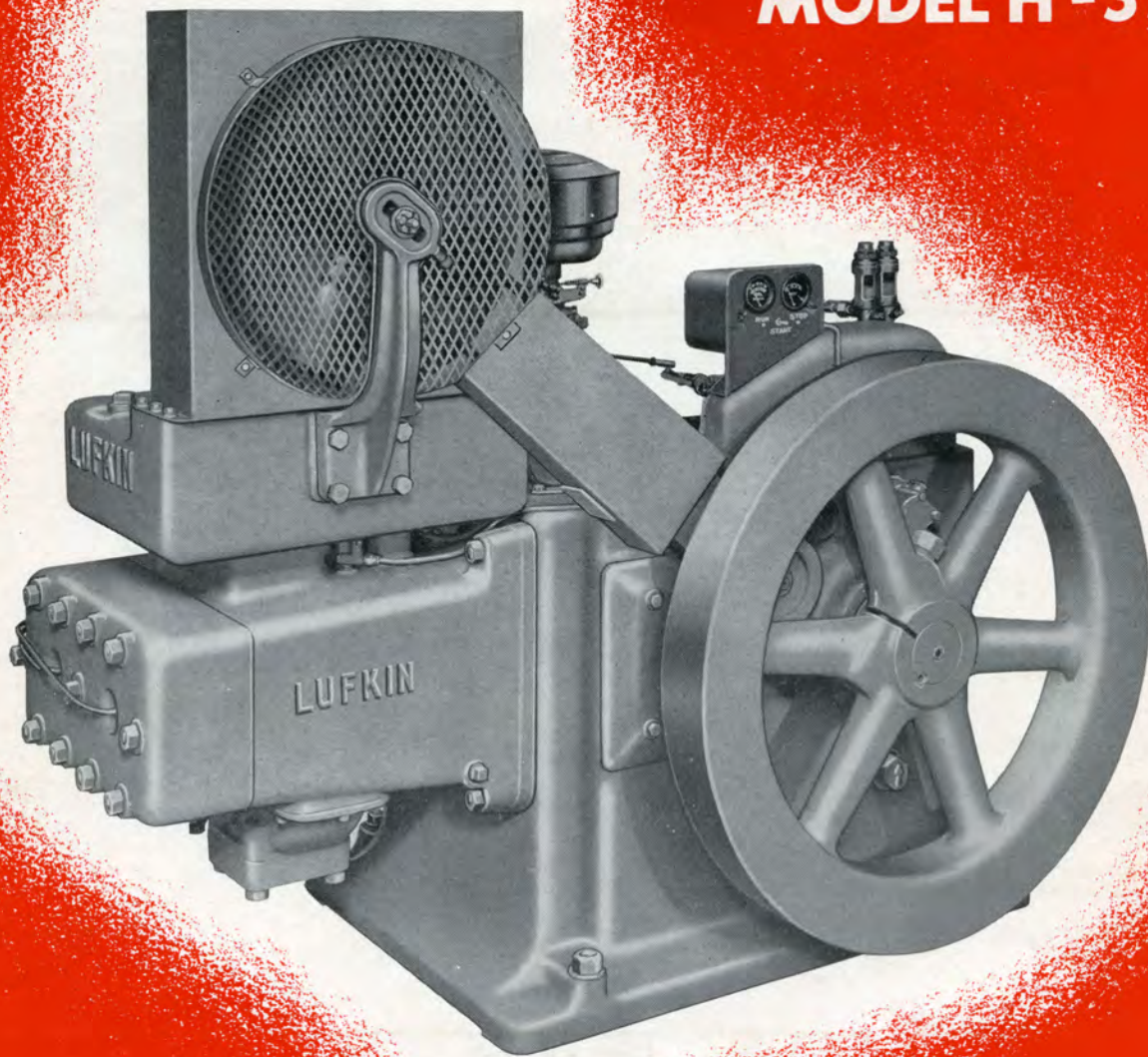


# LUFKIN

MODEL H-333



TWO CYCLE • TWO CYLINDER • 20-30 HORSEPOWER

## OIL FIELD ENGINE

MANUFACTURED BY

**LUFKIN FOUNDRY & MACHINE CO.** LUFKIN TEXAS

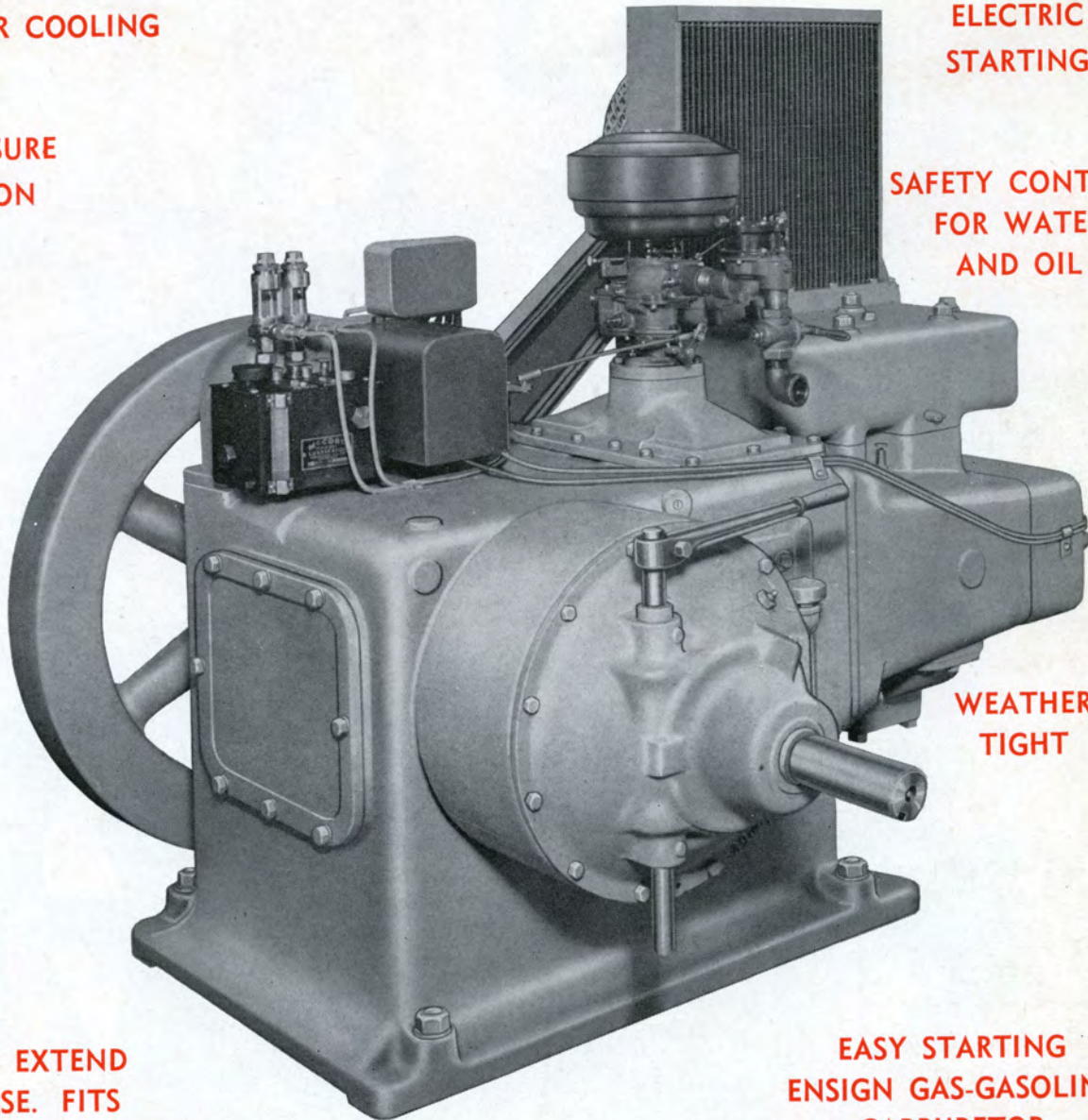


CONDENSER COOLING

FULL PRESSURE  
LUBRICATION

ELECTRIC  
STARTING

SAFETY CONTROL  
FOR WATER  
AND OIL



WEATHER  
TIGHT

FLYWHEEL  
DOES NOT EXTEND  
BELOW BASE. FITS  
ALL PUMPING UNIT BASES

EASY STARTING  
ENSIGN GAS-GASOLINE  
CARBURETOR

## FEATURES

1. **Condenser cooling** provides uniform efficient cooling, longer life to cylinders because of better lubrication, freedom of corrosion in sour gases and eliminates water pump.
2. **Two cylinder two cycle** design gives smoother, more dependable performance.
3. **Positive full pressure lubrication** to connecting rods, crossheads, crosshead guides, and auxiliary gear train. A force feed lubricator positively lubricates pistons and cylinders.
4. **Auxiliary drive**, simple, fool-proof gear driven magneto, governor and lubricator assembly easily serviced or removed as a unit.
5. **Crosshead construction** with full metallic packing prevents crankcase contamination, giving longer life to lubricating oil and bearings.
6. **Ensign gas mixer**, and regulator provides easy starting. Starting on gasoline is provided with combination carburetor (optional).
7. **Electric starter** built into engine (optional).
8. **Base of engine** allows flywheel to clear slide rails. Does not require special bases to accommodate engine.
9. **All weather operation** is assured by dust tight engine and magneto cover.  
The Lufkin H-333 engine is furnished as a complete power unit. Standard equipment includes safety control for water and oil, magneto cover, Ensign natural gas mixer, Twin Disc clutch, oil bath air filter, Bosch rotary magneto and fan and belt guards. Optional equipment combination gas-gasoline mixer and electric starter.

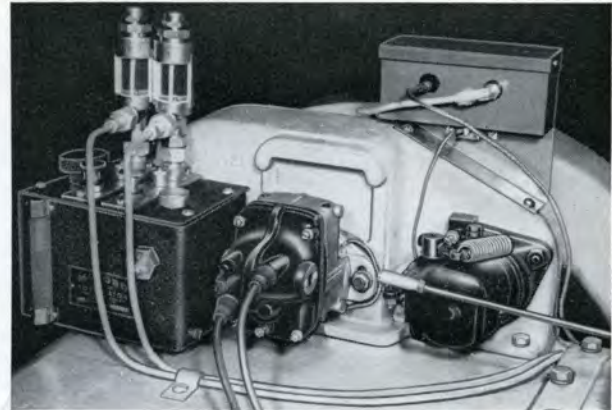


2C89

**RUGGED COUNTERBALANCED  
CRANK SHAFT**

**CROSSHEAD DESIGN  
PREVENTS CRANKCASE  
CONTAMINATION**

**PRECISION  
CRANK PIN  
BEARINGS**



**AUXILIARY DRIVE**

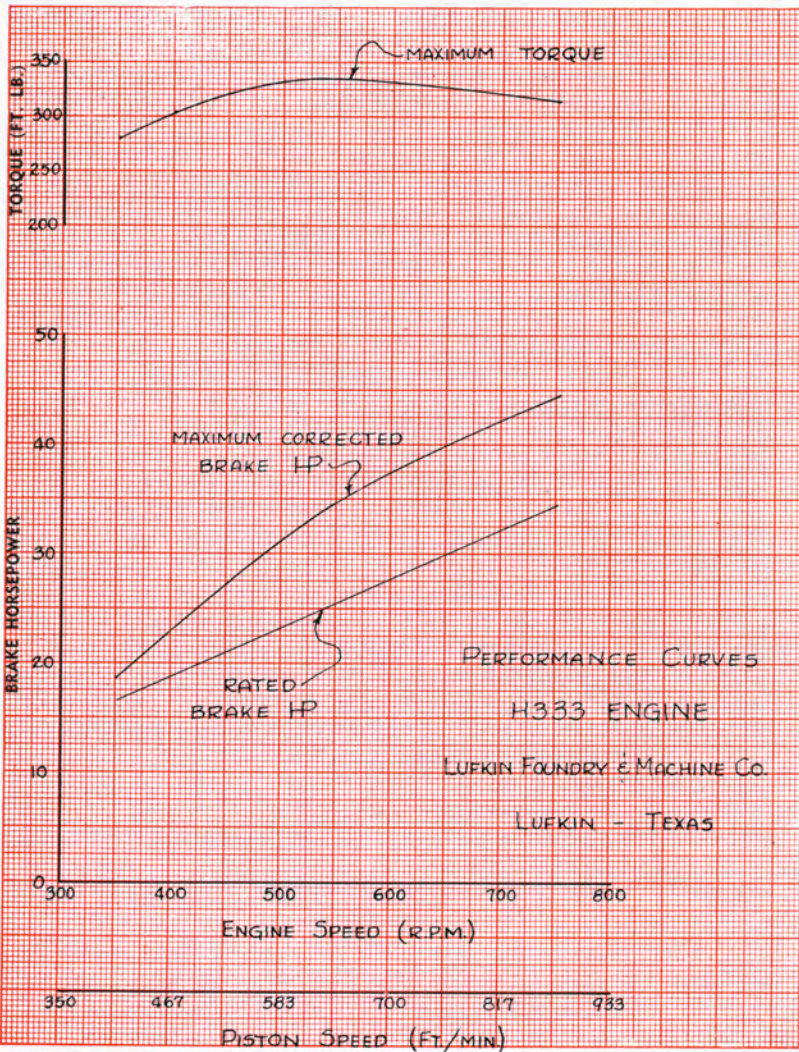
**SIMPLE, EASILY ACCESSIBLE  
GEAR DRIVEN  
PRESSURE LUBRICATED  
AUXILIARIES**



**CRANKSHAFT AND PISTON ASSEMBLY**

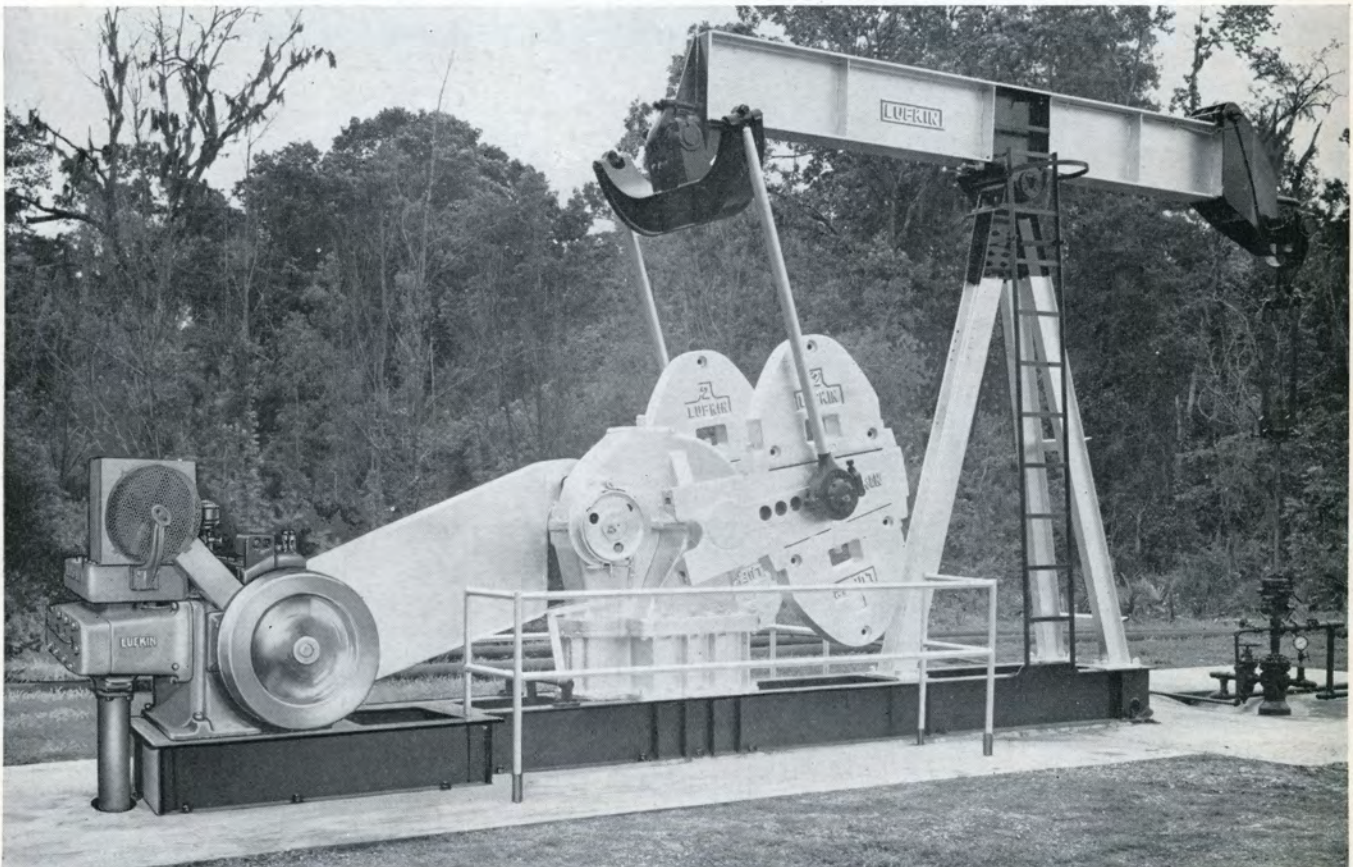
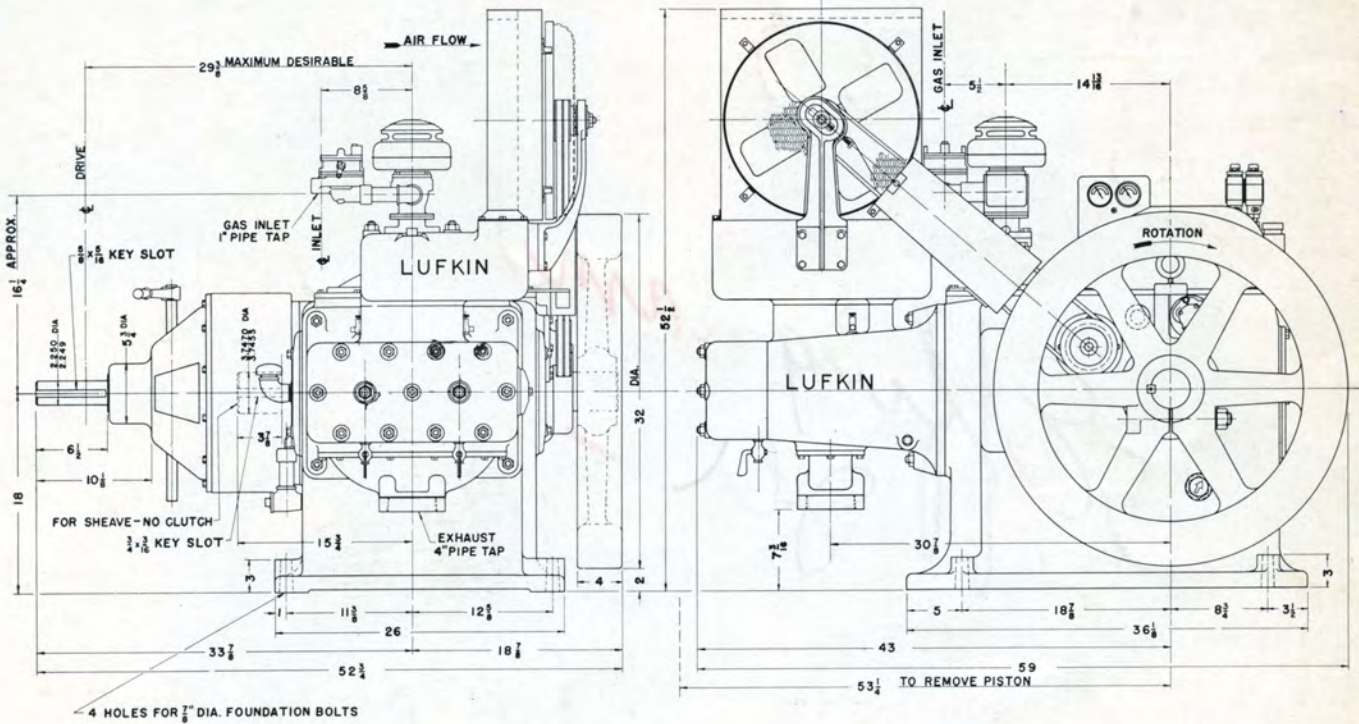
**SPECIFICATIONS**

Type .....	2 cycle
No. Cylinders .....	2
Speed Range, RPM.....	350-750
Rated HP 425 RPM.....	20
Rated HP 650 RPM.....	30
Bore .....	5 1/2"
Stroke .....	7"
Displacement, Cu. Ins. ....	333
Piston Speed 650 RPM ft./min.	758
Diameter Crosshead Pin.....	2 1/2"
Length Crosshead Pin.....	4 5/8"
Bearing Area, Sq. Ins. ....	11.6
Diameter Crank Pin.....	3 3/4"
Length Crank Pin.....	27 1/8"
Diameter of Flywheel.....	32"
Flywheel WR <sup>2</sup> Ft. <sup>2</sup> Lbs. ....	510
Diameter Exhaust Pipe.....	4"
Gas Inlet.....	1"
Oil Capacity, Crankcase.....	20 Qts.
Oil Capacity, Lubricator.....	1 1/2 Qts.
Water Capacity .....	28 Qts.
Foundation Bolts:	
No. and Size.....	(4) 7/8"
Weight of Engine .....	2900#





## INSTALLATION SPACE PLAN



Model H-333 engine driving Lufkin Pumping Unit. A typical installation completely designed and engineered by Lufkin.

**OTHER LUFKIN ENGINES:**  
 Model GSC Vertical 25-35 HP . . . Model GSDH Horizontal 40-60 HP.  
 Engine generator units: Lufkin generator units are available for any electric service.