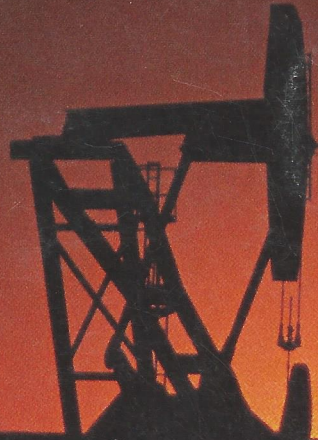


CAT. 88-89

LUFKIN

**PUMPING
UNITS**



LUFKIN

INDUSTRIES, INC.
LUFKIN, TEXAS

1. Oil Field Pumping Units:

- A. Air Balanced Pumping Units—Pages 27-30.
 B. Beam Balanced Pumping Units—Pages 32-33.
 C. Crank Balanced Pumping Units—Pages 10-18.
 D. Conventional Pin Mount Pumping Units—Page 13.
 E. Mark II Uitorque Pumping Units—Pages 19-26.
 F. Low-Profile Pumping Units—Page 31.

Factory and Executive Offices P.O. Box 849, LUFKIN, TEXAS 75902-0849
 Phone: 409-634-2211

OIL FIELD SALES AND SERVICE LOCATIONS

ABILENE, TEXAS 79601
 241 Pine
 Suite 8 LA
 Phone: 915/676-0394

BAKERSFIELD, CALIFORNIA 93308
 2500 Parker Lane
 Phone: 805/327-3563

BALTIMORE MARYLAND AREA
 Forest Hill, Maryland 21050
 2003 Rock Spring Road
 Suite 2A
 Phone: 301/879-9264

CALGARY, ALBERTA
CANADA T2P OK4
 225 McDougall Place
 808 4th Ave. S.W.
 Phone: 403/234-7692

CASPER, WYOMING 82601
 610 N. Warehouse Road
 P.O. Box 1849
 Phone: 307/234-5346

CHICAGO AREA
 Crystal Lake, Illinois
 60014-0382
 18 Grant St.
 P.O. Box 382
 Phone: 815/459-4033

CLEVELAND, OHIO 44130
 Suite 215-6500 Pearl Road
 Phone: 216/842-7879

DALLAS, TEXAS 75206
 717 Meadows Bldg.
 Phone: 214/691-6133

DENVER, COLORADO AREA
 #4 Dry Creek Circle
 Suite 240
 Littleton, Colorado 80121
 Phone: 303/795-9253

EDMONTON AREA
 P.O. Box 240
 1107 8th A. Street
 Nisku Industrial Park
 Nisku, Alberta, Canada
 T0C 2G0
 Phone: 403/955-7566

HOUSTON, TEXAS 77244
 P.O. Box 440069
 810 Highway 6 South 77079
 Suite 206
 Phone: 713/870-9151

HOUSTON, TEXAS 77024
 820 Gessner
 Suite 1450
 Phone: 713/468-7804

KILGORE, TEXAS 75662-0871
 P.O. Box 871
 Phone: 214/984-3875

LOS ANGELES AREA
 5455 Garden Grove Blvd.
 Westminster, California 92683
 Phone: 714/892-1145

NEW ORLEANS AREA
 2637 Edenborn Ave.
 Suite 304
 Metairie, Louisiana 70002
 Phone: 504/885-2841

NEW YORK CITY AREA
 100 Menlo Park Office Building
 Room 408
 Edison, New Jersey 08837
 Phone: 201/549-1021
 Telex: 710-998-0559

ODESSA, TEXAS 79760
 East Hwy. 80
 P.O. Box 1632
 Phone: 915/563-0363

OKLAHOMA CITY
OKLAHOMA 73143
 P.O. Box 95205
 2300 S. Prospect
 Phone: 405/677-0567

PITTSBURGH,
PENNSYLVANIA 15235
 201 Penn Center Blvd.
 Suite 304
 Phone: 412/241-5131

SAN ANTONIO, TEXAS 78217
 Suite 270
 2700 N.E. Loop 410
 Phone: 512/654-3888

TULSA, OKLAHOMA 74105
 2825 East Skelly Drive
 Suite 830
 Phone: 918/749-6846

INTERNATIONAL DIVISION

HOUSTON, TEXAS 77060
 Suite 302
 12941 Interstate 45 N.
 Phone: 713/872-5835
 Telex: 166163 LUFKN UT
 Cable: Luffo Houston Texas
 Telecopier: 713/873-2148

INTERNATIONAL REPRESENTATIVES

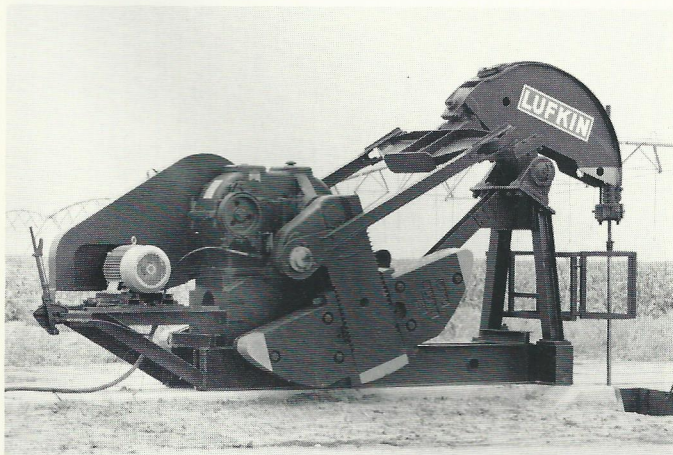
Country	Representative
Africa	D.I.M.A.P.E.
France	41, Rue de Sevres 92100 Boulogne, France Telephone: 011-331-4-605-8200
Argentina	Lix Klett S.A.I.C. Sarmiento 1236 1041 Buenos Aires, Argentina Telephone: 011-54-1-35-2076
Australia	Ken N. Wilson Pty Ltd. G.P.O. Box 323 Brisbane, Queensland, Australia Telephone: 011-61-7-844-1406
Bolivia	Matrepol La Paz, Bolivia Telephone: 011-591-354561
Brazil	Magatec Servicios Tecnicos Ltda. Av. Rio Branco 156 Rio de Janeiro, Brazil Telephone: 011-55-21-262-3382
Colombia	A y R Universal Ltda. Apartado Aereo 16238 Bogota, Colombia Telephone: 011-57-285-8427
Ecuador	Petro Sercon Cia. Ltd. Amazones 8342 Quito Ecuador Telephone: 011-593-254-7300
Egypt	Tawakol Enterprises 70 El Thawra Street Heliopolis 11341 Cairo, Egypt Telephone: 011-20-2-66-9206 & 66-5529
India	Larson & Toubro Ltd. L&T House Ballard Estate, P.O. Box 278 Bombay 400 038, India Telephone: 011-91-22-26-8181
Indonesia	P.T. Imeco Jl. Wolter Monginsidi 122 Blok L, Keb, Baru Jakarta - Indonesia Telephone: 011-62-21-772889
Mexico	Claudio Nova Juan Cousin #68 Colonia Alfonso XIII Mexico D.F., C.P. 01460 Telephone: 1-905-598-6685
Mexico	Perfotec S.A. San Francisco 1838 6 piso Mexico 03100 D.F. Telephone: 1-905-524-3137
Oman	Oman Oilfield Service Center L.L.C. P.O. Box 4160 Ruwi Sultanate of Oman Telephone: 011-96-8-602044
Peru	Fabricaciones Mecanicas, S.A. Jr. Chavez Tueros 1266 Chacra Rios Sur Lima, Peru Telephone: 011-51-14-310216
Trinidad	H.J. Gransaul & Company Ltd. P.O. Box 98 San Fernando, Trinidad, W.I. Telephone: 1-809-657-8051
Turkey	PETSAN P.O. Box 217 Bakanlikar, Turkey Telephone: 011-90-41-253431
U.K.	Edward H. Mills Associates 2, Fernhill Oxshott, Surrey, KT20JH England Telephone: 011-44-37284-3067
Venezuela	Lukiven S.A. Avenida 17, No. 128-60 Maracaibo, Venezuela Telephone: 011-58-61-616301
Germany	Friedrich Leutert GmbH & Co. Postfach 1111 2126 Adendorf, W. Germany Telephone: 011-49-41-315-1032
Italy	Angelo Crippa SIIRTEC 20154 Milano C. So Sempione, 14 Italy Telephone: (02) 31 14 61-2-3-4-5

SIX TYPES OF LUFKIN SUCKER ROD PUMPING UNITS ARE AVAILABLE TO HANDLE ALL INSTALLATION PROBLEMS AND DOWN HOLE CONDITIONS.



MARK II UNITORQUE UNITS

The Mark II unit, due to its unique geometry and phased counterbalance feature, lowers peak torque and horsepower requirements. The unusual geometry of the Mark II produces a somewhat slower up stroke and faster down stroke with reduced acceleration where the load is greatest, resulting in lower peak loads and longer rod life.

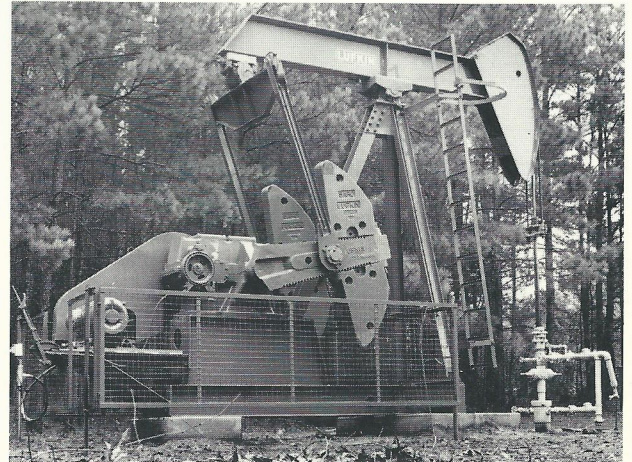


LOW PROFILE UNITS

The LUFKIN Low Profile unit is a compact unit designed for installation in fields irrigated by traveling sprinkler systems or in urban areas where the low profile feature may be desirable. Several sizes of the unit can be shipped from the factory completely assembled.

COMPUTER SERVICE IS AVAILABLE TO AID IN SIZING PUMPING UNITS, SUCKER RODS, AND PUMPS TO INSURE MAXIMUM PRODUCTION AND OPTIMUM UTILIZATION OF EQUIPMENT.

ALL LUFKIN PUMPING UNITS CARRY THE API MONOGRAM SIGNIFYING THAT THEY MEET OR EXCEED THE LATEST API STANDARD FOR THE DESIGN OF SUCKER ROD PUMPING UNITS.



CONVENTIONAL UNITS

The LUFKIN Conventional Crank Balanced Unit, widely known and accepted, is the old reliable "WORK HORSE" of the oil patch. This is the most universally adaptable unit in the "LUFKIN LINE," simple to operate and requires minimum maintenance. Shown here is the new base design installed on a two-point foundation.

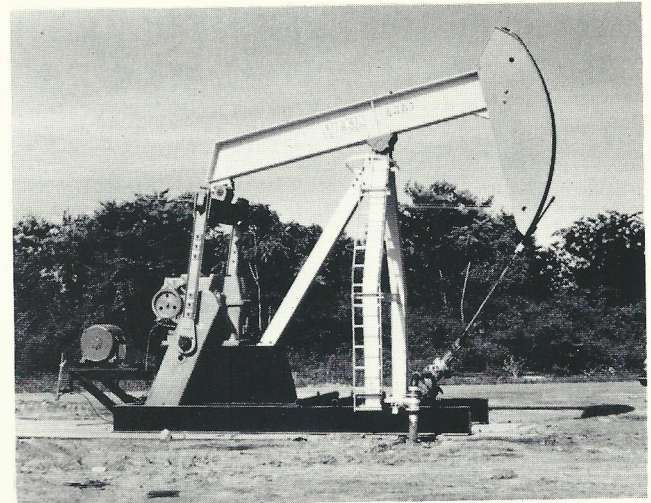


AIR BALANCED UNITS

The utilization of compressed air instead of heavy cast iron counterweights allows more accurate fingertip control of counterbalance. As a result, the weight of the unit is greatly reduced, significantly lowering transportation and installation costs. Air Balanced units have a distinct advantage in the larger sizes with long strokes, where cast iron counterweights on conventional crank counterbalanced units must be so massive that their use is practically prohibitive.

**BEAM BALANCED UNITS**

The LUFKIN Beam Balanced unit has the same rugged dependability as the Conventional unit. These units fill the need of economically producing many of the shallow wells.

**SLANT HOLE UNITS**

The Slant Hole unit is designed to pump wells deviated up to 45° at the surface. Many standard conventional unit components are used to manufacture these units.

DOUBLE REDUCTION GEAR UNITS

1. Horizontally split gear housing especially built for oil well service, of rugged construction with large factors of safety.
2. Precision cut Lufkin herringbone gears are used exclusively in all Lufkin pumping units.
3. Gear Cases are jig bored to same accuracy as gears.
4. All shafts forged from alloy steel, heat treated and precision ground.
5. Oversize bronze bushings on crankshafts. Easily renewable but seldom requiring replacement.
6. All pinions float on Straight Roller Bearings.
7. No Oil Pumps. Lufkin gears operate in oil bath with gear wipers to flood bearings.

GEAR SPECIFICATIONS**DOUBLE REDUCTION****2560D GEAR REDUCER:**

RATING: 2,560,000 In. Lbs. Peak Torque
RATIO OF GEARS: 34.53
CRANKSHAFT DIA.: 113/4"
SHEAVE: 55", 68" P.D.-12D
6 1/2" Bore
GEAR BOX OIL CAPACITY: 235 Gallons

1824D GEAR REDUCER:

RATING: 1,824,000 In. Lbs. Peak Torque
RATIO OF GEARS: 28.33
CRANKSHAFT DIA.: 9" (Mark II, 10 1/2")
SHEAVE: 55", 68" P.D.-10D
4 1/2" Bore
GEAR BOX OIL CAPACITY: 165 Gallons

1280D GEAR REDUCER:

RATING: 1,280,000 In. Lbs. Peak Torque
RATIO OF GEARS: 28.05
CRANKSHAFT DIA.: 8 1/2" (Mark II, 10 1/2")
SHEAVE: 36", 68" P.D.-10C
35", 68" P.D.-8D 4 1/2" Bore
GEAR BOX OIL CAPACITY: 120 Gallons

912D GEAR REDUCER:

RATING: 912,000 In. Lbs. Peak Torque
RATIO OF GEARS: 28.72
CRANKSHAFT DIA.: 7" (Mark II, 9",
Mark II, 912DS,
10 1/2")
SHEAVE: 33", 40", 48", 55.2" P.D.-6D
50", 55.2" P.D.-8C, 43 1/2" Bore
GEAR BOX OIL CAPACITY: 107 Gallons

640D GEAR REDUCER:

RATING: 640,000 In. Lbs. Peak Torque
RATIO OF GEARS: 28.6
CRANKSHAFT DIA.: 7" (Mark II, 9")
SHEAVE: 22", 27", 33", 48", 55.4" P.D.-
5D
24", 36", 44", 50", 55.6" P.D.-
6C
37 1/2" Bore
GEAR BOX OIL CAPACITY: 70 Gallons

456D GEAR REDUCER:

RATING: 456,000 In. Lbs. Peak Torque
RATIO OF GEARS: 29.04
CRANKSHAFT DIA.: 7" (Mark II, 9")
SHEAVE: 22", 27", 33", 48" P.D.-4D
24", 36", 44", 50" P.D.-6C
37 1/2" Bore
GEAR BOX OIL CAPACITY: 55 Gallons

320D GEAR REDUCER:

RATING: 320,000 In. Lbs. Peak Torque
RATIO OF GEARS: 30.12
CRANKSHAFT DIA.: 6 7/16" (Mark II, 8 1/2")
SHEAVE: 24", 30", 36", 44", 47" P.D.-5C
2 1/2" Bore
GEAR BOX OIL CAPACITY: 50 Gallons

228D GEAR REDUCER:

RATING: 228,000 In. Lbs. Peak Torque
RATIO OF GEARS: 28.45
CRANKSHAFT DIA.: 6" (Mark II, 7")
SHEAVE: 24", 30", 36", 41" P.D.-4C
27 1/2" Bore
GEAR BOX OIL CAPACITY: 34 Gallons

160D GEAR REDUCER:

RATING: 160,000 In. Lbs. Peak Torque
RATIO OF GEARS: 28.67
CRANKSHAFT DIA.: 5 7/16" (Mark II, 7")
SHEAVE: 20", 24", 30", 36", 38" P.D.-3C
23 1/2" Bore
GEAR BOX OIL CAPACITY: 22 Gallons

114D GEAR REDUCER:

RATING: 114,000 In. Lbs. Peak Torque
RATIO OF GEARS: 29.4
CRANKSHAFT DIA.: 4 7/16" (Mark II,
6 7/16")
SHEAVE: 20", 24", 30", 33.6" P.D.-2C
1 1/2" Bore
GEAR BOX OIL CAPACITY: 17 Gallons

80D GEAR REDUCER:

RATING: 80,000 In. Lbs. Peak Torque
RATIO OF GEARS: 29.15
CRANKSHAFT DIA.: 4 7/16"
SHEAVE: 20", 24", 30" P.D.-2C 1 1/2" Bore
GEAR BOX OIL CAPACITY: 17 Gallons

57D GEAR REDUCER:

RATING: 57,000 In. Lbs. Peak Torque
RATIO OF GEARS: 29.32
CRANKSHAFT DIA.: 4"
SHEAVE: 20", 24", 27" P.D.-2C
20", 25", 27.6" P.D.-3B, 1 1/2" Bore
GEAR BOX OIL CAPACITY: 13 Gallons

P57D GEAR REDUCER:

RATING: 57,000 In. Lbs. Peak Torque
RATIO OF GEARS: 29.55
CRANKSHAFT DIA.: 4"
SHEAVE: 24" P.D.-3B, 1 3/4 Bore
GEAR BOX OIL CAPACITY: 6 Gallons

40D GEAR REDUCER:

RATING: 40,000 In. Lbs. Peak Torque
RATIO OF GEARS: 29.2
CRANKSHAFT DIA.: 4"
SHEAVE: 20", 24" P.D.-2C
20", 23.3" P.D.-3B, 1 1/2" Bore
GEAR BOX OIL CAPACITY: 7 Gallons

P40D GEAR REDUCER:

RATING: 40,000 In. Lbs. Peak Torque
RATIO OF GEARS: 29.55
CRANKSHAFT DIA.: 4"
SHEAVE: 24" P.D.-2C, 1 3/4" Bore
GEAR BOX OIL CAPACITY: 6 Gallons

25D GEAR REDUCER:

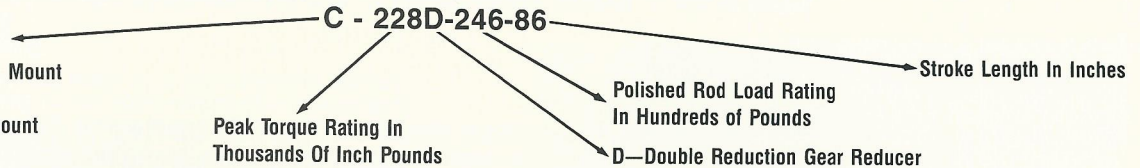
RATING: 25,000 In. Lbs. Peak Torque
RATIO OF GEARS: 28.9
CRANKSHAFT DIA.: 3"
SHEAVE: 18.4" P.D.-2B, 1 3/8" Bore
GEAR BOX OIL CAPACITY: 5 Gallons

16D GEAR REDUCER:

RATING: 16,000 In. Lbs. Peak Torque
RATIO OF GEARS: 35.7
CRANKSHAFT DIA.: 2 1/2"
SHEAVE: 15.3" P.D.-3A or 2B, 1 3/16" Bore
GEAR BOX OIL CAPACITY: 5 Gallons

EXPLANATION OF PUMPING UNIT DESIGNATIONS**Type Pumping Unit:**

A—Air Balanced
 B—Beam Balanced
 B-P—Beam Balanced Pin Mount
 C—Conventional
 C-P—Conventional Pin Mount
 M—Mark II Unitorque
 LP—Low Profile

**INSTRUCTIONS FOR ORDERING SPARE PARTS**

WARNING! - THE USE OF REPAIR OR REPLACEMENT PARTS ON A LUFKIN PUMPING UNIT THAT DO NOT MEET LUFKIN SPECIFICATIONS COULD RESULT IN SERIOUS INJURY TO PERSONNEL NEAR THE PUMPING UNIT.

WHEN ORDERING SPARE PARTS, THE DESIGNATION AND SERIAL NUMBER OF THE UNIT MUST BE GIVEN. This information is necessary in addition to the description of the part and part number, to assure that the correct part is furnished.

WARNING! - BEFORE PERFORMING MAINTENANCE OR INSPECTION ON THE PUMPING UNIT, BE CERTAIN THAT THE PRIME MOVER IS TURNED OFF, LOCKED IN THE "OFF" POSITION AND THAT IT IS SECURED AGAINST ROTATION. ANY MOVEMENT OF THE EQUIPMENT DURING MAINTENANCE OR INSPECTION PROCEDURES CAN CAUSE SERIOUS PERSONAL INJURY.

LUBRICATION INSTRUCTIONS**GEAR REDUCER:**

For temperatures down to 0°F use an AGMA No. 5EP (ISO VG 220) premium mild extreme pressure lubricant (preferably a sulphur-phosphorous type) with rust and oxidation inhibitors and an anti-foam agent. Pour point of the oil should be 5°F or lower.

For temperatures down to -30°F use an AGMA No. 4 EP (ISO VG 150) premium mild extreme pressure lubricant (preferably sulphur-phosphorous type) with rust and oxidation inhibitors and anti-foam agent. Pour point of the oil should be -15°F or less. Do not use multi-viscosity oils.

If desired, units can be shipped with the gear reducer filled with oil that will comply with the above specifications.

Maintain the oil level above the low mark on gage but do not fill the gear reducer above the high mark on gage.

Every six months the operator should collect a typical sample of the oil in a glass jar. A visual inspection will expose possible dirt, sludge, water emulsion or other forms of contamination. If the lubricant has an abnormal appearance or smell, check with your oil supplier about replacement.

STRUCTURAL BEARINGS

All structural bearings are lubricated at the factory; however, they do require periodic relubrication as outlined below.

1. WARM CLIMATES: (Lowest annual temperature is above 0°F.)

Roller Bearings except Tapered Roller Crank Pin Bearings should be relubricated every 6 months. Use a premium NLGI No. 1 lithium soap base grease with an extreme pressure additive. Do not use soda soap grease.

Bronze Bearings and Tapered Roller Crank Pin Bearings should be relubricated as required to maintain oil level. Use an EP140 extreme pressure oil with an extreme pressure additive and a pour point of +15°F or lower. If available, the use of a heavier oil (viscosity up to 6600 SUS at 100°F) is recommended.

2. COLD CLIMATES: (Lowest annual temperature down to -30°F.)

Roller Bearings except Tapered Roller Crank Pin Bearings should be relubricated every 6 months. Use a premium NLGI No. 0 lithium soap base grease with an extreme pressure additive. Do not use soda soap grease.

Bronze Bearings and Tapered Roller Crank Pin Bearings should be relubricated as required to maintain oil level by removing fill plug and adding oil until reservoir is full. Use an EP 80 or EP 90 extreme pressure oil with an extreme pressure additive and a pour point of -10°F or lower.

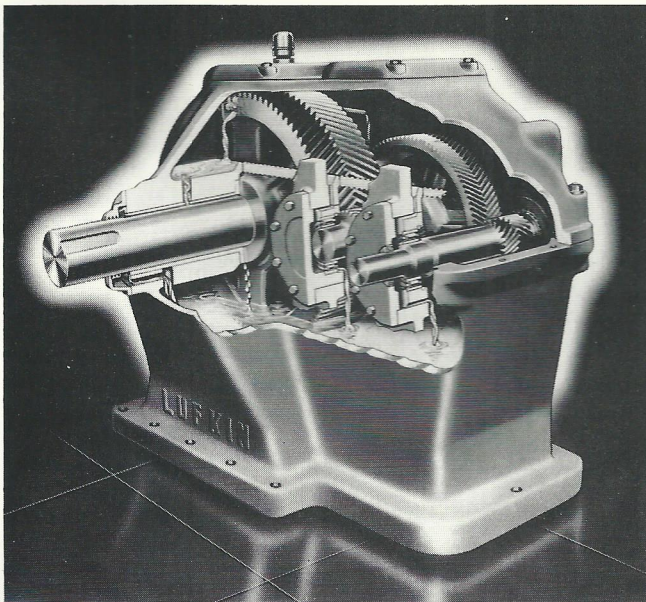
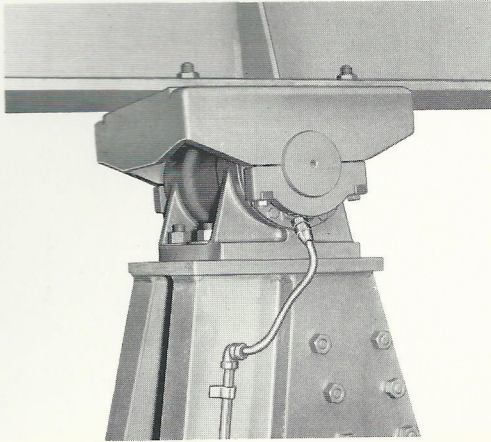


FIGURE 1

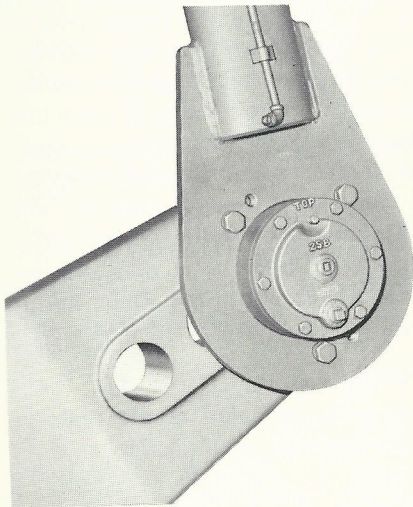
As long as the oil is maintained at the proper level, the slow speed and high speed gears dip in oil and provide continuous lubrication to the gear mesh.

Large oil wipers direct a flood of oil into oversized oil troughs which in turn provide each individual bearing with more than adequate lubrication.

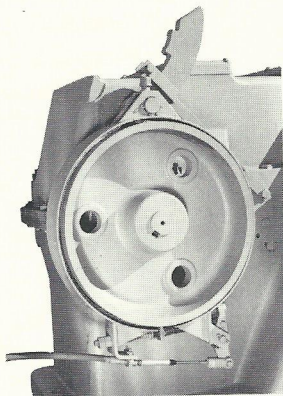
LUFKIN PUMPING UNIT COMPONENTS



**FIGURE 2
CENTER BEARING ASSEMBLY**
Furnished with roller bearings on some C-114D and all larger sizes.



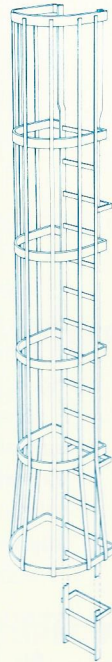
**FIGURE 3
CRANK PIN ASSEMBLY**
Furnished with roller bearings on some C-114D and all larger sizes.



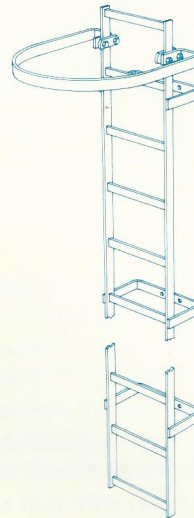
**FIGURE 4
FLEX-SHOE BRAKE**
Lufkin's Flex-Shoe brake provides much greater holding capacity than the Clam Shell type formerly used. Smoother acting with no "grabbing." Positive stop pawl can be engaged with notches in brake drum to provide additional safety. The pumping unit brake is not intended as a safety stop but is intended for operational stops only.

LUFKIN OFFERS LADDERS THAT CONFORM TO LUFKIN'S INTERPRETATION OF OSHA SPECIFICATIONS. WHEN ORDERING REQUEST THAT AN "OSHA" LADDER BE SUPPLIED.

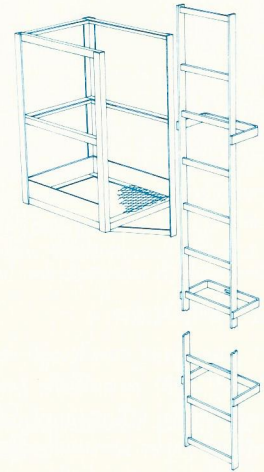
LADDER STYLES



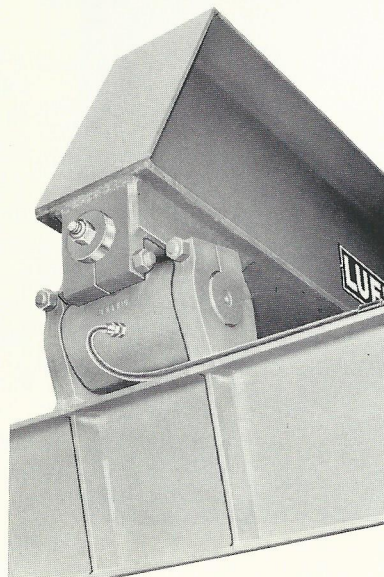
**FIGURE 5
CAGED LADDER**



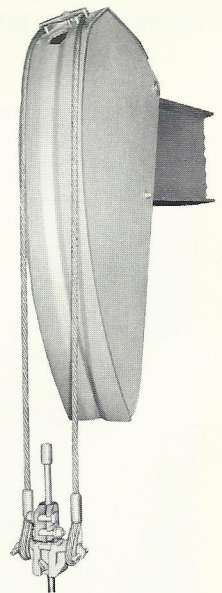
**FIGURE 6
PLAIN LADDER**



**FIGURE 7
PLATFORM LADDER**



**FIGURE 8
CRANK BALANCED UNIT EQUALIZER BEARING ASSEMBLY**
Furnished with roller bearings on all sizes. Cross-pin-type connection to walking beam is utilized.



**FIGURE 9
HORSEHEAD AND WIRE LINE ASSEMBLY**
Easily aligned with polished rod without disconnecting well load. One-piece arc plate is used for greater strength. With the exception of the "C-P" & "B-P" series, the 120" stroke length and less units are furnished with roll back horseheads for ease of well servicing.

COMPONENTS Continued

COUNTERBALANCE

As shown in Figure 11, a wide range of counterbalance is available on all LUFKIN units. With the various combinations of counterweights and auxiliary counterweights to choose from a very economical selection of counterbalance can be made.

The Trout Counterbalanced Crank, using sliding weights to change the counterbalance effect, is an Original Lufkin Feature. Moving the counterweights has been made even safer and easier by the addition of a rack and pinion.

One Man Alone, using the special combination pinion and crank shown in Figure 11, can make the adjustment in a matter of minutes. All four weights can be adjusted without changing the position of the cranks.

Rack and pinion type cranks are regularly furnished on the C-40D assemblies and larger.

With the Trout Counterbalanced Crank there is no hazard to the operator or equipment as it is impossible for Trout counterweights to slide off the crank even when bolts are loosened, so longer nuts are not completely removed from bolts.

This same Safe, Simple and Easy Trout Counterbalance has been in use over a period of many years and has been installed on over ONE HUNDRED AND NINETY TWO THOUSAND LUFKIN PUMPING UNITS.

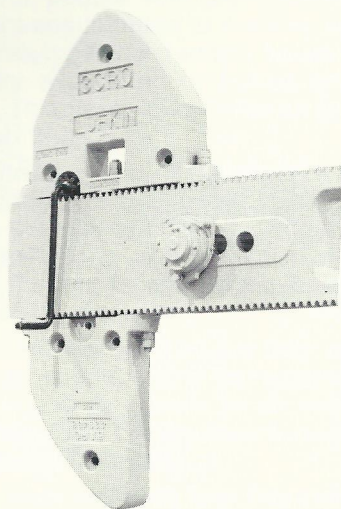


FIGURE 11
Illustrating the wide range of counterweight sizes which can be used on one crank. Different size counterweights are not normally furnished or recommended for the same unit.
NOTE: Removable pinion (with crank handle attached) is used to adjust all counterweights.

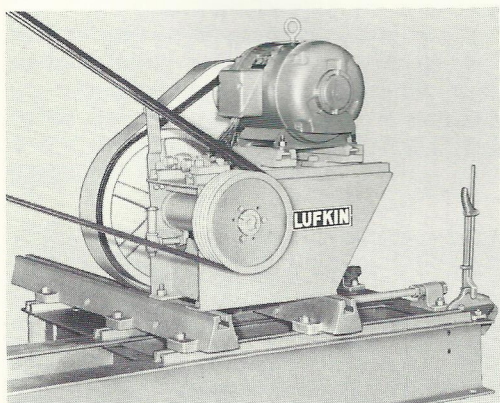


FIGURE 12

This assembly utilizes an electric motor and countershaft and provides a reduction ratio of up to 4:1. This compact reduction unit package will fit on conventional slide rails and was designed for use with single reduction gear reducers where slow pumping speeds are encountered. This type assembly is manufactured in two sizes: No. 1—25-50 HP, No. 2—up to 20 HP.



FIGURE 10

Two-point foundation reduces base stresses as well as installation costs and is easily transportable.

FOUNDATION ANCHOR NUTS

Suspended in concrete forms before foundation is poured.

Provides flush foundation. Wide foot at base of nut insures more than adequate holding power.

Available in the following sizes:

BOLT DIA.	Length
3/4"	6"
1"	10"
1 1/4"	12"
1 1/2"	12"

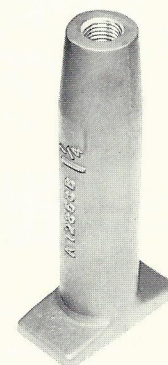


FIGURE 13

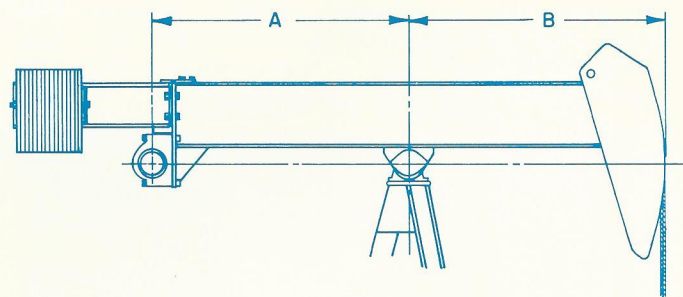


FIGURE 14

BEAM EXTENSIONS FOR EXTRA COUNTERBALANCE

These extensions are available for older units as well as current units. They are made in two sizes and can be adapted to crank balanced units now in service by burning 8 holes in the walking beam.

Extension	Max. Weight Added, Lbs.	Distance from Equalizer Bearing to Center of Weights	Max. Counterbalance Added, Lbs.*
48"	2600	28"	2600(A+28") ÷ B
60"	4000	40"	4000(A+40") ÷ B

* For the A and B dimensions refer to the General Dimensions Sheet of the particular unit in question.

CONVENTIONAL PUMPING UNIT AND PRIME MOVER BASES

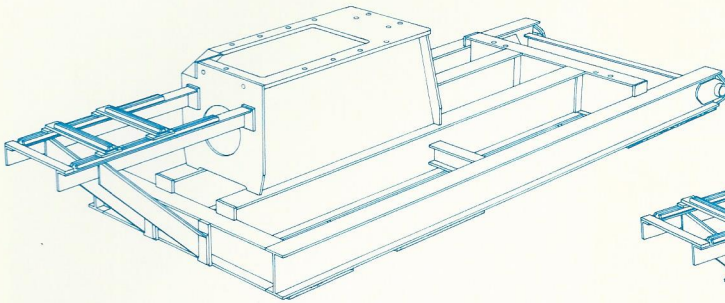


FIGURE 15
Wide Skid-UNISET base with Hi-Prime
bracket for Electric Motor

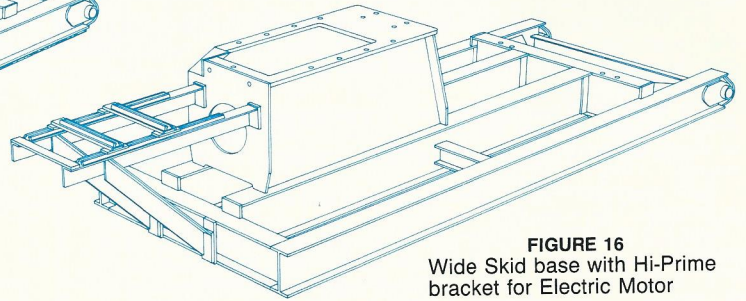


FIGURE 16
Wide Skid base with Hi-Prime
bracket for Electric Motor

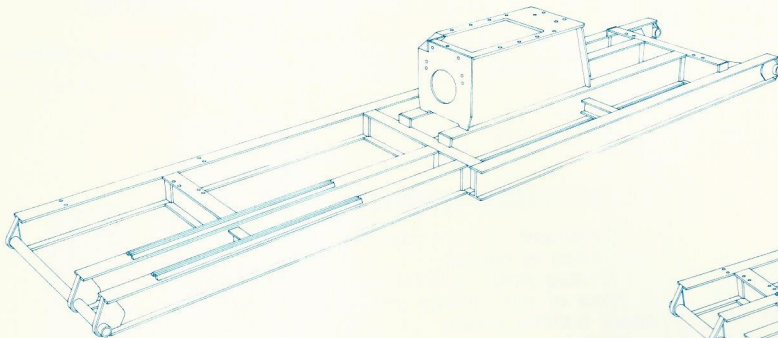


FIGURE 17
Wide Skid base for
Slow Speed Engine

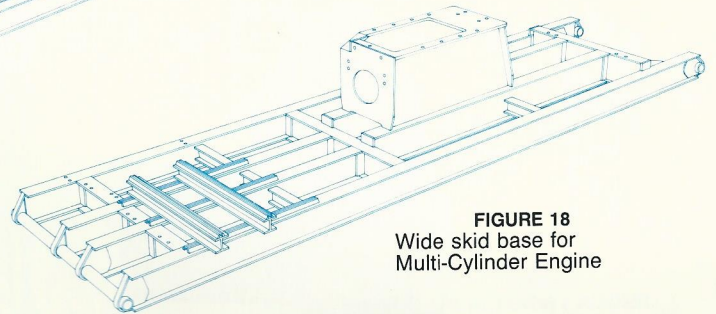


FIGURE 18
Wide skid base for
Multi-Cylinder Engine

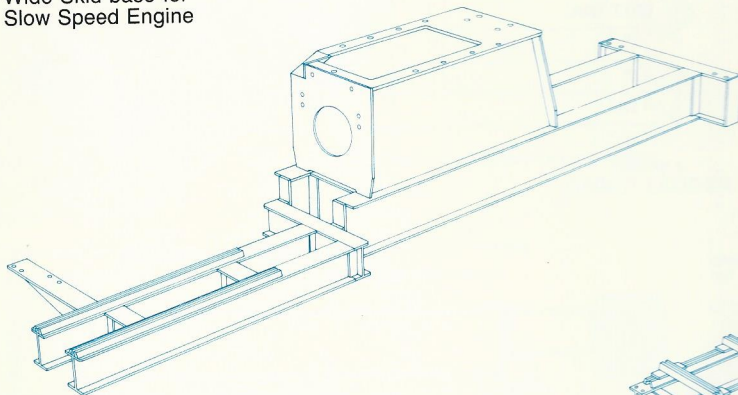


FIGURE 19
Jointed base for Slow Speed
Engine

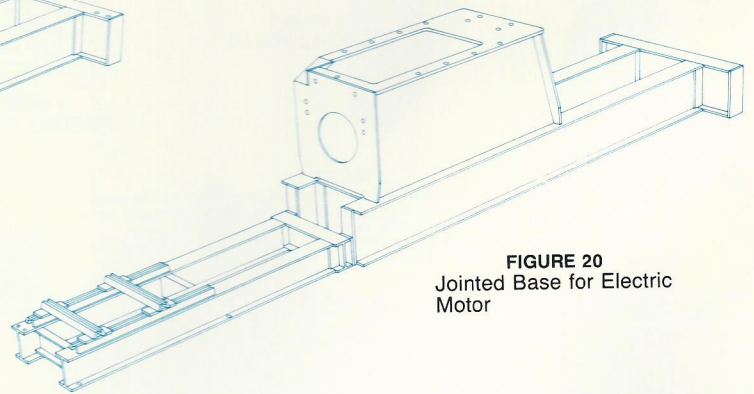


FIGURE 20
Jointed Base for Electric
Motor

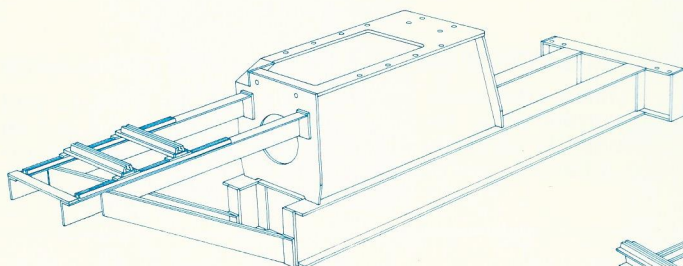


FIGURE 21
Stub Base with Hi-Prime
Bracket for Electric Motor

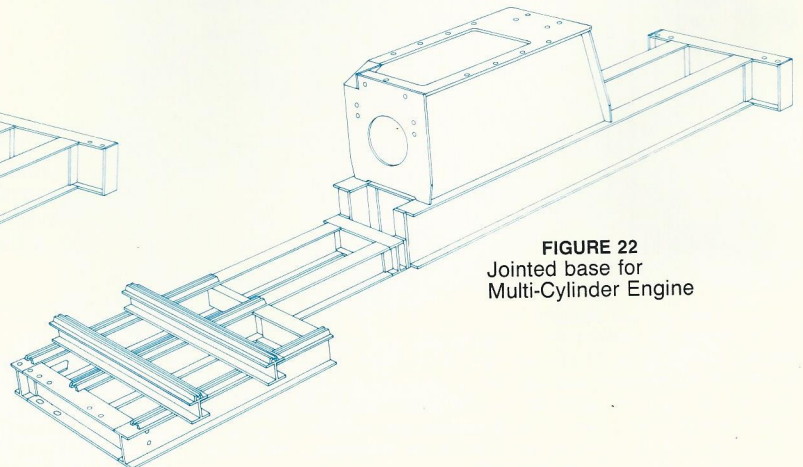


FIGURE 22
Jointed base for
Multi-Cylinder Engine

GUARDING OF PUMPING UNITS

WARNING: DO NOT OPERATE PUMPING UNITS UNLESS CRANK GUARDS AND ANY OTHER NEEDED GUARDS ARE IN PLACE. ROTATING PARTS ARE DANGEROUS TO PERSONNEL.

WARNING: GUARDING OF PUMPING UNITS

Your LUFKIN pumping unit contains a number of heavy rotating and moving parts which constitute a safety hazard if not properly guarded. As a service to the user of our pumping units, we offer several types of crank guards which may be required to be in the vicinity of the operating pumping unit. Under normal operating circumstances, the rail-type guards (Figure 24) would be considered minimum guarding for people who are familiar with pumping units and are accustomed to working around them. Basically, the rail-type guard simply keeps workers from accidentally wandering or falling into the sweep of the cranks. This guard is available as an open rail or with wire mesh.

The 62 and 84 inch wire mesh crank guards (Figure 25) would normally be considered adequate guarding for people familiar with the operation of a pumping unit and accustomed to working around it, as well as smaller animals which might be able to move through the guard rails described above.

When pumping units are operated where they are accessible to the general public, it may be necessary to place the pumping unit with guards in an enclosed area with a locked entrance. The enclosure must prevent entry of unauthorized persons.

The location of the pumping unit, and therefore the type of guarding needed, is known only by the user who must choose the appropriate guarding. LUFKIN offers the above types of guarding and will custom build guards to customer's specifications if so requested. Regardless of who supplies the guards, appropriate guards must be in place and adequately maintained on all pumping units to prevent the risk of serious injury or death to people in the vicinity of the operating pumping unit. Minimum guarding required to be furnished by the user is described in API RP 11ER, RECOMMENDED PRACTICE FOR GUARDING OF PUMPING UNITS.

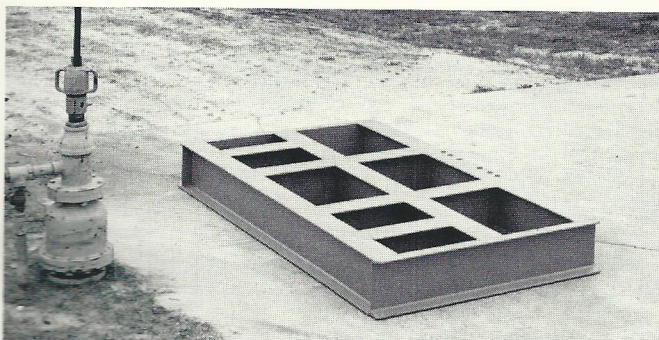


FIGURE 23

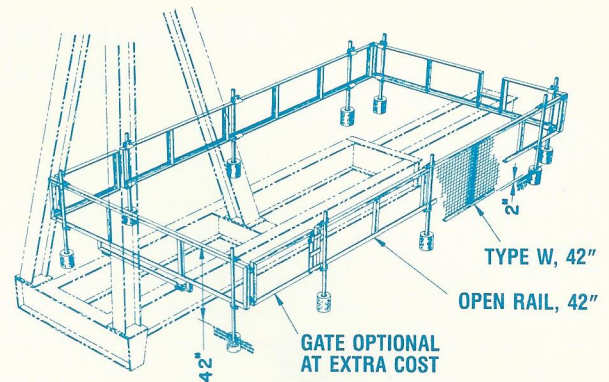


FIGURE 24
42" OPEN RAIL & TYPE W CRANK GUARDS

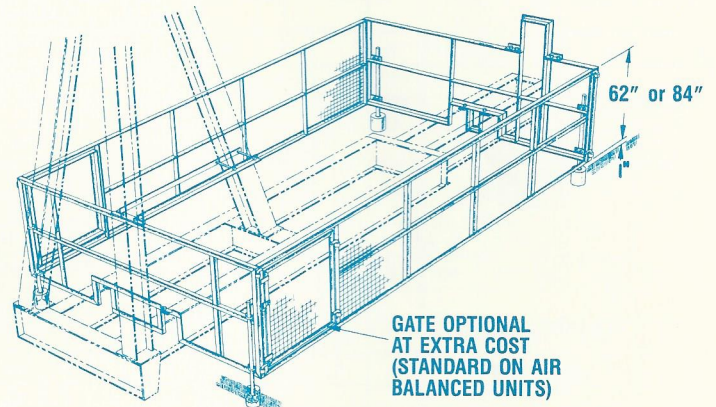


FIGURE 25
62" & 84" TYPE W CRANK GUARDS

42" Open rail type and TYPE W, 42" crank guards are available from stock for all Lufkin Units. No holes required in Base or Post—clamps to top flange of Base and to Post—and can be fitted to any Lufkin unit. Sides are hinged and can be easily removed. TYPE W, guards are 2 x 2 wire mesh with angle rails. Lufkin also offers horsehead (see Figure 26) and engine flywheel guards as an option when required.

HORSEHEAD GUARDS

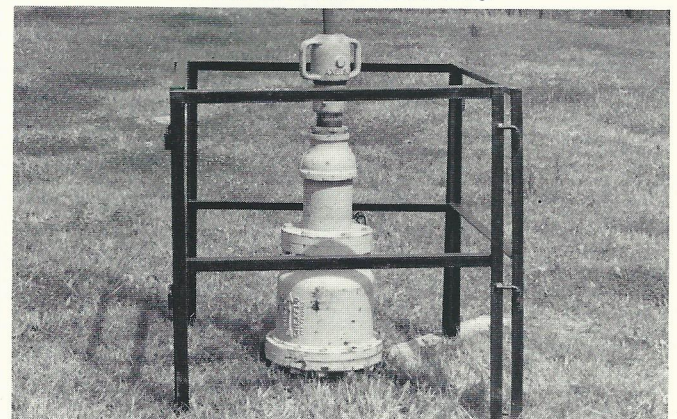


FIGURE 26

FABRICATED FOUNDATION PADS

Fabricated foundation pads (see Figure 23) are available for use with all Mark II units and those conventional units designed for "two point" mounting. The lightweight portable fabricated pads can be shipped with the pumping unit as a convenience and cost saving feature to the customer. Once the pads are in place they are filled with crushed rock or sand to add stabilizing weight.

**TWO POINT
CONVENTIONAL PUMPING UNIT ASSEMBLIES
GENERAL DIMENSIONS**

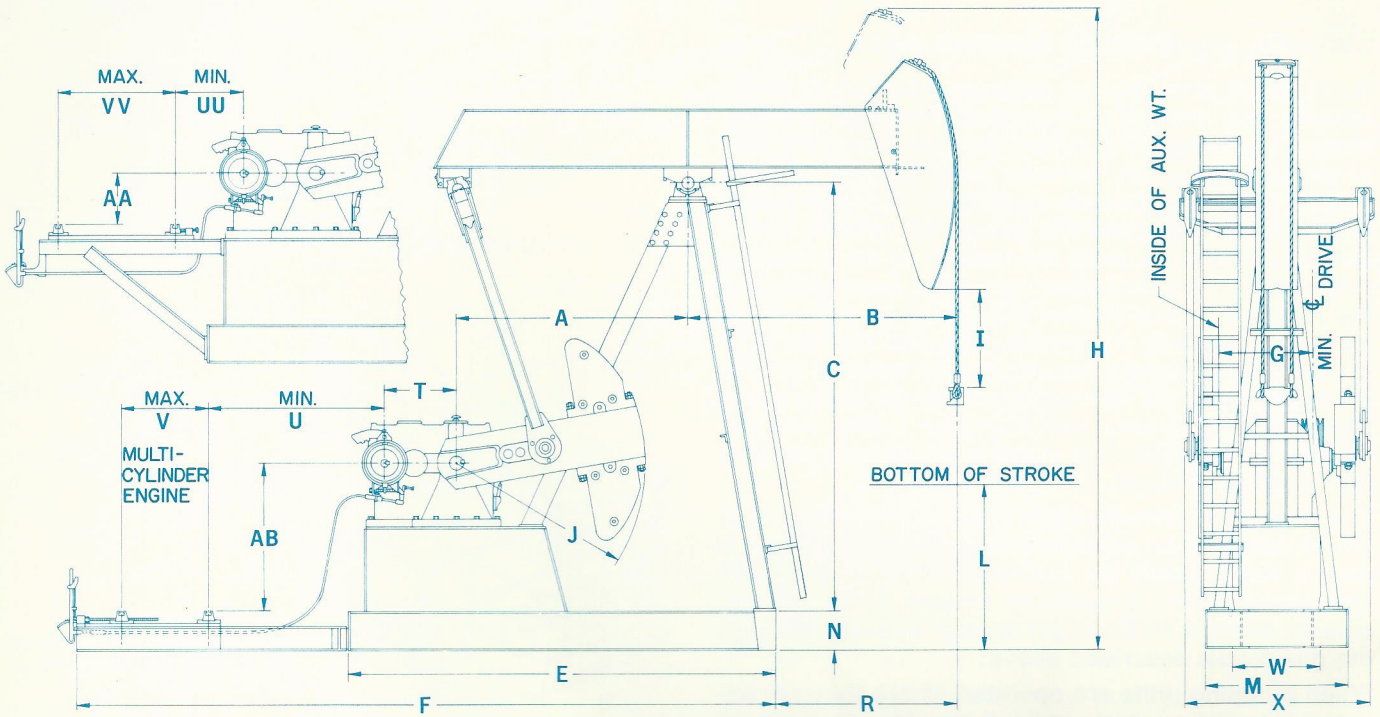


FIGURE 27

UNIT	A	B	C	E	F	G	H	I	J	L	M	N	R	T	U	V	W	X	AA	AB	UU	VV
C-912D-365-168	10'-0"	17'-6"	19'-9 ⁷ / ₈ "	18'-8 ¹ / ₂ "	29'-9 ¹ / ₂ "	53 ¹ / ₈ "	35'-1 ¹ / ₂ "	20 ¹ / ₂ "	110"	62 ¹ / ₄ "	6'-4"	24 ¹ / ₈ "	13'-10 ¹ / ₂ "	48 ¹ / ₂ "	87 ¹ / ₂ "	52"	46 ³ / ₄ "	8'-2 ¹ / ₂ "	51 ³ / ₄ "	90 ⁷ / ₈ "	19 ¹ / ₄ "	57"
C-912D-305-168	"	"	"	"	"	"	"	"	"	62"	"	"	"	"	"	"	"	"	"	"	"	"
C-912D-427-144	"	15'-0"	"	"	"	"	33'-4"	32 ³ / ₄ "	"	74 ¹ / ₄ "	"	"	11'-4 ¹ / ₂ "	"	"	"	"	"	"	"	"	"
C-912D-365-144	"	"	"	"	"	"	"	"	"	"	"	"	"	"	"	"	"	"	"	"	"	"
C-640D-365-168	"	17'-6"	"	18'-5"	29'-6"	53 ¹ / ₈ "	35'-1 ¹ / ₂ "	20 ¹ / ₂ "	"	62 ¹ / ₄ "	"	"	13'-10 ¹ / ₂ "	41 ¹ / ₂ "	91"	"	"	"	"	"	23"	"
C-640D-305-168	"	"	"	"	"	"	"	"	"	"	"	"	"	"	"	"	"	"	"	"	"	"
C-640D-365-144	"	15'-0"	"	"	"	"	33'-4"	32 ³ / ₄ "	"	74 ¹ / ₄ "	"	"	11'-4 ¹ / ₂ "	"	"	"	"	"	"	"	"	"
C-640D-305-144	"	"	19'-10 ⁷ / ₈ "	18'-4 ³ / ₄ "	29'-5 ³ / ₄ "	"	33'-2"	"	"	72 ¹ / ₂ "	"	21 ¹ / ₈ "	11'-4 ⁷ / ₈ "	"	91 ¹ / ₈ "	"	"	"	"	"	"	"
C-640D-256-144	"	"	"	"	"	"	"	"	"	"	"	"	"	"	"	"	"	"	"	"	"	"
C-640D-305-120	9'-3"	12'-11"	17'-9"	17'-4 ⁵ / ₈ "	27'-2 ⁵ / ₈ "	52 ¹ / ₂ "	29'-3"	25"	95"	78 ¹ / ₄ "	70"	21"	9'-6 ⁷ / ₈ "	"	76"	"	"	8'-1"	51 ¹ / ₈ "	75 ⁷ / ₈ "	26 ³ / ₄ "	37 ³ / ₄ "
C-456D-305-168	10'-0"	17'-6"	19'-9 ⁷ / ₈ "	18'-5"	29'-6"	53 ¹ / ₈ "	35'-1 ¹ / ₂ "	20 ¹ / ₂ "	110"	62 ¹ / ₄ "	6'-4"	24 ¹ / ₈ "	13'-10 ¹ / ₂ "	38 ³ / ₈ "	94 ¹ / ₈ "	"	"	8'-2 ¹ / ₂ "	51 ³ / ₄ "	90 ⁷ / ₈ "	26 ¹ / ₈ "	57"
C-456D-305-144	"	15'-0"	19'-10 ⁷ / ₈ "	18'-4 ³ / ₄ "	29'-5 ³ / ₄ "	"	33'-2"	32 ³ / ₄ "	"	72 ¹ / ₂ "	"	21 ¹ / ₈ "	11'-4 ⁷ / ₈ "	"	94 ¹ / ₄ "	"	"	"	"	"	"	"
C-456D-256-144	"	"	"	"	"	"	"	"	"	"	"	"	"	"	"	"	"	"	"	"	"	"
C-456D-365-120	"	12'-8"	"	"	"	"	31'-7"	54 ¹ / ₂ "	"	75 ¹ / ₂ "	"	"	9'-0 ⁷ / ₈ "	"	"	"	"	"	"	"	"	"
C-456D-305-120	9'-3"	12'-11"	17'-9"	17'-4 ⁵ / ₈ "	27'-2 ⁵ / ₈ "	52 ¹ / ₂ "	29'-3"	25"	95"	78 ¹ / ₄ "	70"	21"	9'-6 ⁷ / ₈ "	"	79 ¹ / ₈ "	"	"	8'-1"	51 ¹ / ₈ "	75 ⁷ / ₈ "	29 ⁷ / ₈ "	37 ³ / ₄ "
C-456D-256-120	"	"	17'-7"	"	"	"	29'-1"	"	"	76"	"	"	"	"	"	"	"	"	"	"	"	"
C-456D-213-120	"	"	"	"	"	"	"	"	"	"	"	"	"	"	"	"	"	"	"	"	"	"
C-456D-256-100	"	10'-9"	"	"	"	"	27'-6 ¹ / ₂ "	45 ³ / ₄ "	"	75 ³ / ₄ "	"	"	7'-4 ⁷ / ₈ "	"	"	"	"	"	"	"	"	"

NOTE: Do not use above dimensions for foundation. Request foundation plan.

GENERAL DIMENSIONS Continued

UNIT	A	B	C	E	F	G	H	I	J	L	M	N	R	T	U	V	W	X	AA	AB	UU	VV	
C-320D-256-144	10'-0"	15'-0"	19'-10 ⁷ / ₈ "	17'-11 ¹ / ₄ "	29'-5 ³ / ₄ "	44 ³ / ₄ "	33'-2"	32 ³ / ₄ "	110"	72 ¹ / ₂ "	6'-4"	21 ¹ / ₈ "	11'-4 ⁷ / ₈ "	34"	8'-2 ⁵ / ₈ "	52"	43"	7'-3 ¹ / ₂ "	53 ⁵ / ₈ "	93"	31"	48 ¹ / ₄ "	
C-320D-256-120	9'-3"	12'-11"	17'-7"	16'-11 ¹ / ₈ "	27'-3 ¹ / ₈ "	"	29'-1"	25"	95"	76"	70"	21"	9'-6 ⁷ / ₈ "	"	6'-11 ¹ / ₂ "	53"	"	7'-1 ¹ / ₂ "	54"	79"	"	33 ¹ / ₄ "	
C-320D-213-120	"	"	"	"	"	"	"	"	"	"	"	"	"	"	"	"	"	"	"	"	"	"	"
C-320D-305-100	"	10'-9"	"	"	"	"	27'-6 ¹ / ₂ "	45 ³ / ₄ "	"	"	"	"	7'-4 ⁷ / ₈ "	"	"	"	"	"	"	"	"	"	"
C-320D-256-100	"	"	"	"	"	"	"	"	"	"	"	"	"	"	"	"	"	"	"	"	"	"	"
C-320D-246-86	"	9'-3"	"	"	"	"	26'-5 ¹ / ₂ "	59 ³ / ₄ "	"	75 ³ / ₄ "	"	"	70 ⁷ / ₈ "	"	"	"	"	"	"	"	"	"	"
C-320D-213-86	8'-0"	"	15'-0"	15'-3 ¹ / ₂ "	24'-2 ¹ / ₂ "	45 ¹ / ₄ "	23'-6"	23 ³ / ₄ "	78"	75"	57 ³ / ₄ "	16 ¹ / ₈ "	6'-3 ¹ / ₂ "	"	66 ¹ / ₂ "	"	"	"	37 ¹ / ₈ "	62 ¹ / ₈ "	30 ⁷ / ₈ "	"	
C-320D-246-74	"	8'-0"	"	"	"	"	22'-7"	35 ¹ / ₂ "	"	77 ³ / ₄ "	"	"	60 ¹ / ₂ "	"	"	"	"	"	"	"	"	"	"
C-228D-213-120	9'-3"	12'-11"	17'-7"	16'-4 ¹ / ₈ "	27'-2 ⁵ / ₈ "	38 ⁵ / ₈ "	29'-1"	25 ¹ / ₈ "	95"	76"	70"	21"	9'-6 ⁷ / ₈ "	30"	87"	"	37"	6'-6 ¹ / ₂ "	54"	79"	28"	"	
C-228D-213-100	8'-0"	10'-9"	15'-0"	14'-8 ¹ / ₂ "	24'-2"	39 ¹ / ₈ "	24'-7"	21 ³ / ₄ "	78"	63"	59 ³ / ₄ "	16 ¹ / ₈ "	7'-9 ¹ / ₂ "	"	70"	"	"	"	37 ¹ / ₈ "	62 ¹ / ₈ "	27 ⁷ / ₈ "	"	
C-228D-173-100	"	"	"	"	"	"	"	"	"	"	"	"	"	"	"	"	"	"	"	"	"	"	"
C-228D-246-86	9'-3"	9'-3"	17'-7"	16'-4 ¹ / ₈ "	27'-2 ⁵ / ₈ "	38 ⁵ / ₈ "	26'-5 ¹ / ₂ "	59 ³ / ₄ "	95"	75 ³ / ₄ "	70"	21"	70 ⁷ / ₈ "	"	87"	"	"	"	54"	79"	28"	"	
C-228D-213-86	8'-0"	"	15'-0"	14'-8 ¹ / ₂ "	24'-2"	39 ¹ / ₈ "	23'-6"	23 ³ / ₄ "	78"	75"	59 ³ / ₄ "	16 ¹ / ₈ "	6'-3 ¹ / ₂ "	"	70"	"	"	"	37 ¹ / ₈ "	62 ¹ / ₈ "	27 ⁷ / ₈ "	"	
C-228D-200-74	"	8'-0"	"	"	"	"	22'-7"	35 ⁵ / ₈ "	"	77 ¹ / ₄ "	"	"	60 ¹ / ₂ "	"	"	"	"	"	"	"	"	"	"
C-228D-173-74	7'-0"	"	12'-8 ³ / ₈ "	13'-4"	22'-9 ¹ / ₂ "	"	20'-3"	16 ³ / ₄ "	68"	68 ³ / ₄ "	51 ³ / ₄ "	15 ¹ / ₈ "	65"	"	"	"	"	"	27 ¹ / ₄ "	52 ¹ / ₄ "	"	"	
C-160D-173-100	8'-0"	10'-9"	15'-0"	14'-4"	24'-0"	33 ¹ / ₈ "	24'-7"	21 ¹ / ₂ "	78"	62 ³ / ₄ "	57 ³ / ₄ "	"	7'-9 ¹ / ₂ "	26"	74 ¹ / ₂ "	50"	32"	70 ¹ / ₂ "	37 ¹ / ₈ "	62 ⁷ / ₈ "	26 ⁵ / ₈ "	34 ³ / ₄ "	
C-160D-173-86	"	9'-3"	"	"	"	"	23'-6"	23 ³ / ₄ "	"	74 ⁷ / ₈ "	"	"	6'-3 ¹ / ₂ "	"	"	"	"	"	"	"	"	"	"
C-160D-200-74	"	8'-0"	"	"	"	"	22'-7"	35 ¹ / ₄ "	"	77 ¹ / ₄ "	"	"	60 ¹ / ₂ "	"	"	"	"	"	"	"	"	"	"
C-160D-173-74	7'-0"	"	12'-8 ³ / ₈ "	12'-11 ¹ / ₂ "	21'-8 ¹ / ₂ "	"	20'-3"	16 ³ / ₄ "	68"	68 ³ / ₄ "	51 ³ / ₄ "	"	65"	"	63 ¹ / ₂ "	"	"	"	23 ⁵ / ₈ "	53 ¹ / ₄ "	"	"	
C-160D-143-74	"	"	12'-6 ¹ / ₈ "	"	"	"	20'-1"	"	"	66"	"	"	"	"	"	"	"	"	"	"	"	"	"
C-160D-173-64	"	7'-0"	"	"	"	"	19'-4 ¹ / ₂ "	26"	"	67"	"	"	53"	"	"	"	"	"	69 ³ / ₄ "	"	"	"	"
C-160D-143-64	6'-0"	"	11'-0"	11'-13 ⁴ / ₄ "	18'-11 ³ / ₄ "	"	17'-6"	18"	56"	53 ³ / ₄ "	50 ³ / ₄ "	12 ¹ / ₄ "	62 ³ / ₄ "	"	52 ¹ / ₂ "	"	"	"	28 ³ / ₄ "	41 ¹ / ₄ "	17 ¹ / ₈ "	30 ¹ / ₄ "	
C-114D-119-86	7'-0"	9'-3"	12'-6 ¹ / ₈ "	12'-6"	22'-2"	29 ³ / ₈ "	21'-0"	14 ³ / ₄ "	68"	54 ¹ / ₂ "	51 ³ / ₄ "	15 ¹ / ₈ "	6'-8"	24"	71"	"	25"	66 ³ / ₄ "	27 ¹ / ₂ "	53 ¹ / ₄ "	23 ¹ / ₈ "	34 ³ / ₄ "	
C-114D-143-74	"	8'-0"	"	"	"	"	20'-1"	16 ³ / ₄ "	"	66 ¹ / ₂ "	"	"	65"	"	"	"	"	"	"	"	"	"	"
C-114D-173-64	"	7'-0"	"	"	"	"	19'-4 ¹ / ₂ "	26 ¹ / ₈ "	"	67"	"	"	53"	"	"	"	"	"	"	"	"	"	"
C-114D-143-64	6'-0"	"	11'-0"	10'-8 ¹ / ₄ "	18'-10 ¹ / ₄ "	"	17'-6"	18 ¹ / ₈ "	58"	53 ³ / ₄ "	50 ³ / ₄ "	12 ¹ / ₄ "	62 ³ / ₄ "	"	53"	"	"	"	28 ³ / ₄ "	41 ¹ / ₄ "	13 ⁵ / ₈ "	30 ¹ / ₄ "	
C-114D-173-54	"	6'-0"	"	"	"	"	16'-9"	19 ³ / ₈ "	"	62 ¹ / ₄ "	"	"	50 ³ / ₄ "	"	"	"	"	"	"	"	"	"	"

NOTE: Do not use above dimensions for foundation. Request foundation plan.

**CONVENTIONAL PUMPING UNIT ASSEMBLIES
GENERAL DIMENSIONS**

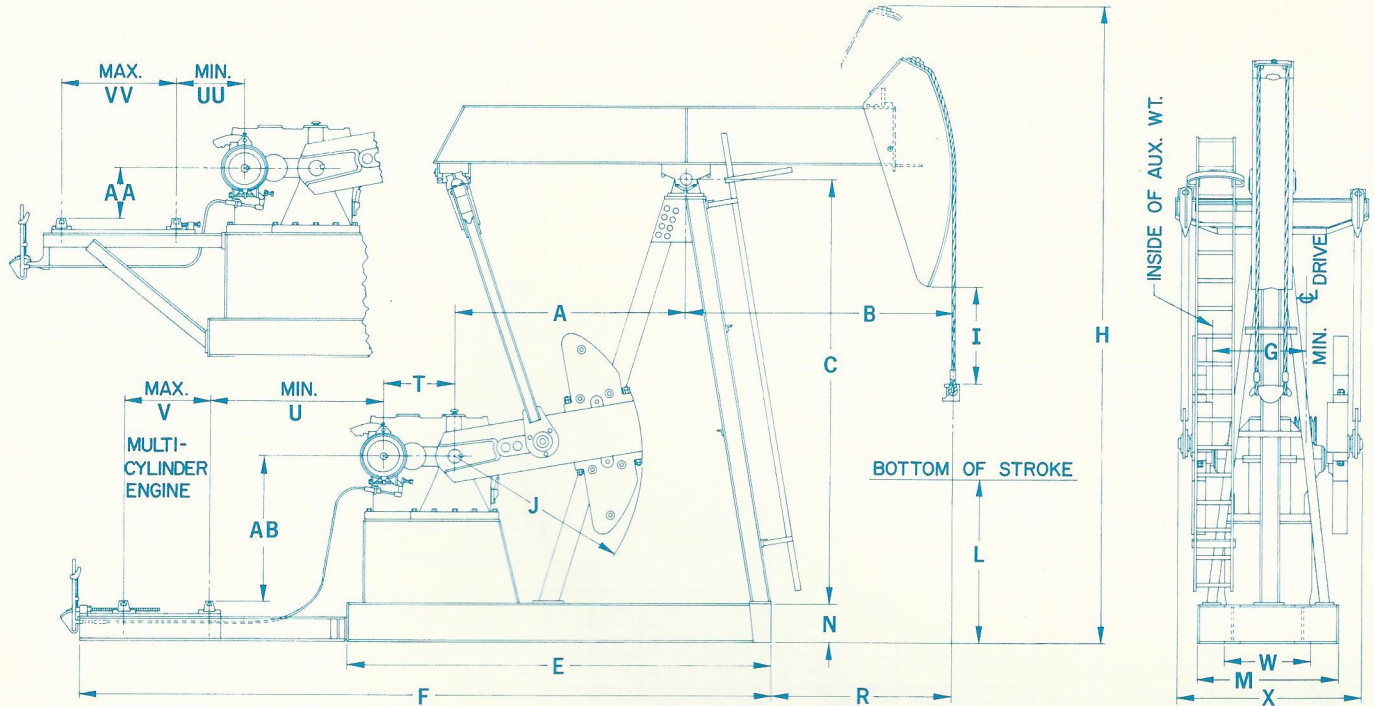


FIGURE 28

UNIT	A	B	C	E	F	G	H	I	J	L	M	N	R	T	U	V	W	X	AA	AB	UU	VV
C-114D-133-54	5'-4"	6'-0"	9'-8"	9'-11 ⁷ / ₈ "	17'-9 ⁷ / ₈ "	29 ³ / ₈ "	15'-3"	13 ¹ / ₂ "	50"	49 ⁷ / ₈ "	47"	10 ¹ / ₈ "	51 ¹ / ₈ "	24"	49"	50"	25"	67 ¹ / ₄ "	22 ⁵ / ₈ "	35 ¹ / ₈ "	13 ¹ / ₂ "	30 ¹ / ₄ "
C-80D-119-64	"	7'-0"	"	"	"	"	15'-11 ¹ / ₂ "	13 ¹ / ₄ "	"	40 ³ / ₈ "	"	"	63 ¹ / ₈ "	"	"	"	"	"	"	"	"	"
C-80D-133-54	"	6'-0"	"	"	"	"	15'-3"	13 ¹ / ₂ "	"	49 ⁷ / ₈ "	"	"	51 ¹ / ₈ "	"	"	"	"	"	"	"	"	"
C-80D-119-54	"	"	"	"	"	"	"	"	"	"	"	"	"	"	"	"	"	"	"	"	"	"
C-80D-133-48	"	5'-4"	"	"	"	"	14'-9"	14 ⁵ / ₈ "	"	54 ⁷ / ₈ "	"	"	43 ¹ / ₈ "	"	"	"	"	"	"	"	"	"
C-80D-109-48	4'-8"	"	8'-9"	9'-3 ⁷ / ₈ "	16'-8 ³ / ₈ "	30 ⁵ / ₈ "	13'-10 ¹ / ₄ "	"	46"	44"	40 ³ / ₄ "	"	"	"	45 ¹ / ₂ "	"	"	65 ¹ / ₄ "	18 ⁵ / ₈ "	31 ¹ / ₈ "	"	"
C-57D-76-54	"	6'-0"	"	"	"	26"	14'-4"	13 ⁵ / ₈ "	"	38 ⁷ / ₈ "	"	"	51 ¹ / ₈ "	20"	47 ¹ / ₂ "	"	"	58 ¹ / ₄ "	"	"	17 ¹ / ₂ "	"
C-57D-109-48	"	5'-4"	"	"	"	"	13'-10 ¹ / ₄ "	16"	"	42 ³ / ₄ "	"	"	43 ¹ / ₈ "	"	"	"	"	"	"	"	"	"
C-57D-95-48	"	"	"	"	"	"	"	"	"	"	"	"	"	"	"	"	"	"	"	"	"	"
C-57D-89-42	4'-0"	4'-8"	8'-2 ¹ / ₂ "	8'-2"	15'-6 ¹ / ₂ "	28 ¹ / ₄ "	12'-8"	16 ³ / ₈ "	44"	42"	38 ¹ / ₂ "	8 ¹ / ₈ "	41"	"	"	"	"	58"	16 ⁵ / ₈ "	29 ¹ / ₈ "	"	"
C-57D-76-42	"	"	"	"	"	"	"	"	"	"	"	"	"	"	"	"	"	"	"	"	"	"
C-40D-76-48	"	5'-4"	"	7'-9"	15'-0"	23 ³ / ₄ "	13'-2"	14 ⁵ / ₈ "	"	35 ⁵ / ₈ "	"	"	49"	17 ¹ / ₂ "	47"	46 ³ / ₄ "	20"	51"	10 ³ / ₄ "	35 ⁷ / ₈ "	17"	21 ¹ / ₄ "
C-40D-89-42	"	4'-8"	"	"	"	"	12'-8"	16 ³ / ₈ "	"	42"	"	"	41"	"	"	"	"	51 ¹ / ₄ "	"	"	"	"
C-40D-76-42	"	"	"	"	"	"	"	"	"	"	"	"	"	"	"	"	"	"	"	"	"	"
C-40D-89-36	"	4'-0"	"	"	"	"	12'-2"	12 ³ / ₄ "	"	51 ¹ / ₈ "	"	"	33"	"	"	"	"	"	"	"	"	"
C-25D-67-36	"	"	"	7'-4"	"	20 ¹ / ₄ "	12'-13 ⁴ / ₈ "	13"	"	50 ⁷ / ₈ "	"	"	"	13 ⁹ / ₁₆ "	50 ¹ / ₂ "	47 ⁷ / ₈ "	17"	47"	"	"	15 ¹ / ₂ "	"
C-25D-56-36	"	"	"	"	"	"	"	"	"	"	"	"	"	"	"	"	"	"	"	"	"	"
C-25D-67-30	3'-0"	3'-9"	7'-0 ¹ / ₂ "	6'-3"	13'-11"	20 ¹ / ₂ "	10'-9"	15 ¹ / ₂ "	36"	36 ⁵ / ₈ "	31"	6"	31"	"	"	"	"	"	"	27 ³ / ₄ "	"	"
C-25D-53-30	"	"	"	"	"	"	"	"	"	"	"	"	"	"	"	"	"	"	"	"	"	"

NOTE: Do not use above dimensions for foundation. Request foundation plan.

CONVENTIONAL (C-P) PUMPING UNIT ASSEMBLIES

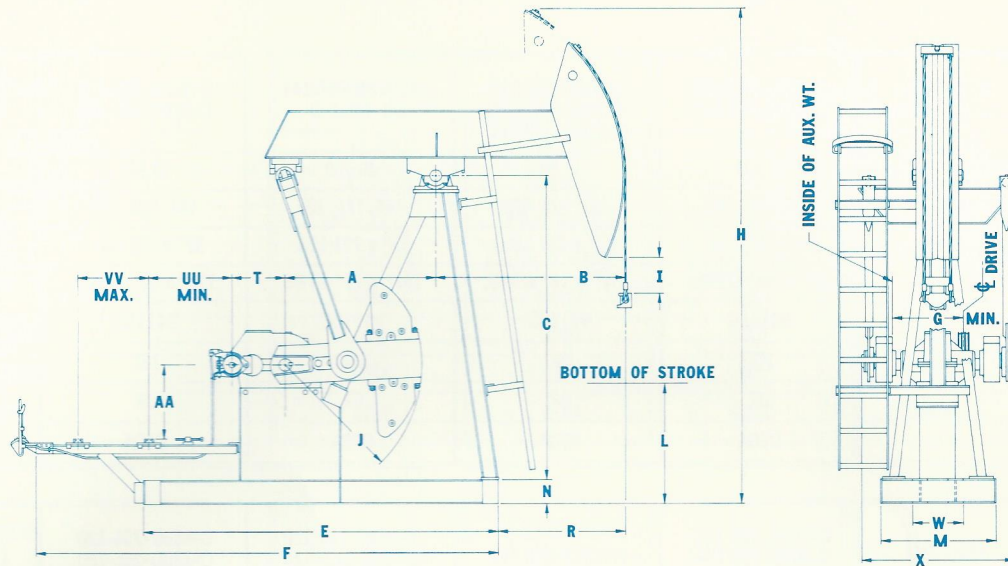


FIGURE 29

GENERAL DIMENSIONS

UNIT	A	B	C	E	F	G	H	I	J	L	M	N	R	T	W	X	AA	UU	VV
C-P57D-89-54	4'-3"	5'-4"	8'-7"	10'-0"	12'-7 ⁵ / ₈ "	21"	14'-5"	9"	46"	38 ³ / ₄ "	39"	8 ¹ / ₈ "	43 ³ / ₁₆ "	17 ³ / ₄ "	17 ¹ / ₄ "	52"	25 ¹ / ₂ "	28 ³ / ₈ "	26 ³ / ₄ "
C-P57D-76-54	"	"	"	"	"	"	"	"	"	"	"	"	"	"	"	"	"	"	"
C-P57D-109-48	"	4'-9"	"	"	"	"	13'-11"	12"	42 ¹ / ₂ "	"	"	"	36 ³ / ₁₆ "	"	"	"	"	"	"
C-P57D-95-48	"	"	"	"	"	"	"	"	"	"	"	"	"	"	"	"	"	"	"
C-P57D-89-42	"	4'-3"	"	"	"	"	13'-5"	9"	51 ¹ / ₂ "	"	"	"	30 ³ / ₁₆ "	"	"	"	"	"	"
C-P57D-76-42	"	"	"	"	"	"	"	"	"	"	"	"	"	"	"	"	"	"	"
C-P40D-76-48	3'-11"	5'-1"	7'-11"	"	"	"	13'-6 ¹ / ₂ "	10"	36 ¹ / ₂ "	"	"	"	36 ³ / ₁₆ "	"	"	"	"	"	"
C-P40D-89-42	"	4'-5"	"	"	"	"	12'-9"	"	42 ¹ / ₂ "	"	"	"	28 ³ / ₁₆ "	"	"	"	"	"	"
C-P40D-76-42	"	"	"	"	"	"	"	"	"	"	"	"	"	"	"	"	"	"	"
C-P40D-89-36	"	3'-11"	"	"	"	"	12'-3"	11"	47 ¹ / ₂ "	"	"	"	22 ³ / ₁₆ "	"	"	"	"	"	"

STRUCTURAL DATA

UNIT	C-P57D-89-54	C-P57D-76-54	C-P57D-109-48	C-P57D-95-48	C-P40D-76-48
POLISH ROD CAPACITY, LBS.	8900	7600	10,900	9500	7600
STROKE LENGTHS, INCHES.	54", 40", 27"	54", 41", 28"	48", 36", 24"	48", 36", 24"	48", 36", 26"
WALKING BEAM	16" x 36 Lbs.	16" x 36 Lbs.	16" x 45 Lbs.	16" x 36 Lbs.	16" x 36 Lbs.
WIRELINE HANGER	7/8" x 9" CTRS.	7/8" x 9" CTRS.	7/8" x 9" CTRS.	7/8" x 9" CTRS.	7/8" x 9" CTRS.
CRANKS	4246B	4246B	4246B	4246B	3646B
CRANK PIN BEARING	4SD	4SD	4SD	4SD	4SD
EQUALIZER BEARING	5R	5R	5R	5R	7R
CENTER BEARING	4TG	4TG	4TG	4TG	4TG

UNIT	C-P57D-89-42	C-P40D-89-42	C-P57-76-42	C-P40D-76-42	C-P40D-89-36
POLISH ROD CAPACITY, LBS.	8900	8900	7600	7600	8900
STROKE LENGTHS, INCHES.	42", 32", 22"	42", 32", 22"	42", 32", 22"	42", 32", 22"	36", 28", 20"
WALKING BEAM	16" x 36 Lbs.	16" x 36 Lbs.	16" x 36 Lbs.	16" x 36 Lbs.	16" x 36 Lbs.
WIRELINE HANGER	3/4" x 6 ¹ / ₂ " CTRS.	3/4" x 6 ¹ / ₂ " CTRS.	3/4" x 6 ¹ / ₂ " CTRS.	3/4" x 6 ¹ / ₂ " CTRS.	3/4" x 6 ¹ / ₂ " CTRS.
CRANKS	4246B	3646B	4246B	3646B	3646B
CRANK PIN BEARING	4SD	4SD	4SD	4SD	4SD
EQUALIZER BEARING	5R	7R	5R	7R	7R
CENTER BEARING	4TG	4TG	4TG	4TG	4TG

COUNTERBALANCE DATA

UNIT	C-P57D-89-54 C-P57D-76-54	C-P57D-109-48 C-P57D-95-48	C-P40D-76-48	C-P57D-89-42 C-P57D-76-42	C-P40D-89-42 C-P40D-76-42	C-P40D-89-36
STROKE	54"	48"	48"	42"	42"	36"
STRUCTURAL UNBALANCE	+ 105 Lbs.	+ 180 Lbs.	+ 190 Lbs.	+ 280 Lbs.	+ 280 Lbs.	+ 375 Lbs.
C BAL., CRANKS ONLY	1,780	2,060	2,080	2,380	2,450	2,820
4 No. 5ARO Counterweights	5,970	6,765	6,800	7,640	7,880	8,945
4 No. 5A Aux. Weights	7,650	8,650	8,690	9,750	10,055	11,400
4 No. 5CRO Counterweights	4,940	5,610	5,640	6,345	6,545	7,440
4 No. 5C Aux. Weights	6,505	7,365	7,400	8,305	8,570	9,720
4 No. 6RO Counterweights	4,320	4,910	4,935	5,565	5,740	6,530
4 No. 6 Aux. Weights	5,275	5,985	6,010	6,765	6,980	7,930
4 No. 7RO Counterweights	3,450	3,930	3,955	4,470	4,610	5,255
4 No. 7 Aux. Weights	4,190	4,760	4,790	5,400	5,570	6,340
6 No. 7 Aux. Weights	4,560	5,180	5,205	5,865	6,050	6,880

NOTE: Do not use above dimensions for foundation. Request foundation plan.

CONVENTIONAL PUMPING UNIT SPECIFICATIONS

UNIT DESIGNATION	C-912D-365-168 C-640D-365-168	C-912D-305-168 C-640D-305-168 C-456D-305-168	C-912D-427-144	C-912D-365-144 C-640D-365-144	C-640D-305-144 C-456D-305-144
POLISHED ROD CAPACITY, LBS.	36,500	30,500	42,700	36,500	30,500
STROKE LENGTHS, INCHES	168, 145, 124	168, 145, 124	144, 124, 106	144, 124, 106	144, 124, 106
WALKING BEAM	33" x 221 Lbs.	33" x 201 Lbs.	33" x 221 Lbs.	33" x 201 Lbs.	30" x 173 Lbs.
WIRELINE HANGER	1 $\frac{3}{8}$ " x 16" CTRS.	1 $\frac{1}{4}$ " x 16" CTRS.	1 $\frac{3}{8}$ " x 16" CTRS.	1 $\frac{3}{8}$ " x 16" CTRS.	1 $\frac{1}{4}$ " x 16" CTRS.
CRANKS	94110C	94110C	94110C	94110C	94110C
CRANK PIN BEARING	1SC	1SC	1SC	1SC	1SC
EQUALIZER BEARING	OR	OR	OR	OR	OR
CENTER BEARING	OTGA	OTGA	OTGA	OTGA	1TGA

UNIT DESIGNATION	C-640D-256-144 C-456D-256-144 C-320D-256-144	C-456D-365-120	C-640D-305-120 C-456D-305-120	C-456D-256-120 C-320D-256-120	C-456D-213-120 C-320D-213-120 C-228D-213-120
POLISHED ROD CAPACITY, LBS.	25,600	36,500	30,500	25,600	21,300
STROKE LENGTHS, INCHES	144, 124, 106	120, 105, 90	120, 102, 85	120, 102, 85	120, 102, 85
WALKING BEAM	30" x 173 Lbs.	30" x 173 Lbs.	27" x 161 Lbs.	27" x 146 Lbs.	27" x 146 Lbs.
WIRELINE HANGER	1 $\frac{1}{4}$ " x 16" CTRS.	1 $\frac{3}{8}$ " x 12" CTRS.	1 $\frac{1}{4}$ " x 12" CTRS.	1 $\frac{3}{8}$ " x 12" CTRS.	1 $\frac{3}{8}$ " x 12" CTRS.
CRANKS	94110C	94110C	8495C	8495C	8495C
CRANK PIN BEARING	1SC	1SC	2SC	2SC	2SC
EQUALIZER BEARING	OR	OR	OR	1R	1R
CENTER BEARING	1TGA	OTGA	1TGA	2TGB	2TGB

UNIT DESIGNATION	C-320D-305-100	C-456D-256-100 C-320D-256-100	C-228D-213-100	C-228D-173-100 C-160D-173-100	C-320D-246-86 C-228D-246-86
POLISHED ROD CAPACITY, LBS.	30,500	25,600	21,300	17,300	24,600
STROKE LENGTHS, INCHES	100, 85, 70	100, 85, 70	100, 86, 73	100, 86, 73	86, 74, 61
WALKING BEAM	27" x 146 Lbs.	27" x 146 Lbs.	24" x 117 Lbs.	24" x 104 Lbs.	24" x 117 Lbs.
WIRELINE HANGER	1 $\frac{1}{4}$ " x 12" CTRS.	1 $\frac{3}{8}$ " x 12" CTRS.	1 $\frac{3}{8}$ " x 12" CTRS.	1 $\frac{3}{8}$ " x 12" CTRS.	1 $\frac{3}{8}$ " x 12" CTRS.
CRANKS	8495C	8495C	7478C	7478C	8495C
CRANK PIN BEARING	2SC	2SC	2SC	3SD	3SD
EQUALIZER BEARING	1R	1R	1R	2RA	2RA
CENTER BEARING	2TGB	2TGB	2TGB	2TGB	2TGB

UNIT DESIGNATION	C-320D-213-86 C-228D-213-86	C-160D-173-86	C-114D-119-86	C-320D-246-74	C-228D-200-74 C-160D-200-74
POLISHED ROD CAPACITY, LBS.	21,300	17,300	11,900	24,600	20,000
STROKE LENGTHS, INCHES	86, 74, 62	86, 74, 62	86, 72, 59	74, 64, 54	74, 64, 54
WALKING BEAM	24" x 104 Lbs.	24" x 104 Lbs.	24" x 84 Lbs.	24" x 104 Lbs.	24" x 94 Lbs.
WIRELINE HANGER	1 $\frac{3}{8}$ " x 12" CTRS.	1 $\frac{3}{8}$ " x 12" CTRS.	1 $\frac{3}{8}$ " x 12" CTRS.	1 $\frac{3}{8}$ " x 9" CTRS.	1" x 9" CTRS.
CRANKS	7478C	7478C	6468C	7478C	7478C
CRANK PIN BEARING	3SD	3SD	4SD	3SD	3SD
EQUALIZER BEARING	2RA	2RA	3R	2RA	2RA
CENTER BEARING	2TGB	2TGB	4TGA	2TGB	2TGB

CONVENTIONAL PUMPING UNIT SPECIFICATIONS

UNIT DESIGNATION	C-228D-173-74 C-160D-173-74	C-160D-143-74 C-114D-143-74	C-160D-173-64 C-114D-173-64	C-160D-143-64 C-114D-143-64	C-80D-119-64
POLISHED ROD CAPACITY, LBS.	17,300	14,300	17,300	14,300	11,900
STROKE LENGTHS, INCHES	74, 62, 51	74, 62, 51	64, 54, 44	64, 52, 40	64, 53, 42
WALKING BEAM	24" x 84 Lbs.	24" x 84 Lbs.	24" x 84 Lbs.	18" x 71 Lbs.	18" x 60 Lbs.
WIRELINE HANGER	1" x 9" CTRS.	1" x 9" CTRS.	1" x 9" CTRS.	1" x 9" CTRS.	1" x 9" CTRS.
CRANKS	6468C	6468C	6468C	5456C	4850B
CRANK PIN BEARING	3SD	4SD	4SD	4SD	5SA
EQUALIZER BEARING	2RA	3R	3R	3R	4R
CENTER BEARING	2TGB	4TGA	4TGA	4TGA	4TGA

UNIT DESIGNATION	C-114D-173-54	C-114D-133-54 C-80D-133-54	C-80D-119-54	C-57D-76-54	C-80D-133-48
POLISHED ROD CAPACITY, LBS.	17,300	13,300	11,900	7,600	13,300
STROKE LENGTHS, INCHES	54, 44, 34	54, 45, 36	54, 45, 36	54, 41, 28	48, 40, 32
WALKING BEAM	18" x 71 Lbs.	18" x 60 Lbs.	18" x 60 Lbs.	16" x 36 Lbs.	16" x 57 Lbs.
WIRELINE HANGER	1" x 9" CTRS.	7/8" x 9" CTRS.	7/8" x 9" CTRS.	3/4" x 9" CTRS.	7/8" x 9" CTRS.
CRANKS	5456C	4850B	4850B	4246B	4850B
CRANK PIN BEARING	4SD	5SA	5SA	5SA	5SA
EQUALIZER BEARING	3R	4R	4R	5R	4R
CENTER BEARING	4TGA	4TGA	4TGA	5C	4TGA

UNIT DESIGNATION	C-80D-109-48 C-57D-109-48	C-57D-95-48	C-40D-76-48	C-57D-89-42 C-40D-89-42	C-57D-76-42 C-40D-76-42
POLISHED ROD CAPACITY, LBS.	10,900	9,500	7,600	8,900	7,600
STROKE LENGTHS, INCHES	48, 37, 25	48, 37, 25	48, 37, 27	42, 33, 23	42, 33, 23
WALKING BEAM	16" x 45 Lbs.	16" x 45 Lbs.	16" x 36 Lbs.	16" x 36 Lbs.	16" x 36 Lbs.
WIRELINE HANGER	7/8" x 9" CTRS.	7/8" x 9" CTRS.	7/8" x 9" CTRS.	3/4" x 6 1/2" CTRS.	3/4" x 6 1/2" CTRS.
CRANKS	4246B	4246B	3644B	3644B	3644B
CRANK PIN BEARING	5SA	5SA	6	6	6
EQUALIZER BEARING	5R	5R	7R	7R	7R
CENTER BEARING	5C	5C	6CA	6CA	6CA

UNIT DESIGNATION	C-40D-89-36	C-25D-67-36	C-25D-56-36	C-25D-67-30	C-25D-53-30
POLISHED ROD CAPACITY, LBS.	8,900	6,700	5,600	6,700	5,300
STROKE LENGTHS, INCHES	36, 28, 20	36, 28, 20	36, 28, 20	30, 20	30, 20
WALKING BEAM	14" x 34 Lbs.	12" x 26 Lbs.	12" x 26 Lbs.	12" x 26 Lbs.	12" x 26 Lbs.
WIRELINE HANGER	3/4" x 6 1/2" CTRS.	5/8" x 6 1/2" CTRS.	5/8" x 6 1/2" CTRS.	5/8" x 6 1/2" CTRS.	1/2" x 6 1/2" CTRS.
CRANKS	3644B	3644B	3644B	2436B	2436B
CRANK PIN BEARING	6	6	6	6	6
EQUALIZER BEARING	7R	7R	7R	7R	7R
CENTER BEARING	6CA	6CA	6CA	6CA	6CA

CONVENTIONAL COUNTERBALANCE DATA

All Counterbalance Shown In Lbs., Effective At Polished Rod With Weights At Maximum Position, Including Structural Unbalance.

See Example Below.

UNIT	C-912D-365-168 C-912D-305-168 C-640D-365-168 C-640D-305-168 C-456D-305-168	C-912D-427-144 C-912D-365-144 C-640D-365-144	C-640D-305-144 C-456D-305-144	C-640D-256-144 C-456D-256-144 C-320D-256-144	C-456D-365-120	C-640D-305-120 C-456D-305-120	C-456D-256-120 C-320D-256-120	C-456D-213-120 C-320D-213-120 C-228D-213-120
STROKE	168"	144"	144"	144"	120"	120"	120"	120"
STRUCTURAL UNBALANCE	- 1,500 Lbs.	- 650 Lbs.	- 520 Lbs.	- 400 Lbs.	+ 570 Lbs.	- 120 Lbs.	+ 55 Lbs.	0 Lbs.
CRANKS	94110C	94110C	94110C	94110C	94110C	8495C	8495C	8495C
C'Bal., Cranks Only	4,360	6,190	6,360	6,480	8,670	5,570	5,740	5,685
4 No. OORO Counterweights	19,370	23,710	23,970	29,415
4 No. OOS Aux. Weights	23,900	28,995	35,670
8 No. OOS Aux. Weights	28,430	34,285
4 No. ORO Counterweights	17,455	21,475	21,725	21,845	26,765	20,430	20,595
4 No. OS Aux. Weights	21,805	26,550	26,825	32,775	25,365
8 No. OS Aux. Weights	26,150	31,625
4 No. OARO Counterweights	15,440	19,125	19,360	19,480	23,980	18,305	18,470	18,415
4 No. OAS Aux. Weights	18,870	23,130	23,385	23,505	28,725	22,250	22,415
8 No. OAS Aux. Weights	22,300	27,130	27,410	33,465	26,190
4 No. 1RO Counterweights	12,980	16,250	16,470	16,590	20,580	15,505	15,670	15,615
4 No. 1S Aux. Weights	15,630	19,345	19,580	19,700	24,240	18,555	18,725	18,670
8 No. 1S Aux. Weights	18,280	22,435	22,690	*22,810	27,905	21,610	21,775
4 No. 2RO Counterweights	11,535	14,565	14,775	14,895	18,585	13,845	14,010	13,955
4 No. 2S Aux. Weights	14,105	17,565	17,790	17,910	22,135	16,810	16,975	16,920
8 No. 2S Aux. Weights	16,675	20,565	20,810	*20,930	25,690	19,770	19,935	19,880
4 No. 3CRO Counterweights	10,135	12,935	13,135	13,255	16,650	12,285	12,450	12,395
4 No. 3BS Aux. Weights	12,625	15,840	16,055	16,175	20,095	15,175	15,345	15,290
8 No. 3BS Aux. Weights	*15,115	*18,745	18,980	*19,100	23,535	18,070	*18,235	**18,180
4 No. 5ARO Counterweights	8,505	11,025	11,220	11,340	14,395	10,475	10,645	10,590
4 No. 5A Aux. Weights	10,165	12,965	13,165	13,285	16,690	12,445	12,615	12,560
8 No. 5A Aux. Weights	*11,825	*14,905	15,115	*15,235	18,985	14,410	*14,580	*14,525
4 No. 5CRO Counterweights	7,430	9,775	9,960	10,080	12,910	9,185	9,355	9,300
4 No. 5C Aux. Weights	8,945	11,545	11,740	11,860	15,005	10,970	11,140	11,085
8 No. 5C Aux. Weights	10,465	13,315	13,520	*13,640	17,105	12,755	12,920	12,865

UNIT	C-228D-173-74 C-160D-173-74	C-160D-143-74 C-114D-143-74	C-160D-173-64 C-114D-173-64	C-160D-143-64 C-114D-143-64	C-80D-119-64	C-114D-173-54	C-114D-133-54 C-80D-133-54	C-80D-119-54
STROKE	74"	74"	64"	64"	64"	54"	54"	54"
STRUCTURAL UNBALANCE	+ 450 Lbs.	+ 300 Lbs.	+ 550 Lbs.	+ 360 Lbs.	0 Lbs.	+ 500 Lbs.	+ 330 Lbs.	+ 330 Lbs.
CRANKS	6468C	6468C	6468C	5456C	4850B	5456C	4850B	4850B
C'Bal., Cranks Only	4,235	4,090	4,880	2,665	2,155	3,190	2,845	2,845
4 No. 3CRO Counterweights	11,005	10,870	12,630	8,605	10,115
4 No. 3BS Aux. Weights	13,925	13,790	15,965	11,165	13,105
8 No. 3BS Aux. Weights	16,840	13,725	16,090
4 No. 5ARO Counterweights	9,360	9,220	10,745	7,290	6,120	8,585	7,470	7,470
4 No. 5A Aux. Weights	11,410	11,275	13,090	9,145	7,740	10,745	9,360	9,360
8 No. 5A Aux. Weights	*13,465	*13,330	*15,440	*10,995	12,910	11,250
4 No. 5CRO Counterweights	8,040	7,900	9,235	6,120	5,135	7,220	6,320	6,320
4 No. 5C Aux. Weights	9,915	9,780	11,380	7,830	6,610	9,210	8,040	8,040
8 No. 5C Aux. Weights	*11,795	*11,660	*13,530	*9,535	11,205	9,760
4 No. 6RO Counterweights	7,220	7,075	8,295	5,400	4,515	6,380	5,595	5,595
4 No. 6 Aux. Weights	8,345	8,205	9,580	6,430	5,405	7,580	6,635	6,635
8 No. 6 Aux. Weights	9,470	9,330	10,870	7,460	6,295	8,785	7,675	7,675
4 No. 7RO Counterweights	6,160	6,015	7,085	4,440	3,700	5,260	4,645	4,645
4 No. 7 Aux. Weights	7,020	6,880	8,070	5,235	4,395	6,190	5,460	5,460
8 No. 7 Aux. Weights	7,880	7,740	9,050	6,030	5,091	7,115	6,270	6,270

EXAMPLE:

A C-640D-305-144 Unit with 4 No. OARO Counterweights and 4 No. OAS Auxiliary Weights would have a maximum counterbalance effect of 23,385 pounds in the 144" stroke. This effect includes a structural unbalance of - 520 pounds. If the counterbalance effect is desired for the 106" stroke, subtract the structural unbalance from the effect in the 144" stroke and multiply this difference by the ratio of 144 ÷ 106; then add the structural unbalance to this product. Thus, counterbalance effect in the 106" stroke = [23,385 - (-520)] × 144/106 + (-520) = 23,905 × 144/106 - 520 = 31,955 pounds. Structural Unbalance with a negative (-) sign indicates a walking beam assembly that is heavy on the well end. Structural Unbalance without the negative sign indicates a walking beam assembly that is heavy on the gear reducer end.

*Use only one aux. weight per counterweight on belt cover side on 912D, 320D, 160D, & 40D units.

**Use only one aux. weight per counterweight on belt cover side on 320D & 228D units.

***Use only one aux. weight per counterweight on belt cover side on 160D units.

CONVENTIONAL COUNTERBALANCE DATA

All Counterbalance Shown In Lbs., Effective At Polished Rod With Weights At Maximum Position, Including Structural Unbalance.

See Example Below.

UNIT	C-456D-256-100 C-320D-256-100 C-320D-305-100	C-228D-213-100 C-228D-173-100 C-160D-173-100	C-320D-246-86 C-228D-246-86	C-320D-213-86 C-228D-213-86	C-160D-173-86	C-114D-119-86	C-320D-246-74 C-228D-200-74 C-160D-200-74
STROKE	100"	100"	86"	86"	86"	86"	74"
STRUCTURAL UNBALANCE	+ 550 Lbs.	+ 0 Lbs.	+ 800 Lbs.	+ 450 Lbs.	+ 450 Lbs.	+ 115 Lbs.	+ 800 Lbs.
CRANKS	8495C	7478C	8495C	7478C	7478C	6468C	7478C
C'Bal., Cranks Only	7,330	3,910	8,720	4,910	4,910	3,395	5,960
4 No. OARO Counterweights	22,510
4 No. OAS Aux. Weights	27,210
4 No. 1RO Counterweights	19,170	12,855	22,545
4 No. 1S Aux. Weights	22,810	15,605
8 No. 1S Aux. Weights	26,450	18,355
4 No. 2RO Counterweights	17,195	11,425	20,235	13,490	13,490	10,430	15,870
4 No. 2S Aux. Weights	20,725	14,120	16,560	16,560	19,425
8 No. 2S Aux. Weights	24,260	16,810	19,635
4 No. 3CRO Counterweights	15,330	10,090	18,065	11,965	11,965	9,255	14,110
4 No. 3BS Aux. Weights	18,780	12,755	22,090	15,005	15,005	11,780	17,625
8 No. 3BS Aux. Weights	*22,230	*15,420	*18,045	*21,140
4 No. 5ARO Counterweights	13,180	8,510	15,550	10,160	10,160	7,830	12,025
4 No. 5A Aux. Weights	15,525	10,355	18,290	12,265	12,265	9,605	14,460
8 No. 5A Aux. Weights	*17,870	*12,195	*21,030	14,370	*14,370	11,385	***16,890
4 No. 5CRO Counterweights	11,640	7,310	13,750	8,795	8,795	6,685	10,445
4 No. 5C Aux. Weights	13,765	8,990	16,235	10,710	10,710	8,315	12,660
8 No. 5C Aux. Weights	15,895	*10,670	18,720	12,630	*12,630	9,940	***14,880
4 No. 6RO Counterweights	10,675	6,565	12,625	7,940	7,940	5,975	9,460
4 No. 6 Aux. Weights	11,935	7,565	14,100	9,085	9,085	6,950	10,780
8 No. 6 Aux. Weights	13,195	8,565	15,570	10,225	10,225	7,925	12,100
4 No. 7RO Counterweights	9,465	5,615	11,210	6,855	6,855	5,060	8,205
4 No. 7 Aux. Weights	10,420	6,375	12,330	7,725	7,725	5,805	9,210
8 No. 7 Aux. Weights	11,375	7,135	13,445	8,595	8,595	6,550	10,215

UNIT	C-57D-76-54	C-80D-133-48	C-80D-109-48 C-57D-109-48 C-57D-95-48	C-40D-76-48	C-57D-89-42 C-57D-76-42 C-40D-89-42 C-40D-76-42	C-40D-89-36 C-25D-67-36 C-25D-56-36	C-25D-67-30 C-25D-53-30
STROKE	54"	48"	48"	48"	42"	36"	30"
STRUCTURAL UNBALANCE	0 Lbs.	+ 440 Lbs.	+ 320 Lbs.	0 Lbs.	+ 150 Lbs.	+ 275 Lbs.	+ 150 Lbs.
CRANKS	4246B	4850B	4246B	3644B	3644B	3644B	2436B
C'Bal., Cranks Only	1,649	3,270	2,175	1,338	1,675	2,055	1,370
4 No. 5ARO Counterweights	5,760	8,475	6,800
4 No. 5A Aux. Weights	7,440	10,595	8,690
8 No. 5A Aux. Weights
4 No. 5CRO Counterweights	4,750	7,175	5,665	4,525	5,300	6,285
4 No. 5C Aux. Weights	6,285	9,115	7,395	6,160	7,165
8 No. 5C Aux. Weights
4 No. 6RO Counterweights	4,120	6,365	4,955	3,995	4,700	5,580	4,400
4 No. 6 Aux. Weights	5,050	7,535	6,005	5,000	5,840	6,915	5,540
8 No. 6 Aux. Weights	5,985	8,705	7,055	*6,985
4 No. 7RO Counterweights	3,275	5,295	4,005	3,090	3,670	4,380	3,400
4 No. 7 Aux. Weights	4,005	6,210	4,830	3,885	4,570	5,435	4,320
8 No. 7 Aux. Weights	4,740	7,125	5,655	*5,475

EXAMPLE:

A C-456D-305-144 with 4 No. OARO counterweights and 3 No. OAS auxiliary weights would have a maximum counterbalance effect in the 144" stroke of 19,360 + 3/4 (23,385 - 19,360) = 22,380 pounds. With this same combination of weights, the counterbalance effect in the 106" stroke is [22,380 - (-520)] x 144/106 + (-520) = 30,590 pounds. To convert effective counterbalance to maximum counterbalance torque for dynamometer card analysis, multiply the pounds counterbalance, minus the structural unbalance, by the torque factor at the 90° crank position.

*Use only one aux. weight per counterweight on belt cover side on 912D, 320D, 160D, & 40D units.

**Use only one aux. weight per counterweight on belt cover side on 320D & 228D units.

***Use only one aux. weight per counterweight on belt cover side on 160D units.

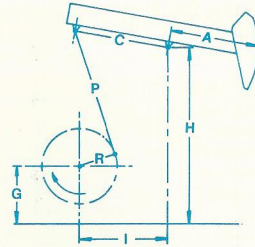


FIGURE 30
CONVENTIONAL PUMPING UNIT API GEOMETRY DIMENSIONS

UNIT	A	C	I	P	H	G	R1, R2, R3	S.U.	T.F. @ 90° STROKE LENGTH
C-912D-365-168	210	120.03	120	148.5	237.88	86.88	47, 41, 35	-1500	80.32/168
C-912D-305-168	210	120.03	120	148.5	237.88	86.88	47, 41, 35	-1500	80.32/168
C-640D-365-168	210	120.03	120	148.5	237.88	86.88	47, 41, 35	-1500	80.32/168
C-640D-305-168	210	120.03	120	148.5	237.88	86.88	47, 41, 35	-1500	80.32/168
C-456D-305-168	210	120.03	120	148.5	237.88	86.88	47, 41, 35	-1500	80.32/168
C-912D-427-144	180	120.03	120	148.5	237.88	86.88	47, 41, 35	-650	68.82/144
C-912D-365-144	180	120.03	120	148.5	237.88	86.88	47, 41, 35	-650	68.82/144
C-640D-365-144	180	120.03	120	148.5	238.88	89.88	47, 41, 35	-650	68.82/144
C-640D-305-144	180	120.08	120	144.5	238.88	89.88	47, 41, 35	-520	68.45/144
C-456D-305-144	180	120.08	120	144.5	238.88	89.88	47, 41, 35	-520	68.45/144
C-640D-256-144	180	120.08	120	144.5	238.88	89.88	47, 41, 35	-400	68.45/144
C-456D-256-144	180	120.08	120	144.5	238.88	89.88	47, 41, 35	-400	68.45/144
C-320D-256-144	180	120.08	120	144.5	238.88	89.88	47, 41, 35	-400	68.45/144
C-456D-365-120	152	120.03	120	148.5	238.88	89.88	47, 41, 35	570	58.12/120
C-640D-305-120	155	111.09	111	133.5	213	75	42, 36, 30	-120	57.02/120
C-456D-305-120	155	111.09	111	133.5	213	75	42, 36, 30	-120	57.02/120
C-456D-256-120	155	111.07	111	132	211	75	42, 36, 30	55	57.05/120
C-320D-256-120	155	111.07	111	132	211	75	42, 36, 30	55	57.05/120
C-456D-213-120	155	111.07	111	132	211	75	42, 36, 30	0	57.05/120
C-320D-213-120	155	111.07	111	132	211	75	42, 36, 30	0	57.05/120
C-228D-213-120	155	111.07	111	132	211	75	42, 36, 30	0	57.05/120
C-456D-256-100	129	111.07	111	132	211	75	42, 36, 30	550	47.48/100
C-320D-256-100	129	111.07	111	132	211	75	42, 36, 30	550	47.48/100
C-320D-305-100	129	111.07	111	132	211	75	42, 36, 30	550	47.48/100
C-228D-213-100	129	96.08	96	113	180	63	37, 32, 27	0	48.37/100
C-228D-173-100	129	96.05	96	114	180	63	37, 32, 27	0	48.37/100
C-160D-173-100	129	96.05	96	114	180	63	37, 32, 27	0	48.37/100
C-320D-246-86	111	111.04	111	133	211	75	42, 36, 30	800	40.96/86
C-228D-246-86	111	111.04	111	133	211	75	42, 36, 30	800	40.96/86
C-320D-213-86	111	96.05	96	114	180	63	37, 32, 27	450	41.61/86
C-228D-213-86	111	96.05	96	114	180	63	37, 32, 27	450	41.61/86
C-160D-173-86	111	96.05	96	114	180	63	37, 32, 27	450	41.61/86
C-114D-119-86	111	84.05	84	93.75	150.13	53.38	32, 27, 22	115	40.98/86
C-320D-246-74	96	96.05	96	114	180	63	37, 32, 27	800	35.99/74
C-228D-200-74	96	96.05	96	114	180	63	37, 32, 27	800	35.99/74
C-160D-200-74	96	96.05	96	114	180	63	37, 32, 27	800	35.99/74
C-228D-173-74	96	84.05	84	96	152.38	53.38	32, 27, 22	450	35.49/74
C-160D-173-74	96	84.05	84	96	152.38	53.38	32, 27, 22	450	35.49/74
C-160D-143-74	96	84.05	84	93.75	150.13	53.38	32, 27, 22	300	35.49/74
C-114D-143-74	96	84.05	84	93.75	150.13	53.38	32, 27, 22	300	35.49/74
C-160D-173-64	84	84.05	84	93.75	150.13	53.38	32, 27, 22	550	31.02/64
C-114D-173-64	84	84.05	84	93.75	150.13	53.38	32, 27, 22	550	31.02/64
C-160D-143-64	84	72.06	72	84	132	45	27, 22, 17	360	30.59/64
C-114D-143-64	84	72.06	72	84	132	45	27, 22, 17	360	30.59/64
C-80D-119-64	84	64	64	74.5	116	41	24, 20, 16	0	30.85/64
C-114D-173-54	72	72.06	72	84	132	45	27, 22, 17	500	26.22/54
C-114D-133-54	72	64	64	74.5	116	41	24, 20, 16	330	26.45/54
C-80D-133-54	72	64	64	74.5	116	41	24, 20, 16	330	26.45/54
C-80D-119-54	72	64	64	74.5	116	41	24, 20, 16	330	26.45/54
C-P57D-76-54	64	51	51	64	103	39	21, 16, 11	105	25.80/54
C-P57D-89-54	64	51	51	64	103	39	21, 16, 11	105	25.80/54
C-80D-133-48	64	64	64	74.5	116	41	24, 20, 16	440	23.51/48
C-80D-109-48	64	56.05	56	65.63	105	37	21, 16, 11	320	23.30/48
C-57D-109-48	64	56.05	56	65.63	105	37	21, 16, 11	320	23.30/48
C-57D-95-48	64	56.05	56	65.63	105	37	21, 16, 11	320	23.30/48
C-P57D-109-48	57	51	51	64.00	103	39	21, 16, 11	180	22.98/48
C-P57D-95-48	57	51	51	64.00	103	39	21, 16, 11	180	22.98/48
C-40D-76-48	64	48.17	48	57.5	98.5	37	18, 14, 10	0	23.10/48
C-P40D-76-48	61	47	47	56	95	39	18, 14, 10	190	22.92/48
C-P57D-89-42	51	51	51	64	103	39	21, 16, 11	280	20.56/42
C-P57D-76-42	51	51	51	64	103	39	21, 16, 11	280	20.56/42
C-P40D-89-42	53	47	47	56	95	39	18, 14, 10	280	19.92/42
C-P40D-76-42	53	47	47	56	95	39	18, 14, 10	280	19.92/42
C-57D-89-42	56	48.17	48	57.5	98.5	37	18, 14, 10	150	20.27/42
C-57D-76-42	56	48.17	48	57.5	98.5	37	18, 14, 10	150	20.27/42
C-40D-89-42	56	48.17	48	57.5	98.5	37	18, 14, 10	150	20.27/42
C-40D-76-42	56	48.17	48	57.5	98.5	37	18, 14, 10	150	20.27/42
C-40D-89-36	48	48.17	48	57.5	98.5	37	18, 14, 10	275	17.37/36
C-P40D-89-36	47	47	47	56	95	39	18, 14, 10	375	17.66/36
C-25D-67-36	48	48.17	48	57.5	98.5	37	18, 14, 10	275	17.37/36
C-25D-56-36	48	48.17	48	57.5	98.5	37	18, 14, 10	275	17.37/36
C-25D-67-30	45	36.22	36	49.5	84.5	31	12, 8	150	14.53/30
C-25D-53-30	45	36.22	36	49.5	84.5	31	12, 8	150	14.53/30

LUFKIN MARK II UNITORQUE PUMPING UNITS

THE UNITORQUE GEOMETRY

The Mark II's unique UNITORQUE geometry is characterized by three (3) basic configurations which reduce the rod load and peak torque over that of a conventional pumping unit. The design characteristics which make the Mark II unique are:

A. Shifting the gearbox from directly under the equalizer towards the Samson post turning in a preferred direction of rotation, creates an upstroke that occurs in approximately 195° of crank rotation and a downstroke of approximately 165° of crank rotation.

B. Placing the equalizer between the horsehead and the Samson post thus creating a "push-up" or "Class 3" lever system.

The 195° upstroke, coupled with the front mounted geometry, reduces the acceleration at the beginning of the upstroke where the load is greatest, thereby effecting a reduction in polished rod load. Locating the cross-yoke forward of the gear reducer creates a greater mechanical advantage for lifting the heavy load on the upstroke, and a lesser mechanical advantage for the reduced downstroke load, i.e., the maximum upstroke torque factor is reduced while the maximum downstroke torque factor is increased.

C. An angular offset in the crank that produces a more effective counterbalance torque which at the beginning of the upstroke "lags" the well load torque approximately 7½°. Similarly, at the beginning of the downstroke, this same offset condition produces a counterbalance torque which "leads" the well load torque approximately 7½° (see Figure 31).

Independently these features would not produce a relatively uniform torque, but working together a "unitorque" system is obtained which can reduce the torque on the gearbox up to 35% as well as lowering power costs and often, prime mover size.

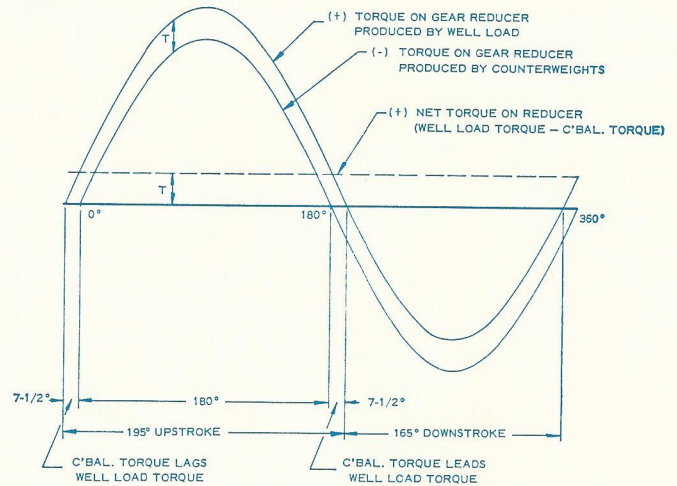


FIGURE 31

Illustration showing how a uniform torque can be obtained under ideal conditions.

NOTE: The Mark II Unit must be operated in a counter-clockwise direction (Standing at the side of the unit with the wellhead to the right.)



FIGURE 32

Lufkin M-1280D-427-216 driven by a slow speed engine.

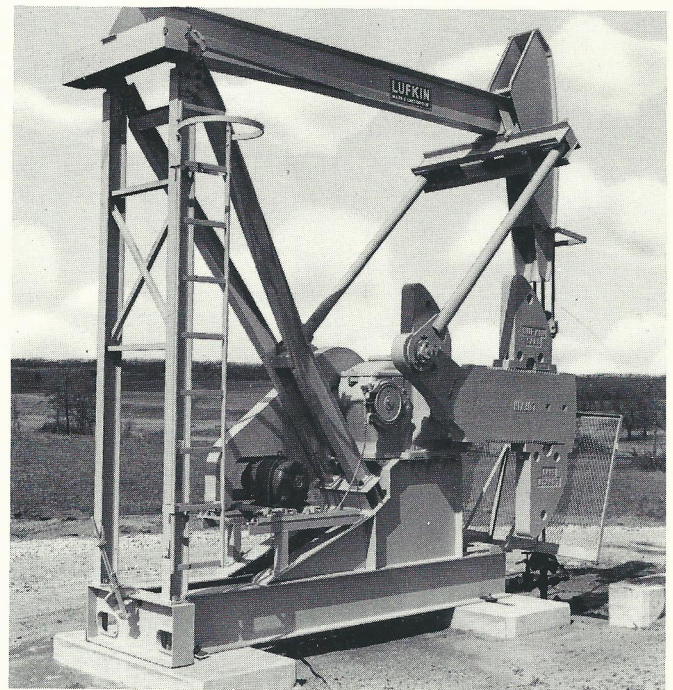


FIGURE 33

"TWO-POINT" SUSPENSION bases are standard for all Lufkin Mark II Pumping Units. The "two point" base reduces concrete requirements approximately 80% by permitting the use of small salvageable precast concrete blocks in front and rear. This simple foundation assures a completely portable unit and foundation which requires a minimum of installation time.

**MARK II PUMPING UNIT ASSEMBLIES
GENERAL DIMENSIONS**

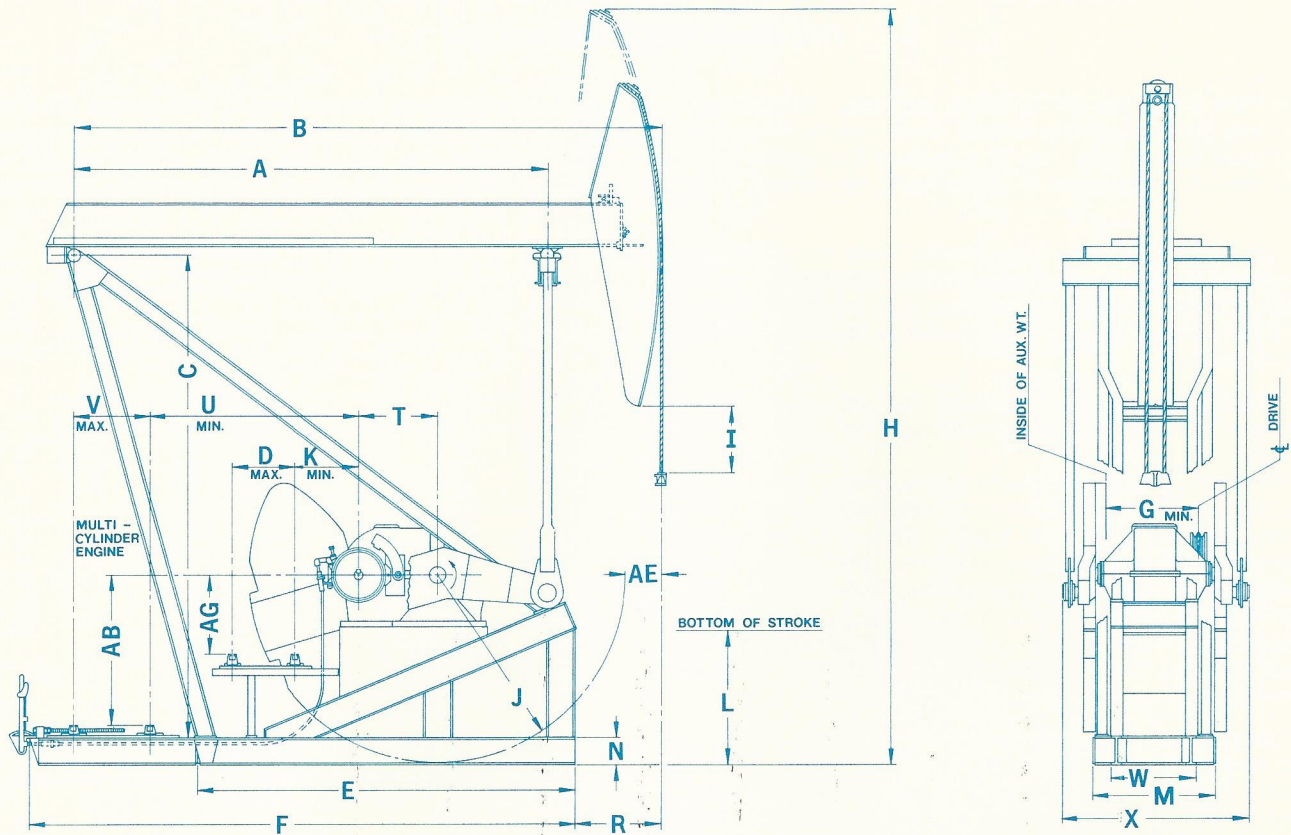


FIGURE 34

UNIT	A	B	C	D	E	F	G	H	I	J	K	L	M	N	R	T	U	V	W	X	AB	AE	AG
M-1824D-427-216	25'-6"	32'-0"	27'-5 7/8"	55"	18'-7"	27'-9 3/4"	67"	47'-5"	44 3/8"	130"	25 3/8"	75 1/2"	8'-5"	18"	45"	58 7/8"	8'-9 7/8"	52"	48 1/2"	10'-4"	9'-0 1/2"	26"	51"
M-1280D-427-216	"	"	"	"	"	28'-5 1/2"	57 1/4"	"	"	"	31 3/4"	"	8'-0"	"	"	52 1/2"	10'-0"	"	"	9'-6"	"	"	"
M-1280D-427-192	"	"	"	"	"	"	"	45'-10"	63 1/4"	"	"	80 1/4"	"	"	"	"	"	"	"	"	"	"	"
M-912DS-365-216	"	"	"	"	"	27'-7 1/2"	53 5/8"	47'-5"	44 3/8"	"	23"	75 1/2"	"	"	"	48 1/2"	9'-1 1/2"	"	"	8'-11"	"	"	59"
M-912DS-427-192	"	"	"	"	"	"	"	45'-10"	63 1/4"	"	"	80 1/4"	"	"	"	"	"	"	"	"	"	"	"
M-912DS-427-168	22'-6"	27'-10"	23'-0 7/8"	50"	18'-2 3/4"	24'-10 1/4"	"	39'-9"	32 3/8"	108"	25 1/2"	83 1/8"	6'-9 1/2"	16"	48"	"	9'-0 3/8"	"	50"	"	9'-6 3/8"	23 3/8"	46"
M-912D-305-216	25'-6"	32'-0"	27'-5 7/8"	55"	18'-7"	27'-2 1/2"	"	47'-5"	44 3/8"	130"	23"	75 1/2"	8'-0"	18"	45"	"	9'-1 1/2"	47"	48 1/2"	9'-1"	9'-0 1/2"	26"	59"
M-912D-305-192	"	"	"	"	"	"	"	45'-10"	63 1/4"	"	"	80 1/4"	"	"	"	"	"	"	"	"	"	"	"
M-912D-365-168	22'-6"	27'-10"	23'-0 7/8"	50"	18'-2 3/4"	24'-10 1/4"	"	39'-3"	40 1/4"	108"	25 1/2"	75"	6'-9 1/2"	16"	48"	"	9'-0 3/8"	52"	50"	8'-9"	7'-6 3/8"	23 3/8"	46"
M-912D-305-168	"	"	"	"	"	"	"	"	"	"	"	"	"	"	"	"	"	"	"	"	"	"	"
M-912D-365-144	21'-6"	26'-0"	21'-0 7/8"	"	"	"	"	35'-6"	33 5/8"	"	"	81 5/8"	"	"	42 1/2"	"	"	"	"	"	"	18"	"
M-912D-305-144	"	"	"	"	"	"	"	"	"	"	"	"	"	"	"	"	"	"	"	8'-7 3/8"	"	"	"
M-640D-305-192	25'-6"	32'-0"	27'-5 7/8"	55"	18'-7"	27'-2 1/2"	49 7/8"	45'-10"	63 1/4"	130"	26 5/8"	80 1/4"	8'-0"	18"	45"	41 1/2"	9'-8 1/2"	47"	48 1/2"	8'-9"	9'-0 1/2"	26"	60"
M-640D-305-168	22'-6"	27'-10"	23'-0 7/8"	50"	18'-2 3/4"	24'-10 1/4"	"	39'-3"	40 1/4"	108"	24 1/8"	75"	6'-9 1/2"	16"	48"	"	9'-7 1/4"	52"	50"	8'-5"	7'-6 3/8"	23 3/8"	46"
M-640D-365-144	21'-6"	26'-0"	21'-0 7/8"	"	"	"	"	35'-6"	33 5/8"	"	"	81 5/8"	"	"	42 1/2"	"	"	"	"	"	"	18"	"
M-640D-305-144	"	"	"	"	"	"	"	"	"	"	"	"	"	"	"	"	"	"	"	8'-3 3/8"	"	"	"
M-640D-256-144	"	"	"	"	"	"	"	35'-2"	47 1/4"	"	"	69"	"	"	"	"	"	"	"	"	"	"	"
M-640D-305-120	"	"	"	"	"	"	"	33'-3"	59 3/4"	"	"	80"	"	"	"	"	"	"	"	"	"	"	"
M-456D-305-192	25'-6"	32'-0"	27'-5 7/8"	55"	18'-7"	27'-2 1/2"	"	45'-10"	63 1/4"	130"	29 3/4"	80 1/4"	8'-0"	18"	45"	38 3/8"	9'-11 5/8"	47"	48 1/2"	8'-9"	9'-0 1/2"	26"	60"
M-456D-305-168	22'-6"	27'-10"	23'-0 7/8"	50"	18'-2 3/4"	24'-10 1/4"	"	39'-3"	40 1/4"	108"	31"	75"	6'-9 1/2"	16"	48"	"	9'-7 1/4"	52"	50"	8'-5"	7'-6 3/8"	23 3/8"	46"
M-456D-365-144	21'-6"	26'-0"	21'-0 7/8"	"	"	"	"	35'-6"	33 5/8"	"	"	81 5/8"	"	"	42 1/2"	"	"	"	"	"	"	18"	"
M-456D-305-144	"	"	"	"	"	"	"	"	"	"	"	"	"	"	"	"	"	"	"	8'-3 3/8"	"	"	"
M-456D-256-144	"	"	"	"	"	"	"	36'-2"	47 1/2"	"	"	68 1/2"	"	"	"	"	"	"	"	"	"	"	"
M-456D-365-120	"	"	"	"	"	"	"	33'-3"	59 3/4"	"	"	80"	"	"	"	"	"	"	"	8'-5"	"	"	"
M-456D-305-120	"	"	"	"	"	"	"	"	"	"	"	"	"	"	"	"	"	"	"	8'-3 1/2"	"	"	"
M-456D-256-120	"	"	"	"	"	"	"	33'-4"	73 7/8"	"	"	67 7/8"	"	"	"	"	"	"	"	"	"	"	"

NOTE: Do not use above dimensions for foundation. Request foundation plan.

(Units on this page are designed to be installed on "two point" foundations. See figures 32 and 33.)

**MARK II PUMPING UNIT ASSEMBLIES
GENERAL DIMENSIONS**

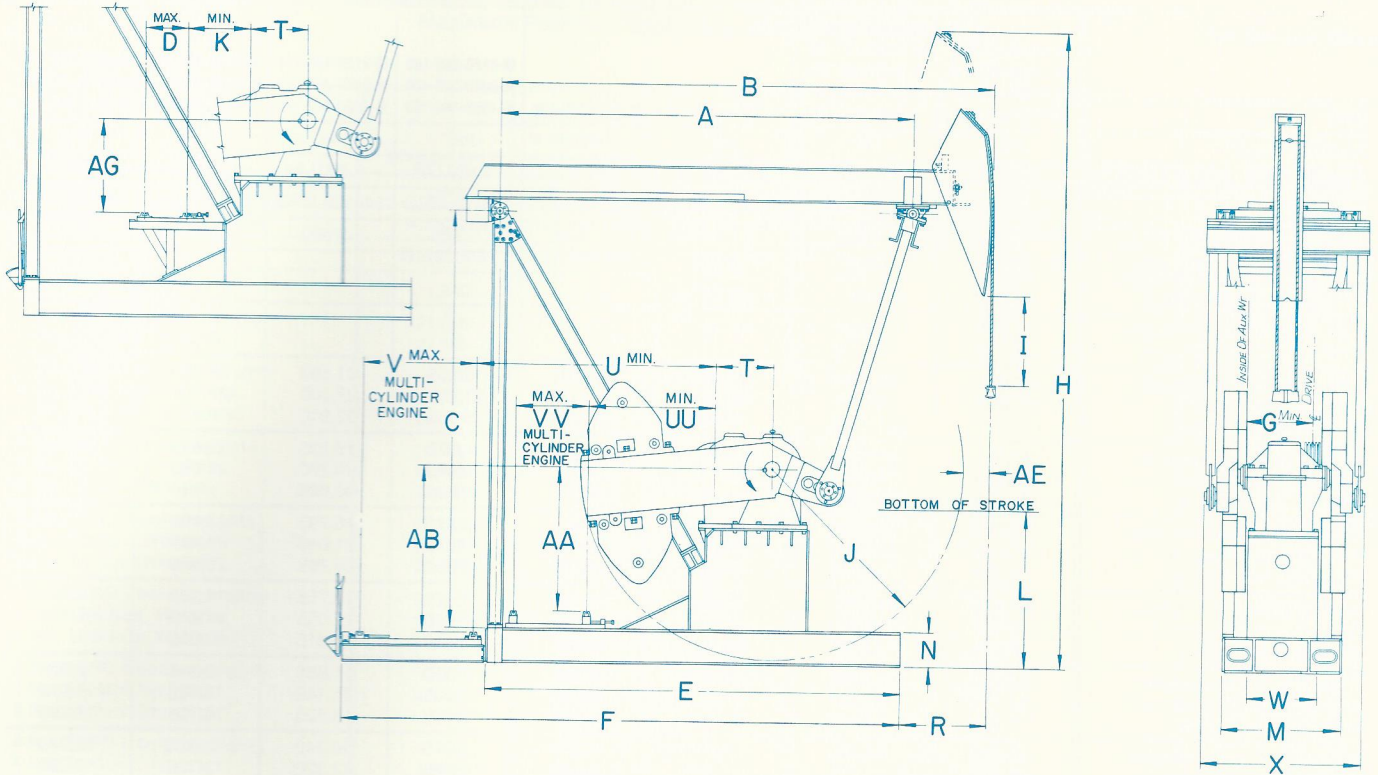


FIGURE 35

UNIT	A	B	C	D	E	F	G	H	I	J	K	L	M	N	R	T	U	V	W	X	AA	AB	AE	AG	UU	VV
M-320D-256-144	21'-6"	26'-0"	21'-0 7/8"	33 1/4"	21'-6 3/8"	*	42 3/4"	36'-10"	47 5/8"	108"	35 3/8"	77 1/2"	6'-3 3/4"	24"	60"	34"	"	"	43"	7'-4 3/8"	7'-2"	"	18"	46"	7'-4"	55"
M-320D-305-120	"	"	"	"	"	*	"	33'-11"	65"	"	"	82 7/8"	"	"	"	"	"	"	"	"	"	"	"	"	"	"
M-320D-256-120	"	"	"	"	"	*	"	33'-10"	69"	"	"	80 3/4"	"	"	"	"	"	"	"	"	"	"	"	"	"	"
M-320D-213-120	"	"	"	"	"	*	"	"	"	"	"	"	"	"	"	"	"	"	"	"	"	"	"	"	"	"
M-320D-305-100	"	"	"	"	"	*	"	32'-4"	84 5/8"	"	"	83 1/8"	"	"	"	"	"	"	"	"	"	"	"	"	"	"
M-320D-256-100	"	"	"	"	"	*	"	31'-9"	88 3/8"	"	"	81 1/4"	"	"	"	"	"	"	"	"	"	"	"	"	"	"
M-228D-256-120	"	"	"	28 3/4"	"	27'-10 3/8"	38 1/2"	33'-10"	69"	"	41 5/8"	80 3/4"	"	"	"	30"	14'-8 1/4"	47 1/2"	37"	6'-9 3/8"	"	7'-11 1/4"	"	50 1/4"	7'-8"	
M-228D-213-120	"	"	"	"	"	"	"	"	"	"	"	"	"	"	"	"	"	"	"	"	"	"	"	"	"	"
M-228D-256-100	"	"	"	"	"	"	"	31'-9"	88 3/8"	"	"	81 1/4"	"	"	"	"	"	"	"	"	"	"	"	"	"	"
M-228D-173-100	"	"	"	"	"	"	"	"	"	"	"	"	"	"	"	"	"	"	"	"	"	"	"	"	"	"
M-228D-246-86	15'-6"	18'-6"	15'-8 3/8"	29 1/4"	15'-8"	21'-11 1/2"	"	25'-8"	45 1/4"	86 5/8"	22 7/8"	75 1/2"	57 1/4"	"	39"	"	9'-8 1/2"	"	6'-8 3/8"	**	6'-13 3/8"	113 3/8"	411 1/2"	**	**	
M-228D-213-86	"	"	"	"	15'-7 5/8"	21'-11 1/8"	"	25'-5"	"	"	"	72 1/2"	"	21"	"	"	9'-8 1/8"	"	"	"	**	70 7/8"	"	"	**	**
M-228D-200-74	"	"	"	"	"	"	"	24'-7"	52 7/8"	"	"	73 1/4"	"	"	"	"	"	"	"	"	**	"	"	"	**	**
M-228D-173-74	"	"	"	"	"	"	"	24'-6"	"	"	"	72 1/8"	"	"	"	"	"	"	"	"	**	"	"	"	**	**
M-160D-213-86	"	"	"	33 3/4"	"	21'-0 5/8"	32 1/2"	25'-5"	45 1/4"	"	24 9/16"	72 1/8"	54 1/4"	"	26"	"	8'-10 5/8"	55"	32"	6'-0 3/8"	**	6'-6 1/8"	"	38 5/8"	**	**
M-160D-173-86	"	"	"	"	"	"	"	"	41 1/8"	"	"	"	"	"	"	"	"	"	"	"	**	"	"	"	**	**
M-160D-200-74	"	"	"	"	"	"	"	24'-7"	52 7/8"	"	"	73 1/4"	"	"	"	"	"	"	"	"	**	"	"	"	**	**
M-160D-173-74	"	"	"	"	"	"	"	24'-6"	"	"	"	72 1/8"	"	"	"	"	"	"	"	"	**	"	"	"	**	**
M-114D-143-86	13'-6"	15'-9"	12'-3 1/2"	30"	13'-5"	19'-8 1/2"	28 3/4"	21'-5"	14"	62"	20 1/4"	57 1/8"	42 3/4"	16"	32"	24"	9'-0 1/2"	52"	25"	67 3/8"	**	44 3/8"	16"	35 3/4"	**	**
M-114D-173-74	15'-6"	18'-6"	15'-8 3/8"	30 3/4"	15'-7 5/8"	21'-11 1/8"	"	24'-6"	52 7/8"	86 5/8"	28"	72 7/8"	54 1/4"	21"	39"	"	10'-2 1/8"	"	69"	**	70 3/8"	113 3/8"	415 3/8"	**	**	
M-114D-143-74	13'-6"	15'-9"	12'-3 1/2"	30"	13'-5"	19'-8 1/2"	"	20'-7"	27 3/4"	62"	20 1/4"	56 7/8"	42 3/4"	16"	32"	"	9'-0 1/2"	"	67 3/8"	**	44 3/8"	16"	35 3/4"	**	**	
M-114D-173-64	"	"	"	"	"	"	"	19'-10"	21"	"	"	71 5/8"	"	"	"	"	"	"	"	"	**	"	"	"	**	**
M-114D-143-64	"	"	"	"	"	"	"	"	"	"	"	"	"	"	"	"	"	"	"	"	**	"	"	"	**	**

*On 100", 120" and 144" Stroke Units, on This Page Multi-Cylinder Engines are Mounted on Main Base Beams Forward of Samson Post. See Dimensions UU, VV, and AA.
**On 64", 74" and 86" Stroke Units, Multi-Cylinder Engines are Mounted Behind the Samson Post. See Dimensions U, V, and AB.

NOTE: Do not use above dimensions for foundation. Request foundation plans.
(Units on this page are designed to be installed on "two point" foundations. See figures 32 and 33.)

MARK II COUNTERBALANCE DATA

All Counterbalance Shown In Lbs., Effective At Polished Rod With Weights At Maximum Position, Including Structural Unbalance.

See Example Page 23.

UNIT	M-1824D-427-216 M-1280D-427-216 M-912DS-365-216 M-912D-305-216	M-1280D-427-192 M-912DS-427-192 M-912D-305-192 M-640D-305-192 M-456D-305-192	M-912DS-427-168	M-912D-365-168	M-912D-305-168 M-640D-305-168 M-456D-305-168	M-912D-365-144 M-640D-365-144 M-456D-365-144	M-912D-305-144 M-640D-305-144 M-456D-305-144	M-640D-256-144 M-456D-256-144 M-320D-256-144
STROKE	216"	192"	168"	168"	168"	144"	144"	144"
STRUCTURAL UNBALANCE	-7,450 Lbs.	-7,160 Lbs.	-6,820 Lbs.	-5,385 Lbs.	-4,860 Lbs.	-4,680 Lbs.	-4,300 Lbs.	-4,010 Lbs.
CRANKS	216130 MRO	192130 MRO	168108 MRO	168108 MRO	168108 MRO	144108 MRO	144108 MRO	144108 MRO
C'Bal., Cranks Only	1,875	3,365	-975	460	985	3,090	3,470	3,760
4 No. OOROL Counterweights	22,150	25,445	18,620
8 No. OOSL Aux. Weights	34,110	38,475	30,180
4 No. 130RO Counterweights	21,605	24,850
4 No. 130D Counterweights	32,550	36,775
4 No. OORO Counterweights	17,990	20,920	14,605	16,040	16,565	21,690	22,065	22,355
4 No. OOS Aux. Weights	22,855	26,215	19,305	20,740	21,265	27,300	27,680
8 No. OOS Aux. Weights	27,720	31,510	24,005	25,440	25,965	32,910
4 No. ORO Counterweights	15,935	18,675	12,615	14,055	14,575	19,315	19,695	19,985
4 No. OS Aux. Weights	20,605	23,760	17,130	18,565	19,090	24,700	25,080
8 No. OS Aux. Weights	25,275	28,850	21,645	23,075	23,605	30,085
4 No. OARO Counterweights	13,595	16,130	10,510	11,945	12,470	16,795	17,180	17,470
4 No. OAS Aux. Weights	17,225	20,085	14,065	15,500	16,025	21,040	21,425	21,710
8 No. OAS Aux. Weights	20,855	24,040	17,620	19,055	19,580	25,285	25,670
4 No. 1RO Counterweights	10,970	13,275	7,965	9,400	9,925	13,755	14,135	14,425
4 No. 1S Aux. Weights	13,770	16,340	10,710	12,145	12,670	17,035	17,415	17,705
8 No. 1S Aux. Weights	16,570	19,365	13,455	14,890	15,415	20,315	20,695
4 No. 2RO Counterweights	9,430	11,590	6,460	7,895	8,420	11,965	12,345	12,635
4 No. 2S Aux. Weights	12,135	14,535	9,125	10,560	11,085	15,145	15,525	15,815
8 No. 2S Aux. Weights	14,840	17,480	11,790	13,225	13,750	18,325	18,705	*18,995
4 No. 3CRO Counterweights	7,910	9,940	5,015	6,450	6,975	10,240	10,620	10,910
4 No. 3BS Aux. Weights	10,515	12,775	7,595	9,030	9,555	13,320	13,700	13,990
8 No. 3BS Aux. Weights	13,120	15,610	10,175	11,610	12,135	16,400	16,780	*17,070
4 No. 5ARO Counterweights	6,200	8,085	3,365	4,800	5,325	8,270	8,650	8,940
4 No. 5A Aux. Weights	7,950	9,985	5,110	6,555	7,080	10,365	10,745	11,035
8 No. 5A Aux. Weights	9,700	11,885	6,850	8,310	8,835	12,460	12,840	*13,130
4 No. 5CRO Counterweights	5,050	6,820	2,220	3,655	4,180	6,895	7,275	7,565
4 No. 5C Aux. Weights	6,620	8,530	3,795	5,230	5,755	8,790	9,160	9,450
8 No. 5C Aux. Weights	8,190	10,240	5,370	6,805	7,330	10,665	11,045	*11,335
4 No. 6RO Counterweights	4,285	5,985	1,445	2,880	3,405	5,970	6,350	6,640
4 No. 6 Aux. Weights	5,190	6,975	2,355	3,790	4,315	7,060	7,440	7,730
8 No. 6 Aux. Weights	6,095	7,965	3,265	4,700	5,225	8,150	8,530	8,820
4 No. 7RO Counterweights	3,400	5,025	565	2,000	2,525	4,925	5,305	5,595
4 No. 7 Aux. Weights	4,085	5,770	1,255	2,690	3,215	5,745	6,125	6,415
8 No. 7 Aux. Weights	4,770	6,515	1,945	3,380	3,905	6,565	6,945	7,235

UNIT	M-320D-305-100	M-320D-256-100	M-228D-256-100	M-228D-173-100	M-228D-246-86	M-228D-213-86 M-160D-213-86	M-160D-173-86	M-114D-143-86
STROKE	100"	100"	100"	100"	86"	86"	86"	86"
STRUCTURAL UNBALANCE	-3,700 Lbs.	-3,470 Lbs.	-3,285 Lbs.	-3,175 Lbs.	-2,140 Lbs.	-2,040 Lbs.	-1,930 Lbs.	-1,535 Lbs.
CRANKS	100108 MR	100108 MR	100108 MR	100108 MR	8686 MR	8686 MR	8686 MR	8662 MR
C'Bal., Cranks Only	4,660	4,890	5,075	5,185	2,715	2,815	2,925	1,525
4 No. 1RO Counterweight	19,440	19,670	19,850	19,960	15,600	15,700	15,810	9,525
4 No. 1S Aux. Weights	23,980	24,210	24,395	19,565	19,665	19,775	11,980
4 No. 2RO Counterweights	16,955	17,185	17,370	17,480	13,480	13,580	13,690	8,270
4 No. 2S Aux. Weights	21,360	21,590	21,775	17,335	17,435	17,545	10,690
4 No. 3CRO Counterweights	14,560	14,790	14,975	15,085	11,495	11,595	11,705	7,200
4 No. 3BS Aux. Weights	18,830	19,060	19,245	19,355	15,280	15,380	15,490	9,640
4 No. 5ARO Counterweights	11,840	12,070	12,255	12,365	9,190	9,290	9,400	5,880
4 No. 5A Aux. Weights	14,740	14,970	15,155	15,265	11,890	11,990	12,100	7,650
4 No. 5CRO Counterweights	9,935	10,165	10,350	10,460	7,495	7,595	7,705	4,770
4 No. 5C Aux. Weights	12,545	12,775	12,960	13,070	9,860	9,955	10,070	6,375
4 No. 6RO Counterweights	8,655	8,885	9,070	9,180	6,435	6,535	6,645	4,080
4 No. 6 Aux. Weights	10,160	10,390	10,575	10,685	7,840	7,940	8,050	5,045
8 No. 6 Aux. Weights	11,665	11,895	12,080	12,190	9,245	6,010
4 No. 7RO Counterweights	7,200	7,430	7,615	7,725	5,095	5,195	5,305	3,180
4 No. 7 Aux. Weights	8,340	8,570	8,755	8,865	6,160	6,260	6,370	3,925
8 No. 7 Aux. Weights	9,480	9,710	9,895	10,005	7,225	4,680

*8 Type S Aux. Weights will not clear Belt Cover on M-320D unit.

MARK II COUNTERBALANCE DATA

All Counterbalance Shown In Lbs., Effective At Polished Rod With Weights At Maximum Position, **Including Structural Unbalance.**

See Example below.

UNIT	M-456D-365-120	M-640D-305-120 M-456D-305-120 M-320D-305-120	M-456D-256-120	M-320D-256-120	M-228D-256-120	M-320D-213-120	M-228D-213-120
STROKE	120"	120"	120"	120"	120"	120"	120"
STRUCTURAL UNBALANCE	-4,510 Lbs.	-4,130 Lbs.	-3,840 Lbs.	-3,620 Lbs.	-3,435 Lbs.	-3,560 Lbs.	-3,235 Lbs.
CRANKS	120108 MR	120108 MR	120108 MR	120108 MR	120108 MR	120108 MR	120108 MR
C'Bal. Cranks Only	1,990	2,370	2,660	2,880	3,070	2,940	3,270
4 No. ORO Counterweights	21,065	21,445	21,735	21,955	22,140
4 No. OS Aux. Weights	27,395	27,775
4 No. OARO Counterweights	18,105	18,485	18,775	18,995	19,180	19,055	19,380
4 No. OAS Aux. Weights	23,095	23,475	23,765	23,985	24,170
8 No. OAS Aux. Weights	28,085	*28,465
4 No. 1RO Counterweights	14,530	14,910	15,200	15,420	15,605	15,480	15,805
4 No. 1S Aux. Weights	18,385	18,765	19,055	19,275	19,460	19,335	19,660
8 No. 1S Aux. Weights	22,240	*22,620	22,910
4 No. 2RO Counterweights	12,425	12,805	13,095	13,315	13,500	13,375	13,700
4 No. 2S Aux. Weights	16,165	16,545	16,855	17,055	17,240	17,115	17,440
8 No. 2S Aux. Weights	19,905	*20,285	20,575
4 No. 3CRO Counterweights	10,395	10,775	11,065	11,285	11,470	11,345	11,670
4 No. 3BS Aux. Weights	14,015	14,395	14,685	14,905	15,090	14,965	15,290
8 No. 3BS Aux. Weights	17,635	*18,015	18,305
4 No. 5ARO Counterweights	8,085	8,465	8,755	8,975	9,160	9,035	9,360
4 No. 5A Aux. Weights	10,545	10,925	11,215	11,435	11,620	11,495	11,820
8 No. 5A Aux. Weights	13,005	*13,385	13,675
4 No. 5CRO Counterweights	6,470	6,845	7,140	7,360	7,545	7,420	7,745
4 No. 5C Aux. Weights	8,685	9,060	9,355	9,575	9,755	9,630	9,960
8 No. 5C Aux. Weights	10,900	*11,275	11,570
4 No. 6RO Counterweights	5,385	5,765	6,055	6,275	6,460	6,335	6,660
4 No. 6 Aux. Weights	6,660	7,040	7,330	7,550	7,735	7,610	7,935
8 No. 6 Aux. Weights	7,035	8,315	8,605	8,825	9,010	8,885	9,210
4 No. 7RO Counterweights	4,150	4,530	4,820	5,040	5,225	5,100	5,425
4 No. 7 Aux. Weights	5,115	5,495	5,785	6,005	6,190	6,065	6,390
8 No. 7 Aux. Weights	6,080	6,460	6,750	6,970	7,155	7,030	7,355

* 8 Type S Aux. Weights will not clear Belt Cover on M-320D Unit.

UNIT	M-228D-200-74	M-160D-200-74	M-228D-173-74 M-160D-173-74	M-114D-173-74	M-114D-143-74	M-114D-173-64 M-114D-143-64
STROKE	74"	74"	74"	74"	74"	64"
STRUCTURAL UNBALANCE	-1,960 Lbs.	-1,890 Lbs.	-1,860 Lbs.	-1,820 Lbs.	-1,440 Lbs.	-1,420 Lbs.
CRANKS	7486 MR	7486 MR	7486 MR	7486 MR	7462 MR	6462 MR
C'Bal., Cranks Only	3,685	3,755	3,785	3,825	2,230	2,845
4 No. 2RO Counterweights	15,990	16,060	16,090	16,130	9,890	11,580
4 No. 2S Aux. Weights	12,630	14,710
4 No. 3CRO Counterweights	13,720	13,790	13,820	13,860	8,670	10,190
4 No. 3BS Aux. Weights	18,045	18,115	18,145	18,185	11,445	13,355
4 No. 5ARO Counterweights	11,085	11,155	11,185	11,225	7,170	8,485
4 No. 5A Aux. Weights	14,080	14,150	14,180	14,220	9,180	10,775
4 No. 5CRO Counterweights	9,145	9,215	9,245	9,285	5,910	7,045
4 No. 5C Aux. Weights	11,845	11,915	11,945	11,985	7,730	9,125
4 No. 6RO Counterweights	7,935	8,005	8,035	8,075	5,130	6,150
4 No. 6 Aux. Weights	9,540	9,610	9,640	9,680	6,225	7,400
8 No. 6 Aux. Weights	11,145	11,285	7,320	8,650
4 No. 7RO Counterweights	6,400	6,470	6,500	6,540	4,105	4,985
4 No. 7 Aux. Weights	7,625	7,695	7,725	7,765	4,950	5,950
8 No. 7 Aux. Weights	8,850	8,990	5,795	6,915

EXAMPLE:

A M-456D-305-144 with 4 No. ORO Counterweights and 4 No. OS Auxiliary Weights would have a maximum counterbalance effect of 25,080 lbs. in the 144" stroke. (See other examples, pages 16 and 17.)

Structural Unbalance with a negative (-) sign indicates a walking beam assembly that is heavy on the well end.

MARK II PUMPING UNIT SPECIFICATIONS

UNIT DESIGNATION	M-1824D-427-216 M-1280D-427-216	M-912DS-365-216	M-912D-305-216	M-1280D-427-192 M-912DS-427-192	M-912D-305-192 M-640D-305-192 M-456D-305-192	M-912DS-427-168	M-912D-365-168
POLISHED ROD CAPACITY, LBS.	42,700	36,500	30,500	42,700	30,500	42,700	36,500
STROKE LENGTH, INCHES	216, 192, 167	216, 191, 167	216, 192, 167	192, 168, 144	192, 168, 144	168, 150, 131	168, 149, 130
WALKING BEAM	24" x 131 Lbs.	24" x 131 Lbs.	24" x 131 Lbs.	24" x 131 Lbs.	24" x 131 Lbs.	24" x 131 Lbs.	24" x 104 Lbs.
CRANK PIN BEARING	1SC	1SC	1SC	1SC	1SC	1SC	1SC
SAMSON POST BEARING	P19	P19	P19	P19	P19	P19	P18
CROSS YOKE BEARING	C232	C232	C232	C232	C232	C232	C22 C
WIRELINE HANGER	1 $\frac{3}{8}$ " x 16" Ctrs.	1 $\frac{3}{8}$ " x 16" Ctrs.	1 $\frac{3}{8}$ " x 16" Ctrs.	1 $\frac{3}{8}$ " x 16" Ctrs.	1 $\frac{3}{8}$ " x 16" Ctrs.	1 $\frac{3}{8}$ " x 16" Ctrs.	1 $\frac{3}{8}$ " x 12" Ctrs.
CRANKS	216130 MRO	216130 MRO	216130 MRO	192130 MRO	192130 MRO	168108 MRO	168108 MRO

UNIT DESIGNATION	M-912D-305-168 M-640D-305-168 M-456D-305-168	M-912D-365-144 M-640D-365-144 M-456D-365-144	M-912D-305-144 M-640D-305-144 M-456D-305-144	M-640D-256-144 M-456D-256-144 M-320D-256-144	M-456D-365-120	M-640D-305-120 M-456D-305-120 M-320D-305-120	M-456D-256-120 M-320D-256-120 M-228D-256-120
POLISHED ROD CAPACITY, LBS.	30,500	36,500	30,500	25,600	36,500	30,500	25,600
STROKE LENGTH, INCHES	168, 149, 130	144, 128, 112	144, 128, 112	144, 128, 112	120, 104, 88	120, 104, 88	120, 104, 88
WALKING BEAM	24" x 84 Lbs.	24" x 84 Lbs.	24" x 84 Lbs.	21" x 68 Lbs.	24" x 84 Lbs.	24" x 84 Lbs.	21" x 68 Lbs.
CRANK PIN BEARING	1SC	1SC	2SC	2SC	1SC	2SC	2SC
SAMSON POST BEARING	P18	P18	P18	P18	P18	P18	P18
CROSS YOKE BEARING	C22 C	C232	C22 C	C22 C	C232	C22 C	C22C(M-228D,C20)
WIRELINE HANGER	1 $\frac{1}{4}$ " x 12" Ctrs.	1 $\frac{3}{8}$ " x 12" Ctrs.	1 $\frac{1}{4}$ " x 12" Ctrs.	1 $\frac{1}{8}$ " x 9" Ctrs.	1 $\frac{3}{8}$ " x 12" Ctrs.	1 $\frac{1}{4}$ " x 12" Ctrs.	1 $\frac{1}{8}$ " x 9" Ctrs.
CRANKS	168108 MRO	144108 MRO	144108 MRO	144108 MRO	120108 MR	120108 MR	120108 MR

UNIT DESIGNATION	M-320D-213-120 M-228D-213-120	M-320D-305-100	M-320D-256-100 M-228D-256-100	M-228D-173-100	M228D-246-86	M-228D-213-86 M-160D-213-86	M-160D-173-86
POLISHED ROD CAPACITY, LBS.	21,300	30,500	25,600	17,300	24,600	21,300	17,300
STROKE LENGTH, INCHES	120, 104, 88	100, 84, 68	100, 84, 68	100, 84, 68	86, 72.4, 58.6	86, 72.4, 58.6	86, 72.4, 58.6
WALKING BEAM	21" x 62 Lbs.	24" x 84 Lbs.	21" x 68 Lbs.	16" x 57 Lbs.	16" x 57 Lbs.	16" x 45 Lbs.	16" x 45 Lbs.
CRANK PIN BEARING	2SC	2SC	2SC	2SC	2SC	2SC	2SC
SAMSON POST BEARING	P18(M-228D-P16)	P18	P18	P16	P16	P16	P13
CROSS YOKE BEARING	C22C(M-228D,C19)	C22 C	C22C(M-228D,C20)	C19	C20N	C20N	C18N
WIRELINE HANGER	1 $\frac{1}{8}$ " x 9" Ctrs.	1 $\frac{1}{4}$ " x 12" Ctrs.	1 $\frac{1}{8}$ " x 9" Ctrs.	1 $\frac{1}{8}$ " x 9" Ctrs.	1 $\frac{1}{8}$ " x 9" Ctrs.	1" x 9" Ctrs.	1" x 9" Ctrs.
CRANKS	120108 MR	100108 MR	100108 MR	100108 MR	8686 MR	8686 MR	8686 MR

UNIT DESIGNATION	M-114D-143-86	M-228D-200-74 M-160D-200-74	M-228D-173-74 M-160D-173-74 M-114D-173-74	M-114D-143-74	M114D-173-64	M-114D-143-64
POLISHED ROD CAPACITY, LBS.	14,300	20,000	17,300	14,300	17,300	14,300
STROKE LENGTH, INCHES	86, 74, 62	74, 60.4, 46.8	74, 60.4, 46.8	74, 60, 46	64, 52, 40	64, 52, 40
WALKING BEAM	14" x 34 Lbs.	16" x 45 Lbs.	16" x 45 Lbs.	14" x 34 Lbs.	14" x 34 Lbs.	14" x 34 Lbs.
CRANK PIN BEARING	4SD	2SC	2SC (M-114D,3SD)	4SD	3SD	4SD
SAMSON POST BEARING	P13	P16	P13	P13	P13	P13
CROSS YOKE BEARING	C18N	C20N	C18N	C18N	C18N	C18N
WIRELINE HANGER	1" x 9" Ctrs.	1" x 9" Ctrs.	1" x 9" Ctrs.	1" x 9" Ctrs.	1" x 9" Ctrs.	1" x 9" Ctrs.
CRANKS	8662 MR	7486 MR	7486 MR	7462 MR	6462 MR	6462 MR

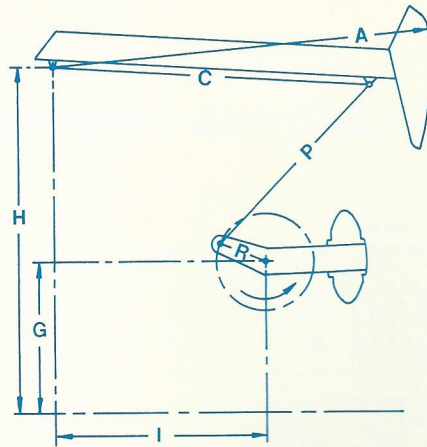


FIGURE 40

MARK II PUMPING UNIT API GEOMETRY DIMENSIONS

	A	C	I	P	H	G	R1, R2, R3	PHASE ANGLE	S.U.	T.F. @ (90° - α) / STROKE LENGTH
M-1824D-427-216	384	306	228	234.375	329.875	115.875	80.06, 71.06, 62.06	22	-7450	93.736/216
M-1280D-427-216	384	306	228	234.375	329.875	115.875	80.06, 71.06, 62.06	22	-7450	93.736/216
M-912D-305-216	384	306	228	234.375	329.875	115.875	80.06, 71.06, 62.06	22	-7450	93.736/216
M-912DS-365-216	384	306	228	234.375	329.875	115.875	80.06, 71.06, 62.06	22	-7450	93.736/216
M-1280D-427-192	384	306	228	228.06	329.875	115.875	71.69, 62.69, 53.69	19.5	-7160	86.069/192
M-912DS-427-192	384	306	228	228.06	329.625	115.875	71.69, 62.69, 53.69	19.5	-7160	86.069/192
M-912D-305-192	384	306	228	228.06	329.875	115.875	71.69, 62.69, 53.69	19.5	-7160	86.069/192
M-640D-305-192	384	306	228	228.06	329.875	115.875	71.69, 62.69, 53.69	19.5	-7160	86.069/192
M-456D-305-192	384	306	228	228.06	329.875	115.875	71.69, 62.69, 53.69	19.5	-7160	86.069/192
M-912DS-427-168	334	270	202.56	196.5	276.875	93.875	63.56, 56.56, 49.56	19	-6820	75.24/168
M-912D-365-168	334	270	202.56	193.5	276.875	93.875	63.56, 56.56, 49.56	19	-5385	75.24/168
M-912D-305-168	334	270	202.56	193.5	276.875	93.875	63.56, 56.56, 49.56	19	-4860	75.24/168
M-640D-305-168	334	270	202.56	193.5	276.875	93.875	63.56, 56.56, 49.56	19	-4860	75.24/168
M-456D-305-168	334	270	202.56	193.5	276.875	93.875	63.56, 56.56, 49.56	19	-4860	75.24/168
M-912D-365-144	312	258	186	182.375	252.875	93.875	53.75, 47.75, 41.75	23	-4680	63.023/144
M-640D-365-144	312	258	186	182.375	252.875	93.875	53.75, 47.75, 41.75	23	-4680	63.023/144
M-456D-365-144	312	258	186	182.375	252.875	93.875	53.75, 47.75, 41.75	23	-4680	63.023/144
M-912D-305-144	312	258	186	182.375	252.875	93.875	53.75, 47.75, 41.75	23	-4300	63.023/144
M-640D-305-144	312	258	186	182.375	252.875	93.875	53.75, 47.75, 41.75	23	-4300	63.023/144
M-456D-305-144	312	258	186	182.375	252.875	93.875	53.75, 47.75, 41.75	23	-4300	63.023/144
M-640D-256-144	312	258	186	182.375	252.875	93.875	53.75, 47.75, 41.75	23	-4010	63.023/144
M-456D-256-144	312	258	186	182.375	252.875	93.875	53.75, 47.75, 41.75	23	-4010	63.023/144
M-320D-256-144	312	258	186	182.375	252.875	93.875	53.75, 47.75, 41.75	23	-4010	63.023/144
M-456D-365-120	312	258	186	173.75	252.875	93.875	45.13, 39.13, 33.13	24	-4510	53.616/120
M-640D-305-120	312	258	186	173.75	252.875	93.875	45.13, 39.13, 33.13	24	-4130	53.616/120
M-456D-305-120	312	258	186	173.75	252.875	93.875	45.13, 39.13, 33.13	24	-4130	53.616/120
M-320D-305-120	312	258	186	173.75	252.875	93.875	45.13, 39.13, 33.13	24	-4130	53.616/120
M-456D-256-120	312	258	186	173.75	252.875	93.875	45.13, 39.13, 33.13	24	-3840	53.616/120
M-320D-256-120	312	258	186	173.75	252.875	93.875	45.13, 39.13, 33.13	24	-3620	53.616/120
M-228D-256-120	312	258	186	173.75	252.875	93.875	45.13, 39.13, 33.13	24	-3435	53.616/120
M-320D-213-120	312	258	186	173.75	252.875	93.875	45.13, 39.13, 33.13	24	-3560	53.616/120
M-228D-213-120	312	258	186	173.75	252.875	93.875	45.13, 39.13, 33.13	24	-3235	53.616/120
M-320D-305-100	312	258	186	173.75	252.875	93.875	37.63, 31.63, 25.63	24	-3700	45.492/100
M-320D-256-100	312	258	186	173.75	252.875	93.875	37.63, 31.63, 25.63	24	-3470	45.492/100
M-228D-256-100	312	258	186	173.75	252.875	93.875	37.63, 31.63, 25.63	24	-3285	45.492/100
M-228D-173-100	312	258	186	173.75	252.875	93.875	37.63, 31.63, 25.63	24	-3175	45.492/100
M-228D-246-86	222	186	124	135.75	188.375	73	31.5, 26.5, 21.5	24.5	-2140	38.328/86
M-228D-213-86	222	186	124	135.75	188.375	73	31.5, 26.5, 21.5	24.5	-2040	38.328/86
M-160D-213-86	222	186	124	135.75	188.375	73	31.5, 26.5, 21.5	24.5	-2040	38.328/86
M-160D-173-86	222	186	124	135.75	188.375	73	31.5, 26.5, 21.5	24.5	-1930	38.328/86
M-114D-143-86	189	162	111	112.94	147.5	52.25	32.25, 27.75, 23.25	27	-1535	36.974/86
M-228D-200-74	222	186	124	130.5	188.375	73	27.25, 22.25, 17.25	24.5	-1960	33.523/74
M-160D-200-74	222	186	124	130.5	188.375	73	27.25, 22.25, 17.25	24.5	-1890	33.523/74
M-228D-173-74	222	186	124	130.5	188.375	73	27.25, 22.25, 17.25	24.5	-1860	33.523/74
M-160D-173-74	222	186	124	130.5	188.375	73	27.25, 22.25, 17.25	24.5	-1860	33.523/74
M-114D-173-74	222	186	124	130.5	188.375	73	27.25, 22.25, 17.25	24.5	-1820	33.523/74
M-114D-143-74	189	162	111	107.94	147.5	52	27.94, 23.44, 18.94	27	-1440	32.56/74
M-114D-173-64	189	162	111	107.94	147.5	52	24.19, 19.69, 15.19	28	-1420	28.547/64
M-114D-143-64	189	162	111	107.94	147.5	52	24.19, 19.69, 15.19	28	-1420	28.547/64

LUFKIN AIR BALANCED PUMPING UNITS

1. Perfect counterbalance with finger-tip control.
2. Lower installation cost.
3. Compact and portable; ideal for well testing.
4. Small size and lighter weight make it ideal for export.
5. Stroke lengths to 25 feet for high volume production from great depths.

These are some of the outstanding advantages of LUFKIN AIR BALANCED PUMPING UNITS. These units employ compressed air to counterbalance the well load rather than beam weights or crank weights. The air system has been so simplified that the only continuously operating parts are the balance cylinder and piston. The reservoir capacity of the cylinder is enlarged by a steel receiver which moves with the cylinder as a unit.

On engine-driven units, when the system is in need of air, an automatic regulator engages an air operated clutch (driven by one belt from the unit sheave) and replaces any lost air. The operator sets regulator, initially, at a pressure sufficient to counterbalance well load, and this pressure is maintained automatically. Should the load change appreciably, a slight adjustment of this regulator will restore perfect counterbalance.

A safety shut-off switch is available, which will ground out engine, or shut off motor, if pressure should exceed a preset figure or fall below a minimum pre-set figure.

For units pumping with electricity, a separate motor-driven compressor assembly is standard equipment.

Since the Lufkin Air Balanced Units are approximately 35% shorter and 40% lighter than crank-type units, they are ideal for use as portable or test units, and for installation on piling or superstructures. Since changing counterbalance effect is a matter of adjusting a valve, the air balanced unit is ideal for use in testing wells.

All the ruggedness and simplicity of the conventional Lufkin Pumping Units are incorporated in the design of the Lufkin Air Balanced Pumping Unit.

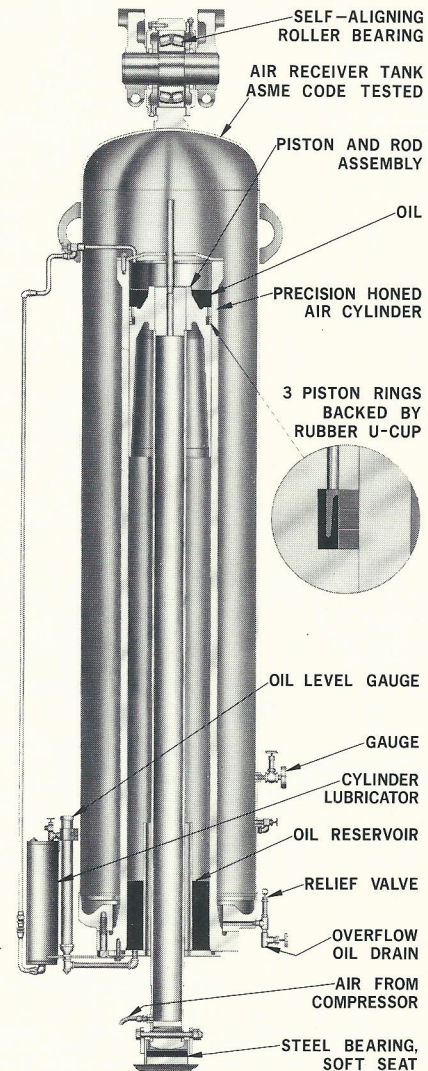


FIGURE 41



FIGURE 42

Mobile A-456D-365-120 Air Balanced Unit, Multi-Cylinder Engine Drive. This trailer-mounted unit with prime mover and diesel fuel tank built integral is ideal for test purposes.

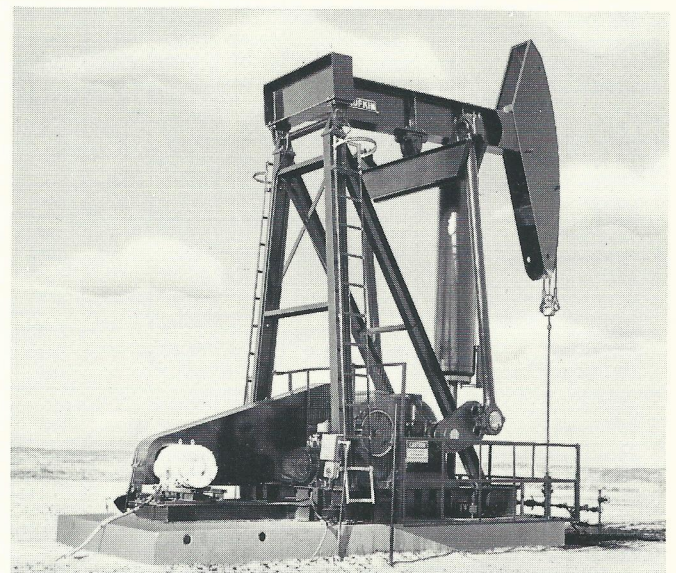


FIGURE 43

A-456D-305-144 Air Balanced Unit, Electric Motor Drive.

**LUFKIN AIR BALANCED PUMPING UNITS
GENERAL DIMENSIONS**

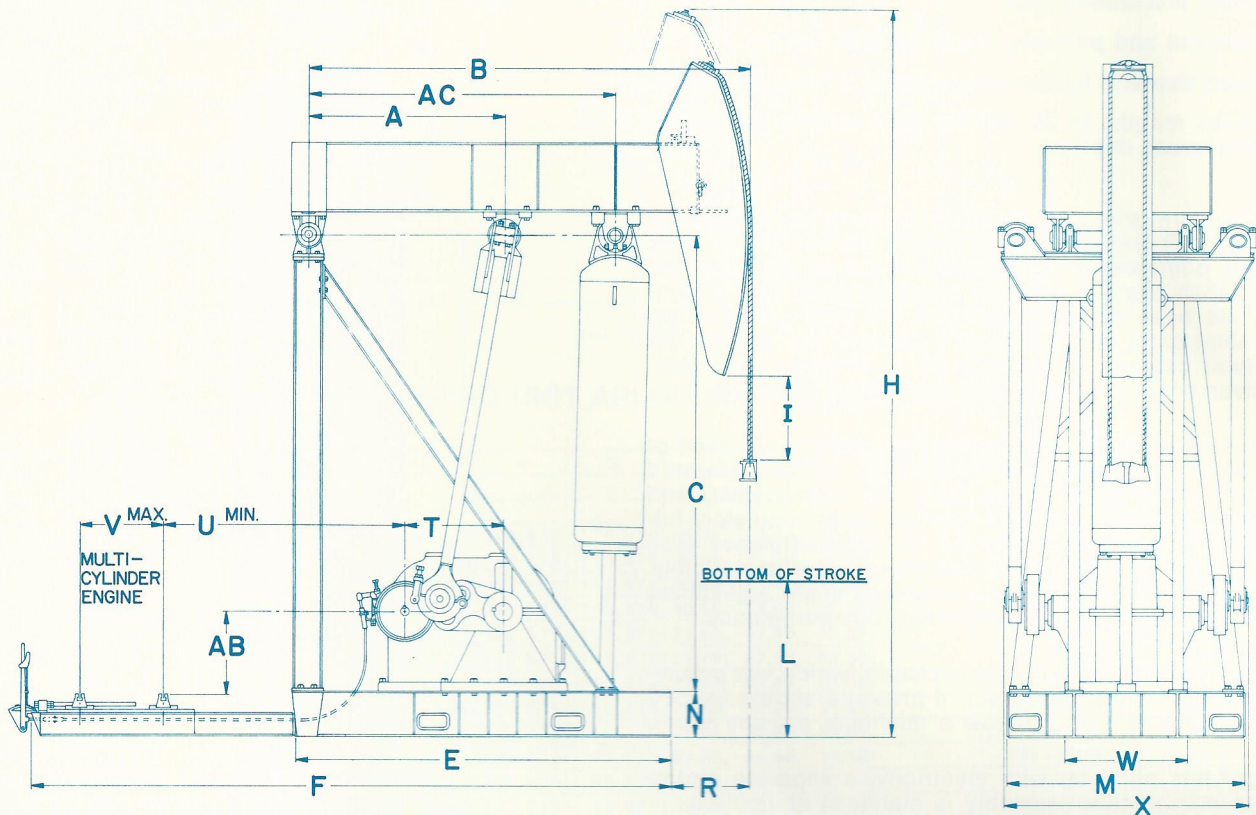


FIGURE 44

UNIT	A	B	C	E	F	H	I	L	M	N	R	T	U	V	W	X	AB	AC
A-2560D-470-240	11'-2 1/2"	28'-0"	25'-3 1/2"	*	31'-7 1/4"	46'-6 1/2"	19 3/8"	54"	8'-10"	21"	51 1/16"	70"	8'-4 3/8"	46 1/2"	66 1/4"	10'-10 5/8"	39 1/8"	19'-5 1/2"
A-1824D-470-240	"	"	"	*	"	"	"	"	8'-0"	"	"	58 7/8"	9'-3 1/2"	"	50 1/4"	9'-7 5/8"	33 1/8"	"
A-1824D-427-216	10'-1 1/2"	25'-8"	23'-6"	22'-0 7/8"	29'-6 7/8"	43'-0"	20 5/8"	56 1/8"	7'-11 1/2"	"	48"	"	8'-0"	"	"	"	"	14'-3 1/2"
A-1824D-427-192	"	23'-0"	21'-0"	19'-4 7/8"	26'-10 7/8"	38'-8"	19 3/8"	50 1/8"	"	"	"	"	"	"	"	"	"	"
A-1280D-470-240	11'-2 1/2"	28'-0"	25'-3 1/2"	*	31'-7 1/4"	46'-6 1/2"	"	54"	8'-0"	"	51 1/16"	52 1/2"	9'-9 7/8"	"	"	9'-1 5/8"	"	19'-5 1/2"
A-1280D-427-216	10'-1 1/2"	25'-8"	23'-6"	22'-0 7/8"	29'-6 7/8"	43'-0"	20 5/8"	56 1/8"	7'-11 1/2"	"	48"	"	8'-6 3/8"	"	"	"	"	14'-3 1/2"
A-1280D-427-192	"	23'-0"	21'-0"	19'-4 7/8"	26'-10 7/8"	38'-8"	19 3/8"	50 1/8"	"	"	"	"	"	"	"	"	"	"
A-1280D-305-168	7'-4"	19'-3"	20'-4"	14'-10 1/2"	22'-0 1/2"	35'-6"	17 5/8"	65 1/4"	"	16 1/8"	59"	"	7 1/4"	40 1/2"	"	8'-11 1/8"	36 3/8"	10'-11 1/2"
A-912D-470-240	11'-2 1/2"	28'-0"	25'-3 1/2"	*	31'-7 1/4"	46'-6 1/2"	19 3/8"	54"	8'-0"	21"	51 1/16"	48 1/2"	10'-1 7/8"	46 1/2"	50"	8'-6 5/8"	33 1/8"	19'-5 1/2"
A-912D-427-216	10'-1 1/2"	25'-8"	23'-6"	22'-0 7/8"	29'-6 7/8"	43'-0"	20 5/8"	56"	7'-11 1/2"	"	48"	"	9'-1 3/8"	"	"	"	27 1/8"	14'-3 1/2"
A-912D-427-192	"	23'-0"	21'-0"	19'-4 7/8"	26'-10 7/8"	38'-8"	19 3/8"	50"	"	"	"	"	"	"	"	"	"	"
A-912D-305-168	7'-4"	19'-3"	20'-4"	14'-10 1/2"	22'-0 1/2"	35'-6"	17 5/8"	65 1/4"	"	16 1/8"	59"	"	6'-3 3/4"	40 1/2"	"	8'-4 1/8"	30 3/8"	10'-11 1/2"
A-912D-427-144	"	16'-8"	17'-10"	12'-3 1/2"	19'-5 1/2"	31'-3 1/2"	19 3/8"	56"	"	"	"	"	"	"	"	"	"	"
A-640D-305-168	"	19'-3"	20'-4"	14'-10 1/2"	22'-0 1/2"	35'-6"	17 5/8"	65 1/4"	"	"	"	41 1/2"	6'-11 3/4"	"	46 3/4"	"	28 3/8"	"
A-640D-427-144	"	16'-8"	17'-10"	12'-3 1/2"	19'-5 1/2"	31'-2 1/2"	19 3/8"	56"	"	"	"	"	"	"	"	"	"	"
A-640D-305-144	6'-5"	17'-4"	"	12'-11 1/4"	20'-1 1/4"	31'-0"	21 1/8"	54 7/8"	7'-7"	"	57"	"	7 1/4"	"	"	"	"	9'-10"
A-640D-365-120	"	14'-7"	15'-7"	10'-11 3/4"	18'-13 1/4"	27'-0"	22 1/2"	50"	"	"	47 1/2"	"	"	"	"	"	"	"
A-456D-305-144	"	17'-4"	17'-10"	12'-11 1/4"	20'-1 1/4"	31'-0"	21 1/8"	54 7/8"	"	"	57"	38 3/8"	6'-2 1/8"	"	"	"	"	"
A-456D-365-120	"	14'-7"	15'-7"	10'-11 3/4"	18'-13 1/4"	27'-0"	22 1/2"	50"	"	"	47 1/2"	"	"	"	"	"	"	"
A-456D-256-120	69"	15'-4"	"	11'-11 3/4"	19'-13 1/4"	"	17 1/4"	56 1/8"	7'-1 1/2"	"	53"	"	"	"	"	"	"	8'-11"
A-320D-256-120	70"	"	"	11'-3 1/4"	18'-11 1/4"	"	"	56"	"	"	"	"	"	"	34"	71 1/4"	43 1/4"	7'-3 3/8"
A-320D-305-100	"	12'-11"	13'-4"	10-0 1/4"	17'-8 1/4"	23'-4"	25 1/2"	40 3/8"	"	"	39"	"	"	"	"	"	"	30 1/8"
A-228D-173-100	56"	12'-7"	12'-5"	8'-3 1/4"	14'-9"	22'-3"	15"	40 1/2"	6'-1 1/2"	"	56"	30"	47"	"	37 1/4"	6'-8 3/8"	29 1/8"	7'-3 1/2"
A-228D-246-86	"	10'-11"	"	"	"	21'-3"	18 1/8"	50 3/4"	"	"	36"	"	"	"	"	"	"	"
A-160D-200-74	50"	10'-0"	11'-9"	7'-11"	14'-6 3/4"	19'-3"	18 1/8"	49 1/2"	"	9 3/4"	35 1/2"	26"	54 3/4"	48"	32"	69 7/8"	15 7/8"	6'-5 1/2"
A-114D-173-64	48"	9'-7"	11'-0"	7'-5 1/2"	14'-5 3/4"	17'-8"	20 3/8"	50 3/8"	6-3 3/4"	"	36"	24"	62"	46"	25 1/4"	66 7/8"	11 7/8"	6'-0 1/2"

* Portable Base is Standard. One Piece and Portable Bases Available on All Units.

NOTE: Do not use above dimensions for foundation. Request foundation plan.

RATING CHART

UNIT	Polish Rod Load Class, Lbs.	Stroke Length, Inches	Piston Dia., Inches	Walking Beam Size	Wireline Hanger Dia. & Centers	*Floating Hub Sheave Sizes, P.D. Inches	Bearings			
							Crank Pin	Equal-izer	Samson Post	Air Tank
A-2560D-470-240	47,000	240-200	14 1/2	36 x 16 1/2 @ 245#	1 3/8" x 16"	68" (16D)	OT	E32	P19	334
A-1824D-470-240	"	"	"	"	"	40, 46, 51, 55, 68 (11D)	"	E26	"	"
A-1824D-427-216	42,700	216-190-162	"	33 x 15 3/4 @ 201#	"	"	"	"	"	"
A-1824D-427-192	"	192-168-144	"	"	"	"	"	"	"	"
A-1280D-470-240	47,000	240-200	"	36 x 16 1/2 @ 245#	"	40, 46, 51, 55, 68 (10D)	"	"	"	"
A-1280D-427-216	42,700	216-190-162	"	33 x 15 3/4 @ 201#	"	"	"	"	"	"
A-1280D-427-192	"	192-168-144	"	"	"	"	"	"	"	"
A-1280D-305-168	30,500	168-141-118	13	27 x 14 @ 161#	"	"	"	"	"	232
A-912D-470-240	47,000	240-200	14 1/2	36 x 16 1/2 @ 245#	"	28, 34, 40, 46, 51 (8D)	"	"	"	334
A-912D-427-216	42,700	216-190-162	"	33 x 15 3/4 @ 201#	"	"	"	"	"	"
A-912D-427-192	"	192-168-144	"	"	"	"	"	"	"	"
A-912D-305-168	30,500	168-141-118	13	27 x 14 @ 146#	"	28, 34, 40, 46, 51 (7D)	"	"	"	232
A-912D-427-144	42,700	144-120-100	"	27 x 14 @ 161#	"	"	"	"	"	"
A-640D-305-168	30,500	168-141-118	"	27 x 14 @ 146#	"	28, 34, 40, 46, 51 (6D)	"	"	"	"
A-640D-427-144	42,700	144-120-100	"	27 x 14 @ 161#	"	"	"	"	"	"
A-640D-305-144	30,500	"	12	27 x 14 @ 146#	1 1/4" x 12"	"	"	"	P18	326
A-640D-365-120	36,500	120-100-86	"	"	"	"	"	"	"	"
A-456D-305-144	30,500	144-120-100	"	"	"	28, 34, 40, 46, 51 (6D or 8C)	"	"	"	"
A-456D-365-120	36,500	120-100-86	"	"	"	"	"	"	"	"
A-456D-256-120	25,600	120-104-90	11	24 x 12 3/4 @ 104#	"	"	"	"	"	324
A-320D-256-120	"	"	"	"	"	25, 30, 36, 42, 47 1/4 (6C or 5D)	2T	E22	"	"
A-320D-305-100	30,500	100-86-74	"	"	"	"	"	"	"	"
A-228D-173-100	17,300	"	10	21 x 12 @ 101#	1 1/8" x 12"	24 1/4, 30, 36, 41 1/4 (5C or 4D)	"	"	P17	322
A-228D-246-86	24,600	86-74-64	"	"	"	"	"	"	"	"
A-160D-200-74	20,000	74-64-54	"	18 x 11 @ 76#	"	24 1/4, 29 1/4, 33 1/4, 38 (4C or 3D)	3TA	E19	P16	"
A-114D-173-64	17,300	64-54	8	16 x 8 1/2 @ 67#	1" x 9"	19 1/4, 24, 29 1/4, 33 1/4 (3C)	"	E18	"	318

* Standard Sheave Sizes Shown are Floating Hub Sheaves for Clutch Driven Compressors; Largest Size Shown is Maximum Available. For Electric Motor Driven Compressors, Use Solid Type Reducer Sheave as Shown in Crank Balance Unit Specifications.

COUNTERBALANCE DATA
Effective Counterbalance In Pounds Based On Average Pressure

UNIT	* Average Pressure, PSIG											
	150	175	200	225	250	275	300	325	350	375	400	410
A-2560D-470-240	2,870	5,740	8,610	11,480	14,350	17,220	20,090	22,960	25,830	28,700	29,850
A-1824D-470-240												
A-1280D-470-240												
A-912D-470-240												
A-1824D-427-216	920	3,220	5,520	7,820	10,120	12,420	14,720	17,020	19,320	21,620	23,920	24,830
A-1280D-427-216												
A-912D-427-216												
A-1824D-427-192	3,905	6,475	9,045	11,615	14,185	16,755	19,325	21,895	24,465	27,035	29,605	30,635
A-1280D-427-192												
A-912D-427-192												
A-1280D-305-168	2,810	4,700	6,585	8,475	10,365	12,250	14,140	16,030	17,915	19,805	21,695	22,450
A-912D-305-168												
A-640D-305-168												
A-912D-427-144	5,240	7,420	9,605	11,785	13,970	16,150	18,335	20,515	22,700	24,880	27,065	27,935
A-640D-427-144												
A-640D-305-144	3,520	5,125	6,725	8,330	9,935	11,540	13,145	14,745	16,350	17,955	19,560	20,200
A-456D-305-144												
A-640D-365-120	4,725	6,630	8,535	10,440	12,345	14,250	16,155	18,060	19,965	21,870	23,775	24,535
A-456D-365-120												
A-456D-256-120	4,035	5,415	6,795	8,175	9,560	10,940	12,320	13,700	15,085	16,465	17,845	18,400
A-320D-256-120												
A-320D-305-100	4,855	6,495	8,135	9,775	11,415	13,055	14,695	16,335	17,975	19,615	21,255	21,910
A-228D-173-100	2,925	4,060	5,195	6,335	7,470	8,610	9,745	10,885	12,020	13,160	14,295	14,750
A-228D-246-86	4,045	5,355	6,670	7,980	9,295	10,605	11,920	13,230	14,545	15,855	17,170	17,695
A-160D-200-74	4,410	5,680	6,945	8,215	9,480	10,750	12,015	13,285	14,550	15,820	17,085	17,595
A-114D-173-64	2,760	3,550	4,345	5,135	5,930	6,720	7,515	8,305	9,100	9,890	10,685	11,000

* Pressure Shown is Average Pressure Between Maximum and Minimum and Occurs at Approximately Beam Horizontal Position. For Counterbalance at Other Pressures Use Direct Interpolation.

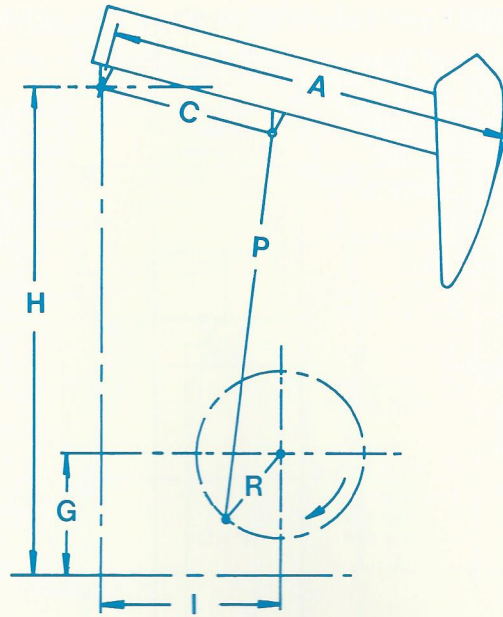


FIGURE 45

AIR BALANCED PUMPING UNIT API GEOMETRY DIMENSIONS

UNIT	A	C	I	P	H	G	R1, R2, R3	M	S
A-2560D-470-240	336	134.5	130	261.5	303.5	42	47, 39.44	114.8	150
A-1824D-470-240	336	134.5	130	267.5	303.5	36	47, 39.44	114.8	150
A-1280D-470-240	336	134.5	130	267.5	303.5	36	47, 39.44	114.8	150
A-912D-470-240	336	134.5	130	267.5	303.5	36	47, 39.44	114.8	150
A-1824D-427-216	308	121.5	114.5	246	282	36	41.75, 36.63, 32	92	140
A-1280D-427-216	308	121.5	114.5	246	282	36	41.75, 36.63, 32	92	140
A-912D-427-216	308	121.5	117.5	252	282	30	41.75, 36.63, 32	92	140
A-1824D-427-192	276	121.5	114.5	216	252	36	41.75, 36.63, 32	102.8	112
A-1280D-427-192	276	121.5	114.5	216	252	36	41.75, 36.63, 32	102.8	112
A-912D-427-192	276	121.5	117.5	222	252	30	41.75, 36.63, 32	102.8	112
A-1280D-305-168	231	88	84	208	244	36	31.25, 26.19, 22	75.54	112.81
A-912D-305-168	231	88	84	214	244	30	31.25, 26.19, 22	75.54	112.81
A-640D-305-168	231	88	85	216	244	28	31.25, 26.19, 22	75.54	112.81
A-912D-427-144	200	88	84	184	214	30	31.25, 26.19, 22	87.3	90
A-640D-427-144	200	88	85	186	214	28	31.25, 26.19, 22	87.3	90
A-640D-305-144	208	77	74.5	186	214	28	26.19, 22, 18.94	64.16	95.16
A-456D-305-144	208	77	74.5	186	214	28	26.19, 22, 18.94	64.16	95.16
A-640D-365-120	175	77	74.5	159	187	28	26.19, 22, 18.94	76.2	88
A-456D-365-120	175	77	74.5	159	187	28	26.19, 22, 18.94	76.2	88
A-456D-256-120	184	69	66	159	187	28	22, 18.94, 16.31	55.25	77
A-320D-256-120	184	70	68	159	187	28	22.38, 19.38, 16.75	55.25	77
A-320D-305-100	155	70	68	132	160	28	22.38, 19.38, 16.75	65.6	76
A-228D-173-100	151	56	54	122	149	27	18.25, 15.75, 13.75	45.49	85.75
A-228D-246-86	131	56	54	122	149	27	18.25, 15.75, 13.75	52.5	73
A-160D-200-74	120	50	48	114	141	27	15.25, 13.25, 11.25	50.7	63
A-114D-173-64	115	48	46.5	114	132	18	13.31, 11.25	31.7	63

**LUFKIN LOW-PROFILE PUMPING UNITS
GENERAL DIMENSIONS**

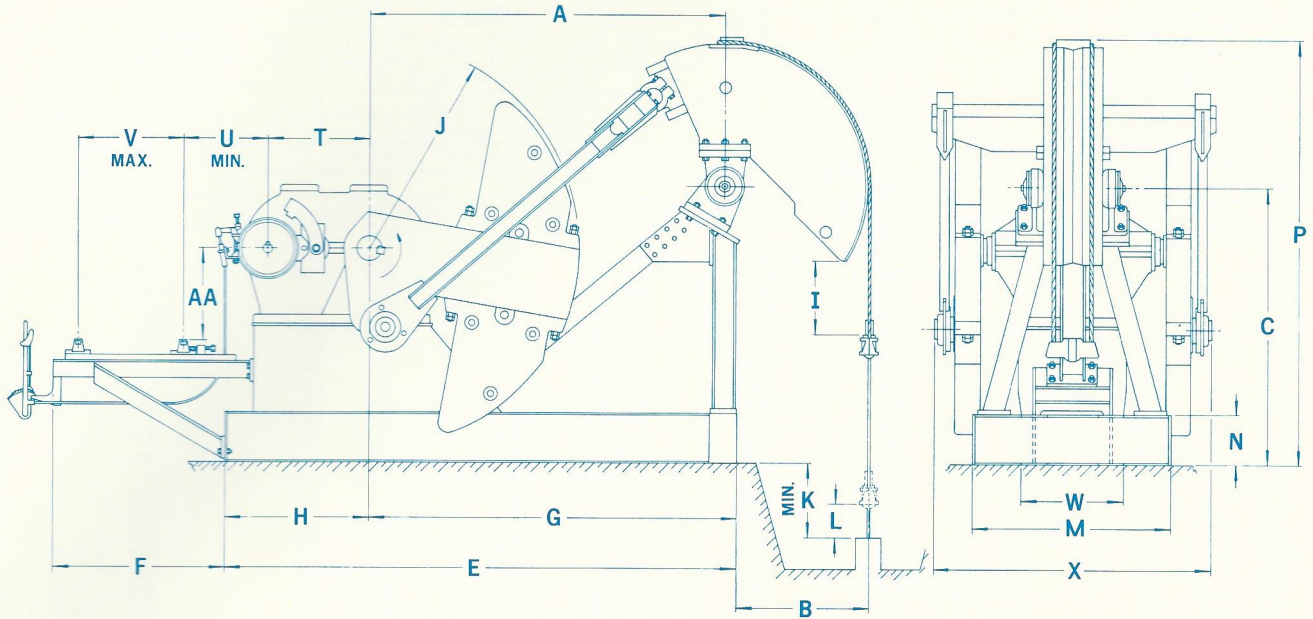


FIGURE 46

GENERAL DIMENSIONS

UNIT	A	B	C	E	F	G	H	I	J	K	L	M	N	P	T	U	V	W	X	AA
LP-320D-246-86	8'-6"	45 3/4"	7'-4"	13'-1 1/2"	52 3/4"	8'-9 1/2"	52"	10 1/2"	64"	24"	6"	51 3/4"	16 3/8"	11'-6"	34"	31 3/8"	31 1/4"	43"	7'-2"	40 7/8"
LP-228D-173-64	7'-10"	41 1/2"	6'-0"	11'-10 1/2"	"	8'-11 1/2"	45"	12"	56"	19"	6 3/8"	"	"	9'-11"	30"	29 1/2"	30"	37"	6'-6 1/2"	24 1/8"
LP-160D-173-64	"	"	"	11'-6"	40 3/8"	"	40 1/2"	"	"	"	"	"	"	26"	26"	17 1/8"	30 1/4"	32"	70 1/8"	28 9/16"
LP-114D-133-54	7'-0"	31 1/8"	66"	10'-2 1/4"	"	7'-3 1/4"	35"	17"	50"	"	6 1/8"	48 1/4"	12 1/4"	8'-6"	24"	13 5/8"	29 1/4"	25"	66 3/4"	22 9/16"

STRUCTURAL DATA

UNIT	LP-320D-246-86	LP-228D-173-64 LP-160D-173-64	LP-114D-133-54
POLISH ROD CAPACITY, LBS.	24,600	17,300	13,300
STROKE LENGTH, INCHES	86", 74", 64"	64", 54", 44"	54", 42", 36"
CRANK PIN BEARING	2SC	3SD	4SD
SAMSON POST BEARING	2LPTGA	2LPTGA	P19
EQUALIZER BEARING	1R	2RA	3R
WIRELINE HANGER	1 1/8" x 12" CTRS.	1" x 9" CTRS.	7/8" x 9" CTRS.
CRANKS	LP8664	LP6456	LP5450

COUNTERBALANCE DATA

UNIT	LP-320D-246-86			LP-228D-173-64 LP-160D-173-64			LP-114D-133-54		
STROKE	86"	74"	64"	64"	54"	44"	54"	42"	36"
STRUCTURAL UNBALANCE	240 Lbs.	240 Lbs.	240 Lbs.	100 Lbs.	100 Lbs.	100 Lbs.	305 Lbs.	305 Lbs.	305 Lbs.
C'BAL., CRANKS ONLY	4,835	5,415	6,040	3,700	4,100	4,985	2,940	3,585	4,080
4 No. 2RO Counterweights	12,130	13,635	15,245
4 No. 2S Aux. weights	14,745	16,580	18,545
8 No. 2S Aux. weights	17,360	19,525	21,845
4 No. 3CRO Counterweights	10,940	12,290	13,740
4 No. 3BS Aux. weights	13,570	15,255	17,060
8 No. 3BS Aux. weights	16,200	18,220	20,380
4 No. 5ARO Counterweights	9,455	10,615	11,865	8,850	9,820	11,970	7,945	9,820	11,260
4 No. 5A Aux. weights	11,305	12,700	14,200	10,915	12,115	14,770	9,950	12,320
8 No. 5A Aux. weights	13,155	14,785	16,535	12,980	14,410	11,955
4 No. 5CRO Counterweights	8,270	9,285	10,375	7,550	8,375	10,205	6,700	8,270	9,475
4 No. 5C Aux. weights	9,965	11,195	12,515	9,450	10,485	12,785	8,560	10,585	12,140
8 No. 5C Aux. weights	11,660	13,105	14,655	11,350	12,595	15,365	10,420	12,900
4 No. 6RO Counterweights	6,755	7,495	9,130	5,945	7,325	8,390
4 No. 6 Aux. weights	7,905	8,775	10,690	7,080	8,735	10,015
8 No. 6 Aux. weights	9,055	10,055	12,250	8,215	10,145	11,640
4 No. 7RO Counterweights	5,685	6,305	7,680	4,905	6,030	6,895
4 No. 7 Aux. weights	6,570	7,285	8,875	5,775	7,115	8,145
8 No. 7 Aux. weights	7,455	8,265	10,070	6,645	8,200	9,395

NOTE: Do no use above dimensions for foundation. Request foundation plan.

**LUFKIN BEAM BALANCED PUMPING UNIT ASSEMBLIES
STRUCTURAL SPECIFICATIONS AND DIMENSIONS**

See page 4 for GEAR Specifications

UNIT	B-P57D-76-54	B-P57D-109-48	B-P57D-89-48	B-P57D-89-42	B-P40D-89-48	B-P40D-89-42
Polished Rod Cap., #	7,600	10,900	8,900	8,900	8,900	8,900
Stroke Lengths, Ins.	54,40	48,36	48,36	42,32	48,36	42,32
Walking Beam	16" x 36 lbs.	16" x 45 lbs.	16" x 36 lbs.	16" x 36 lbs.	14" x 34 lbs.	14" x 34 lbs.
Equalizer Bearing	NYLATRON NSB BUSHINGS					
Center Bearing	NYLATRON NSB BUSHINGS					
Crank Pin Bearings	SPHERICAL ROLLER BEARINGS					
Wireline Hanger	3/4" x 6 1/2" CENTERS					
*1" thick Beam Wts., #	150	150	150	150	125	125
No. of Beam Weights	EFFECTIVE COUNTERBALANCE AT POLISHED ROD. LBS.					
0	270	470	380	425	400	435
1	500	750	645	695	640	675
2	725	1025	910	965	880	915
3	950	1295	1170	1230	1115	1155
4	1175	1565	1430	1495	1350	1390
5	1395	1835	1685	1755	1585	1625
6	1615	2100	1940	2015	1815	1855
7	1830	2360	2190	2270	2040	2085
8	2045	2620	2440	2525	2265	2310
9	2255	2880	2685	2775	2490	2535
10	2465	3135	2930	3025	2710	2755
11	2675	3385	3170	3270	2930	2975
12	2880	3635	3410	3515	3145	3195
13	3085	3885	3645	3755	3360	3410
14	3285	4130	3880	3995	3570	3625
15	3485	4370	4110	4230	3780	3835
16	3685	4610	4340	4465	3990	4040
17	3880	4850	4565	4695	4195	4250
18	4075	5085	4790	4925	4400	4455
19	4265	5315	5010	5150	4600	4655
20	4455	5545	5230	5375	4795	4855
21	4640	5775	5445	5595	4995	5050
22	4825	6000	5660	5815	5190	5250
23	5010	6220	5870	6030	5380	5440
24	5190	6440	6080	6245	5570	5630
25	5365	6660	6285	6455	5755	5820
26	5545	6875	6490	6665	5940	6005
27	5720	7085	6690	6870	6125	6190
28	5890	7295	6890	7075	6305	6375
29	6060	7505	7085	7275	6485	6550
30	6230	7710	7280	7475	6660	6730
31		7910			6835	6905
32		8110			7005	7080
33		8310			7175	7250
34		8505			7345	7415
35		8695			7510	7585
36		8885			7670	7750

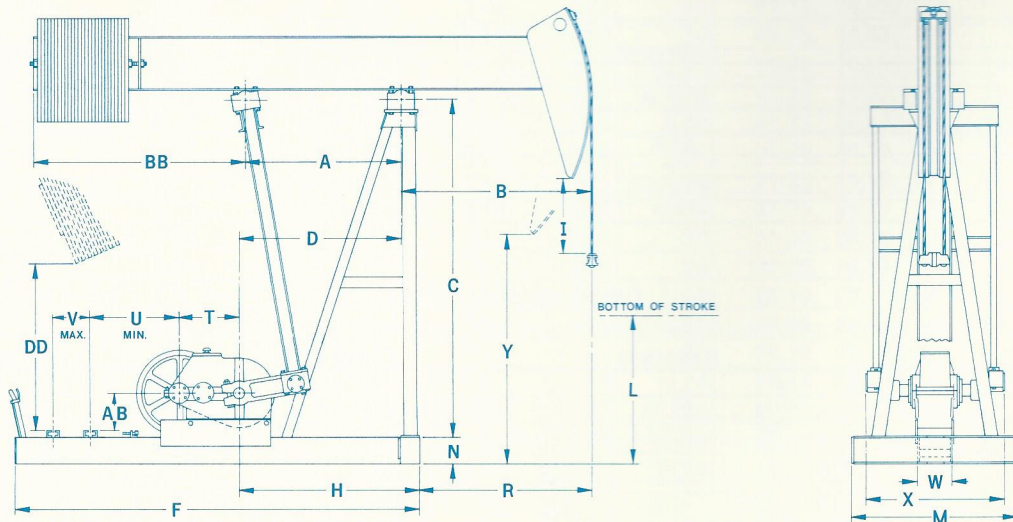


FIGURE 47

GENERAL DIMENSIONS

Unit	A	B	C	D	F	H	I	L	M	N	R	T	U	V	W	X	Y	AB	BB	DD
B-P57D-76-54	46	71	98 1/4	48	12' 0"	52 7/8	8 1/2	37	44	8	66 1/8	17 3/4	18 1/2	43	10 1/2	50 1/4	55 1/2	10 3/4	63	46 1/2
B-P57D-109-48	44	60	"	"	"	"	16	36 3/8	"	"	55 1/8	"	"	"	"	"	62 3/8	"	67 1/2	40 1/2
B-P57D-89-48	"	"	"	"	"	"	"	"	"	"	"	"	"	"	"	"	"	"	63	45 1/2
B-P57D-89-42	49 1/2	"	"	"	"	"	"	38 5/8	"	"	"	"	"	"	"	"	63 7/8	"	59 1/2	49 3/4
B-P40D-89-48	41	56	88 3/4	46	11' 10"	50 7/8	"	26 1/8	"	"	51 1/8	"	"	"	"	"	53 3/8	"	67 1/2	32 1/2
B-P40D-89-42	46	"	"	"	"	"	15 7/8	28 3/8	"	"	"	"	"	"	"	"	54 3/8	"	63	39 1/4

* Base Shown is For Electric Motor Only.

NOTE: Do not use above dimensions for foundation. Request foundation plan.

**LUFKIN BEAM BALANCED PUMPING UNIT ASSEMBLIES
STRUCTURAL SPECIFICATIONS AND DIMENSIONS**

See page 4 for GEAR Specifications

UNIT	B-57D-109-48	B-57D-109-42	B-40D-76-42	B-40D-89-36	B-25D-67-36	B-25D-53-30	B-16D-53-30	B-16D-53-24
Polished Rod Cap., #	10,900	10,900	7,600	8,900	6,700	5,300	5,300	5,300
†Stroke Lengths, Ins.	48, 36	42, 32	42, 32	36, 28	36, 24	30, 25	30, 25	24, 20
Walking Beam	16" x 45 Lbs.	16" x 45 Lbs.	14" x 34 Lbs.	14" x 34 Lbs.	14" x 34 Lbs.	10" x 26 Lbs.	10" x 26 Lbs.	10" x 22 Lbs.
Equalizer Bearing	BRONZE BUSHED, OIL BATH TYPE							
Center Bearing	BRONZE BUSHED, OIL BATH TYPE							
Crank Pin Bearings	BRONZE BUSHED, OIL BATH TYPE				SPHERICAL ROLLER BEARINGS			
Wireline Hanger	7/8" x 9" Ctrs.	7/8" x 6 1/2" Ctrs.	3/4" x 6 1/2" Ctrs.	3/4" x 6 1/2" Ctrs.	5/8" x 6 1/2" Ctrs.	1/2" x 5 1/2" Ctrs.	1/2" x 5 1/2" Ctrs.	1/2" x 5 1/2" Ctrs.
*1" thick Beam Wts., #	150	150	125	125	125	100	100	100
No. of Beam Weights	EFFECTIVE COUNTERBALANCE AT POLISHED ROD, LBS.							
0	400	550	420	550	300	170	170	265
1	700	880	660	830	520	345	345	470
2	1000	1205	895	1105	740	515	515	670
3	1300	1530	1130	1380	955	685	685	870
4	1595	1850	1365	1650	1170	850	850	1065
5	1890	2165	1595	1915	1380	1015	1015	1260
6	2180	2480	1825	2180	1590	1175	1175	1445
7	2490	2790	2050	2440	1795	1330	1330	1635
8	2760	3100	2275	2700	2000	1485	1485	1820
9	3045	3405	2495	2955	2200	1645	1645	2000
10	3325	3710	2715	3210	2400	1795	1795	2175
11	3605	4010	2930	3460	2595	1940	1940	2350
12	3885	4300	3145	3705	2790	2090	2090	2525
13	4160	4595	3360	3950	2980	2230	2230	2690
14	4435	4890	3570	4190	3170	2375	2375	2855
15	4705	5180	3780	4430	3355	2520	2520	3015
16	4975	5470	3985	4665	3540	2665	2665	3175
17	5240	5755	4190	4900	3720	2785	2785	3330
18	5505	6040	4390	5130	3900	2920	2920	3485
19	5765	6320	4590	5360	4075	3050	3050	3635
20	6025	6600	4790	5585	4245	3180	3180	3785
21	6280	6875	4985	5810	4415	3300	3300	3925
22	6535	7150	5180	6030	4580	3425	3425	4065
23	6785	7420	5370	6250	4745	3545	3545	4205
24	7035	7685	5560	6465	4905	3660	3660	4340
25	7280	7950	5745	6680	5065	3780	3780	
26	7525	8210	5930	6890	5220	3890	3890	
27	7770	8470	6110	7100	5375	4000	4000	
28	8010							
29	8250							
30	8485							

Note: * 3" thick Beam Weights optional for all Beam Balanced units.
† On B-25D-53-30 and B-16D, units, stroke length changes are obtained by moving equalizer bearing on beam.

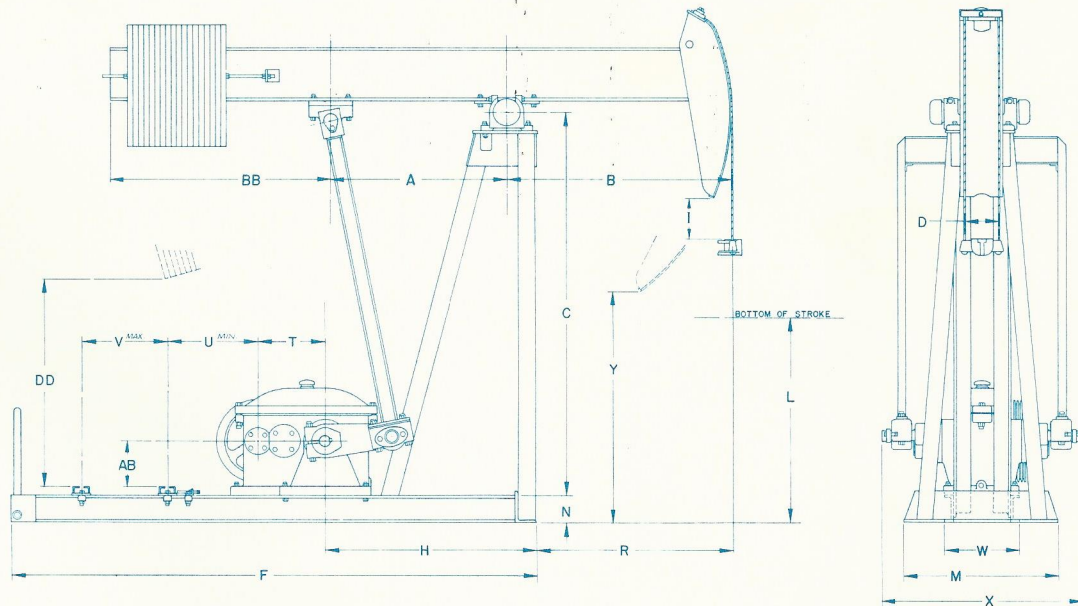


FIGURE 48

GENERAL DIMENSIONS

UNIT	A	B	C	D	F	H	I	L	M	N	R	T	U	V	W	X	Y	AB	BB	DD
B-57D-109-48	46	64	8'-9"	9	13'-3"	69	14 1/2	43 3/4	40 3/4	10	43	20	24 1/4	39 3/4	25	57 1/2	69 3/4	14 3/4	7'-1"	47 1/4
B-57D-109-42	"	56	"	6 1/2	"	"	15 1/2	51	"	"	35	"	"	75 1/2	"	"	75 1/2	"	6'-6"	50
*B-40D-76-42	"	"	8'-2 1/2"	"	11'-8 1/2"	61	"	42	38 1/2	8	41	17 1/2	19	34 1/4	20	50 3/4	67	10 3/4	63	50 3/4
*B-40D-89-36	"	48	"	"	"	"	13	50 1/2	"	"	33	"	"	72 1/2	"	"	72 1/2	"	61 3/4	51 1/4
B-25D-67-36	32	48	7'-0 1/2"	"	10'-4"	48	"	34 1/2	31	6	34	13 1/2	18	39	16 3/4	45	56 1/2	12	54 1/2	45
B-25D-53-30	33	41 1/4	70 1/2"	5 1/2	9'-7"	39	6	36	28 1/2	"	35 1/4	"	"	48	"	"	48	"	40	34 3/4
B-16D-53-30	"	"	"	"	8'-0 1/2"	"	"	35	"	5	35 3/4	12 3/4	10 1/2	25 1/4	13 3/4	35	47	8 1/2	"	"
B-16D-53-24	"	33	"	"	"	"	12 1/2	35 3/4	"	"	27	"	"	52 1/2	"	"	52 1/2	"	36	36 1/4

* Base Shown Is For Electric Motor Only, For Gas Engine Drive Dim. "F" is 13'-4", Dim. "U" Is 19, and Dim. "V" Is 53 1/4.

NOTE: Do not use above dimensions for foundation. Request foundation plan.

LUFKIN PUMPING UNITS NOMENCLATURE

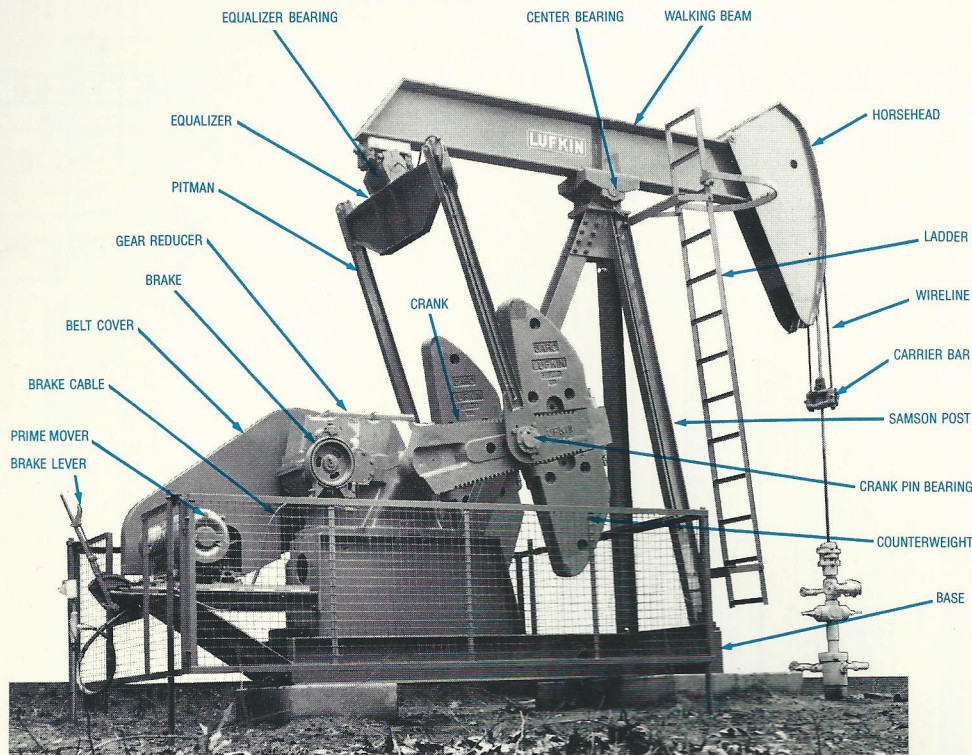


FIGURE 49
Conventional
Pumping Unit Nomenclature

Reprints Available
Request Forms
F-1079 A for Conventional
Pumping Unit,
F-1080 for Mark II Pumping Unit, and
F-1081 for Air Balanced
Pumping Unit

Also Available in Spanish

FIGURE 50
Air Balanced Pumping Unit

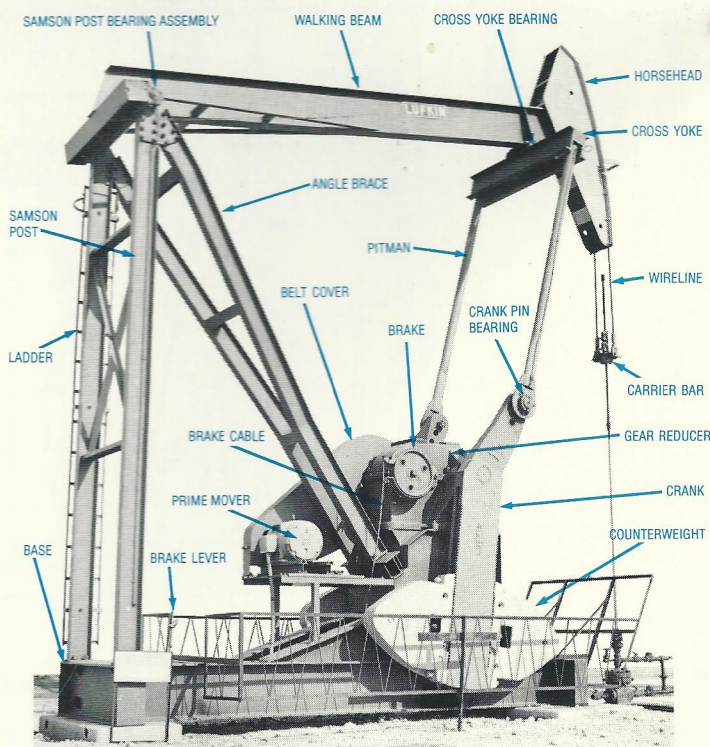
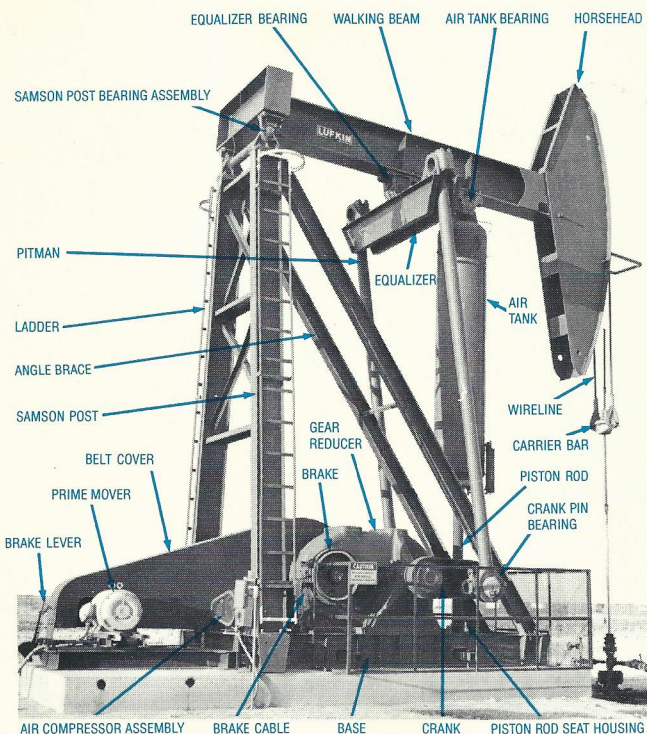
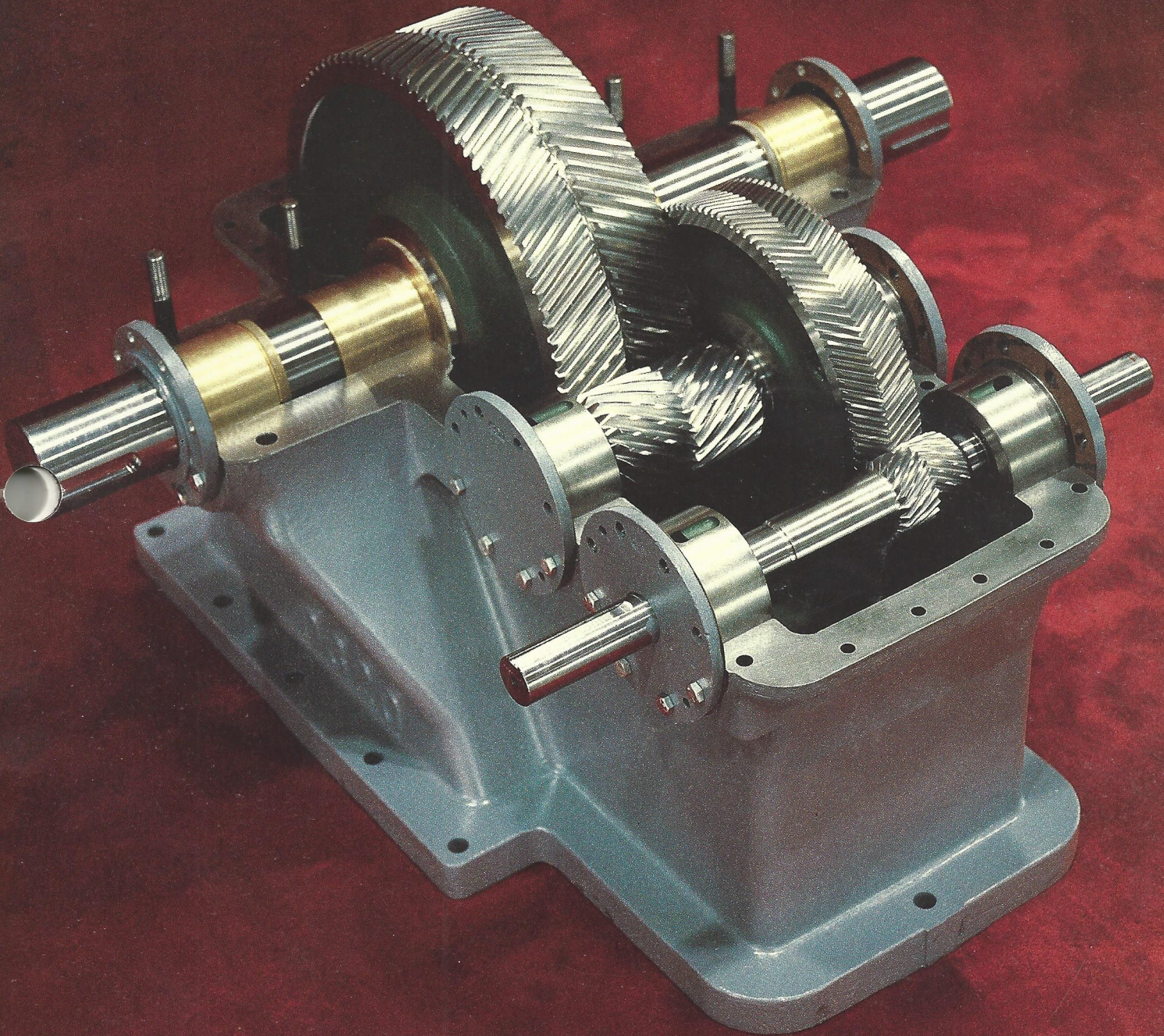


FIGURE 51
Mark II Pumping Unit

INSIDE THE HEART OF THE **LUFKIN** PUMPING UNIT



LUFKIN designed and manufactured Herringbone (Double Helical) Gears have proven to be the standard of excellence for pumping unit gear reducers. Herringbone Gears are less sensitive to mis-alignment and resist torque reversals better than other types of gears. Heavy-duty sleeve bushings on the crankshaft and straight roller bearings on the high speed and intermediate shafts need no adjustment at assembly or when field service is required. The nodular iron gears with high strength alloy pinion used by most manufacturers of pumping units were pioneered by LUFKIN over thirty (30) years ago.



LUFKIN

INDUSTRIES, INC.

LUFKIN, TEXAS