

Model 98RC Engine



OILWELL Model 98RC gas-gasoline engine is a single-cylinder, horizontal, four-cycle, heavy-duty power unit designed for continuous operation. Its balanced crankshaft and heavy flywheel assure smooth operation through a wide speed range.

Standard equipment includes condenser cooling (radiator and fan), combination gas-gasoline carburetor, rotating magneto with impulse coupling, single flywheel, safety-starting crank, and clutch power take-off. A 12-volt electric starting system is available if desired.

Features

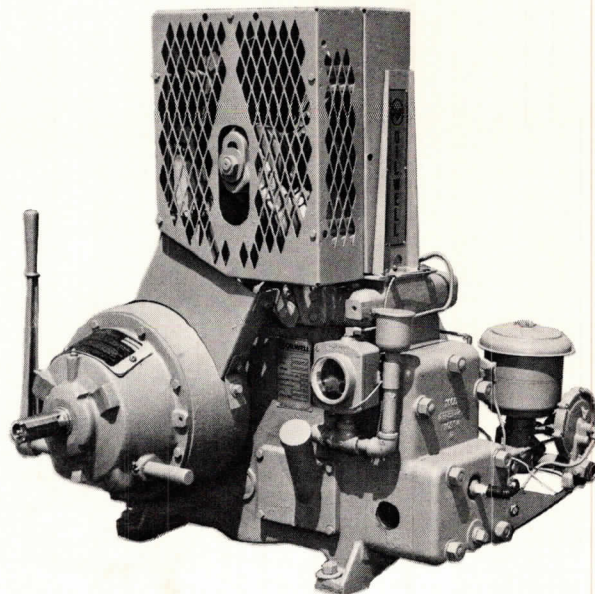
Forged-Steel Crankshaft with integral counterweights is mounted in large tapered roller bearings.

Aluminum Alloy Piston is fitted with three compression rings and one oil control ring for reduced liner wear and for full power. Light weight of this reciprocating part allows wide speed range for continuous operation.

Wet-Type Cylinder Liner is replaceable in the field. It is precision honed and equipped with two "O" rings for water seal and expansion.

Two-Piece Cylinder Head is cast iron with replaceable valve-stem guides, and valve seat inserts.

Valve Tappet Adjustments are made easily through two large, conveniently-placed inspection openings in the cylinder block.



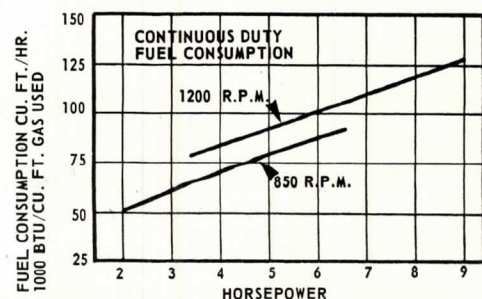
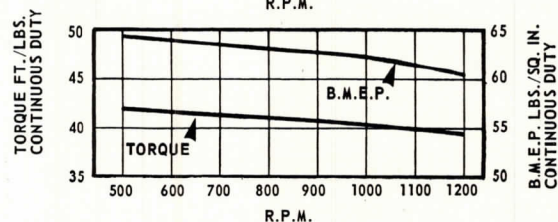
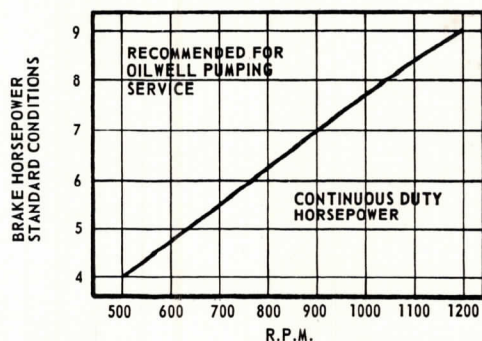
Special Combustion Chamber and connection passage in the cylinder head make possible the use of larger-than-conventional valves.

A Splash Flood System assures adequate lubrication of all moving parts. All parts requiring lubrication are enclosed within the crankcase.

Condenser-Type Cooling maintains uniform operating temperature and increases thermal efficiency.

Specifications

Bore	inches	5
Stroke	inches	5
Displacement	cu. in.	98
Speed Ranges	rpm	500/1,200
Gasoline Rating (Bare Engine) at:		
500 rpm	hp	4.4
750 rpm	hp	6.8
1,000 rpm	hp	9.0
1,200 rpm	hp	10.2
Natural Gas Rating (Condenser Cooled Engine) at:		
500 rpm	hp	4.0
750 rpm	hp	5.9
1,000 rpm	hp	7.8
1,200 rpm	hp	9.0
Rated Brake Mean Effective Pressure (Gasoline), 1,200 rpm	psi	69
Rated Brake Mean Effective Pressure (Natural Gas), 1,200 rpm	psi	62
Exhaust Connection (Pipe Size)	inches	1½
Gas Intake Connection (Pipe Size)	inch	¾
Oil Capacity	qts.	4
Water Capacity (Condenser Cooling)	gals.	2¾
Fuel Capacity (Gasoline)	gals.	4
Shipping Weight—Standard Equipment Only	pounds	710



We reserve the right to change specifications without incurring any obligation for equipment previously or subsequently sold.