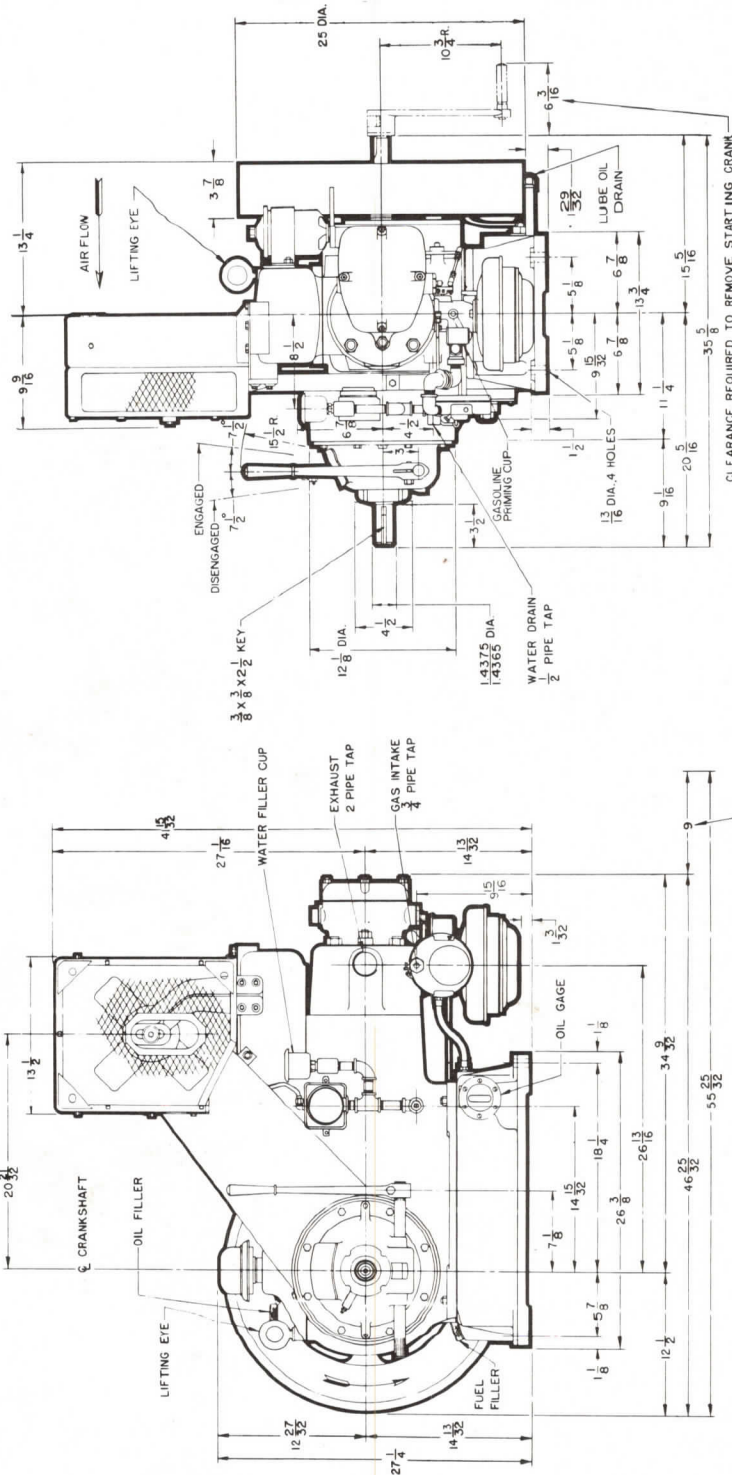


OILWELL Model B12RC Engine

NOTE: THESE DIMENSIONS ARE ACCURATE BUT SHOULD NOT BE USED FOR INSTALLATION UNLESS CERTIFIED.



OUTLINE DRAWING
E 14-2

CLEARANCE REQUIRED TO REMOVE STARTING CRANK

CLEARANCE REQUIRED TO REMOVE CYLINDER HEAD AND PISTON

INTERNATIONAL DISTRIBUTORS

USS OILWELL
Division of United States Steel

P.O. Box 478, Dallas, Texas 75221

USS and OILWELL are registered trademarks of United States Steel Corp.

USS USS OILWELL Supply Co., Ltd.
Subsidiary of United States Steel Corporation

Canada
MAIN SALES OFFICE:
810 Manulife House
603 Seventh Ave. S.W.
Calgary, Alberta T 2P 2T 5
Phone: 403/262-9501
TWX: 6108211382

USS USS OILWELL Supply Co. International, Inc.
Subsidiary of United States Steel Corporation

MAIN SALES OFFICE:
P.O. Box 1590, Three Allen Center
333 Clay Street, Suite 2140, Houston, Texas 77001
Phone: 713/751-5100 Cable: OILWELL INTL —HOUSTON

Europe, Africa, Middle East, Asia, South America,
Central America, Mexico, United Kingdom and Australia

OILWELL Model B12RC Engine

This gas-gasoline engine is a four-cycle, heavy-duty, medium-speed, single-cylinder power unit with conventional power take-off. Electric, 12-volt starting equipment is available. C-D type ignition system is standard.

It is designed for continuous operation with weather-resistant construction permitting out-of-door operation the year around without protective covering.

Features

Crankshaft is of heat-treated, forged steel, counter-balanced, and mounted in tapered roller bearings.

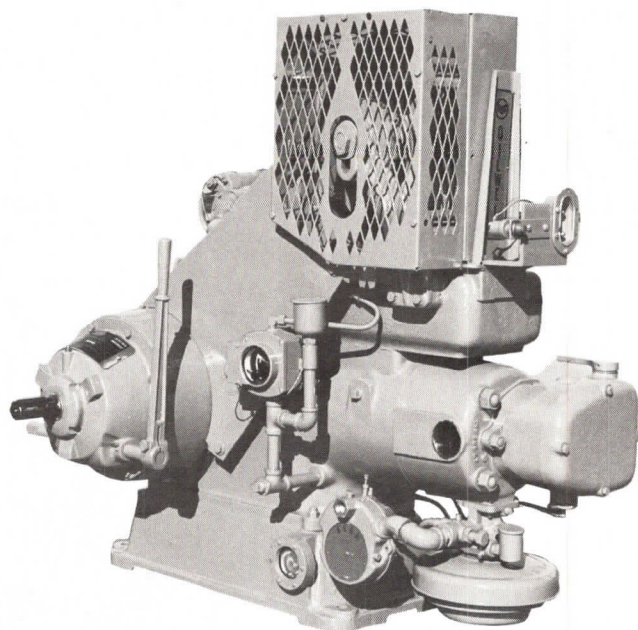
Piston is of aluminum alloy, precision ground, and fitted with four compression rings and two oil rings.

Cylinder Liner is of the wet type and precision honed. It can be replaced economically in the field.

Cylinder Head has large gas passages and is fitted with replaceable, alloy valve-seat inserts and valve guides.

Valves are heat-resistant alloy steel. Valve levers and push rods are entirely enclosed.

Ample Lubrication is assured by a combination pressure-feed and splash system.

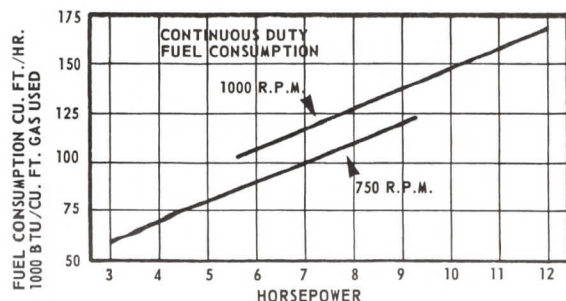
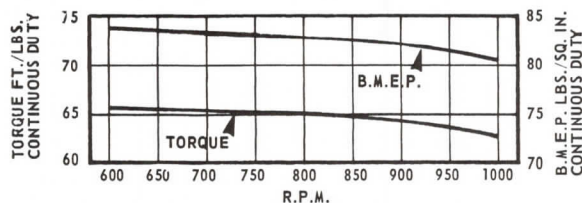
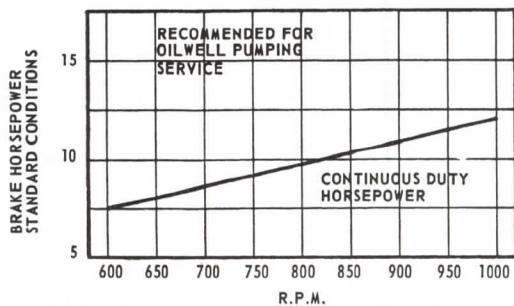


Condenser-Type Cooling provides uniform operating temperatures to assure good thermal efficiency.

Crankshaft and Camshaft are forged steel, and precision ground on all wearing surfaces.

Forged-Steel Connecting Rod is equipped with aluminum-alloy bearing inserts. Bearings are shim-adjusted and equipped with a built-in oil reservoir. Piston pin is full-floating type and rides in a bronze bushing.

Specifications



	English		Metric
Bore	5 inches		127 mm
Stroke	6 inches		152 mm
Displacement	118 cu. in.		1934 cm ³
Speed Range	600/1,000 rpm		600/1,000 r/min
Natural Gas Rating:			
600 rpm	7.5 hp	7.5 kW	5.59 kW
700 rpm	8.6 hp	8.6 kW	6.41 kW
800 rpm	10 hp	10 kW	7.46 kW
900 rpm	11 hp	11 kW	8.20 kW
1,000 rpm	12 hp	12 kW	8.95 kW
Rated Brake Mean Effective Pressure (Natural Gas)	80.5 psi	80.5 kPa	555 kPa
Exhaust Connection (Pipe Size)	2 inches	2 mm	51 mm
Gas Intake Connection (Pipe Size)	3/4 inches	3/4 mm	19 mm
Oil Capacity	1 3/4 gal.	1 3/4 litres	7 litres
Water Capacity (Condenser Cooling)	2 1/4 gal.	2 1/4 litres	9 litres
Shipping Weight — Standard Equipment Only	1,066 pounds	1,066 kg	484 kg

We reserve the right to change specifications without incurring any obligation for equipment previously or subsequently sold.