

Model E15RC Engine



OILWELL E15 single-cylinder, four-cycle engine runs on natural gas or gasoline. It is a heavy-duty, medium-speed power unit with conventional power take-off. This engine can be equipped with 12-volt electric starting system. Low tension ignition system is standard.

Condenser cooling (radiator and fan), combination gas-gasoline carburetor, rotating magneto with impulse coupling, single flywheel, safety-starting crank, and clutch power take-off are standard equipment.

Features

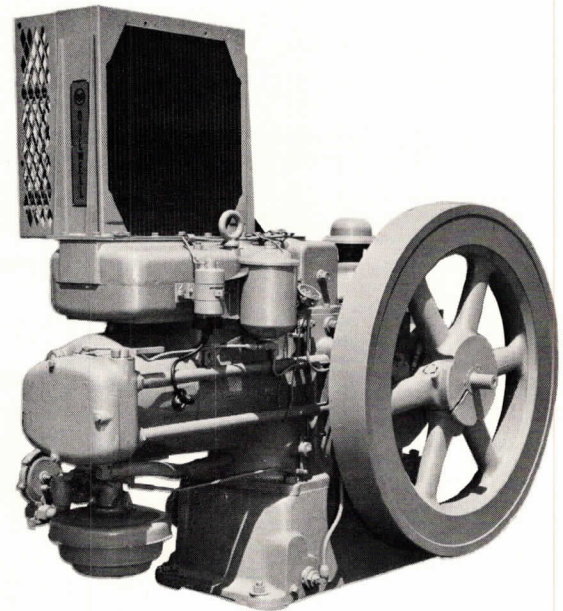
Forged Alloy Steel Crankshaft is counterbalanced and mounted in tapered roller bearings.

Cast Iron Piston has three compression and two oil control rings to provide for long cylinder life and minimum oil consumption. A full-floating, hardened and ground piston pin works in a replaceable bronze bushing.

A Precision-Honed Cylinder Liner is made of centrifugally cast, close-grain iron.

Cylinder Head with large inlet and exhaust ports is fitted with replaceable valve guides and valve seat inserts which are properly located and cooled to eliminate seat distortion.

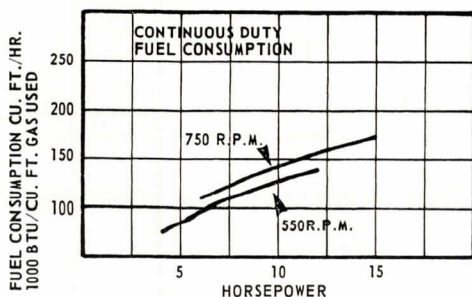
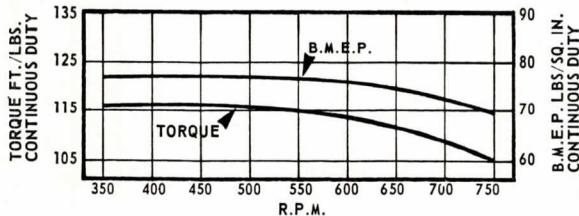
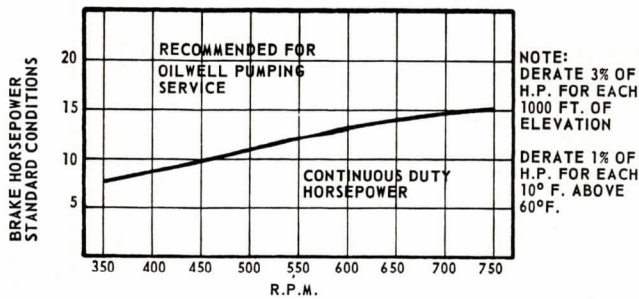
Valves are heat-resistant alloy steel.



Lubrication of all working parts is assured by a combination splash and pressure system. Crankshaft main bearings, gears, governor and cylinder liner are splash lubricated. Connecting rod bearing is lubricated by a splash system and by-pass filter system.

Condenser-Type Cooling System provides uniform engine temperatures and good thermal efficiency.

Connecting Rod is a steel forging fitted with a bronze piston-pin bushing, and aluminum-alloy insert-type crankpin bearing.



Specifications

Bore inches	6
Stroke inches	8
Displacement cu. in.	226
Speed Range rpm	350/750
Natural Gas Rating:		
350 rpm hp	7.7
450 rpm hp	10.0
550 rpm hp	12.1
650 rpm hp	14.0
750 rpm hp	15.0
Rated Brake Mean Effective Pressure (Natural Gas) psi	70
Exhaust Connection (Pipe Size) inches	2
Gas Intake Connection (Pipe Size) inch	¾
Oil Capacity qts.	11
Water Capacity (Condenser Cooling) qts.	13
Shipping Weight—Standard Equipment Only pounds	1,700

We reserve the right to change specifications without incurring any obligation for equipment previously or subsequently sold.