

Model F32A-RC Engine



OILWELL F32A is a four-cycle, single-cylinder, horizontal, condenser-cooled, gas-gasoline engine. It is completely weatherproof, making it a year-round performer without a protective enclosure. An electric, 12-volt starting system, air starting and C-D type ignition are available. Low tension ignition system is standard.

It is extremely smooth-running through its entire speed and horsepower range. This characteristic provides maximum flexibility of installation on structural-steel pumping unit bases.

Features

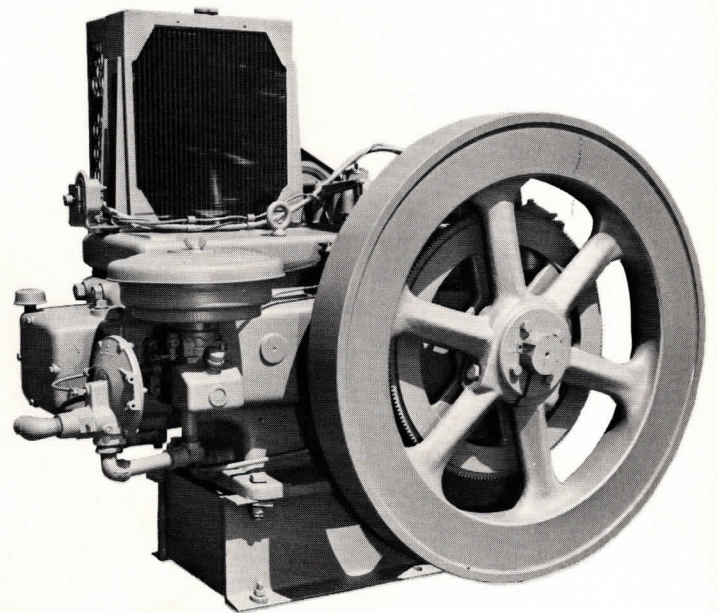
Forged Steel Crankshaft with removable counterweights is mounted in large, tapered-roller bearings.

Cast Iron Piston is fitted with three compression rings and two oil rings for reduced liner wear and full power.

Wet-Type Cylinder Liner is precision honed, can be installed in the field.

Cylinder Head has large integral water passages to provide ample cooling. Unrestricted inlet and exhaust passages assure maximum efficiency throughout the horsepower range.

Valve-in-Head Construction has a completely enclosed positive lubrication system to valve assembly. Valve guides, valve seats and valve rotators are replaceable for both intake and exhaust valves.



Lubrication is accomplished by an oil circulating pump operating through a high-pressure system in combination with a splash-flood system. A full-flow filter is standard equipment.

Condenser Type Cooling (radiator and fan) maintains uniform operating temperature and increases thermal efficiency.

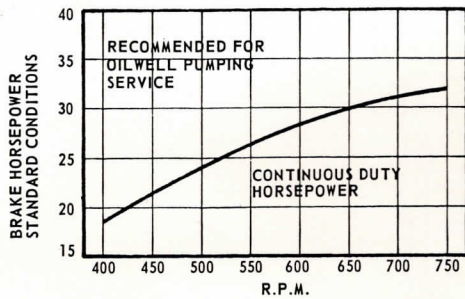
Specifications

Stroke inches 8
 Bore inches 8
 Displacement cu. in. 402
 Speed Range rpm 400/750
 Natural Gas Rating at:

400 rpm	hp	18½
450 rpm	hp	21¼
550 rpm	hp	26¼
600 rpm	hp	28¼
650 rpm	hp	30
750 rpm	hp	32

Rated Brake Mean Effective Pressure
 (Natural Gas) psi 84
 Exhaust Connection (Pipe Size) inches 3
 Gas Intake Connection (Pipe Size) inches 1
 Oil Capacity qts. 16
 Water Capacity (Condenser Cooling) gals. 7½
 Shipping Weight—Standard Equipment
 Only pounds 2,800

We reserve the right to change specifications without incurring any obligation for equipment previously or subsequently sold.



NOTE:
 DERATE 3% OF H.P.
 FOR EACH 1000 FT.
 OF ELEVATION
 DERATE 1% OF H.P.
 FOR EACH 10°F.
 ABOVE 60°F.

