

PUMP JACKS

**THE TERRELL MACHINE COMPANY  
INDUSTRIAL PRODUCTS DIVISION**

3000 SOUTH BOULEVARD BOX 240868  
CHARLOTTE, NORTH CAROLINA 28224  
TELEPHONE 704/525-7240

Terrell Machine Company  
 Charlotte, North Carolina

704/525-7240

*Bill Stone*

800-438-1371

Gear Box Specifications for Pump Jacks

Jack Size	Assembly Number	Weight	Center Distance	Ratio	Input Shaft	Output Shaft
6.4	GL3-AC-0002	85#	8.35	39.68/1	1-1/8" dia.	2" dia.
10	GL3-AC-001	85#	8.35	39.68/1	1-1/8" dia.	2" dia.
16	GP3-AC-001	195#	10.79	36.7/1	1-7/16" dia.	2-1/2" dia.
25						
40	GS3-AC-001	550#	16.28	35.0/1	1-1/2" dia.	3" dia. #1981
57	GS3-AC-001	550#	16.28	35.0/1	1-1/2" dia.	3" dia.

Specifications

A. Design

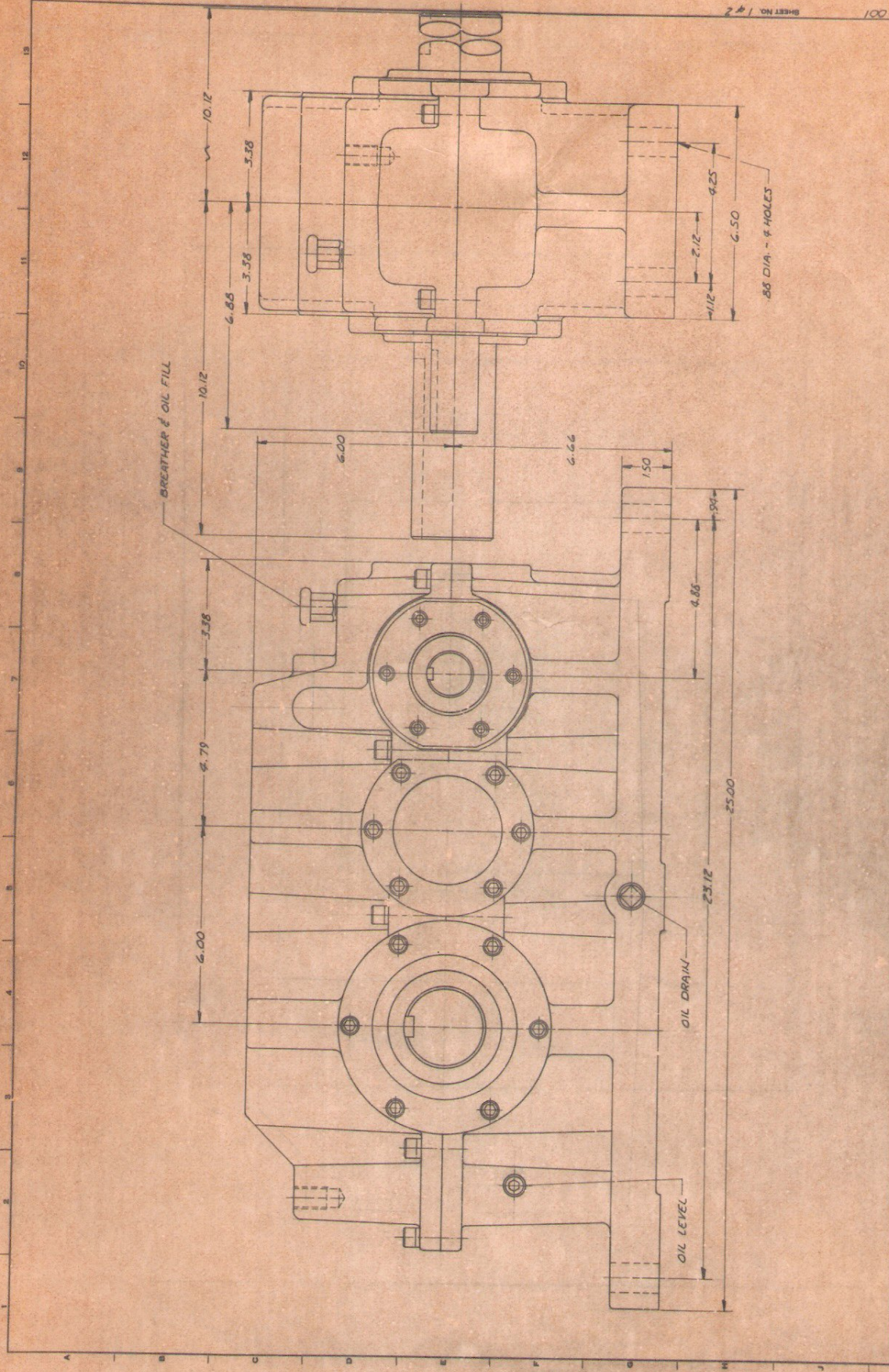
1. All helical gearing
2. Tapered roller bearings throughout
3. Mounting base cast integral with housing
4. Housings for 16-57 are two piece castings split horizontally

B. Materials

1. Gears - 8620 hardened to Rc58 min.
2. Shafts - Stressproof or 8620 hardened to Rc58 min.
3. Seals - Buna N, double lip
4. Housings - grey iron

16.32 O.A. shaft leg

17 1/2" long x 10" High  
 6" wide

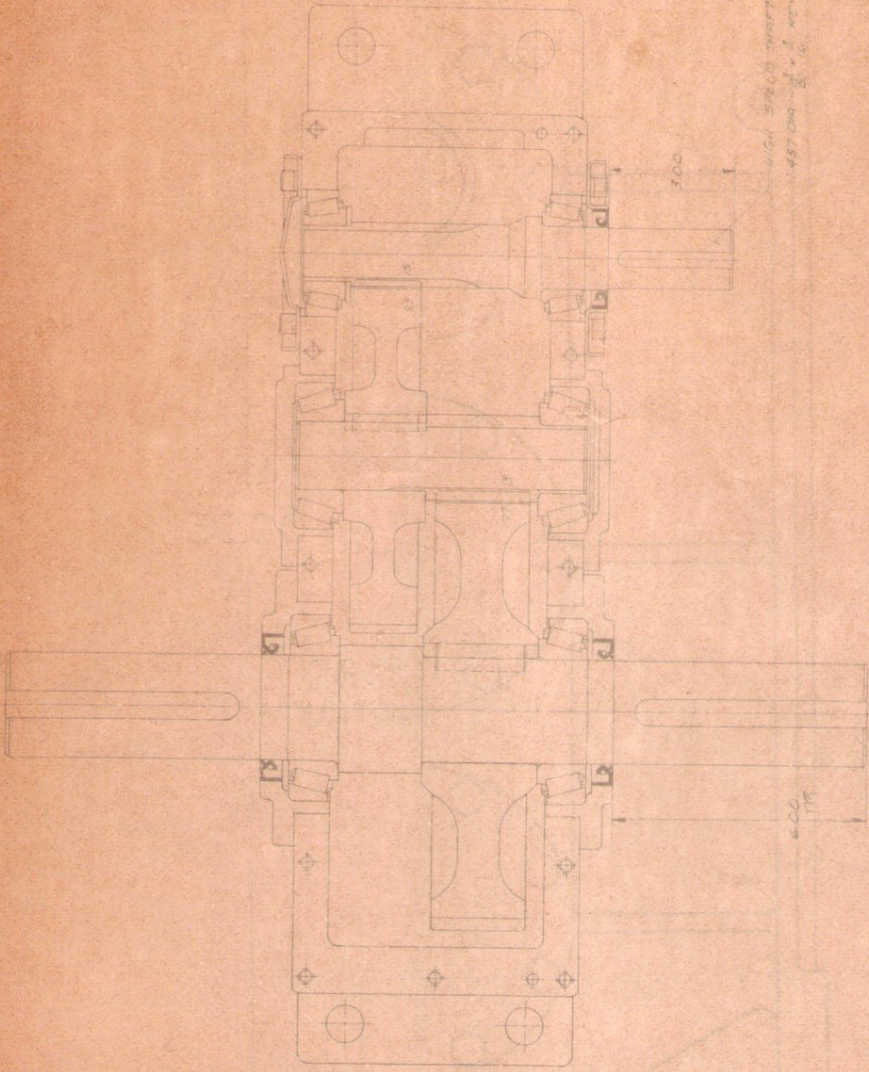


TR NO. E 47535 SHEET NO. 100 72 501

THE TERRELL MACHINE CO.  
 1000 W. 10th St., S.W., Okla. City, Okla.  
 SEE B.O.M. FOR PARTS LIST  
 APPROVED BY: [Signature]

DATE: [Blank] TIME: [Blank] FULL: [Blank]

APPROVED BY: [Signature] DATE: [Blank]



HIGH SPEED SHAFT  
1.4870 DIA.  $\frac{1}{8}$  IN. DIA. HOLE

LOW SPEED SHAFT  
2.5000 DIA.  $\frac{1}{8}$  IN. DIA. HOLE

3.00

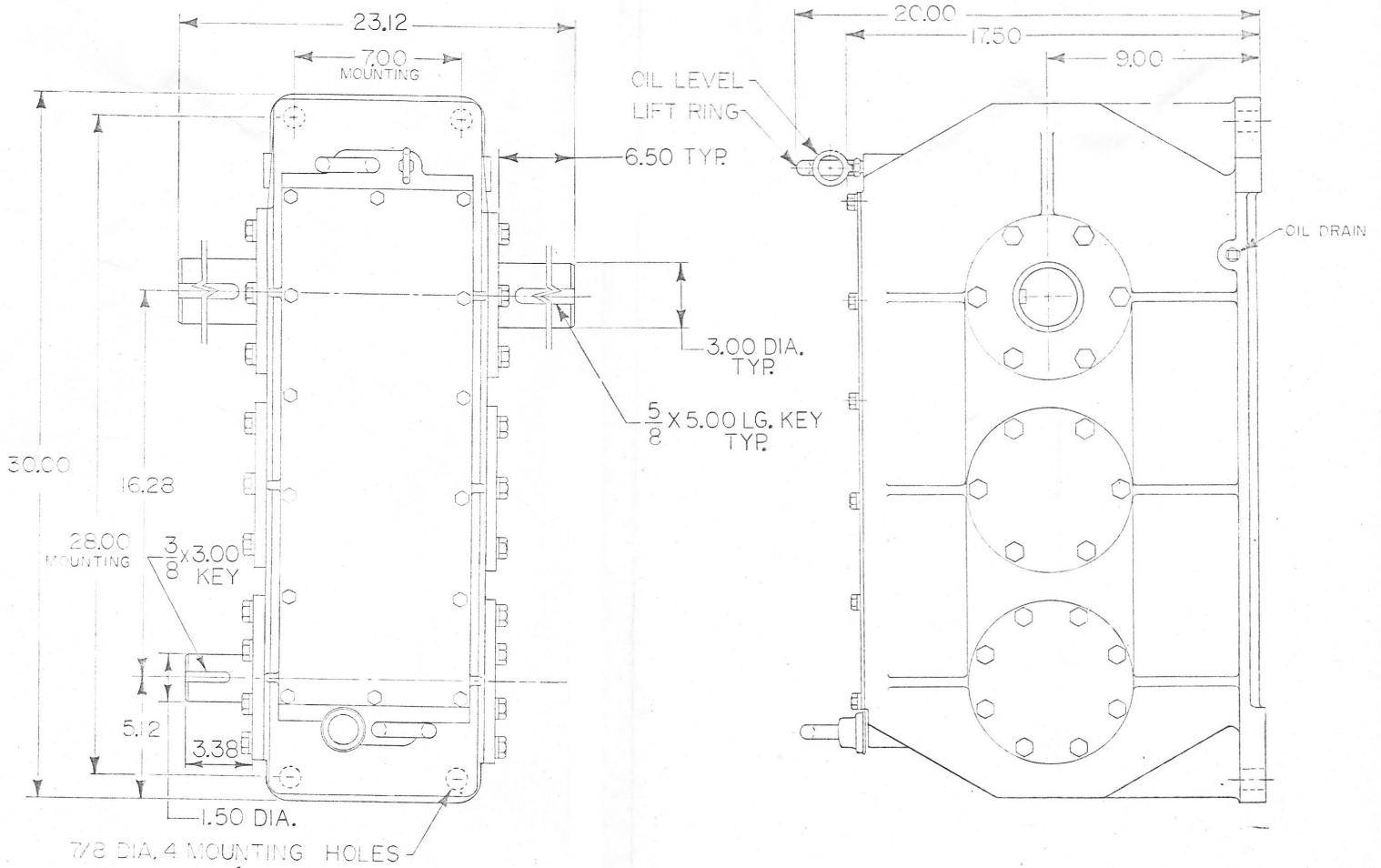
4.00

THE TERRILL MACHINE CO.  
1274 S. 10TH ST.  
MILWAUKEE, WIS. 53204

SEE DGM

SHEET NO. 2 OF 2

PK-K-001



THE TERRELL MACHINE CO.		NO. 27
NAME	SALES	FOR PART NO.
SCALE	BY SA DATE 20/1/1950	
MOLD TO MATCH DIMENSIONS CLOSE AS PRACTICAL AND SURF. FIN.		